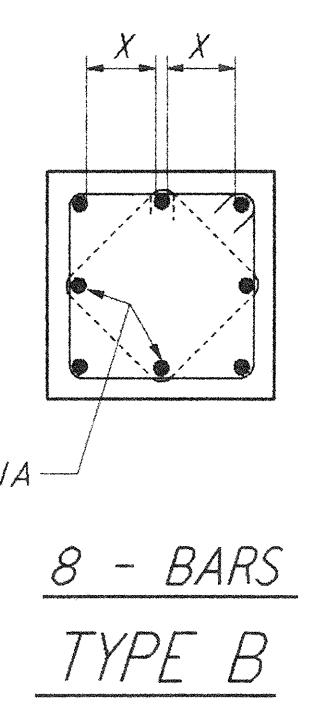
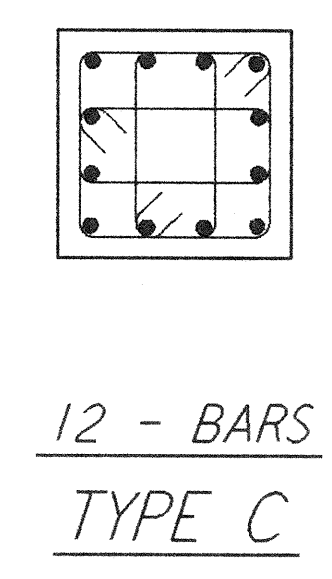


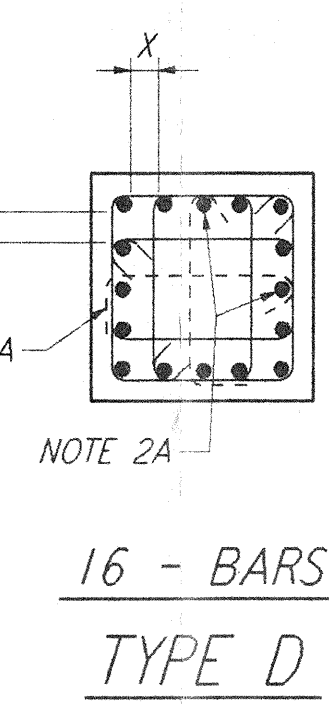
4 - BARS
TYPE A



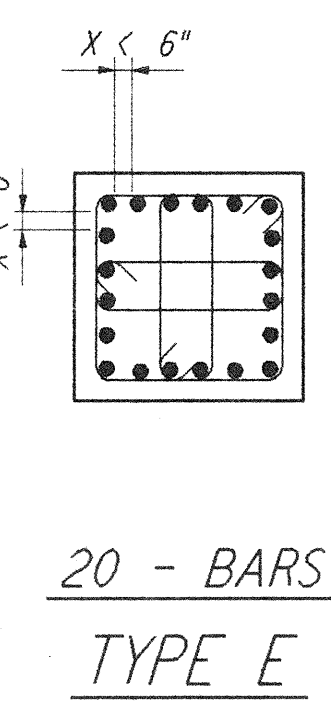
8 - BARS
TYPE B



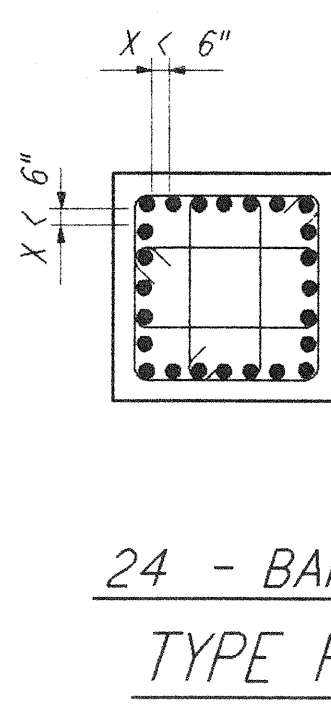
12 - BARS
TYPE C



16 - BARS
TYPE D



20 - BARS
TYPE E

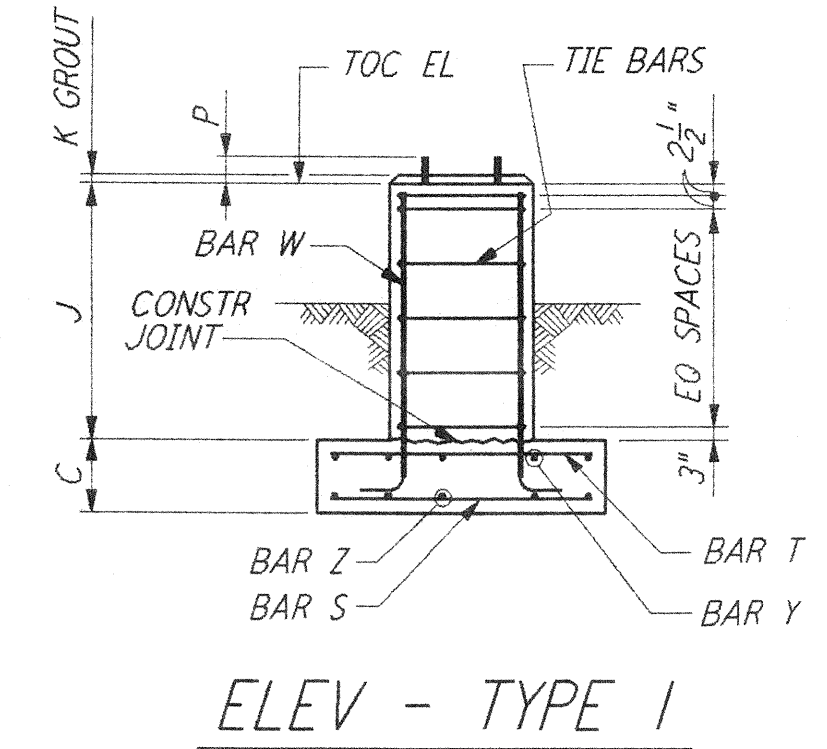


24 - BARS
TYPE F

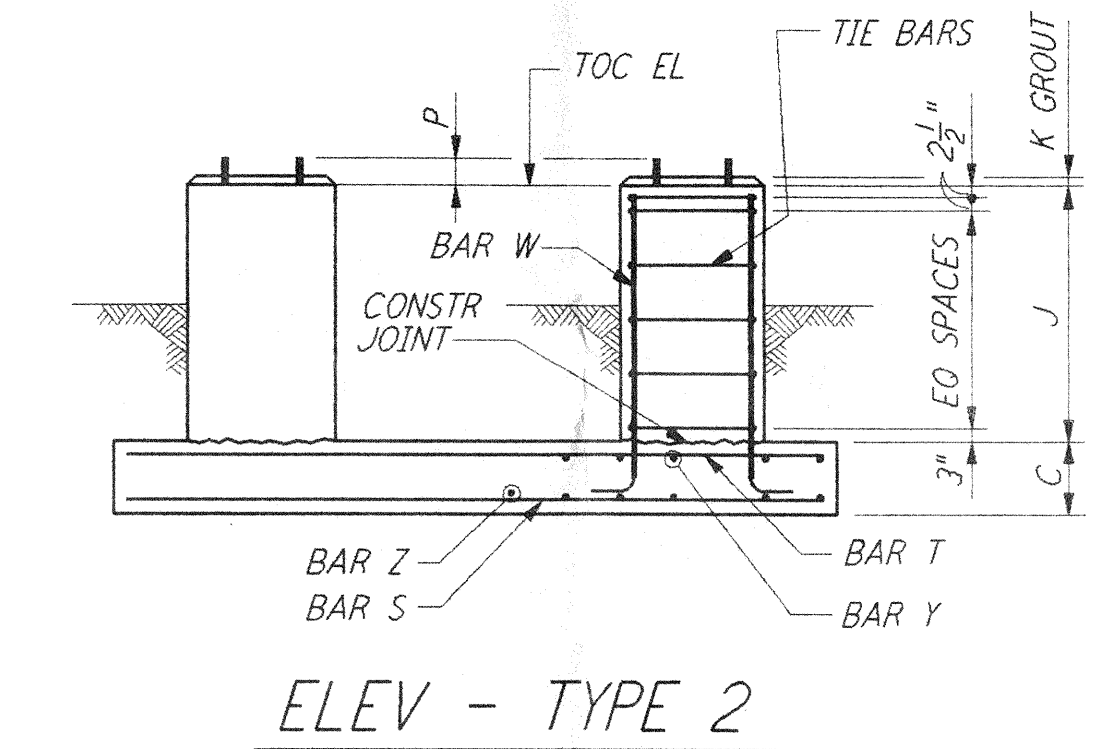
TIE ARRANGEMENT TYPE

TIE REINFORCEMENT NOTES:

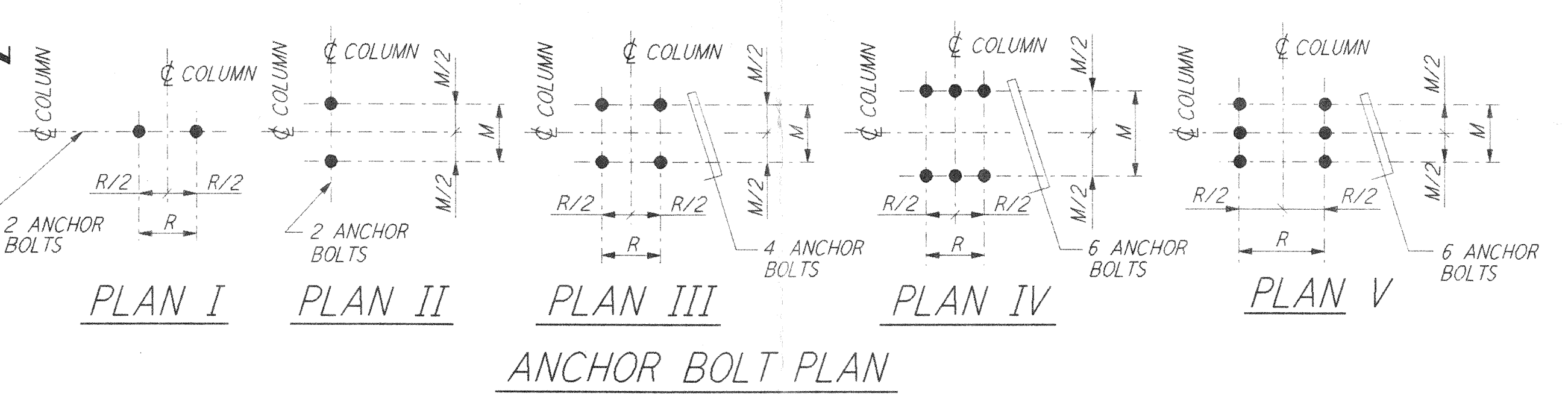
- 1A. THESE BARS MUST BE TIED AS SHOWN BY DASHED LINES WHEN X DISTANCE IS OVER 6 INCHES.
- 2A. THESE BARS NEED NOT BE TIED WHEN X DISTANCE IS 6 INCHES OR LESS.
- 3A. ALTERNATE 90° HOOKS IN COLUMNS.



ELEV - TYPE 1



ELEV - TYPE 2



ANCHOR BOLT PLAN

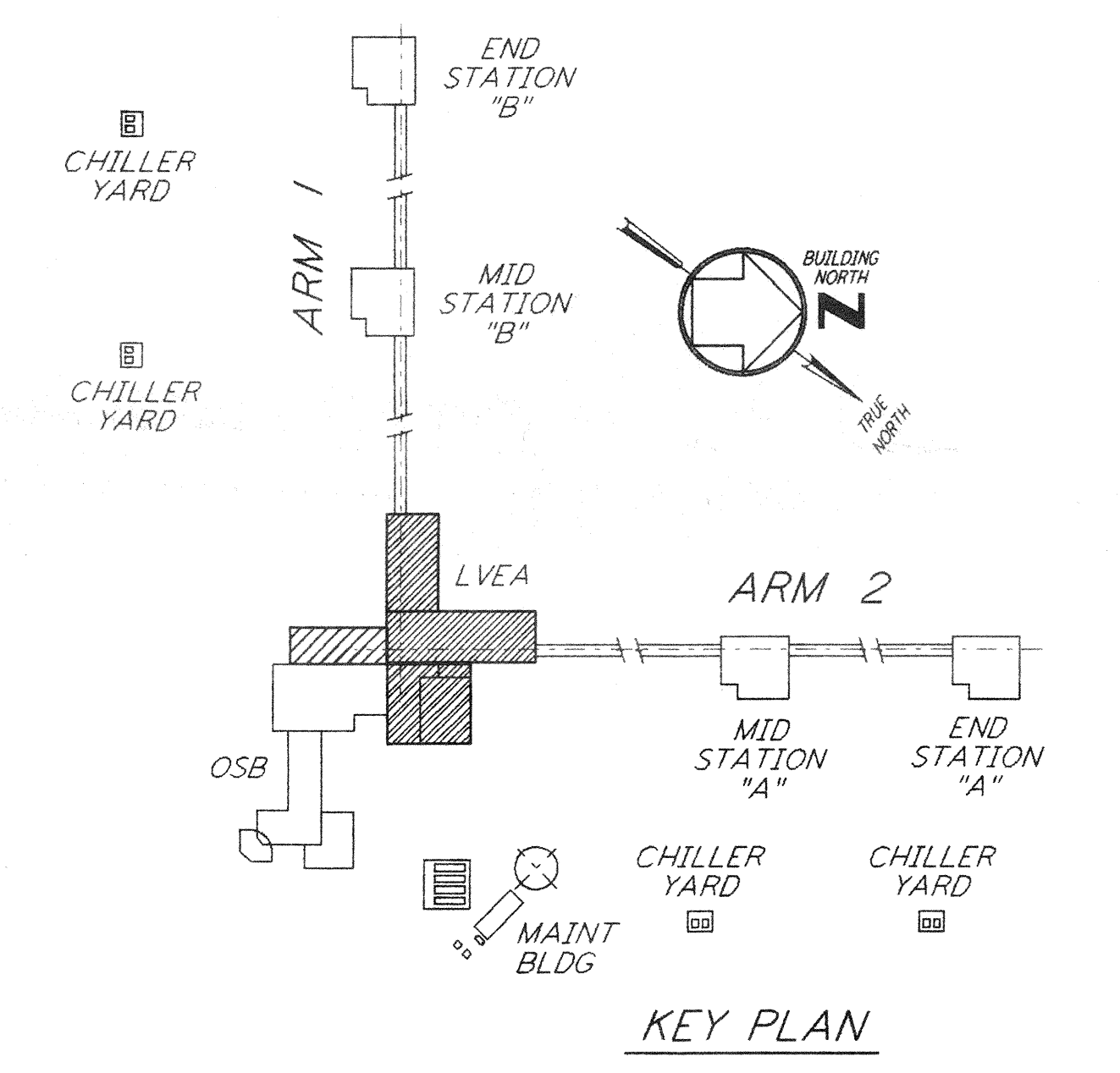
This document and the design it covers are the property of **PARSONS**. They are loaned only with the borrower's expressed written agreement that they will not be reproduced, copied, loaned, exhibited, or used in any other way, except by written consent from **PARSONS** to the borrower.

This document and the design it covers are the property of **PARSONS**. They are loaned only with the borrower's expressed written agreement that they will not be reproduced, copied, loaned, exhibited, or used in any other way, except by written consent from **PARSONS** to the borrower.

NO. OF FDN REQD	FOUNDATION LOCATION (COL. LINES)	TOP OF CONC. EL.	FOUNDATION TYPE PLAN	FOUNDATION TYPE ELEV	DIMENSIONS														ANCHOR BOLTS			REINFORCING PER FOUNDATION										CONC. CY	FDN LOC. PLAN	REMARKS						
					A	B	C	D	F	G	H	J	K	M	R	N	ANCHOR BOLT PLAN	TYPE	NO. PER PIER	SIZE Ø	L	P	BAR S NO. SIZE	BAR Z NO. SIZE	BAR T NO. SIZE	BAR Y NO. SIZE	BAR W NO. SIZE	BAR X NO. SIZE	TIE BAR TYPE	SIZE	NO. RECD.									
1	K-5	100'-0"	A	1	5'-9"	5'-9"	1'-0"	10"	10"	10"	10"	1'-8"	1"	7"	7"	—	III	2	4	1"	1'-4"	4"	7	#5	7	#5	7	#5	7	#5	8	#6	B	#4	4	1.3	WA-S-501			
1	K-4	100'-0"	A	1	5'-9"	5'-9"	1'-0"	10"	10"	1'-4 1/2"	10"	10"	1'-8"	1"	7"	7"	—	III	2	4	1"	1'-4"	4"	7	#5	7	#5	7	#5	7	#5	8	#6	B	#4	4	1.3	WA-S-501		
1	P-6	100'-0"	A	1	5'-9"	5'-9"	1'-0"	10"	10"	1'-4 1/2"	10"	10"	1'-8"	1"	7"	7"	—	III	2	4	1"	1'-4"	4"	7	#5	7	#5	7	#5	7	#5	8	#6	B	#4	4	1.3	WA-S-501		
1	P-7	100'-0"	A	1	5'-9"	5'-9"	1'-0"	10"	10"	1'-4 1/2"	10"	10"	1'-8"	1"	7"	7"	—	III	2	4	1"	1'-4"	4"	7	#5	7	#5	7	#5	7	#5	8	#6	B	#4	4	1.3	WA-S-501		
1	L-4	100'-0"	B	2	8'-0"	28'-0"	2'-0"	1'-0"	1'-4 1/2"	1'-0"	1'-0"	2'-0"	1"	7"	7"	20'-0"	III	2	4	1 1/2"	2'-6"	6"	10	#6	33	#6	10	#6	33	#6	8	#6	B	#4	4	16.8	WA-S-501			
1	M-4	100'-0"						1'-0"	1'-4 1/2"	1'-0"	1'-0"	2'-0"	1"	7"	7"		III	2	4	1 1/2"	2'-6"	6"								8	#6	B	#4	4						
1	N-4	100'-0"						1'-0"	1'-4 1/2"	1'-0"	1'-0"	2'-0"	1"	7"	7"		III	2	4	1 1/2"	2'-6"	6"								8	#6	B	#4	4						
1	P-4	100'-0"						1'-0"	1'-4 1/2"	1'-4 1/2"	1'-0"	2'-0"	1"	7"	7"		III	2	4	1 1/2"	2'-6"	6"								8	#7	B	#4	4		28.7	WA-S-501			
1	P-5	100'-0"						1'-0"	1'-0"	1'-4 1/2"	1'-0"	2'-0"	1"	7"	7"		III	2	4	1 1/2"	2'-6"	6"								8	#6	B	#4	4						
1	A-8, 7, A-9, 7, A-10, B-6, B-10, C-6, C-10, F-3, F-2, G-10, H-13, H-14, H-15, H, 7-1, L, 7-1, J-1, J-2, J-3, J-6, J-14, J-15, K-6, K-10, N-8, P-10																III	2	4	1"	1'-4"	4"																		
1	A-6, A-7, A-8, D-6, D-10, E-6, E-10, F-1, F-4, F-5, F-6, F-10, G-1, H-1, H-10, H-11, H-12, H-16, I-16, J-4, J-5, J-10, J-11, J-12, J-13, J-16, K-7, K-8, L-8, L-10, M-8, M-10, N-10, P-8, P-9,													1"	7"	7"		III	2	4	1 1/2"	2'-6"	6"																	

NOTES:

- 1. CONSTRUCTION SHALL COMPLY WITH ALL THE REQUIREMENTS OF THE GENERAL NOTES ON DRAWING WA-S-001.
- 2. THE BAR SPACING IS BASED ON CENTER TO CENTER OF TIE SET.
- 3. FOR ANCHOR BOLT DETAILS SEE DETAIL **W-S-003**



ISSUED FOR CONSTRUCTION
 DRAWN MCS 6-24-96
 CHECKED 08/21 7-2-96
 ENGINEER 1/8/8 6-28-96
 PROJ 7/19/96

100 WEST WALNUT STREET
 PASADENA, CALIFORNIA

CALIFORNIA INSTITUTE OF TECHNOLOGY
 MASSACHUSETTS INSTITUTE OF TECHNOLOGY

LASER INTERFEROMETER
 GRAVITATIONAL-WAVE OBSERVATORY
 SITE NO. 1 - HANFORD, WASHINGTON

TITLE	STRUCTURAL CORNER STATION LVEA FOUNDATION SCHEDULE	SCALE	NONE	CONTRACT NUMBER	PP150969	PROJECT NUMBER	8094
SHEET NUMBER						WA-S-519	

PROJECT NUMBER: LIGO-D960340-00-0