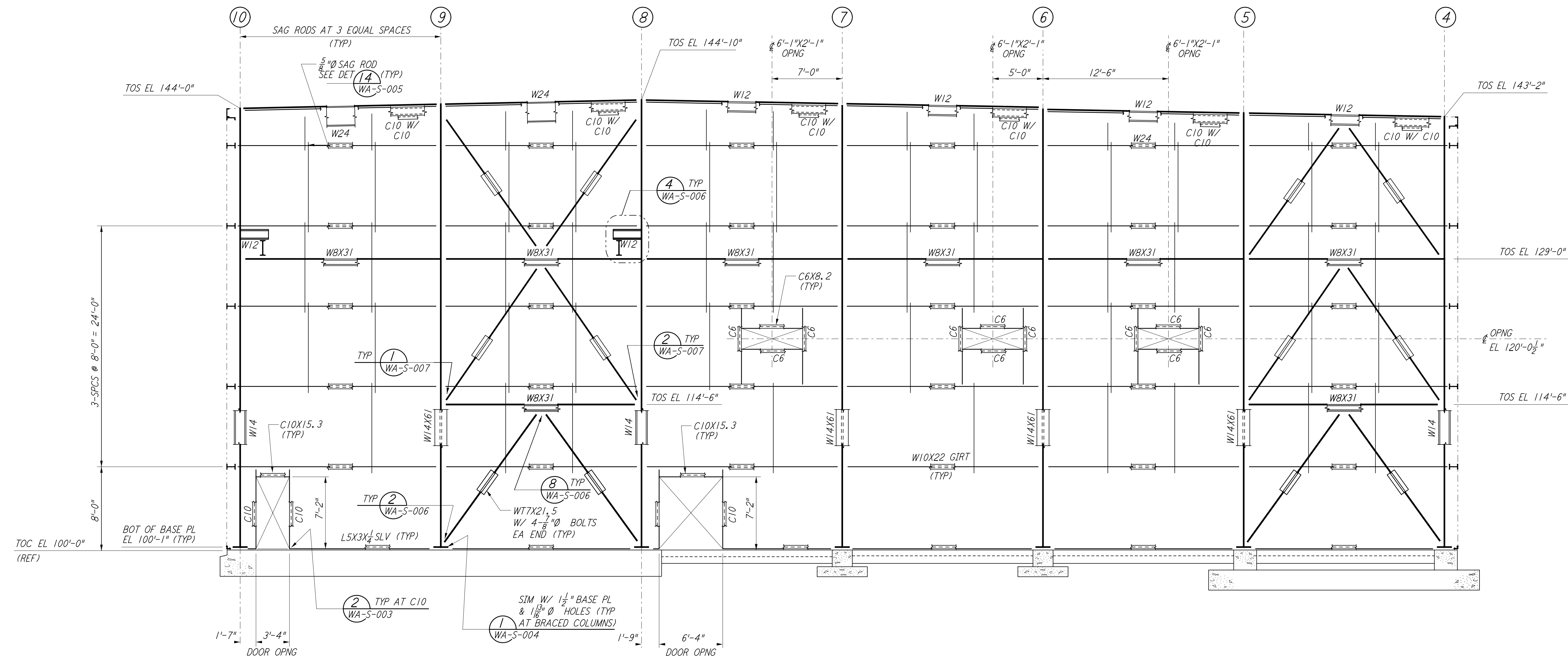
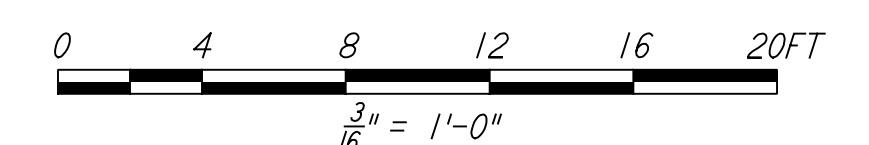


This document and the design it covers are the property of PARSONS. They are loaned only with the borrower's expressed written agreement that they will not be reproduced, copied, loaned, exhibited, or used in any other way, except by written consent from PARSONS to the borrower.



ELEVATION AT COLUMN LINE P
 $\frac{3}{16}'' = 1'-0''$

NOTE:
 1. FOR NOTES SEE DRAWING WA-S-507.



LIGO-D960337-01-O

| NO. | DATE | BY | CHKD | ENGR | PROJ | DESCRIPTION |
|-----|---------|-----|------|------|------|---------------------|
| 1 | 6-15-98 | CKT | | | | ISSUED FOR AS-BUILT |

| | | |
|--------------------------|-----|---------|
| ISSUED FOR CONSTRUCTION | | |
| DRAWN | MCS | 6-24-96 |
| CHECKED | DDM | 7-2-96 |
| ENGINEER | BP | 6-28-96 |
| PROJ | MDW | 7-9-96 |
| AS-BUILT DRAWINGS | | |



| | | |
|--|----------|----------------|
| LASER INTERFEROMETER GRAVITATIONAL-WAVE OBSERVATORY SITE NO. 1 - HANFORD, WASHINGTON | | |
| TITLE | AS NOTED | PROJECT NUMBER |
| STRUCTURAL CORNER STATION LVEA FRAMING ELEVATIONS SHEET 10 | PP150969 | 8094 |
| SHEET NUMBER | | REVISIONS |
| WA-S-516 | | |

This drawing was prepared by the staff of PARSONS under the supervision of the staff of PARSONS. It is the property of PARSONS and is loaned to you for your use only. It is not to be reproduced, copied, loaned, exhibited, or used in any other way, except by written consent from PARSONS to the borrower.