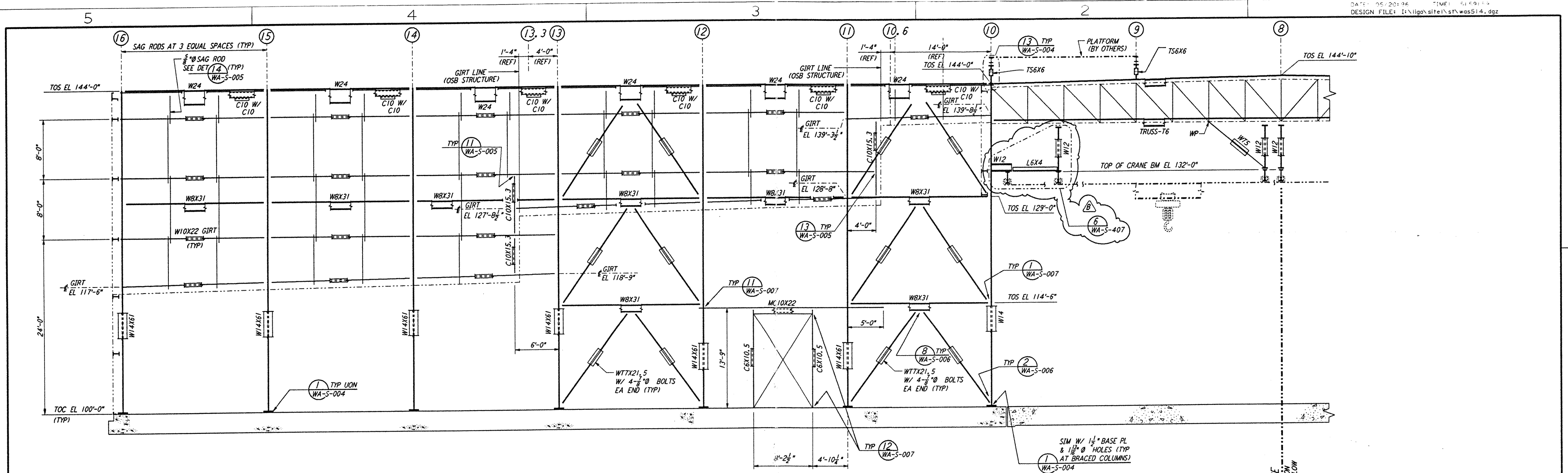
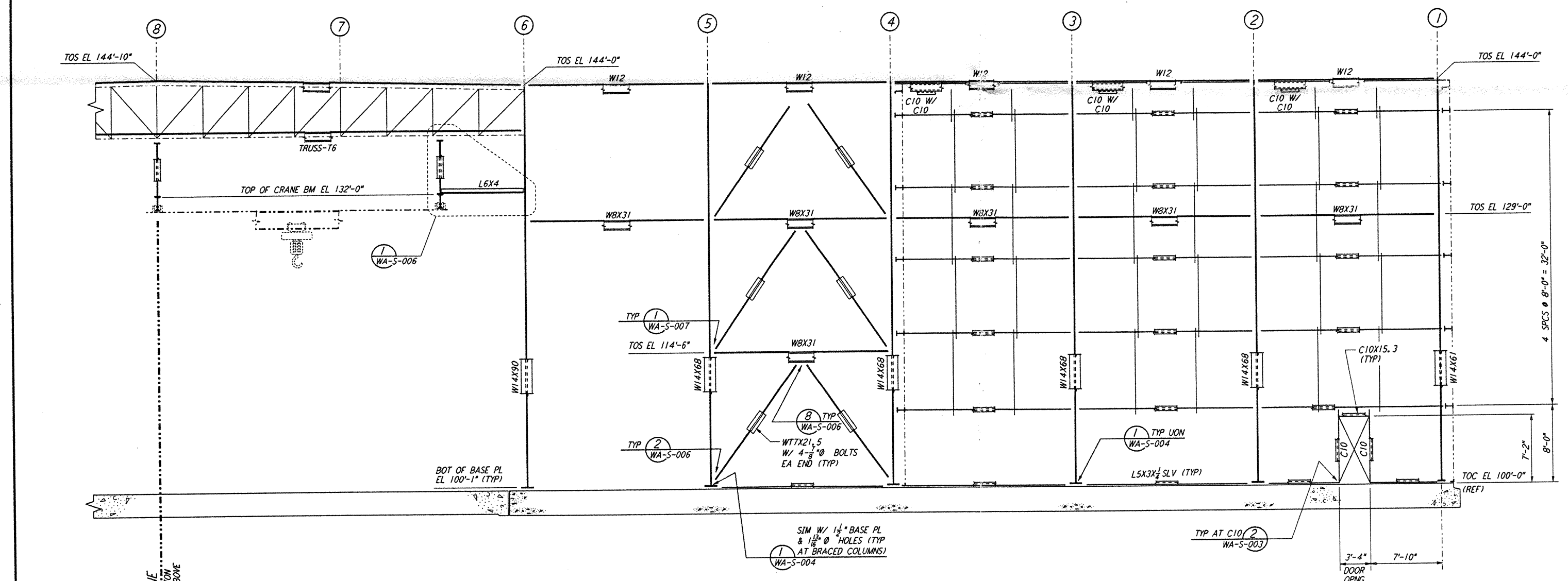


not be reproduced, copied, loaned, exhibited, or used in any other way, except by written consent from PARSONS to the borrower.

This document and the design it covers are the property of PARSONS. They are loaned only with the borrower's expressed written agreement that they will



PARTIAL ELEVATION AT COLUMN LINE J
 $\frac{1}{8}'' = 1'-0''$

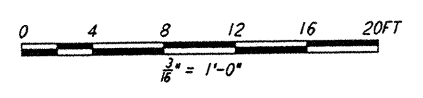


PARTIAL ELEVATION AT COLUMN LINE J
 $\frac{1}{8}'' = 1'-0''$

MATCH LINE FOR CONTINUATION SEE ELEVATION BELOW

MATCH LINE FOR CONTINUATION SEE ELEVATION ABOVE

NOTE:
 1. FOR NOTES SEE DRAWING WA-S-507.



LIGO-D960335-B-0

NO.	DATE	BY	CHKD	ENGR	PROJ	DESCRIPTION
B	5-22-96	MCS	DDM	BP	TDW	BID ADDENDUM #2
A	4-19-96	MCS	DDM	BP	TDW	FINAL DESIGN REVIEW & BID

DRAWN	MCS
CHECKED	
ENGINEER	
PROJ	

PARSONS
 100 WEST WALNUT STREET
 PASADENA, CALIFORNIA

LIGO
 CALIFORNIA INSTITUTE OF TECHNOLOGY
 MASSACHUSETTS INSTITUTE OF TECHNOLOGY

LASER INTERFEROMETER
 GRAVITATIONAL-WAVE OBSERVATORY
 SITE NO. 1 - HANFORD, WASHINGTON

TITLE	SCALE	CONTRACT NUMBER	PROJECT NUMBER
STRUCTURAL CORNER STATION LVEA FRAMING ELEVATIONS SHEET 8	AS NOTED	PPI 150969	8094
SHEET NUMBER		REVISIONS	
WA-S-514		B	