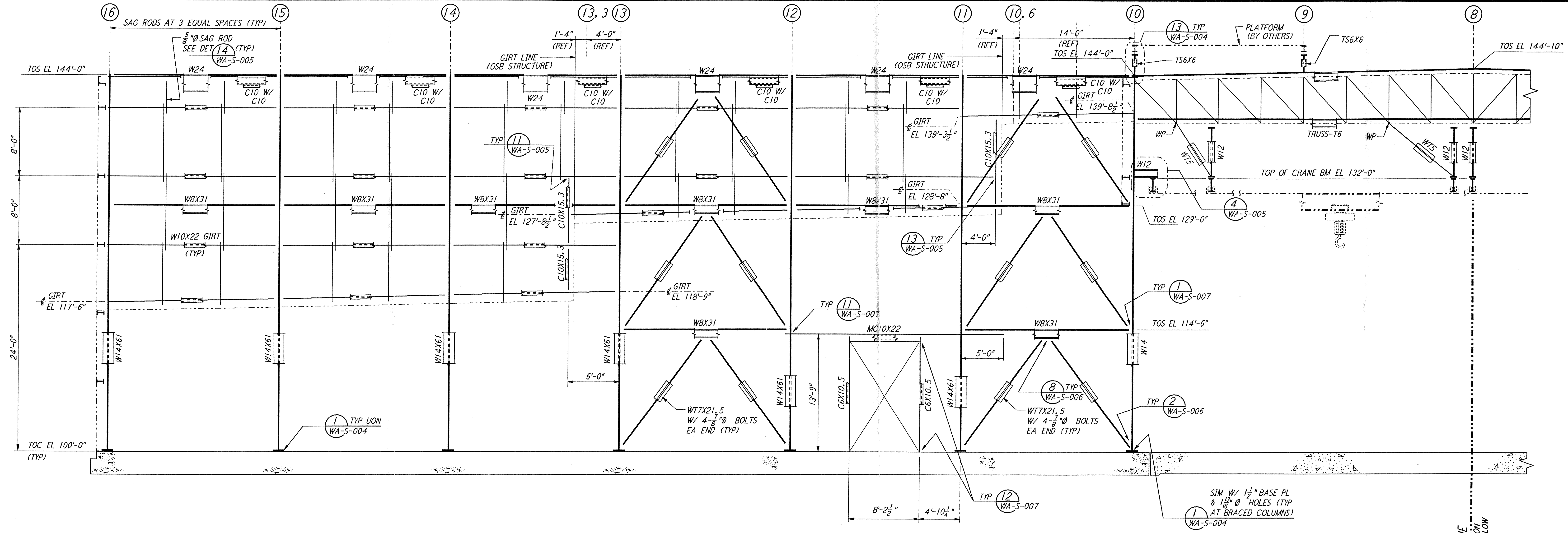
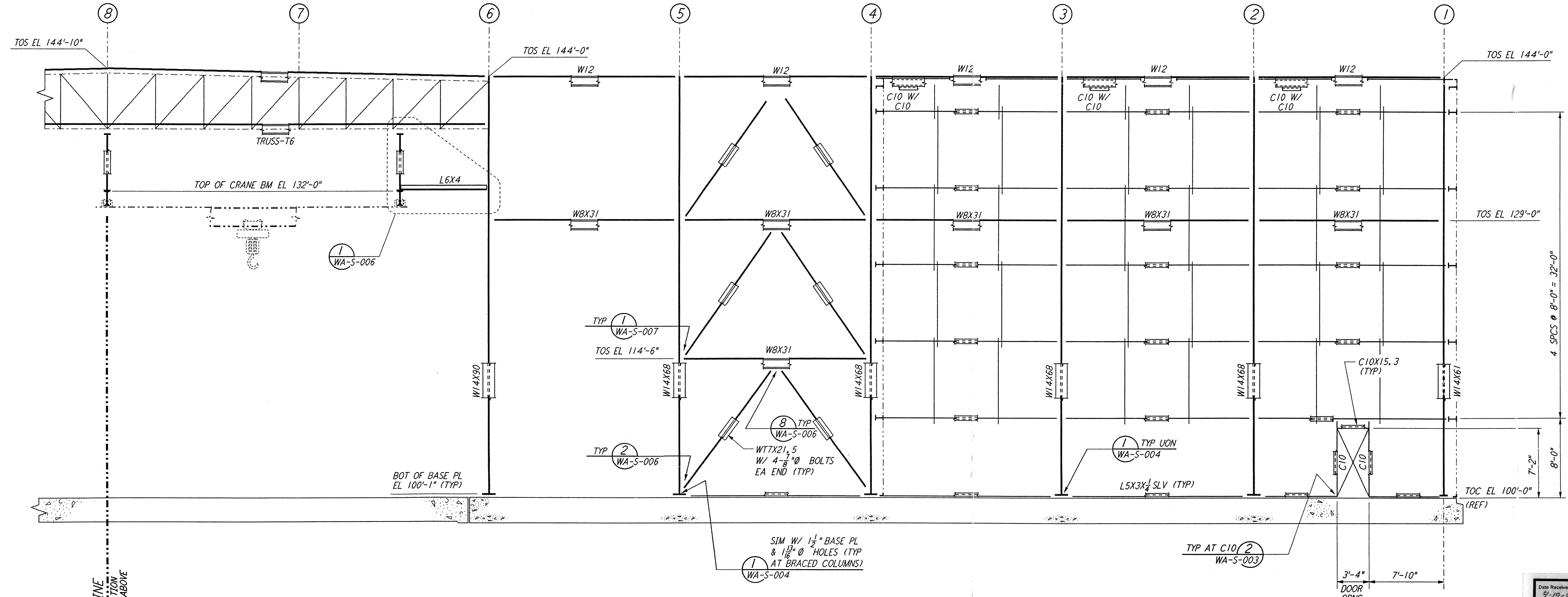


not be reproduced, copied, loaned, exhibited, or used in any other way, except by written consent from PARSONS to the borrower.

This document and the design it covers are the property of PARSONS. They are loaned only with the borrower's expressed written agreement that they will



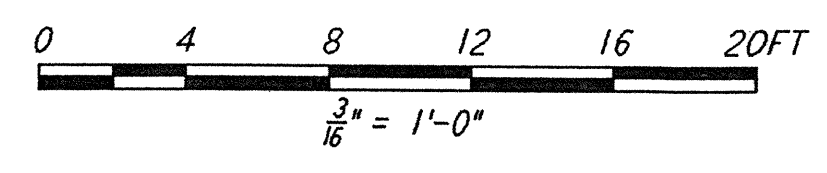
PARTIAL ELEVATION AT COLUMN LINE J
 $\frac{3}{8}'' = 1'-0''$



PARTIAL ELEVATION AT COLUMN LINE J
 $\frac{3}{8}'' = 1'-0''$

NOTE:
 1. FOR NOTES SEE DRAWING WA-S-507.

Date Received	4-19-96	LIGO-D960335-A-D
Contractor	WA-S-514, REV A	
Task #	30	LIGO-0960335-00V
Date	4/19/96	Approved:
TDM #		LIGO:
Date		Approved:
Gen'l Transmittal		LIGO:
Date		Approved:



NO.	DATE	BY	CHKD	ENGR	PROJ	DESCRIPTION
A	4-19-96	MCS	DDM	PK	DDM	FINAL DESIGN REVIEW & BID

DRAWN	MCS
CHECKED	
ENGINEER	
PROJ	

PARSONS
 100 WEST WALNUT STREET
 PASADENA, CALIFORNIA

LIGO
 CALIFORNIA INSTITUTE OF TECHNOLOGY
 MASSACHUSETTS INSTITUTE OF TECHNOLOGY

LASER INTERFEROMETER
 GRAVITATIONAL-WAVE OBSERVATORY
 SITE NO. 1 - HANFORD, WASHINGTON

TITLE: STRUCTURAL CORNER STATION LVEA FRAMING ELEVATIONS SHEET 8

SCALE: AS NOTED

CONTRACT NUMBER: PP150969

PROJECT NUMBER: 8094

SHEET NUMBER: WA-S-514

REVISIONS: A