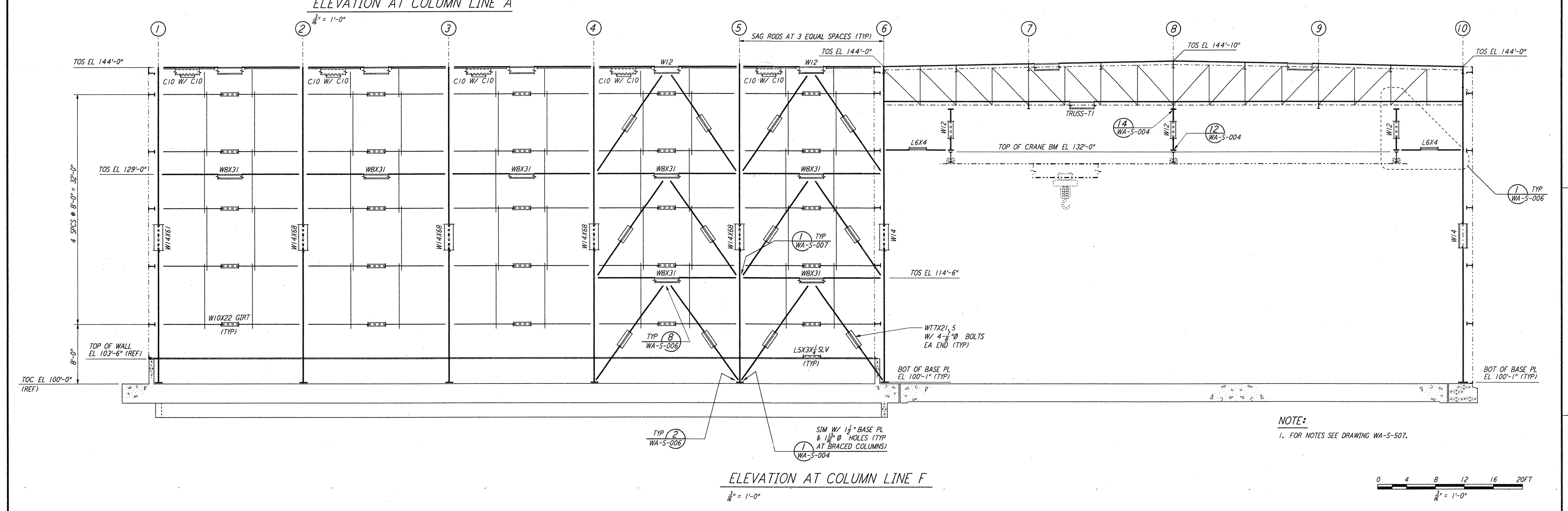
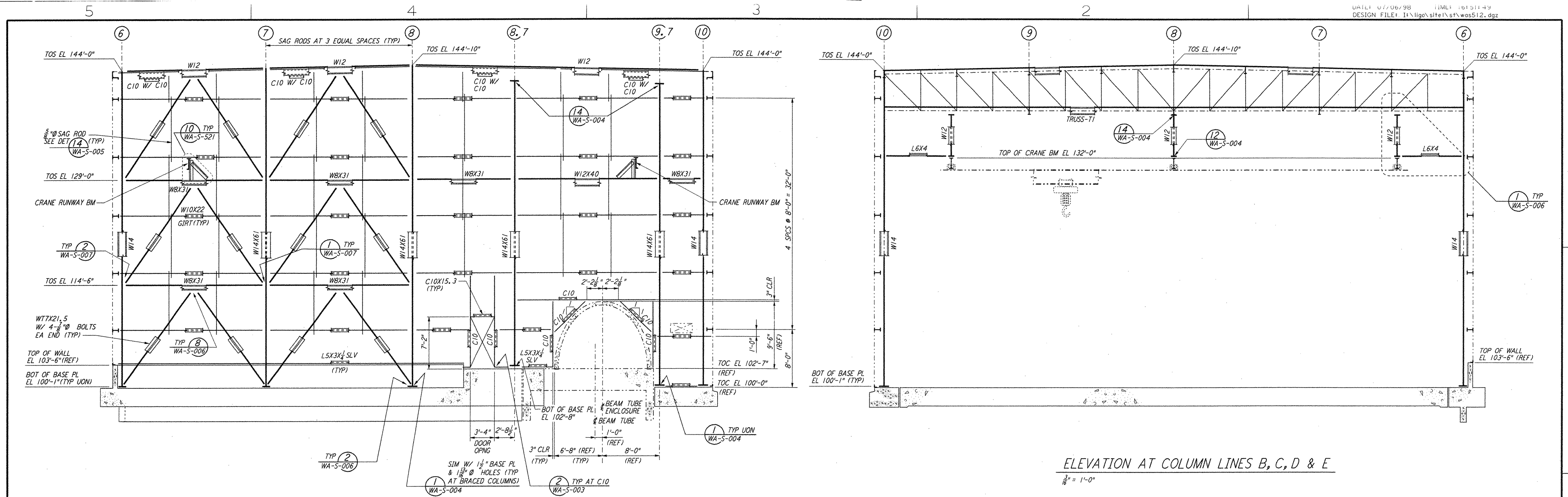
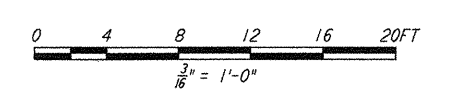


This document and the design it covers are the property of PARSONS. They are loaned only with the borrower's expressed written agreement that they will not be reproduced, copied, loaned, exhibited, or used in any other way, except by written consent from PARSONS to the borrower.



NOTE:
 1. FOR NOTES SEE DRAWING WA-S-507.



LIGO-D960333-01-O									
LASER INTERFEROMETER GRAVITATIONAL-WAVE OBSERVATORY SITE NO. 1 - HANFORD, WASHINGTON									
DRAWING NO.		DESCRIPTION		NO.		DATE		BY	
				1		6-15-98		CKT	
				2				BY	
				3				ENGR	
				4				ENGR	
				5				ENGR	
ISSUED FOR CONSTRUCTION DRAWN MCS 6-24-96 CHECKED DDM 7-2-96 ENGINEER BP 6-28-96 PROJ MDW 7-9-96									
AS-BUILT DRAWINGS									
100 WEST WALNUT STREET PASADENA, CALIFORNIA									
PARSONS									
LIGO									
CALIFORNIA INSTITUTE OF TECHNOLOGY MASSACHUSETTS INSTITUTE OF TECHNOLOGY									
STRUCTURAL CORNER STATION LVEA FRAMING ELEVATIONS SHEET 6				AS NOTED CONTRACT NUMBER PPI 50969		PROJECT NUMBER 8094		REVISIONS WA-S-512	

Not. Jul. 86 16:51:24 1998 C:\PLOT\006\533-V2662.DWG 52885 K:\V3662\4512.plt LIGOWAF.BDR