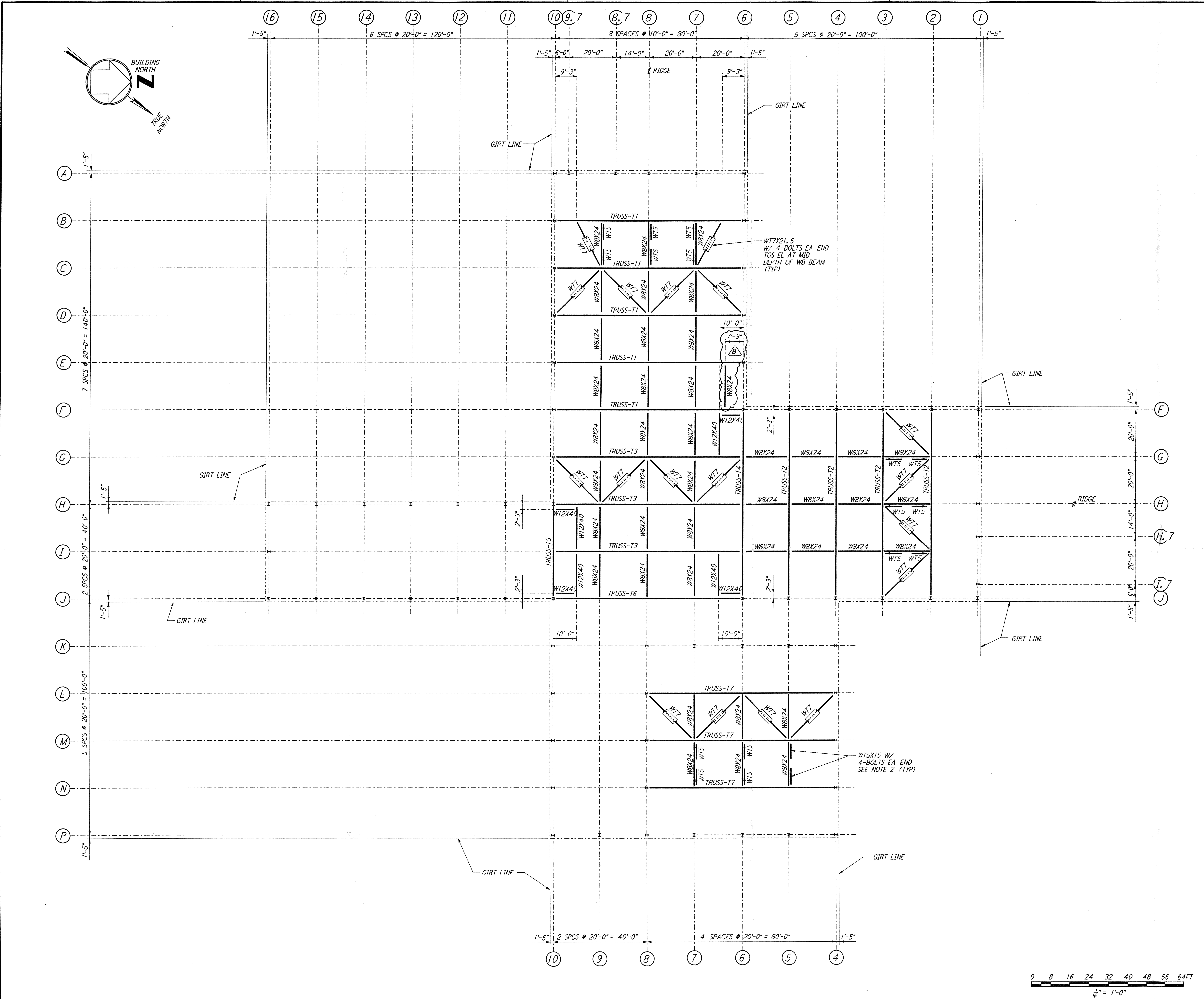
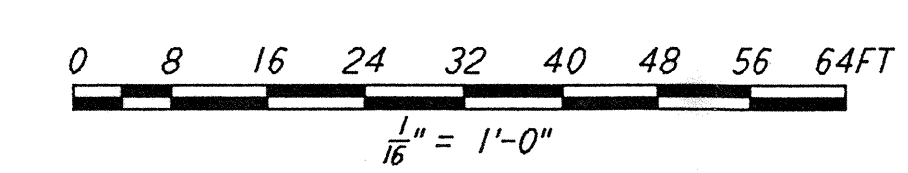
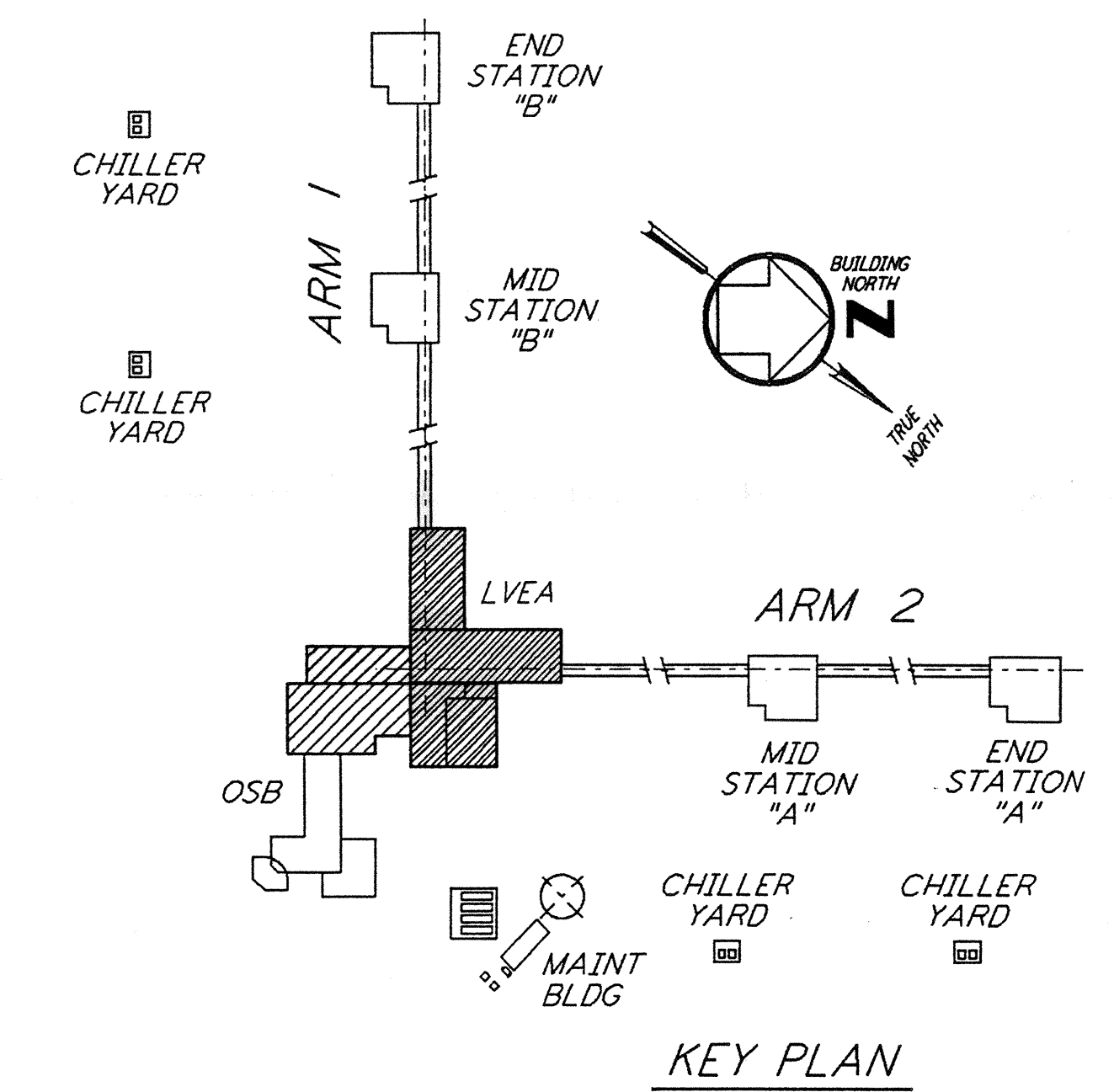


This document and the design it covers are the property of **PARSONS**. They are loaned only with the borrower's expressed written agreement that they will not be reproduced, copied, loaned, exhibited, or used in any other way, except by written consent from **PARSONS** to the borrower.



- NOTES:**
- FOR NOTES SEE DRAWING WA-S-504.
 - DENOTES WTS VERTICAL BRACE AND POINTS TO LOW END. FOR CONNECTION SEE DETAIL (B) SIM WA-S-006



NO.	DATE	BY	CHKD	ENGR	PROJ	DESCRIPTION
B	5-22-96	MCS	DM	PA	TDM	BID ADDENDUM #2
A	4-19-96	MCS	DM	BP	TDM	FINAL DESIGN REVIEW & BID

DRAWN	MCS
CHECKED	
ENGINEER	
PROJ	

PARSONS

100 WEST WALNUT STREET
PASADENA, CALIFORNIA

LIGO

CALIFORNIA INSTITUTE OF TECHNOLOGY
MASSACHUSETTS INSTITUTE OF TECHNOLOGY

LASER INTERFEROMETER
GRAVITATIONAL-WAVE OBSERVATORY
SITE NO. 1 - HANFORD, WASHINGTON

TITLE	SCALE	CONTRACT NUMBER	PROJECT NUMBER
STRUCTURAL CORNER STATION LVEA - TRUSS BOTTOM CHORD FRMG PLAN	AS NOTED	PP150969	8094
SHEET NUMBER	REVISIONS		
WA-S-505	B		

LIGO-D960326-B-0