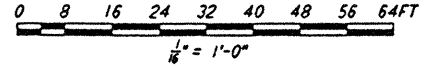
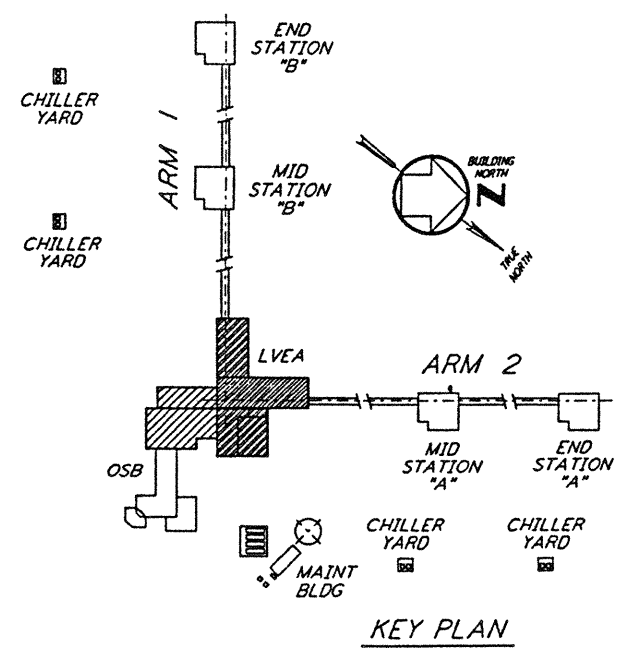


- NOTES:**
- FOR NOTES SEE DRAWING WA-S-504.
  - DENOTES WTS VERTICAL BRACE AND POINTS TO LOW END. FOR CONNECTION SEE DETAIL 5 SIM WA-S-006



This document and the design it covers are the property of PARSONS. They are loaned only with the borrower's expressed written agreement that they will not be reproduced, copied, loaned, exhibited, or used in any other way, except by written consent from PARSONS to the borrower.

NO.	DATE	BY	CHKD	ENGR	PROJ	DESCRIPTION
A	4-19-96	MCS	sdm	AK	2/2/97	FINAL DESIGN REVIEW & BID

DRAWN	MCS
CHECKED	
ENGINEER	
PROJ	

**PARSONS**  
 100 WEST WALNUT STREET  
 PASADENA, CALIFORNIA

**LIGO**  
 CALIFORNIA INSTITUTE OF TECHNOLOGY  
 MASSACHUSETTS INSTITUTE OF TECHNOLOGY

LASER INTERFEROMETER  
 GRAVITATIONAL-WAVE OBSERVATORY  
 SITE NO. 1 - HANFORD, WASHINGTON

TITLE: STRUCTURAL CORNER STATION LVEA - TRUSS BOTTOM CHORD FRMG PLAN

SCALE: AS NOTED CONTRACT NUMBER: PP150969 PROJECT NUMBER: 8094

SHEET NUMBER: **WA-S-505**