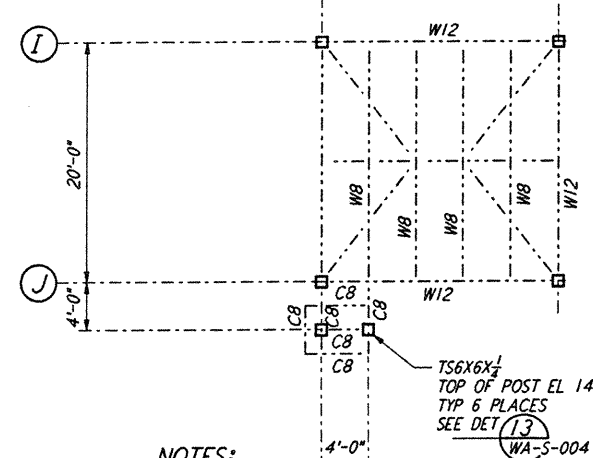
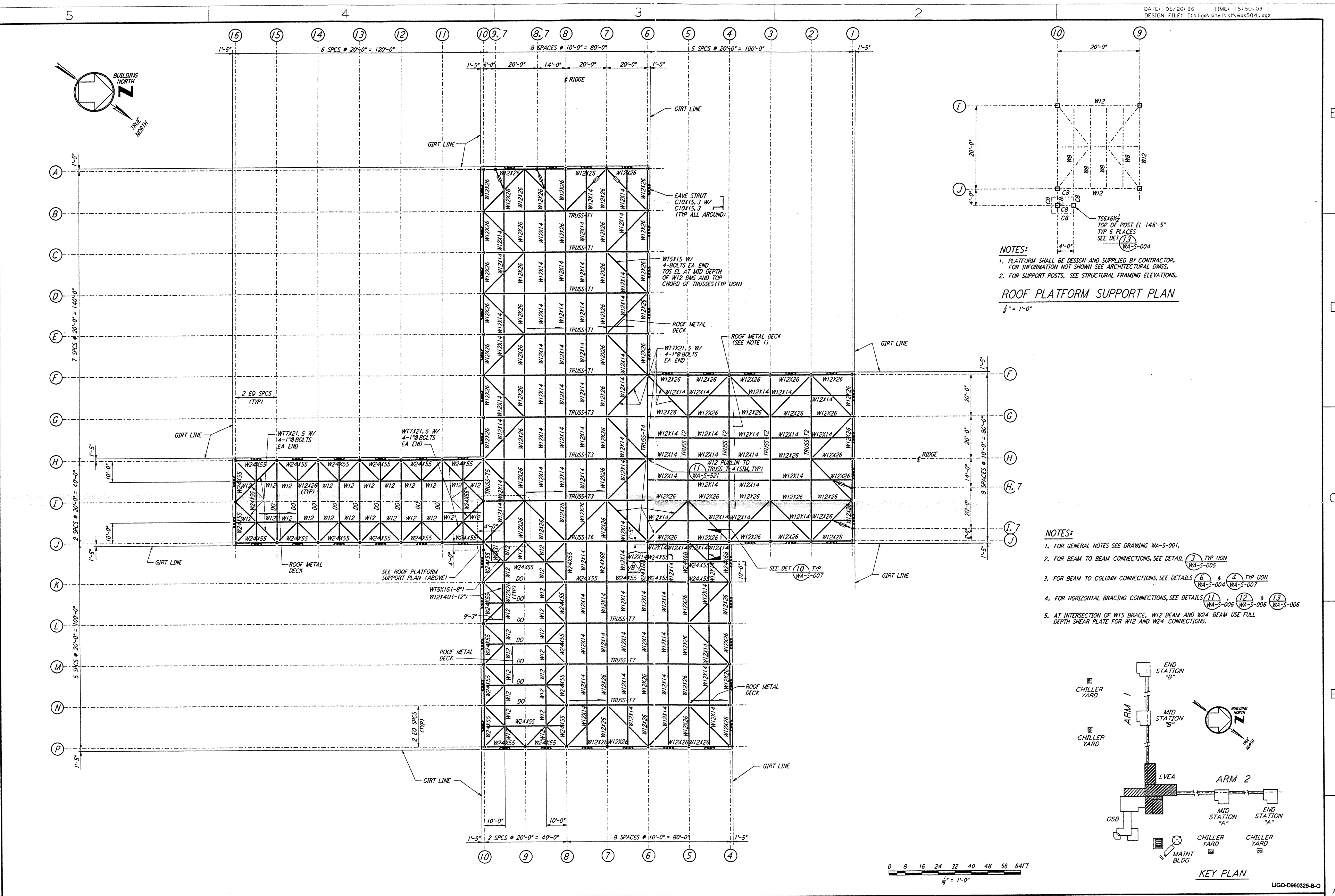
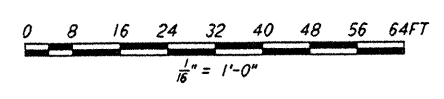
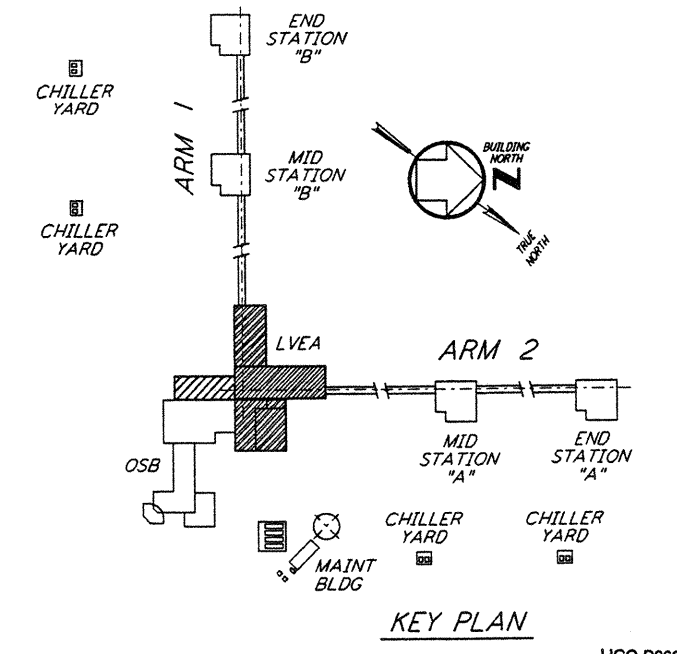


This document and the design it covers are the property of PARSONS. They are loaned only with the borrower's expressed written agreement that they will not be reproduced, copied, loaned, exhibited, or used in any other way, except by written consent from PARSONS to the borrower.



**NOTES:**  
 1. PLATFORM SHALL BE DESIGN AND SUPPLIED BY CONTRACTOR. FOR INFORMATION NOT SHOWN SEE ARCHITECTURAL DWGS.  
 2. FOR SUPPORT POSTS, SEE STRUCTURAL FRAMING ELEVATIONS.  
**ROOF PLATFORM SUPPORT PLAN**  
 $\frac{1}{8}'' = 1'-0''$

**NOTES:**  
 1. FOR GENERAL NOTES SEE DRAWING WA-S-001.  
 2. FOR BEAM TO BEAM CONNECTIONS, SEE DETAIL (3) TYP UON WA-S-005  
 3. FOR BEAM TO COLUMN CONNECTIONS, SEE DETAILS (6) & (4) TYP UON WA-S-006 & WA-S-007  
 4. FOR HORIZONTAL BRACING CONNECTIONS, SEE DETAILS (11), (12) & (13) TYP WA-S-006 & WA-S-006  
 5. AT INTERSECTION OF WTS BRACE, W12 BEAM AND W24 BEAM USE FULL DEPTH SHEAR PLATE FOR W12 AND W24 CONNECTIONS.



NO.	DATE	BY	CHKD	ENGR	PROJ	DESCRIPTION
B	5-22-96	MCS	PH	PH		BID ADDENDUM #2
A	4-19-96	MCS	DOM	BP	TOM	FINAL DESIGN REVIEW & BID

DRAWN	MCS
CHECKED	
ENGINEER	
PROJ	

**PARSONS**  
 100 WEST WALNUT STREET  
 PASADENA, CALIFORNIA

**LIGO**  
 CALIFORNIA INSTITUTE OF TECHNOLOGY  
 MASSACHUSETTS INSTITUTE OF TECHNOLOGY

LASER INTERFEROMETER  
 GRAVITATIONAL-WAVE OBSERVATORY  
 SITE NO. 1 - HANFORD, WASHINGTON  
**STRUCTURAL CORNER STATION LVEA ROOF FRAMING PLAN**  
 AS NOTED PPI 50969 8094  
**WA-S-504**

LIGO-D960325-B-0

LIGOWAF.BDR