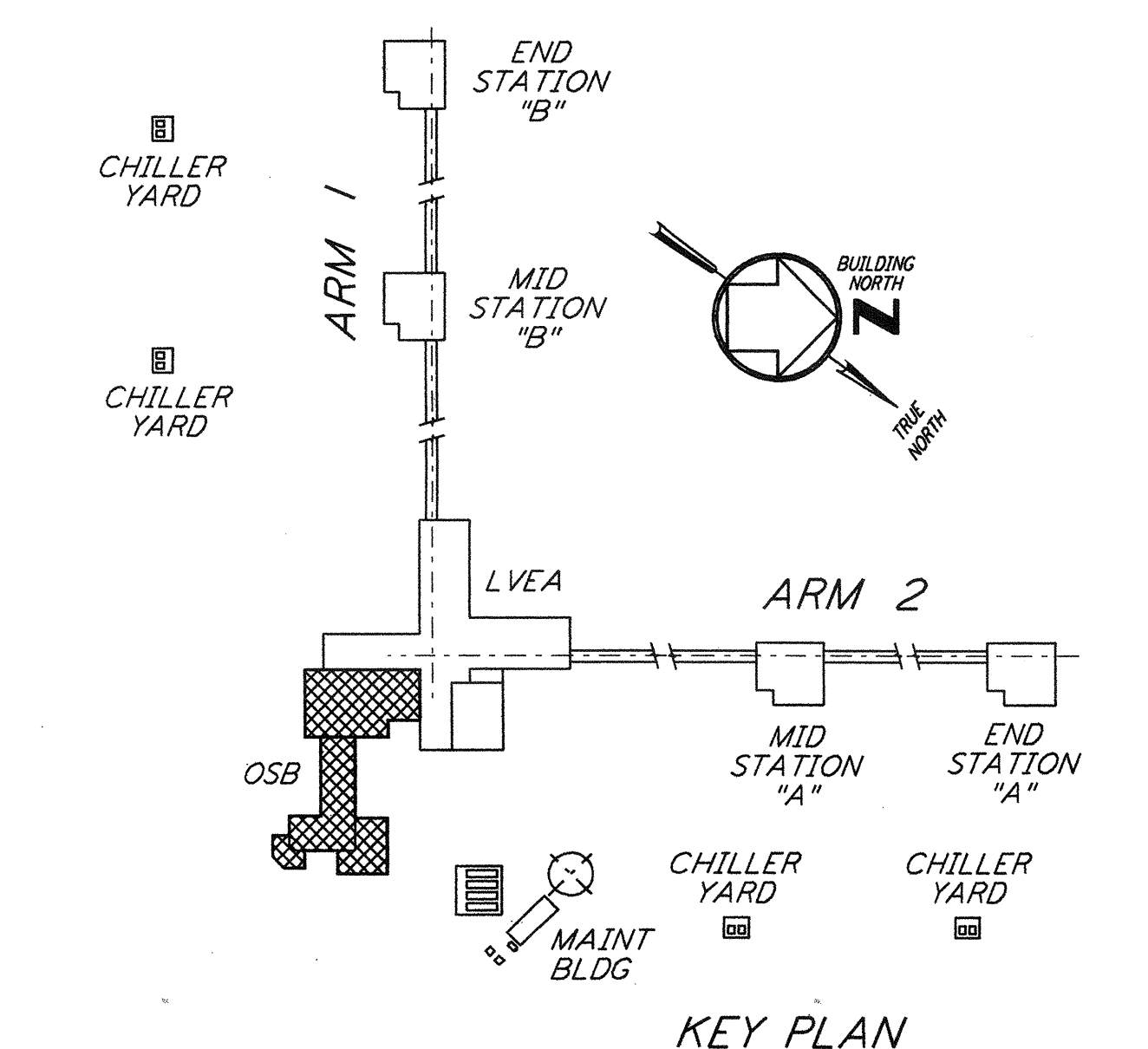


- NOTES:**
- CONSTRUCTION SHALL COMPLY WITH ALL THE REQUIREMENTS OF THE GENERAL NOTES ON DRAWING WA-S-001.
  - THE BAR SPACING IS BASED ON CENTER TO CENTER OF THE SET.
  - FOR ANCHOR BOLT DETAILS SEE DRAWING WA-S-003.

NO. OF FDN'S REQ'D	FOUNDATION LOCATION (COL LINES)	TOP OF CONC EL	FOUNDATION TYPE	DIMENSIONS													ANCHOR BOLTS PER PIER					REINFORCING PER FOUNDATION						CONC CY	FDN LOC PLAN	REMARKS											
				PLAN	ELEV	A	B	C	D	F	G	H	J	K	M	R	N	ANCHOR BOLT PLAN	TYPE	NO PER PIER	SIZE	L	P	BAR S		BAR Z					BAR T		BAR Y		BAR W		TIE BAR				
																								NO	SIZE	NO	SIZE				NO	SIZE	NO	SIZE	NO	SIZE	NO	SIZE	NO	SIZE	NO
1	V-18	100'-0"	B	2	4'-0"	9'-0"	1'-6"	10"	10"	10"	10"	1'-2"	1"	7"	7"	5'-0"	III	2	4	1"	1'-4"	4"	5	#6	10	#6	5	#6	10	#6	8	#6	B	#4	3	2.3	WA-S-102				
	V.2-18	100'-0"						10"	10"	10"	10"	1'-2"	1"	7"	7"								8	#6	B	#4	3														
1	W-17.2	100'-0"	B	2	4'-0"	9'-0"	1'-6"	10"	10"	10"	10"	1'-2"	1"	7"	7"	5'-0"	III	2	4	1"	1'-4"	4"	5	#6	10	#6	5	#6	10	#6	8	#6	B	#4	3	2.3	WA-S-102				
	W-17	100'-0"						10"	10"	10"	10"	1'-2"	1"	7"	7"								8	#6	B	#4	3														
1	T-16.3	100'-0"	B	2	4'-0"	24'-0"	1'-6"	10"	10"	10"	10"	1'-2"	1"	7"	7"	20'-0"	III	2	4	1"	1'-4"	4"	5	#6	25	#6	5	#6	25	#6	8	#6	B	#4	3	6.0	WA-S-102				
	U-16.3	100'-0"						10"	10"	10"	10"	1'-2"	1"	7"	7"								8	#6	B	#4	3														
1	W-15.3	100'-0"	B	2	4'-0"	24'-0"	1'-6"	10"	10"	10"	10"	1'-2"	1"	7"	7"	20'-0"	III	2	4	1"	1'-4"	4"	5	#6	25	#6	5	#6	25	#6	8	#6	B	#4	3	6.0	WA-S-102				
	W-14.3	100'-0"						10"	10"	10"	10"	1'-2"	1"	7"	7"								8	#6	B	#4	3														
1	U-18	100'-0"	B	2	6'-0"	24'-0"	1'-6"	10"	10"	10"	10"	1'-6"	1"	7"	7"	20'-0"	III	2	4	1"	1'-4"	4"	7	#6	25	#6	7	#6	25	#6	8	#6	B	#4	3	9.0	WA-S-102				
	U-17	100'-0"						10"	10"	10"	10"	1'-6"	1"	7"	7"								8	#6	B	#4	3														
1	K.3-17	100'-0"	-	-	-	-	10"	10"	10"	10"	2'-6"	1"	7"	7"	-	III	2	4	1"	1'-4"	4"	-	-	-	-	-	-	-	-	-	-	-	-	-	-	20.0	WA-S-102	FOR ADDITIONAL INFORMATION SEE FDN LOCATION PLAN			
	J.3-17	100'-0"					10"	10"	10"	10"	2'-6"	1"	7"	7"								8	#6	B	#4	5															
	J.3-16.3	100'-0"					10"	10"	10"	10"	2'-6"	1"	7"	7"								8	#6	B	#4	5															
	J.3-15.3	100'-0"					10"	10"	10"	10"	2'-6"	1"	7"	7"								8	#6	B	#4	5															
1	K.3-12.3	100'-0"	-	-	-	-	-	-	-	-	-	-	1"	7"	7"	-	III	2	4	1"	1'-4"	4"	-	-	-	-	-	-	-	-	-	-	-	-	-	42.0	WA-S-102	FOR ADDITIONAL INFORMATION SEE FDN LOCATION PLAN			
	J.3-12.3	100'-0"					1"	7"	7"	8	#6	B	#4	5																											
	J.3-11.3	100'-0"					1"	7"	7"	8	#6	B	#4	5																											
	J.3-10.3	100'-0"					1"	7"	7"	8	#6	B	#4	5																											
1	K.3-10.3	100'-0"	-	-	-	-	-	-	-	-	-	-	1"	7"	7"	-	III	2	4	1"	1'-4"	4"	-	-	-	-	-	-	-	-	-	-	-	-	-	-	14.3	WA-S-102	FOR ADDITIONAL INFORMATION SEE FDN LOCATION PLAN		
	L.3-10.3	100'-0"					10"	10"	10"	10"	2'-6"	1"	7"	7"	8								#6	B	#4	5															
1	P.3-14.3	100'-0"	-	-	-	-	10"	10"	10"	10"	2'-6"	1"	7"	7"	-	III	2	4	1"	1'-4"	4"	-	-	-	-	-	-	-	-	-	-	-	-	-	-	-	-	15.0	WA-S-102	FOR ADDITIONAL INFORMATION SEE FDN LOCATION PLAN	
	N.3-14.3	100'-0"					10"	10"	10"	10"	2'-6"	1"	7"	7"								8	#6	B	#4	5															
1	N.3-13.3	100'-0"	-	-	-	-	10"	10"	10"	10"	2'-6"	1"	7"	7"	-	III	2	4	1"	1'-4"	4"	-	-	-	-	-	-	-	-	-	-	-	-	-	-	-	-	-	-	-	-
	M.3-11.3	100'-0"					1"	7"	7"	8	#6	B	#4	5																											
1	M.3-10.3	100'-0"	-	-	-	-	-	-	-	-	-	-	1"	7"	7"	-	III	2	4	1"	1'-4"	4"	-	-	-	-	-	-	-	-	-	-	-	-	-	-	-	-			



This document and the design it covers are the property of PARSONS. They are loaned only with the borrower's expressed written agreement that they will not be reproduced, copied, loaned, exhibited, or used in any other way, except by written consent from PARSONS to the borrower.

NO.	DATE	BY	CHKD	ENGR	PROJ	DESCRIPTION
1	6-15-98	CKT	BP	BP	MDW	ISSUED FOR AS-BUILT

ISSUED FOR CONSTRUCTION  
 DRAWN MCS 6-24-96  
 CHECKED DDM 7-2-96  
 ENGINEER BP 6-28-96  
 PROJ MDW 7-9-96

**AS-BUILT DRAWINGS**

**PARSONS**  
 100 WEST WALNUT STREET  
 PASADENA, CALIFORNIA

**LIGO**  
 CALIFORNIA INSTITUTE OF TECHNOLOGY  
 MASSACHUSETTS INSTITUTE OF TECHNOLOGY

LASER INTERFEROMETER GRAVITATIONAL-WAVE OBSERVATORY SITE NO. 1 - HANFORD, WASHINGTON			
TITLE	SCALE	CONTRACT NUMBER	PROJECT NUMBER
STRUCTURAL CORNER STATION - OSB FOUNDATION SCHEDULE AND DETAILS SHEET 2	NONE	PP150969	8094
SHEET NUMBER	WA-S-403		REVISIONS