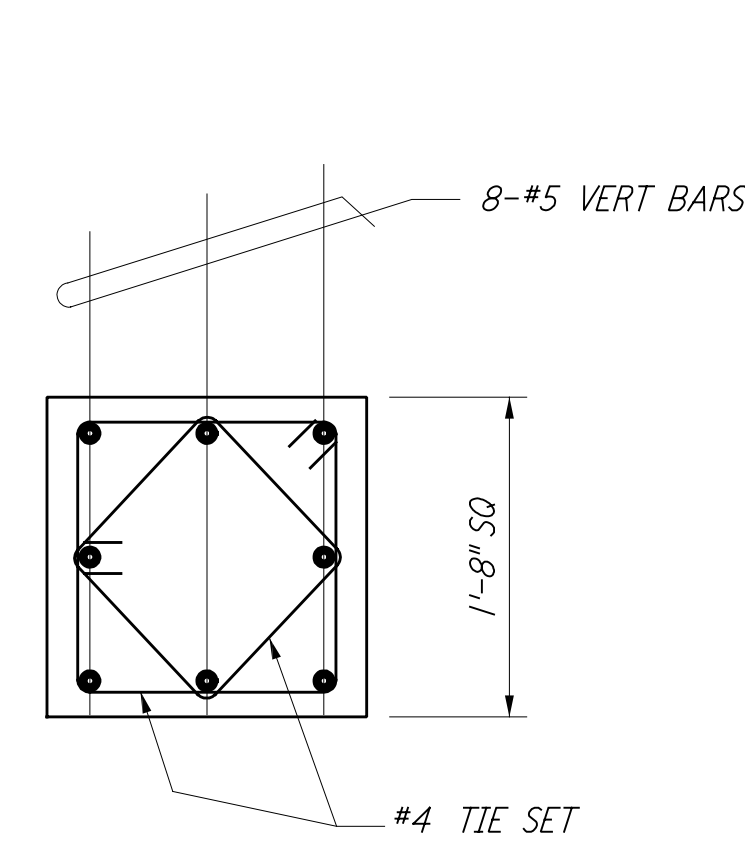
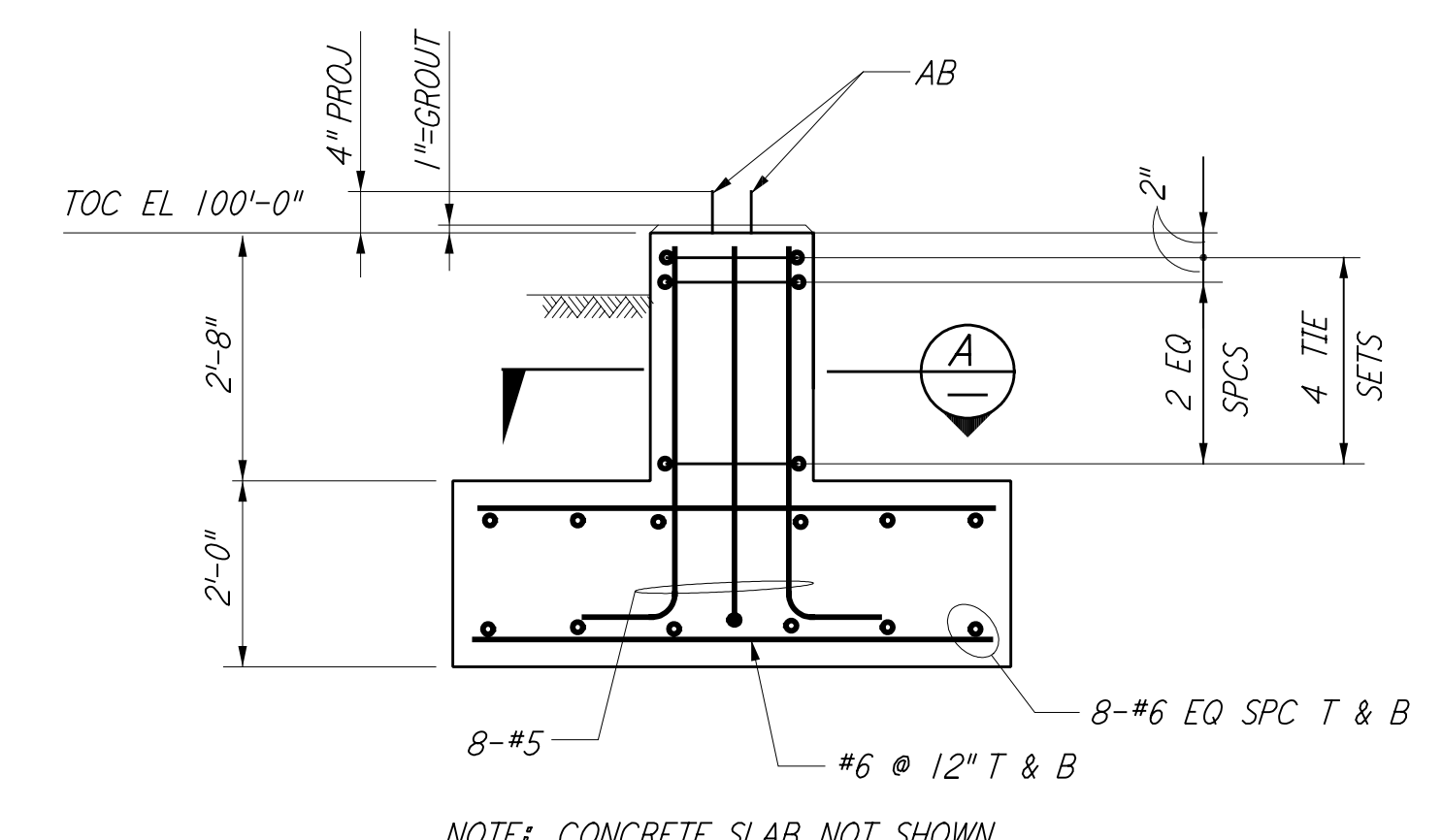


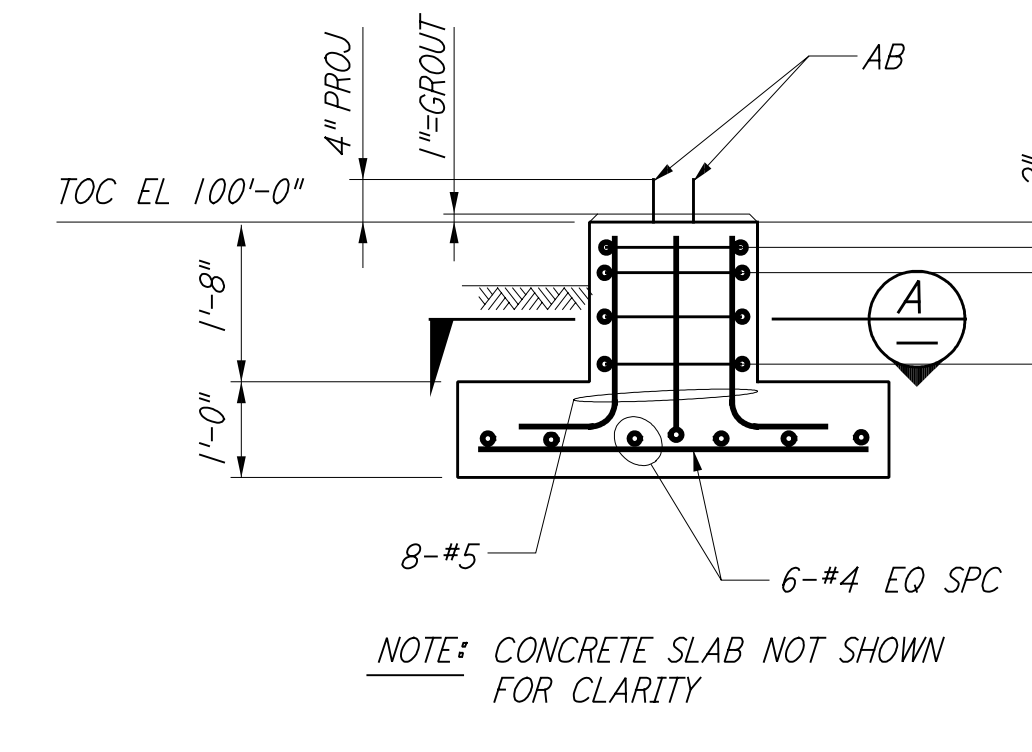
FOR FLOOR SLOPES SEE ARCHITECTURAL DWGS
FOUNDATION PLAN
 $\frac{1}{4}'' = 1'-0''$



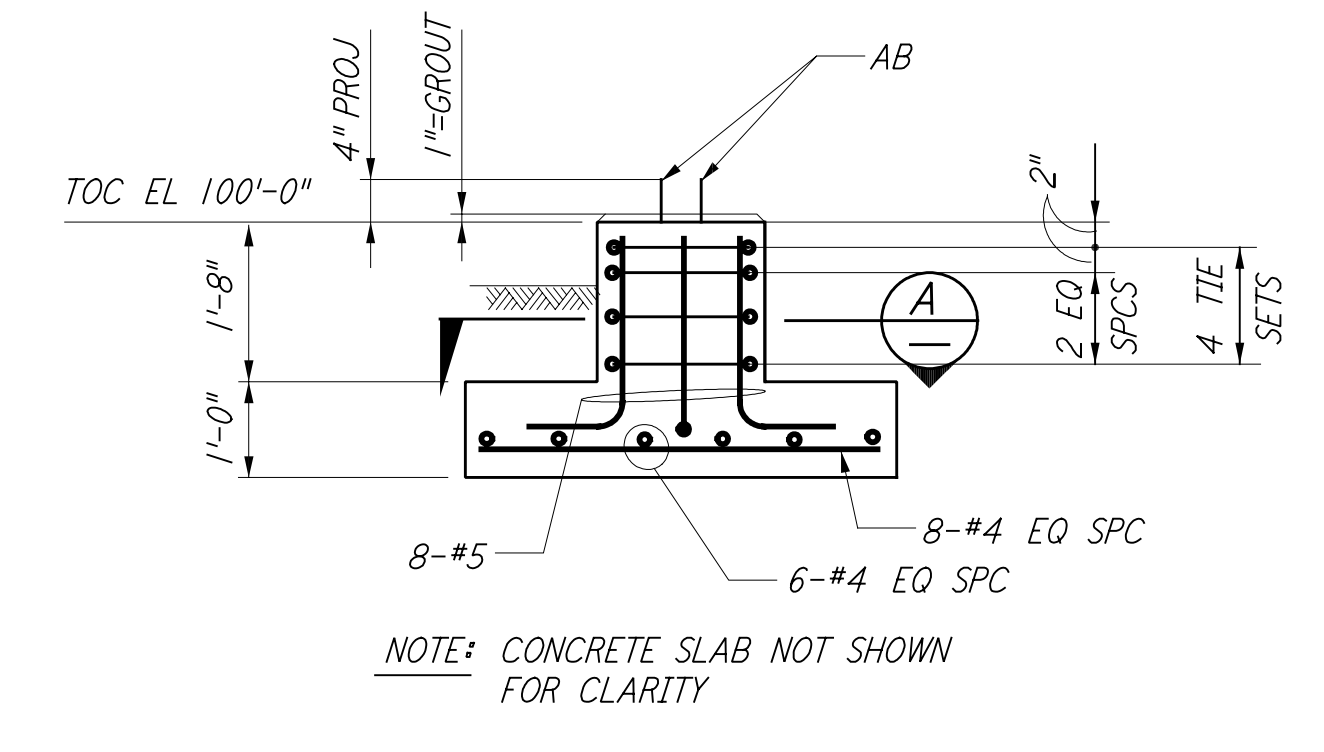
SECTION A
 $1'' = 1'-0''$



SECTION B
 $\frac{3}{8}'' = 1'-0''$

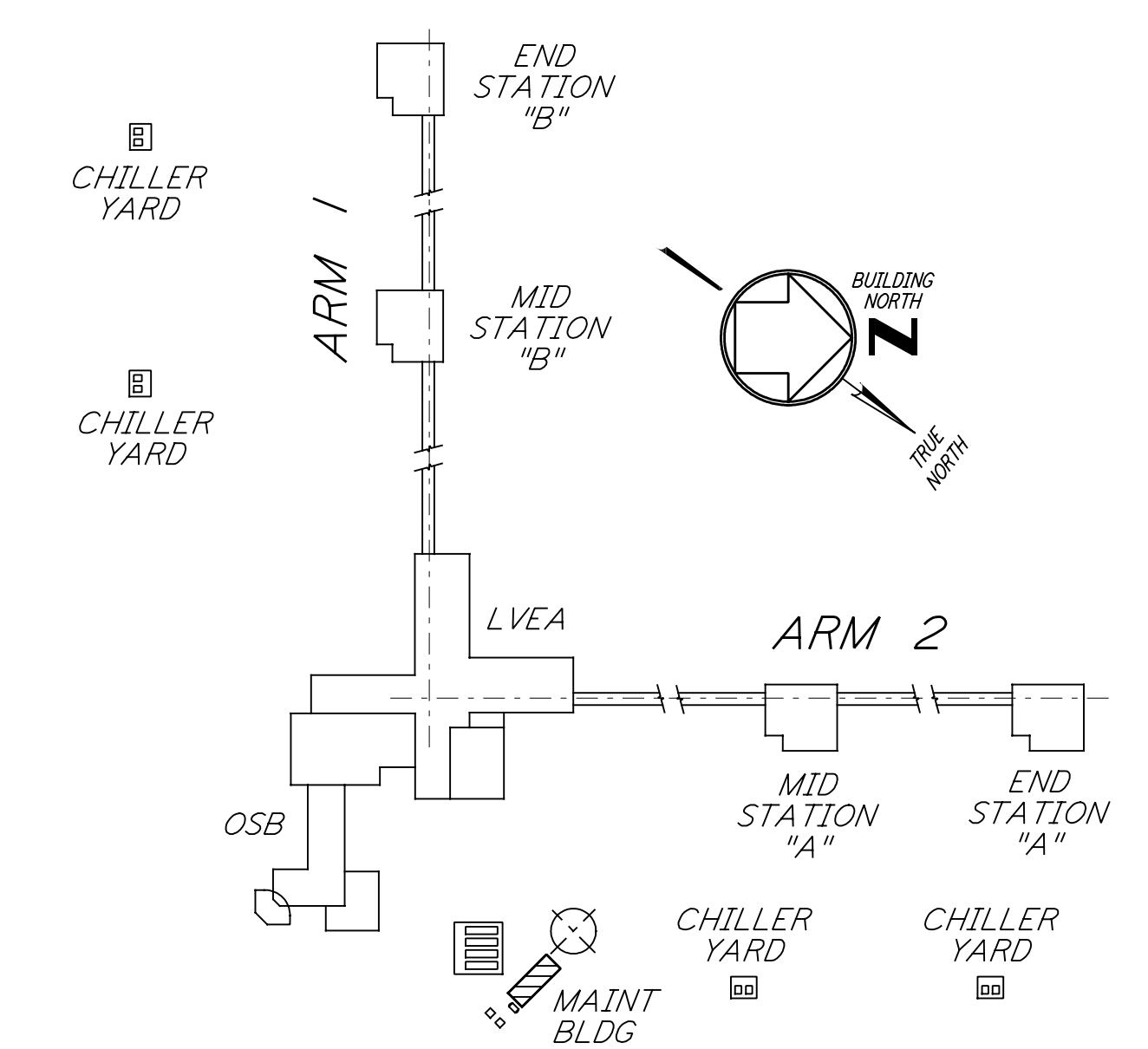
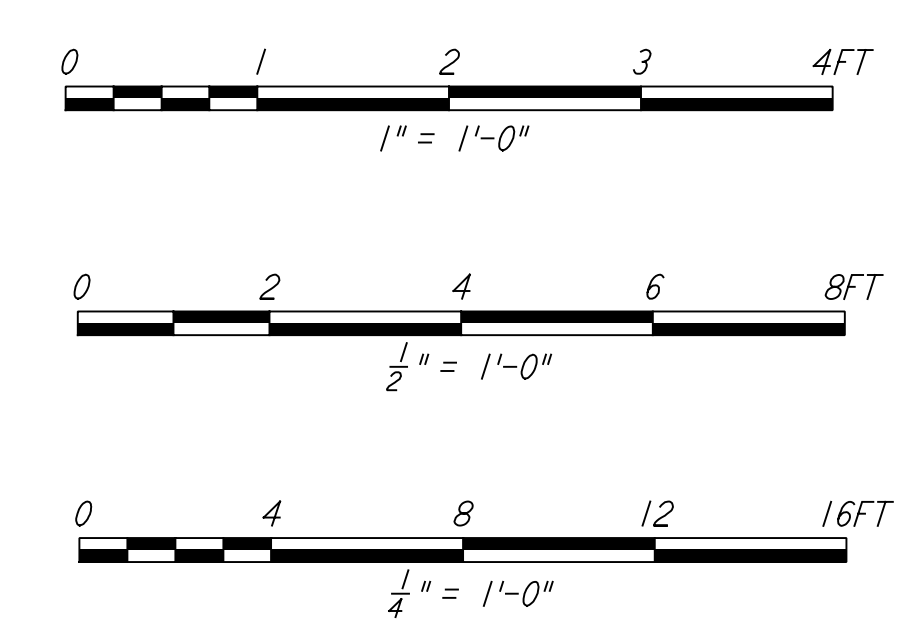


SECTION C
 $\frac{3}{8}'' = 1'-0''$



SECTION D
 $\frac{3}{8}'' = 1'-0''$

- NOTES:**
- FOR STRUCTURAL GENERAL NOTES, ABBREVIATIONS AND LEGEND SEE DWG. WA-S-001.
 - CONTRACTOR TO ADJUST LOCATION AND SIZE OF EQUIPMENT PADS TO SUIT VENDOR EQUIPMENT.



KEY PLAN
LIGO-D960306-01-0

NO.	DATE	BY	CHKD	ENGR	PROJ	DESCRIPTION
1	6-15-98	CKT				ISSUED FOR AS-BUILT

ISSUED FOR CONSTRUCTION			
DRAWN	PK	6-24-96	
CHECKED	DDM	7-2-96	
ENGINEER	BP	6-18-96	
PROJ	MDW	7-9-96	

AS-BUILT DRAWINGS



LASER INTERFEROMETER GRAVITATIONAL-WAVE OBSERVATORY SITE NO. 1 - HANFORD, WASHINGTON

TITLE	STRUCTURAL MAINTENANCE BUILDING FDN PLAN & SECTIONS	AS NOTED	PP150969	8094
SHEET NUMBER	WA-S-126	REVISIONS		

This document and the design it covers are the property of PARSONS. They are loaned only with the borrower's expressed written agreement that they will not be reproduced, copied, loaned, exhibited, or used in any other way, except by written consent from PARSONS to the borrower.

This document and the design it covers are the property of PARSONS. They are loaned only with the borrower's expressed written agreement that they will not be reproduced, copied, loaned, exhibited, or used in any other way, except by written consent from PARSONS to the borrower.

The user of this drawing shall be responsible for any errors or omissions. PARSONS shall not be responsible for any errors or omissions.