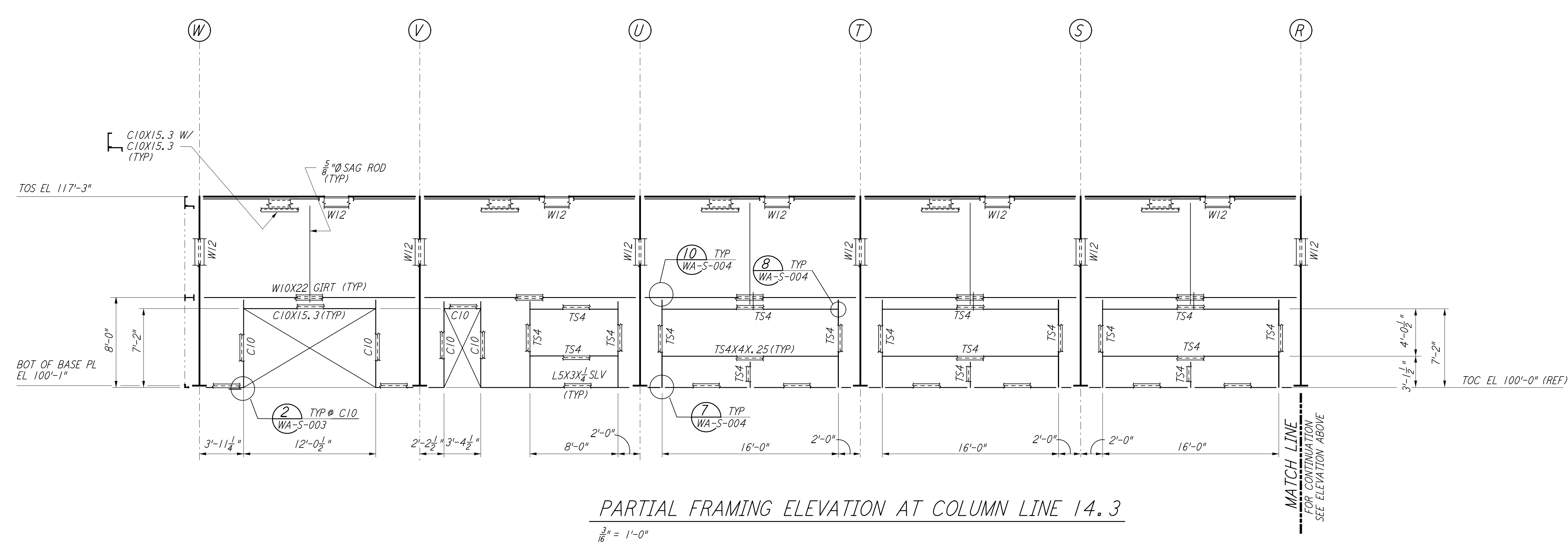
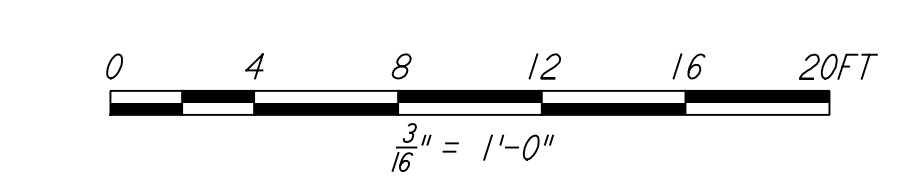


**PARTIAL FRAMING ELEVATION AT COLUMN LINE 14.3**  
 $\frac{3}{16}'' = 1'-0''$



**PARTIAL FRAMING ELEVATION AT COLUMN LINE 14.3**  
 $\frac{3}{16}'' = 1'-0''$

- NOTES:**
- FOR GENERAL NOTES, ABBREVIATIONS AND SYMBOLS SEE DRAWING WA-S-001.
  - FOR CHANNEL, GIRT AND EAVE STRUT CONNECTION DETAILS SEE DRAWING WA-S-005.
  - FOR W BEAM TO COLUMN WEB/FLANGE CONNECTIONS, SEE DETAILS 6, 3 & 4 TYPICAL UNLESS OTHERWISE NOTED.
  - FOR BASE ANGLE (L5X3) CONNECTIONS, SEE SECTION A WA-S-003
  - FOR VERT BRGC CONNECTIONS SEE 2 WA-S-006, 8 WA-S-006, 1 WA-S-007, 2 WA-S-007 TYP UON.



**LIGO-D960302-01-0**

NO.	DATE	BY	CHKD	ENGR	PROJ	DESCRIPTION
1	6-15-98	CKT				ISSUED FOR AS-BUILT

ISSUED FOR CONSTRUCTION			
DRAWN	MCS	6-24-96	
CHECKED	DDM	7-2-96	
ENGINEER	BP	6-28-96	
PROJ	MDW	7-9-96	
<b>AS-BUILT DRAWINGS</b>			



LASER INTERFEROMETER GRAVITATIONAL-WAVE OBSERVATORY SITE NO. 1 - HANFORD, WASHINGTON		
TITLE	AS NOTED	PROJECT NUMBER
STRUCTURAL CORNER STATION OSB FRAMING ELEVATIONS SHEET 5	PP150969	8094
SHEET NUMBER		REVISIONS
<b>WA-S-122</b>		

This document and the design it covers are the property of PARSONS. They are loaned only with the borrower's expressed written agreement that they will not be reproduced, copied, loaned, exhibited, or used in any other way, except by written consent from PARSONS to the borrower.

This document and the design it covers are the property of PARSONS. They are loaned only with the borrower's expressed written agreement that they will not be reproduced, copied, loaned, exhibited, or used in any other way, except by written consent from PARSONS to the borrower.

The user of this drawing is advised that the design is preliminary and subject to change without notice. The user of this drawing is advised that the design is preliminary and subject to change without notice.