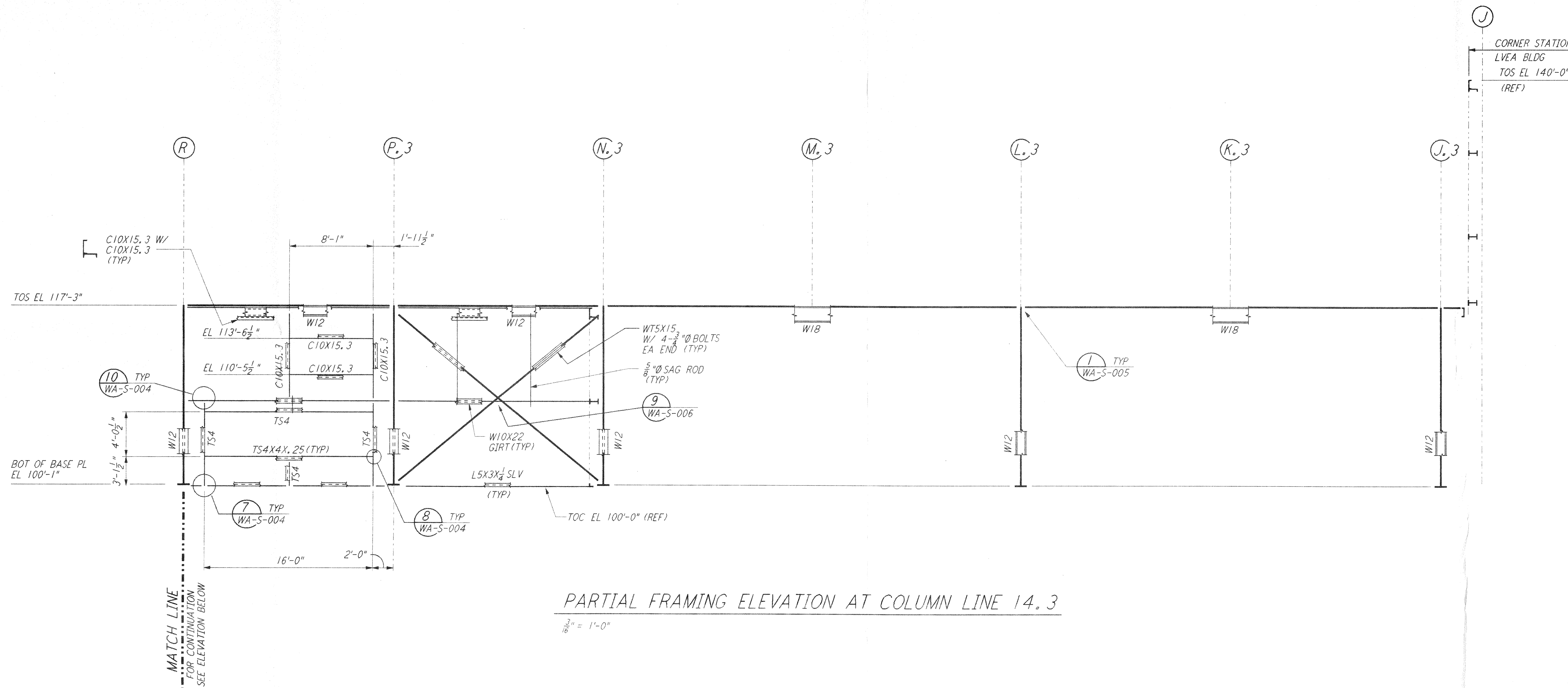
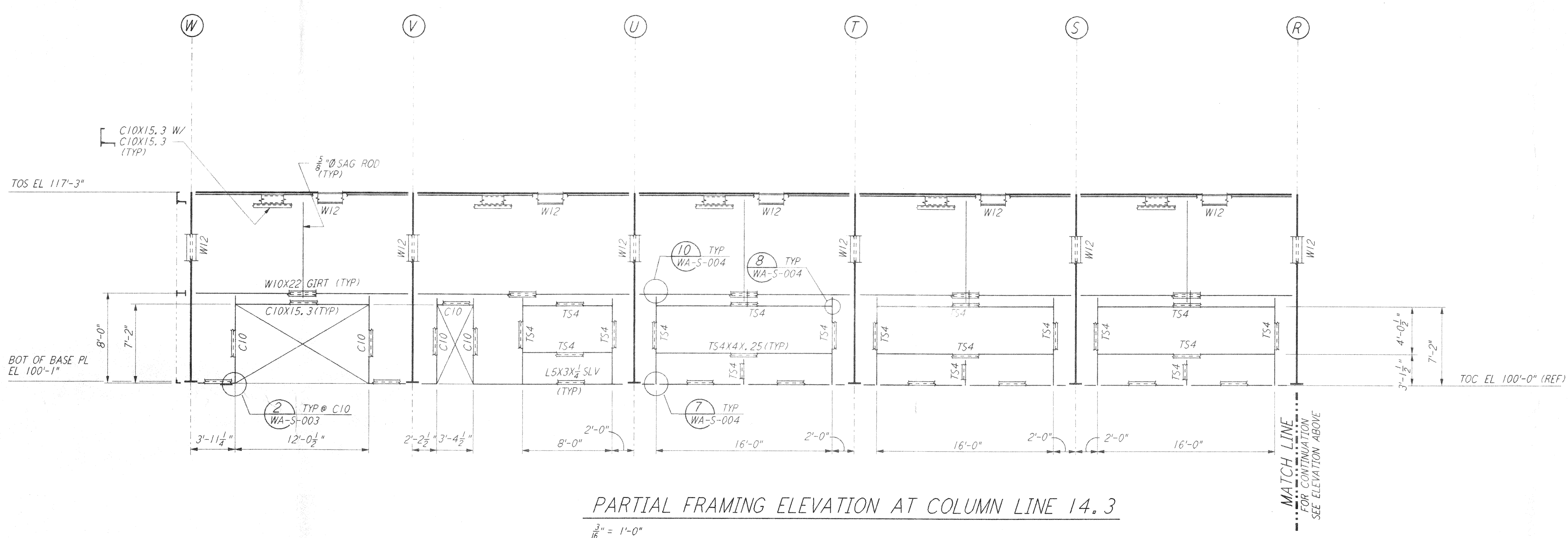


not be reproduced, copied, loaned, exhibited, or used in any other way, except by written consent from PARSONS to the borrower.

This document and the design it covers are the property of PARSONS. They are loaned only with the borrower's expressed written agreement that they will

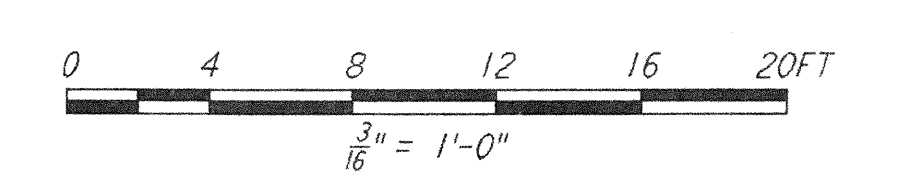


PARTIAL FRAMING ELEVATION AT COLUMN LINE 14.3
 $\frac{3}{8}'' = 1'-0''$



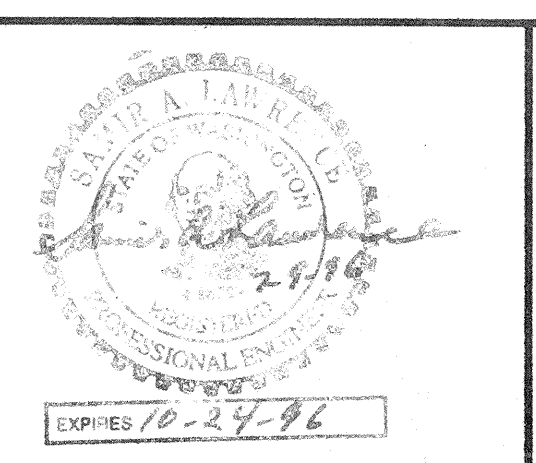
PARTIAL FRAMING ELEVATION AT COLUMN LINE 14.3
 $\frac{3}{8}'' = 1'-0''$

- NOTES:**
- FOR GENERAL NOTES, ABBREVIATIONS AND SYMBOLS SEE DRAWING WA-S-001.
 - FOR CHANNEL, GIRT AND EAVE STRUT CONNECTION DETAILS SEE DRAWING WA-S-005.
 - FOR W BEAM TO COLUMN WEB/FLANGE CONNECTIONS, SEE DETAILS (6) WA-S-004. (3) & (4) TYPICAL UNLESS OTHERWISE NOTED.
 - FOR BASE ANGLE (LSX3) CONNECTIONS, SEE SECTION (A) WA-S-003.
 - FOR VERT BRGC CONNECTIONS SEE (2) WA-S-006, (8) WA-S-006, (1) WA-S-007, (2) WA-S-007 TYP UON.



NO.	DATE	BY	CHKD	ENGR	PROJ	DESCRIPTION

ISSUED FOR CONSTRUCTION	MCS	6-24-96
DRAWN		
CHECKED		7-2-96
ENGINEER		6-28-96
PROJ		



PARSONS
 100 WEST WALNUT STREET
 PASADENA, CALIFORNIA

LIGO
 CALIFORNIA INSTITUTE OF TECHNOLOGY
 MASSACHUSETTS INSTITUTE OF TECHNOLOGY

LASER INTERFEROMETER
 GRAVITATIONAL-WAVE OBSERVATORY
 SITE NO. 1 - HANFORD, WASHINGTON

TITLE	AS NOTED	PP150969	8094
STRUCTURAL CORNER STATION OSB FRAMING ELEVATIONS SHEET 5	SHEET NUMBER	WA-S-122	

PROJECT NUMBER: 8094
 LIGO-D960302-00-0
 LTGOWAF.BDR