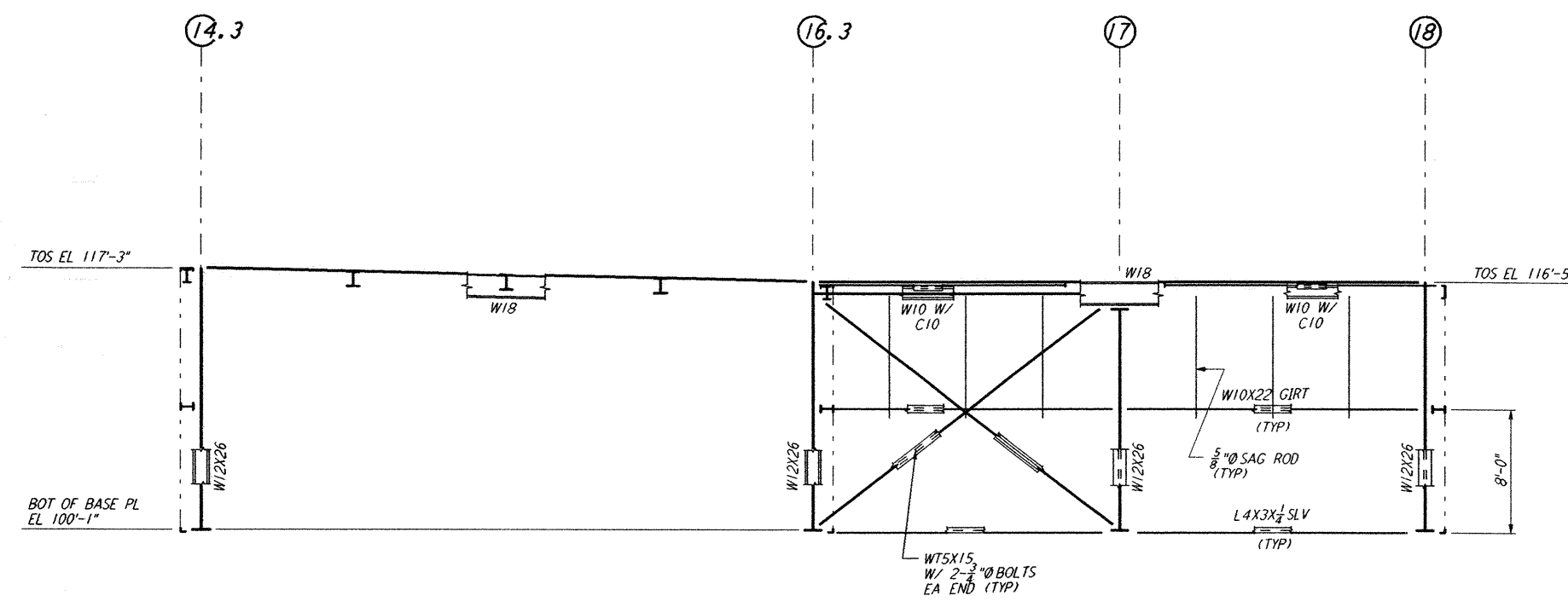
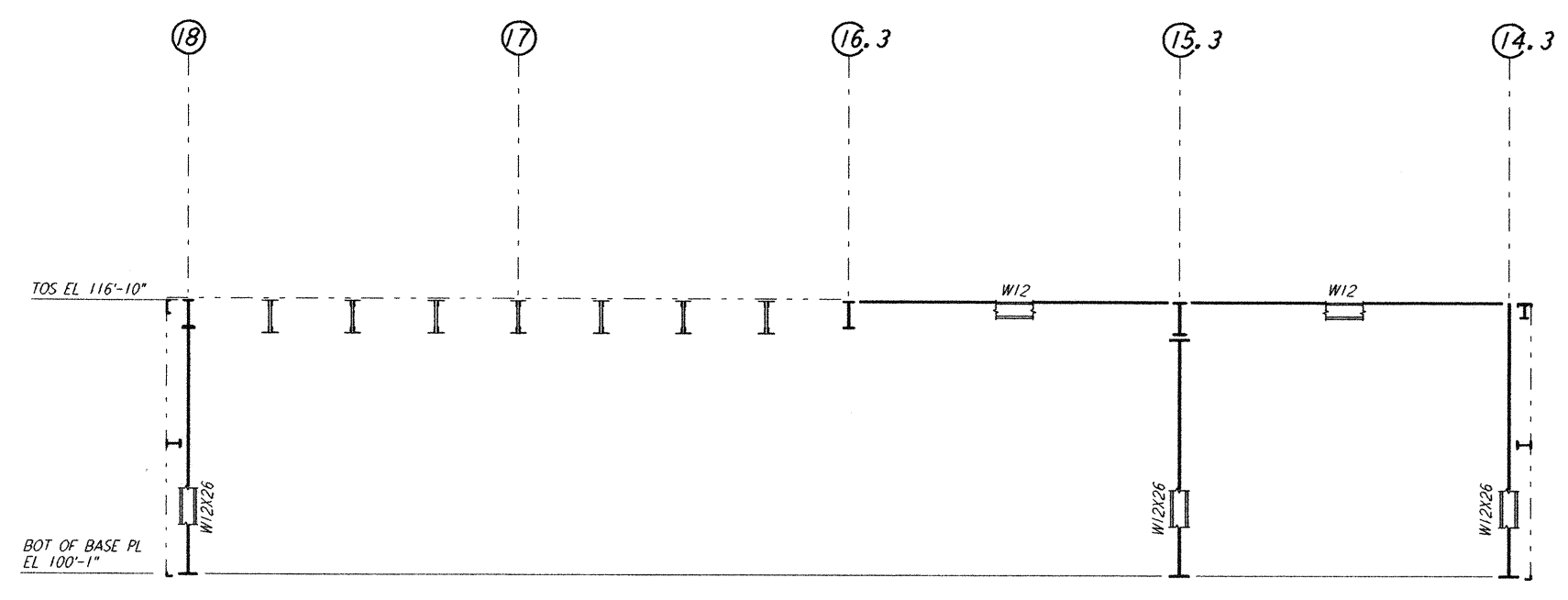


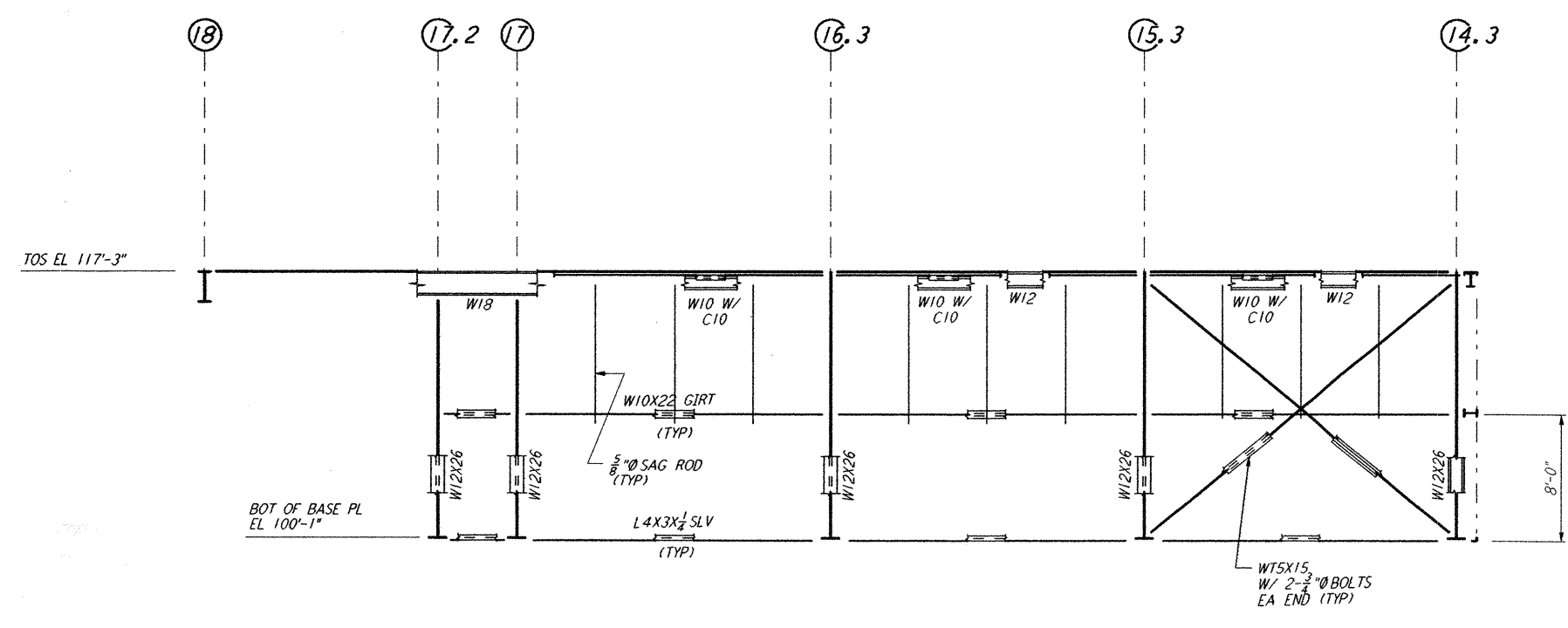
This document and the design it covers are the property of PARSONS. They are loaned only with the borrower's expressed written agreement that they will not be reproduced, copied, loaned, exhibited, or used in any other way, except by written consent from PARSONS to the borrower.



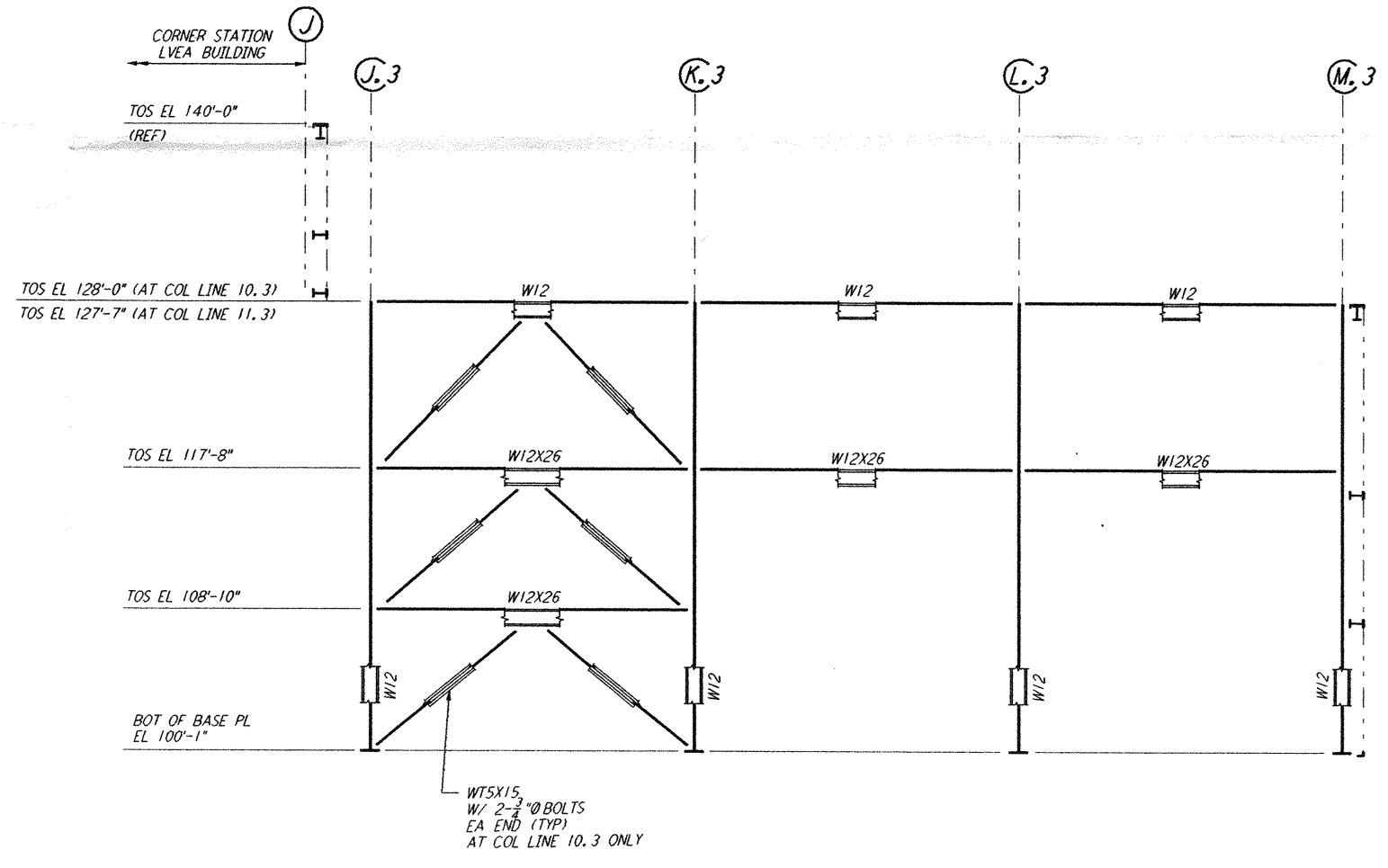
FRAMING ELEVATION AT COLUMN LINE U
 $\frac{3}{8}'' = 1'-0''$



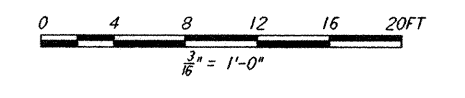
FRAMING ELEVATION AT COLUMN LINE V
 $\frac{3}{8}'' = 1'-0''$



FRAMING ELEVATION AT COLUMN LINE W
 $\frac{3}{8}'' = 1'-0''$



FRAMING ELEVATION AT COLUMN LINE 10.3 & 11.3
 $\frac{3}{8}'' = 1'-0''$



NO.	DATE	APRD BY	DESCRIPTION OF REVISION
9			
8			
7			
6			
5			
4			
3			
2			
1			

NO.	DATE	APRD BY	ISSUE	ISSUED FOR
A	10-31-95	TDM	PRELIMINARY DESIGN REVIEW	

DATE	10-31-95
DRAWN	MCS
CHECKED	
ENGINEER	
PROJ MGR	

PARSONS
 100 WEST WALNUT STREET
 PASADENA, CALIFORNIA

LIGO
 CALIFORNIA INSTITUTE OF TECHNOLOGY
 MASSACHUSETTS INSTITUTE OF TECHNOLOGY

LASER INTERFEROMETER
 GRAVITATIONAL-WAVE OBSERVATORY
 SITE NO. 1 - HANFORD, WASHINGTON

TITLE: CORNER STATION (OSB) FRAMING ELEVATIONS SHEET 3

AS NOTED PP150969 8094

WA-S-120

Mon Oct 30 22:21:26 1995 S3-V18B2 J:\PLOTS\QUEUES\V18B2\ST120A.PRF