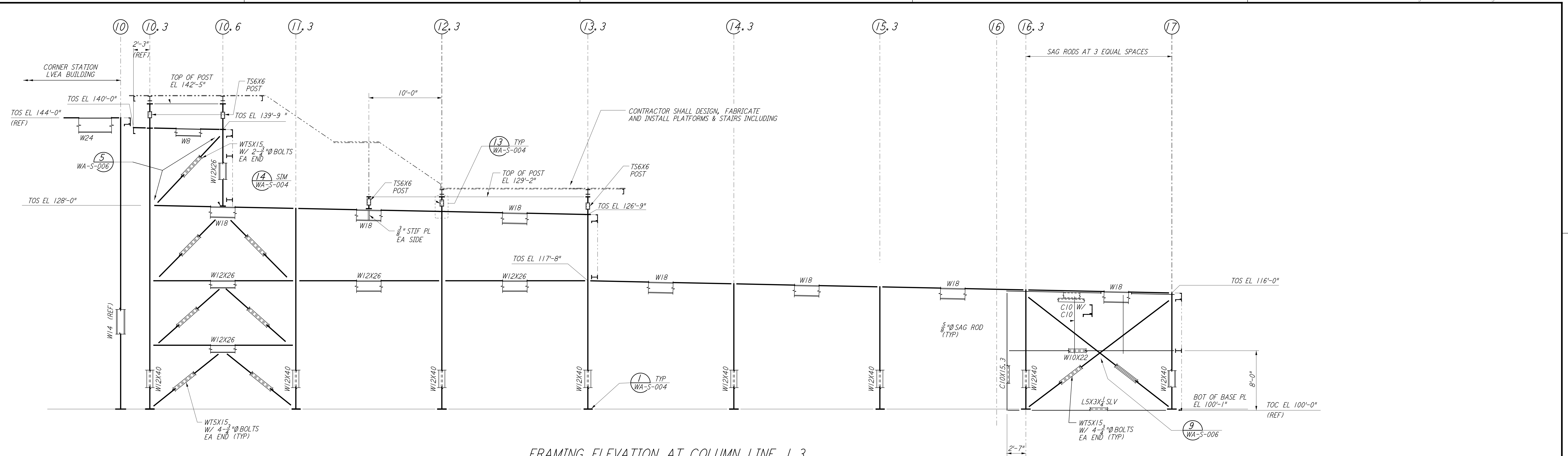
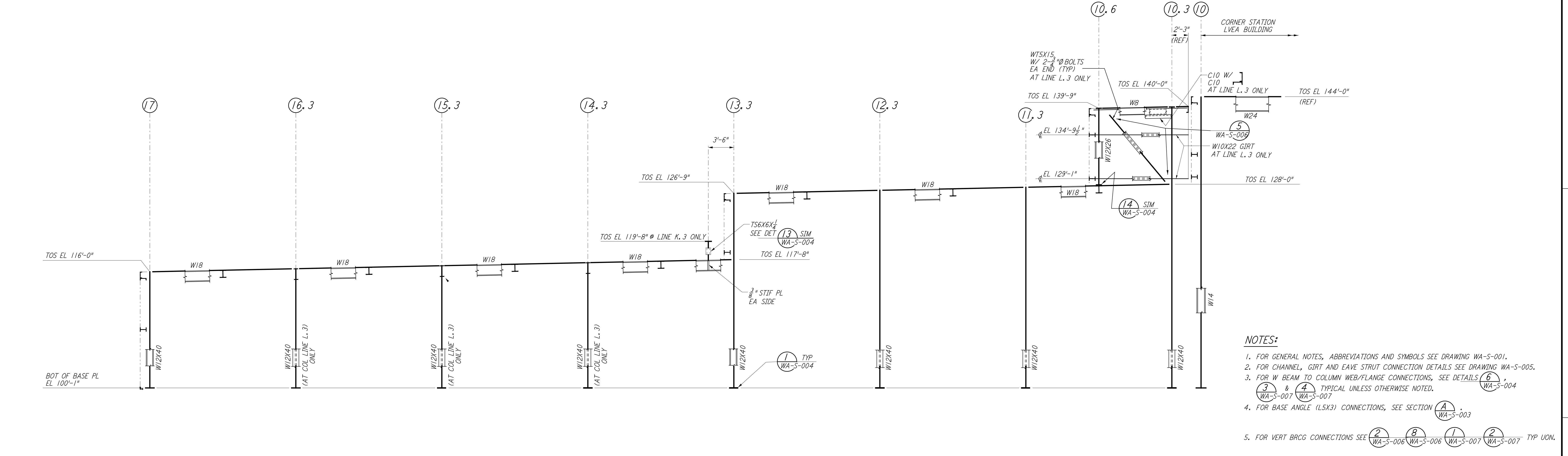


This document and the design it covers are the property of PARSONS. They are loaned only with the borrower's expressed written agreement that they will not be reproduced, copied, loaned, exhibited, or used in any other way, except by written consent from PARSONS to the borrower.

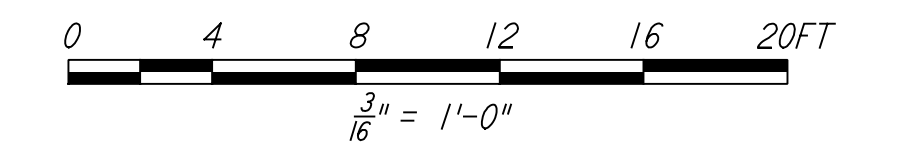


FRAMING ELEVATION AT COLUMN LINE J. 3  
 $\frac{3}{8}'' = 1'-0''$



FRAMING ELEVATION AT COLUMN LINE K. 3 & L. 3  
 $\frac{3}{8}'' = 1'-0''$

- NOTES:**
- FOR GENERAL NOTES, ABBREVIATIONS AND SYMBOLS SEE DRAWING WA-S-001.
  - FOR CHANNEL, GIRT AND EAVE STRUT CONNECTION DETAILS SEE DRAWING WA-S-005.
  - FOR W BEAM TO COLUMN WEB/FLANGE CONNECTIONS, SEE DETAILS (6) WA-S-004 & (4) WA-S-007 TYP UNLESS OTHERWISE NOTED.
  - FOR BASE ANGLE (LSX3) CONNECTIONS, SEE SECTION (A) WA-S-003.
  - FOR VERT BRGC CONNECTIONS SEE (2) WA-S-006 (8) WA-S-006 (1) WA-S-007 (2) WA-S-007 TYP UON.



LIGO-D960298-01-O

NO.	DATE	BY	CHKD	ENGR	PROJ	DESCRIPTION
1	6-15-98	CKT				ISSUED FOR AS-BUILT

ISSUED FOR CONSTRUCTION		
DRAWN	MCS	6-24-96
CHECKED	DDM	7-2-96
ENGINEER	BP	6-28-96
PROJ	MDW	7-9-96

**AS-BUILT DRAWINGS**



LASER INTERFEROMETER GRAVITATIONAL-WAVE OBSERVATORY  
 SITE NO. 1 - HANFORD, WASHINGTON

**STRUCTURAL CORNER STATION OSB FRAMING ELEVATIONS SHEET 1**

SCALE: AS NOTED  
 SHEET NUMBER: PPI50969  
 PROJECT NUMBER: 8094

**WA-S-118**