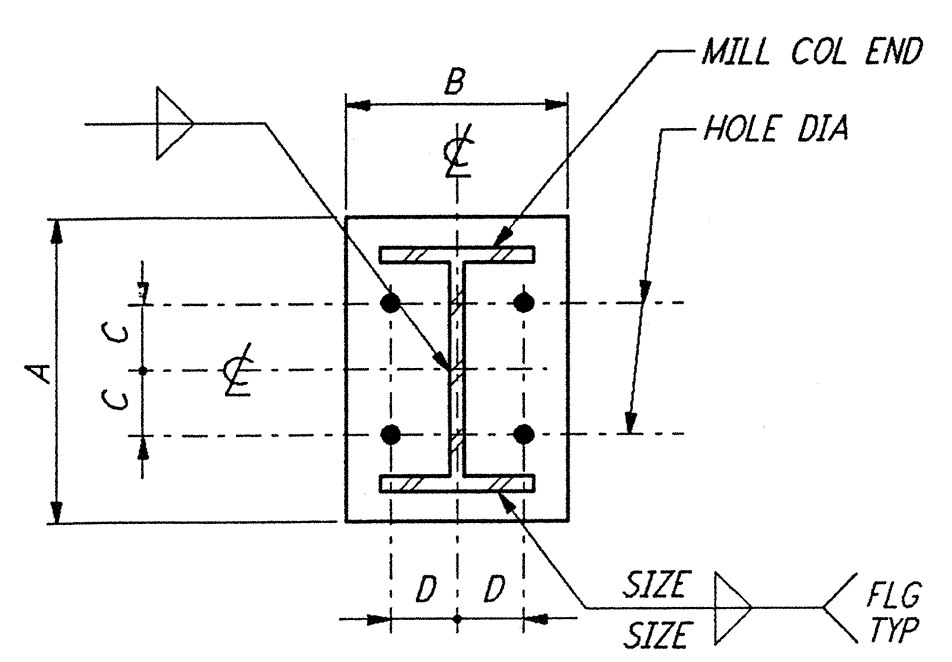
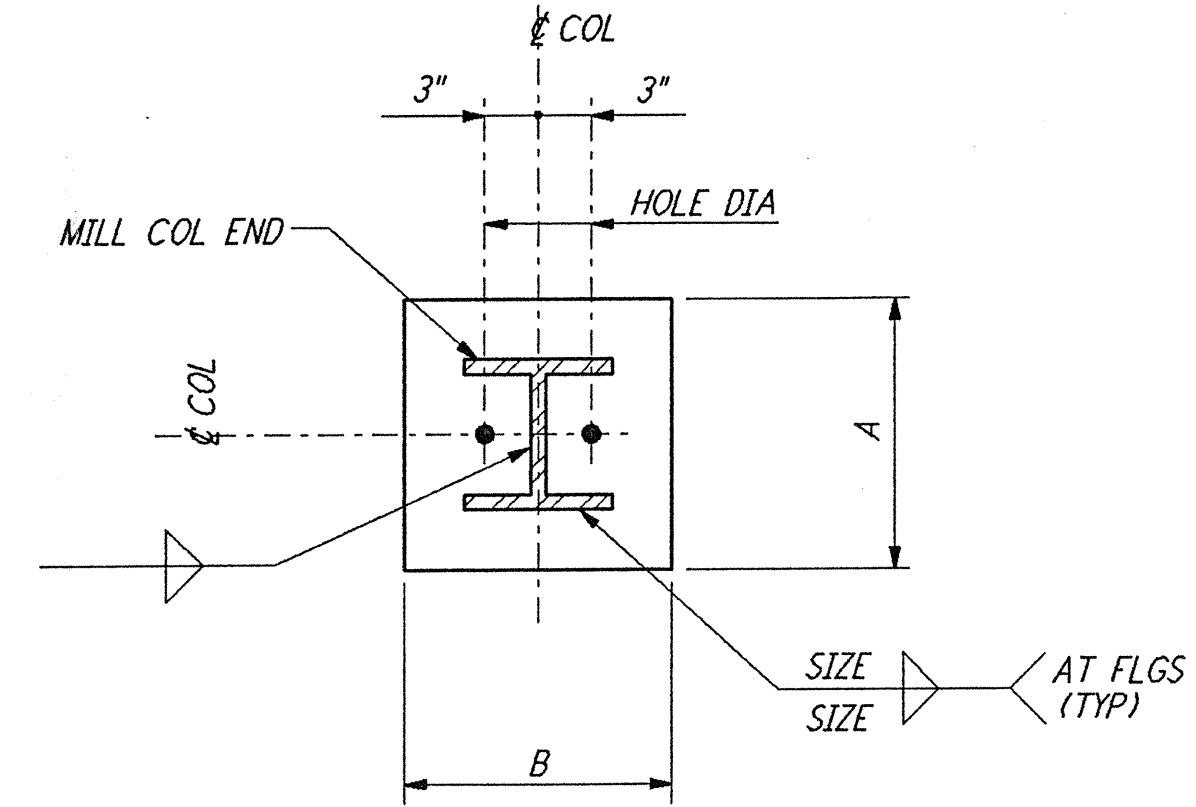


This document and the design it covers are the property of PARSONS. They are loaned only with the borrower's expressed written agreement that they will not be reproduced, copied, loaned, exhibited, or used in any other way, except by written consent from PARSONS to the borrower.



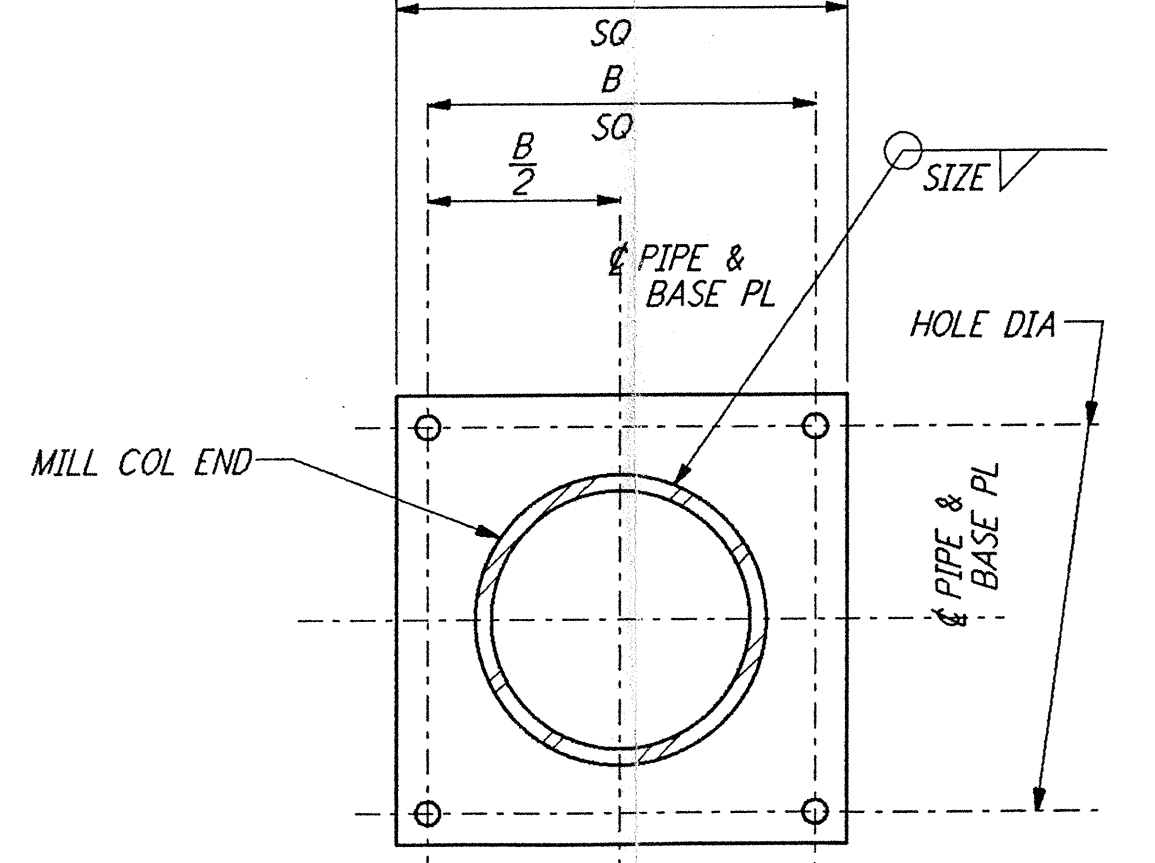
BASE PLATE SCHEDULE							
MEMBER SIZE	A	B	C	D	PL THICK	DIA HOLE	SIZE WELD
WB	1'-0"	0'-11"	2 1/2"	2 1/2"	1"	1 5/8"	5/16"
W10	1'-0"	0'-11"	3"	3"	1"	1 3/8"	5/16"
W12	1'-2"	0'-11"	3 1/2"	3 1/2"	1 1/4"	1 5/8"	3/8"
W14	1'-4"	1'-4"	3 1/2"	3 1/2"	1 1/2"	1 5/8"	7/16"
W16	1'-6"	1'-4"	3 1/2"	3 1/2"	1 1/2"	1 5/8"	7/16"

BASE PLATE DETAILS (1)



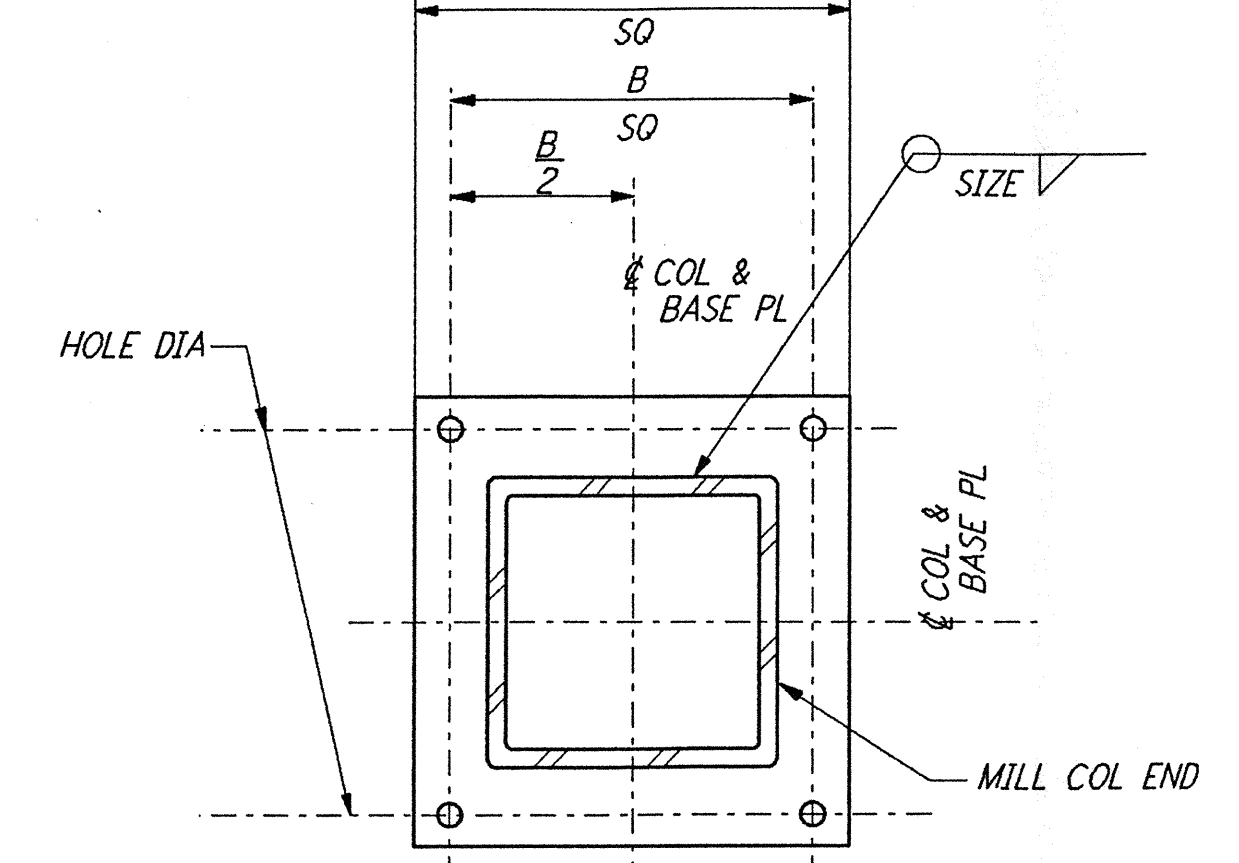
BASE PLATE SCHEDULE					
MEMBER SIZE	A	B	PL THICK	DIA HOLE	SIZE WELD
WB	0'-10"	0'-10"	3/4"	1 3/8"	1/4"
W10	1'-0"	0'-10"	1"	1 3/8"	5/16"
W12	1'-2"	0'-10"	1"	1 3/8"	5/16"
W14	1'-4"	0'-10"	1 1/4"	1 5/8"	7/16"
W16	1'-6"	0'-10"	1 1/2"	1 5/8"	7/16"

BASE PLATE DETAIL (2)



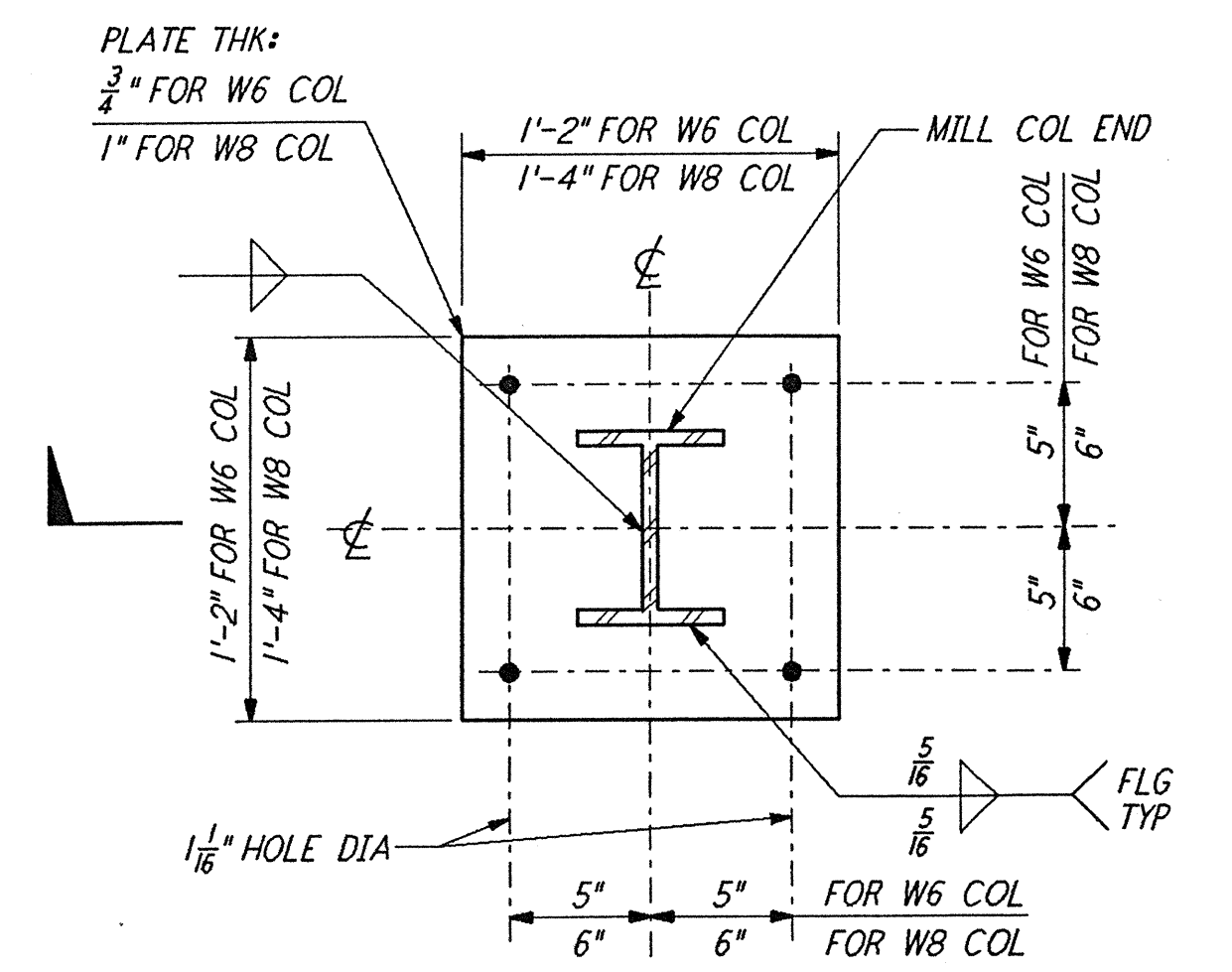
BASE PLATE SCHEDULE					
PIPE DIA	A	B	PL THICK	HOLE DIA	SIZE WELD
3"	1'-0"	0'-6"	3/4"	1 3/8"	3/16"
4"	1'-0"	0'-8"	1"	1 3/8"	1/4"
5"	1'-2"	0'-10"	1 1/4"	1 3/8"	1/4"
6"	1'-4"	1'-0"	1 1/4"	1 3/8"	1/8"
8"	1'-4"	1'-0"	1 1/2"	1 3/8"	3/8"

PIPE BASE PLATE DETAIL (3)

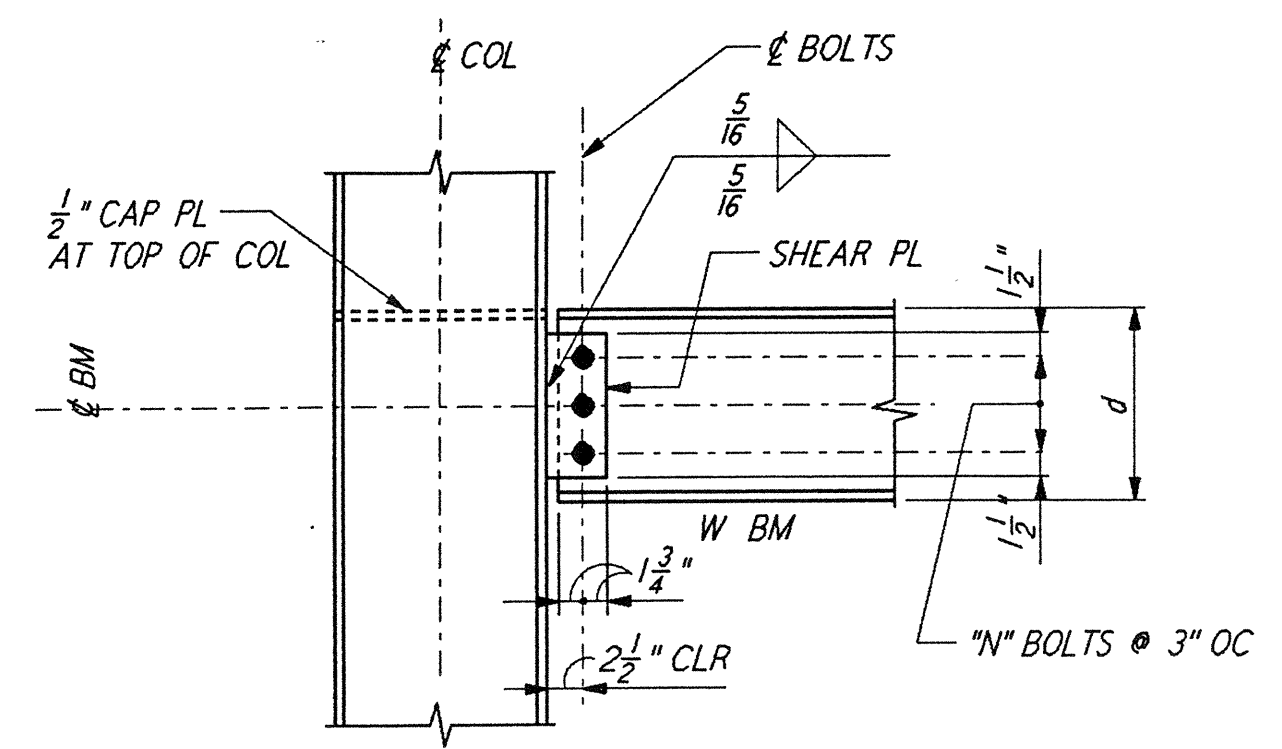


BASE PLATE SCHEDULE					
COL SIZE	A	B	PL THICK	HOLE DIA	SIZE WELD
TS4X4	1'-0"	0'-8"	1"	1 5/8"	1/4"
TSSX5	1'-2"	0'-10"	1 1/4"	1 5/8"	1/4"
TS6X6	1'-4"	1'-0"	1 1/4"	1 5/8"	5/16"
TS7X7	1'-6"	1'-2"	1 1/2"	1 5/8"	1/8"
TS8X8	1'-6"	1'-2"	1 1/2"	1 5/8"	1/8"

TS BASE PLATE DETAIL (4)

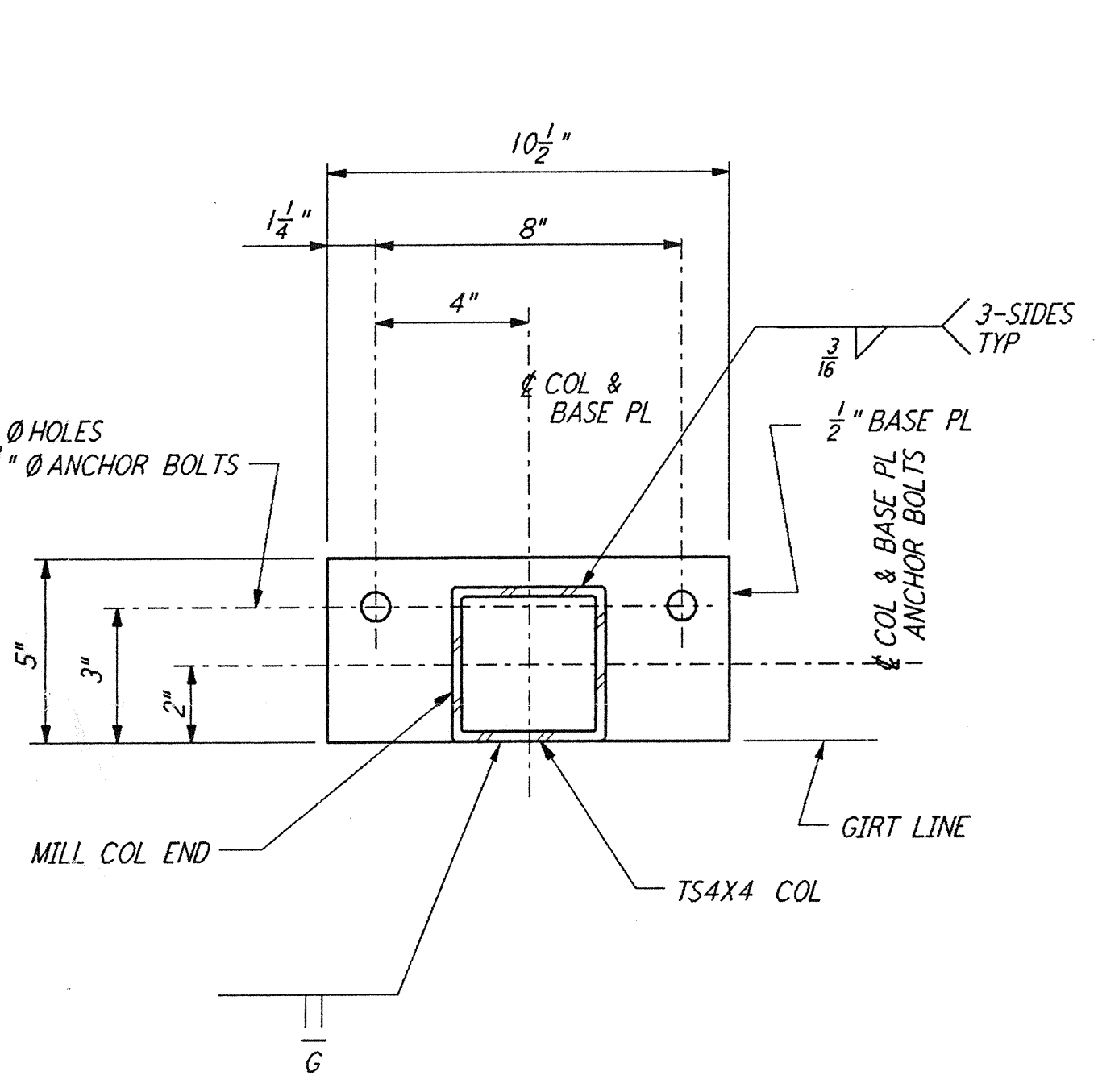


BASE PLATE DETAIL (5)

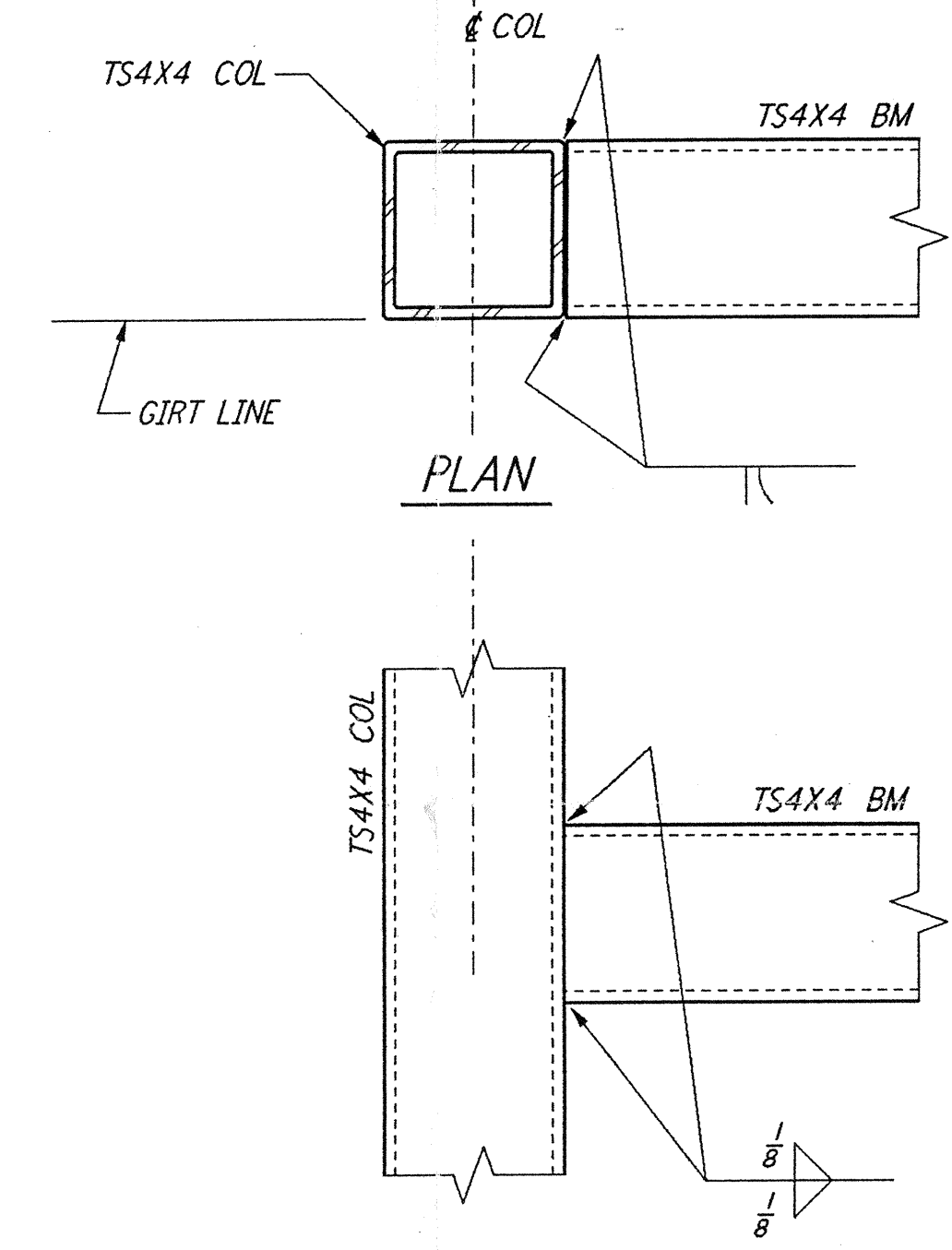


SCHEDULE	
BEAM DEPTH d (INCHES)	NO. OF BOLTS "M"
8, 10	2
12, 14	3
16, 18	4
21, 24, 27	5
30, 33, 36	6

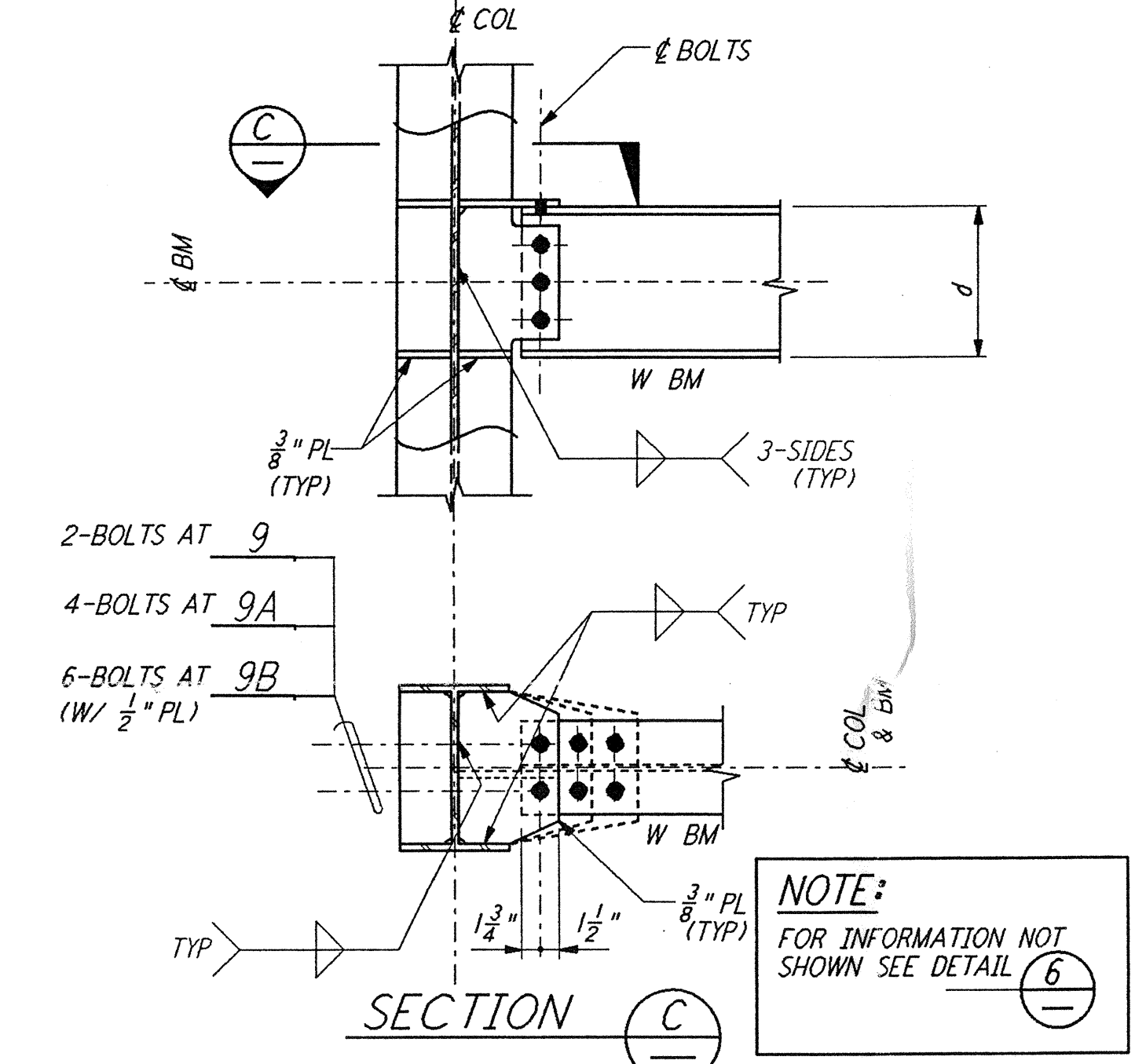
BEAM TO COLUMN CONNECTION DETAIL (6)



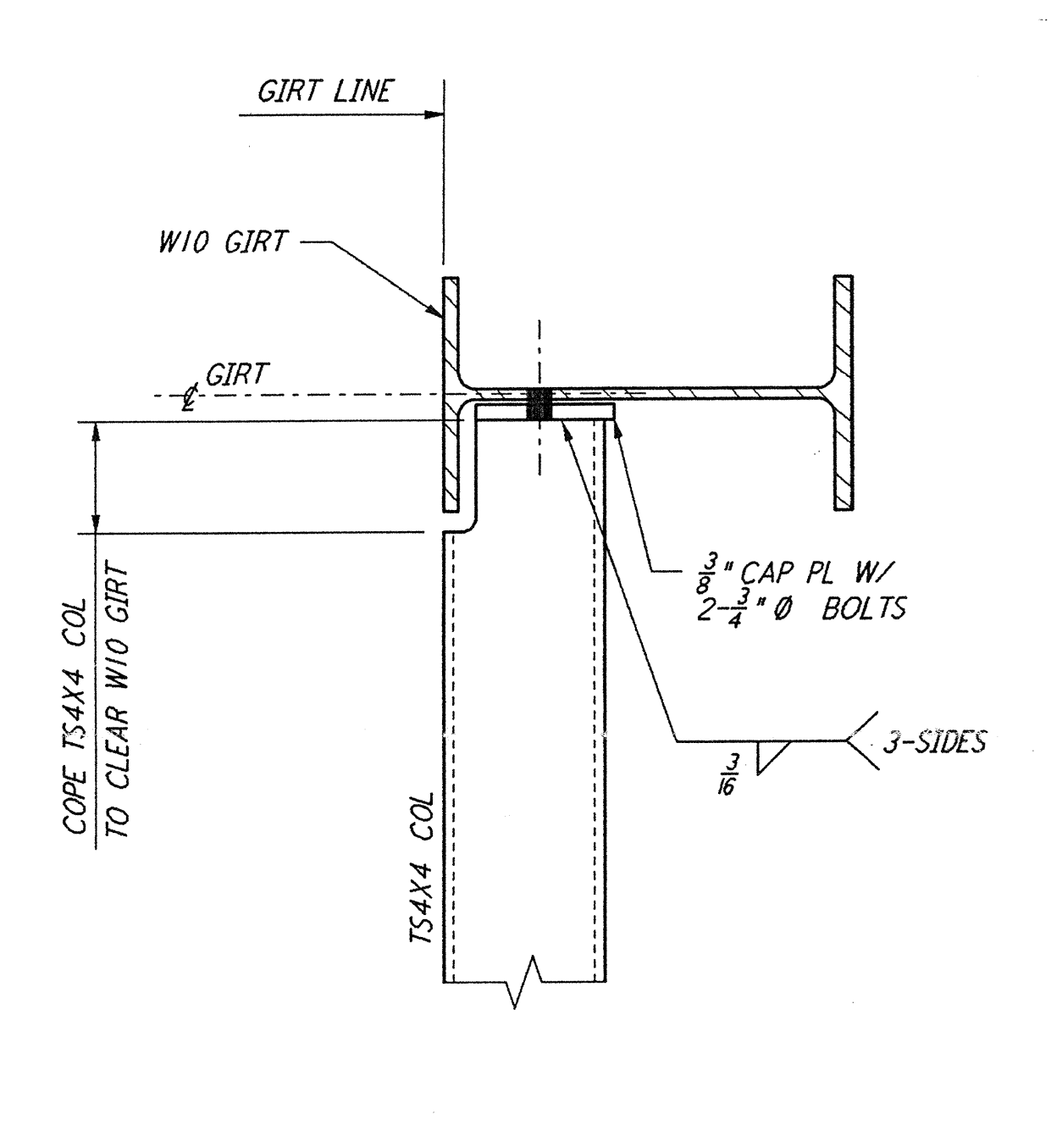
BASE PLATE DETAIL (7)



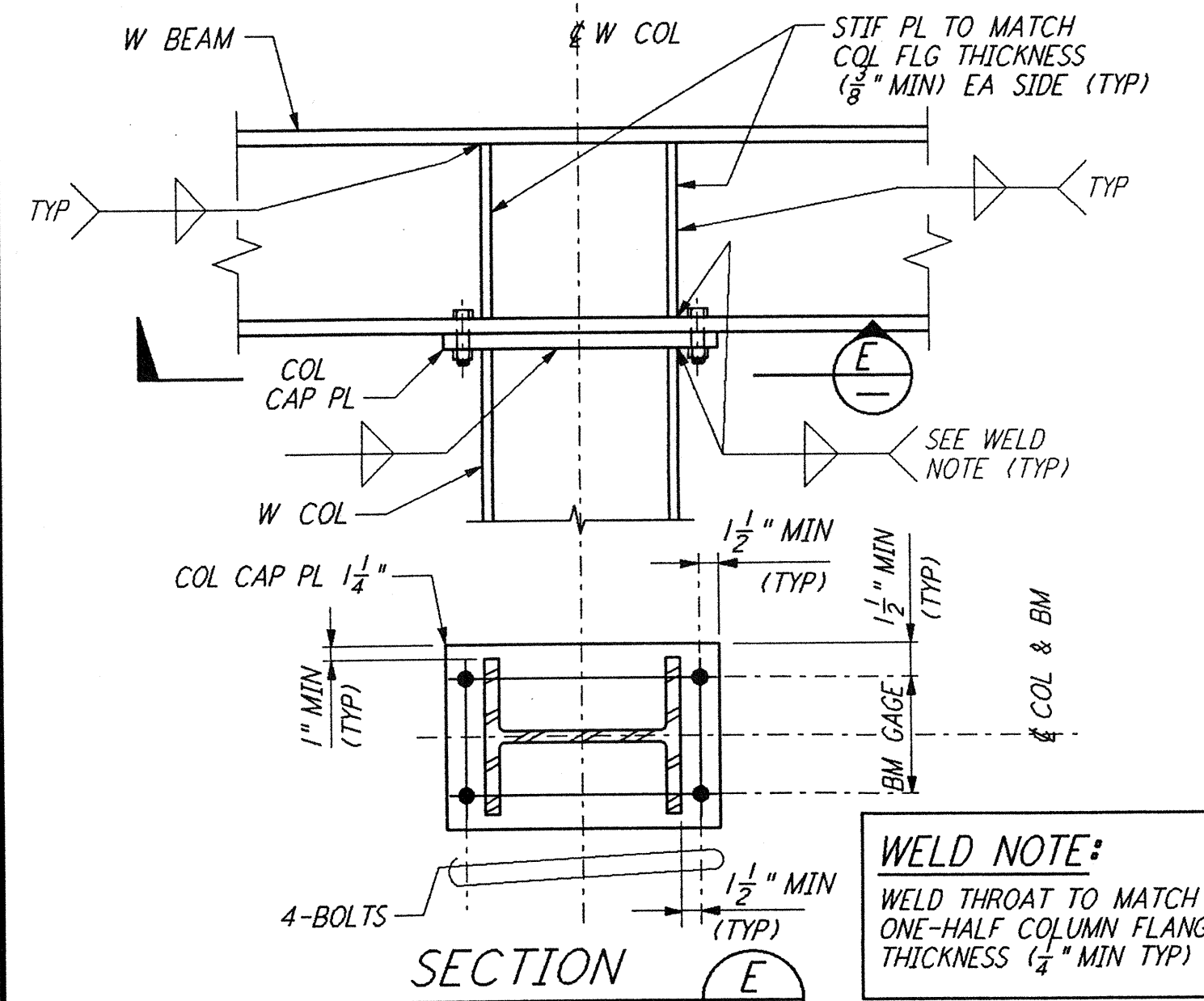
ELEVATION DETAIL (8)



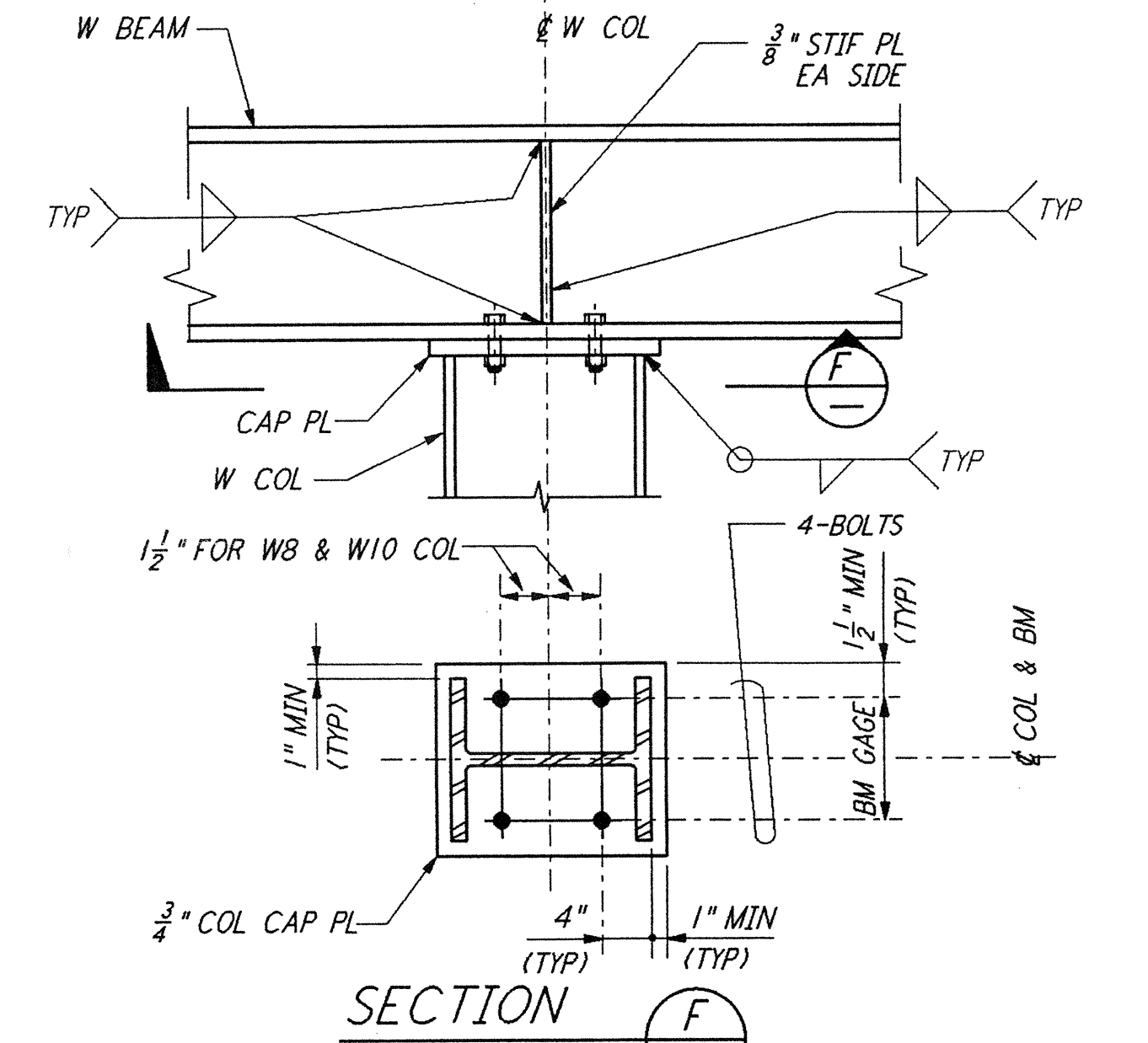
STRUT BEAM TO COLUMN CONNECTION DETAIL (9, 9A, 9B)



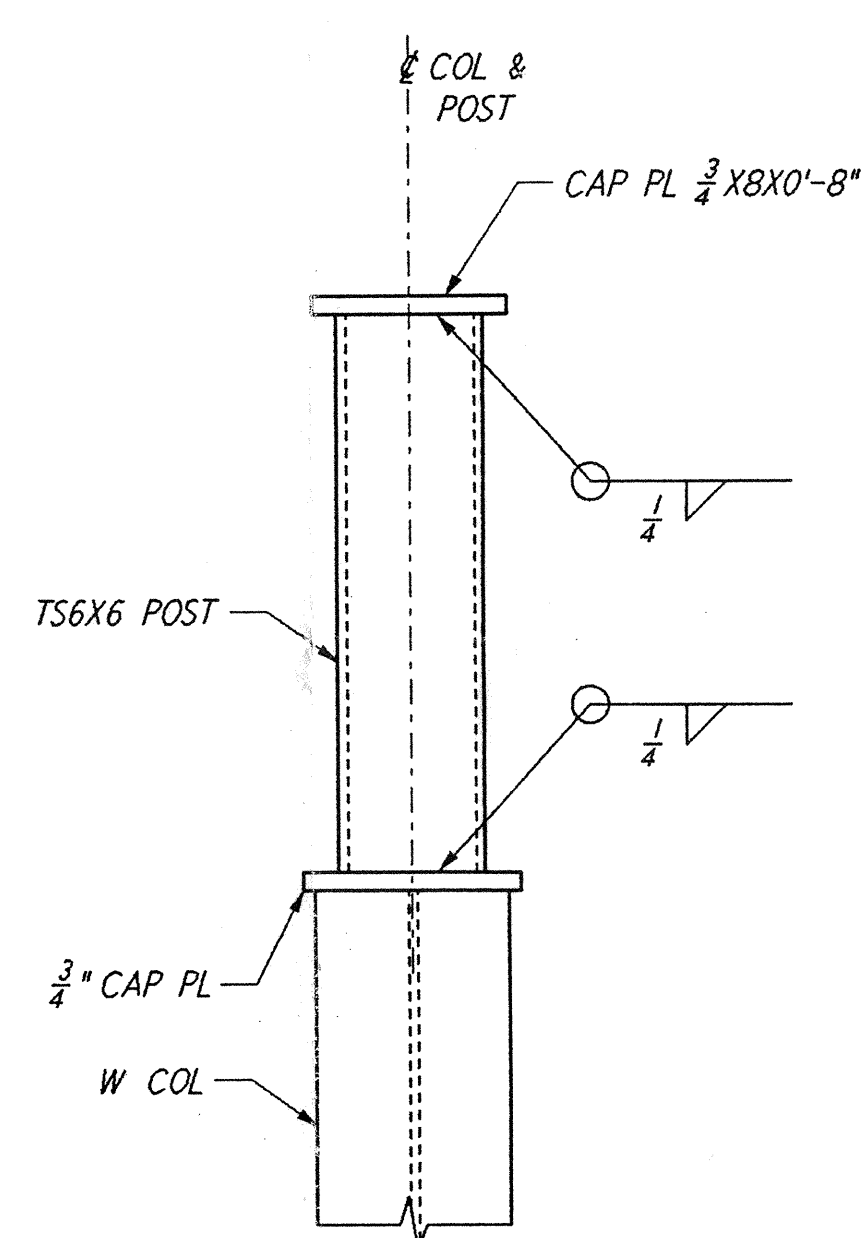
DETAIL (10)



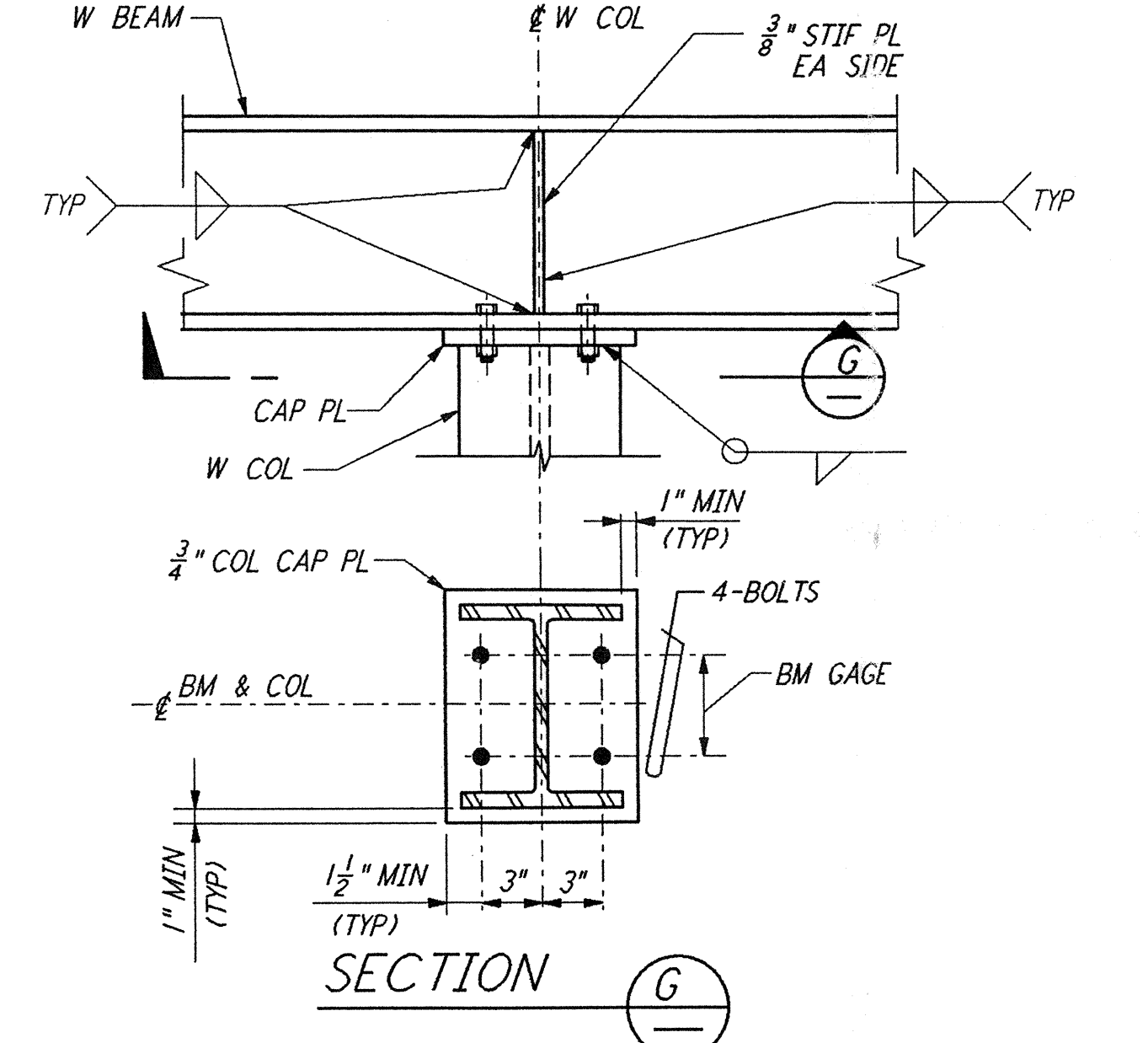
BEAM TO COLUMN BOLTED MOMENT CONNECTION DETAIL (11)



BEAM TO COLUMN BOLTED CONNECTION DETAIL (12)



ROOF PLATFORM SUPPORT DETAIL (13)



BEAM TO COLUMN BOLTED CONNECTION DETAIL (14)

NOTES:
 1. FOR GENERAL NOTES, ABBREVIATIONS AND SYMBOLS, SEE DRAWING S-100.

Date Received: 4/19/96	LIGO: D-960299-B-01
Contract # 4719/96	Contractor: WA-S-004 2200
TM # 28	LIGO: C960297-00-V
Date: 4/19/96	Approved:
TM #	LIGO:
Date: / /	Approved:
Client/Transmittal:	LIGO:
Date: / /	Approved:

REV	NO.	DATE	BY	CHKD	ENGR	PROJ	DESCRIPTION
B	4-19-96	MCS	rbm	BP			FINAL DESIGN REVIEW & BID
A	10-31-95						PRELIMINARY DESIGN REVIEW

DRAWN	MCS
CHECKED	
ENGINEER	
PROJ	

PARSONS
 100 WEST WALNUT STREET
 PASADENA, CALIFORNIA

LIGO
 CALIFORNIA INSTITUTE OF TECHNOLOGY
 MASSACHUSETTS INSTITUTE OF TECHNOLOGY

LASER INTERFEROMETER
 GRAVITATIONAL-WAVE OBSERVATORY
 SITE NO. 1 - HANFORD, WASHINGTON

TITLE	SCALE	CONTRACT NUMBER	PROJECT NUMBER
STRUCTURAL STANDARD	NONE	PP150969	8094
STRUCTURAL STEEL CONNECTION DETAILS SHEET 1		WA-S-004	

LIGO-D960299-B-01