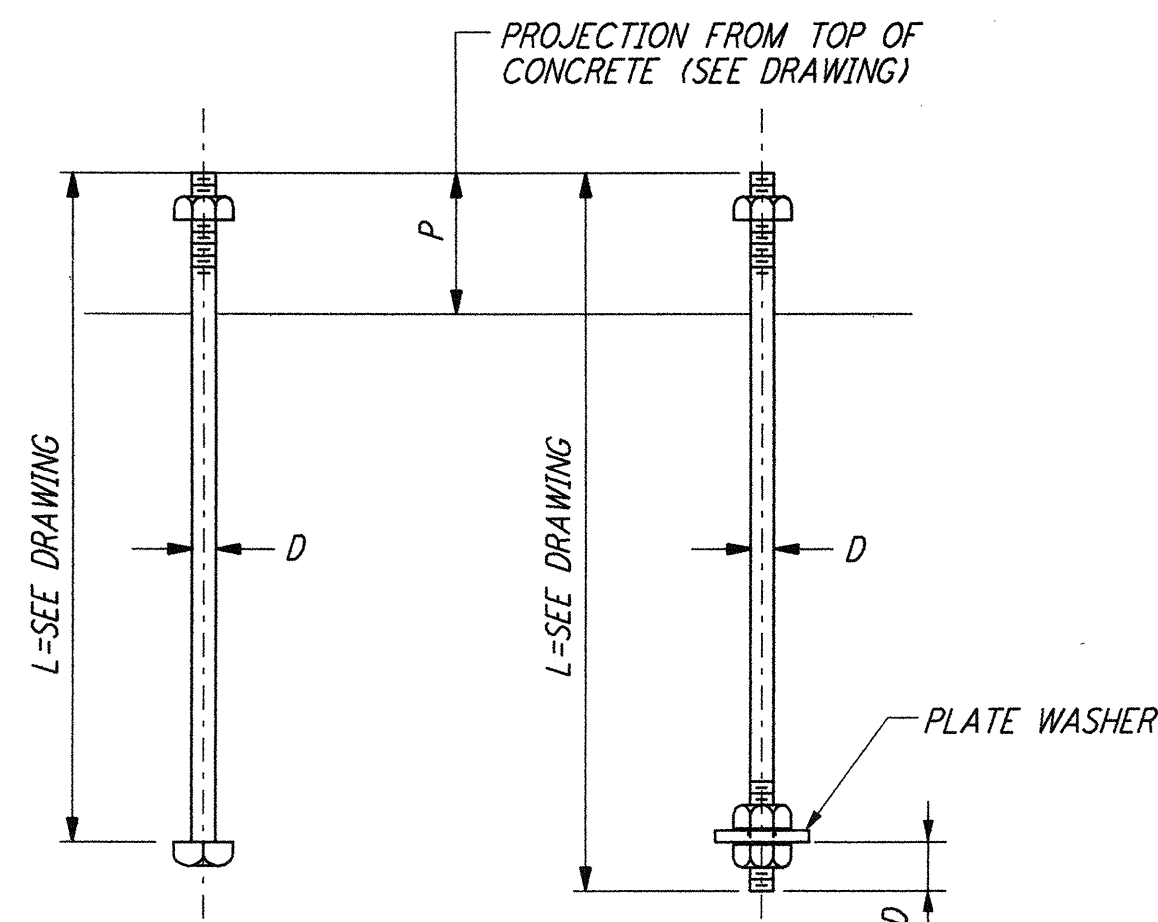


**NOTES:**

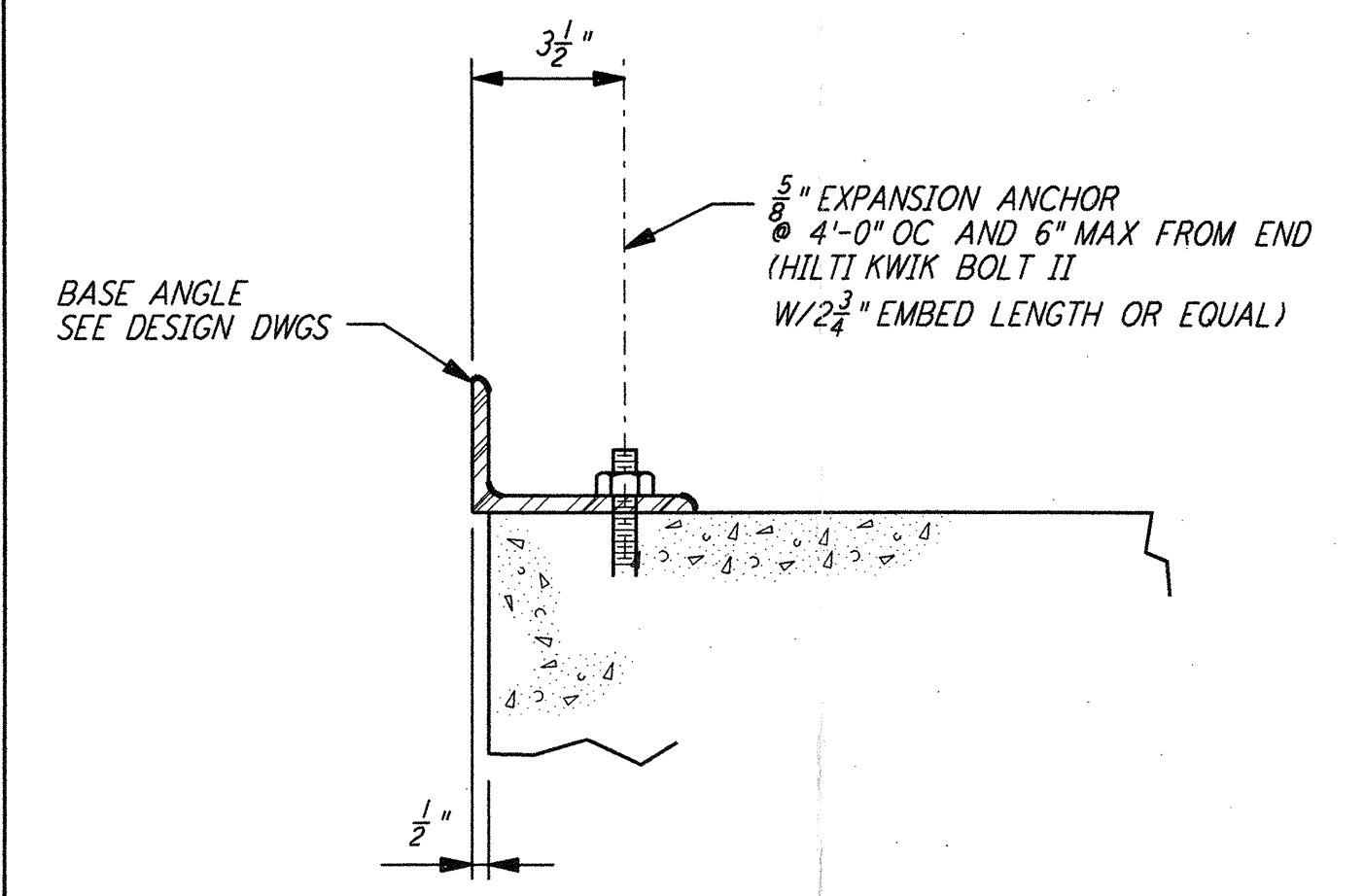
1. BOLT MATERIAL SHALL BE IN ACCORDANCE WITH ASTM A307, UNLESS OTHERWISE SPECIFIED.
2. USE UNIFIED NATIONAL COARSE THREAD, CLASS 2 FIT.
3. USE HEAVY DOUBLE CHAMFER HEX NUTS UP TO 1", AND HEAVY FLAT FACE HEX NUTS LARGER THAN 1".
4. PROVIDE 1 HEX NUT FOR EACH BOLT, UNLESS OTHERWISE NOTED ON DESIGN DRAWINGS.
5. PLATE WASHER MATERIAL SHALL BE ASTM A36, UNLESS OTHERWISE NOTED.
6. FABRICATOR SHALL BUNDLE AND TAG BOLTS BY INDIVIDUAL FOUNDATIONS OR MEMBERS. TAGS SHALL BE WEATHER RESISTANT, WITH MARKS AT LEAST 1/2" HIGH, AND FIRMLY WIRED TO BUNDLES.
7. SLEEVES SHALL NOT BE USED UNLESS SPECIFIED ON THE DESIGN DRAWINGS.

**ANCHOR BOLT SCHEDULE**

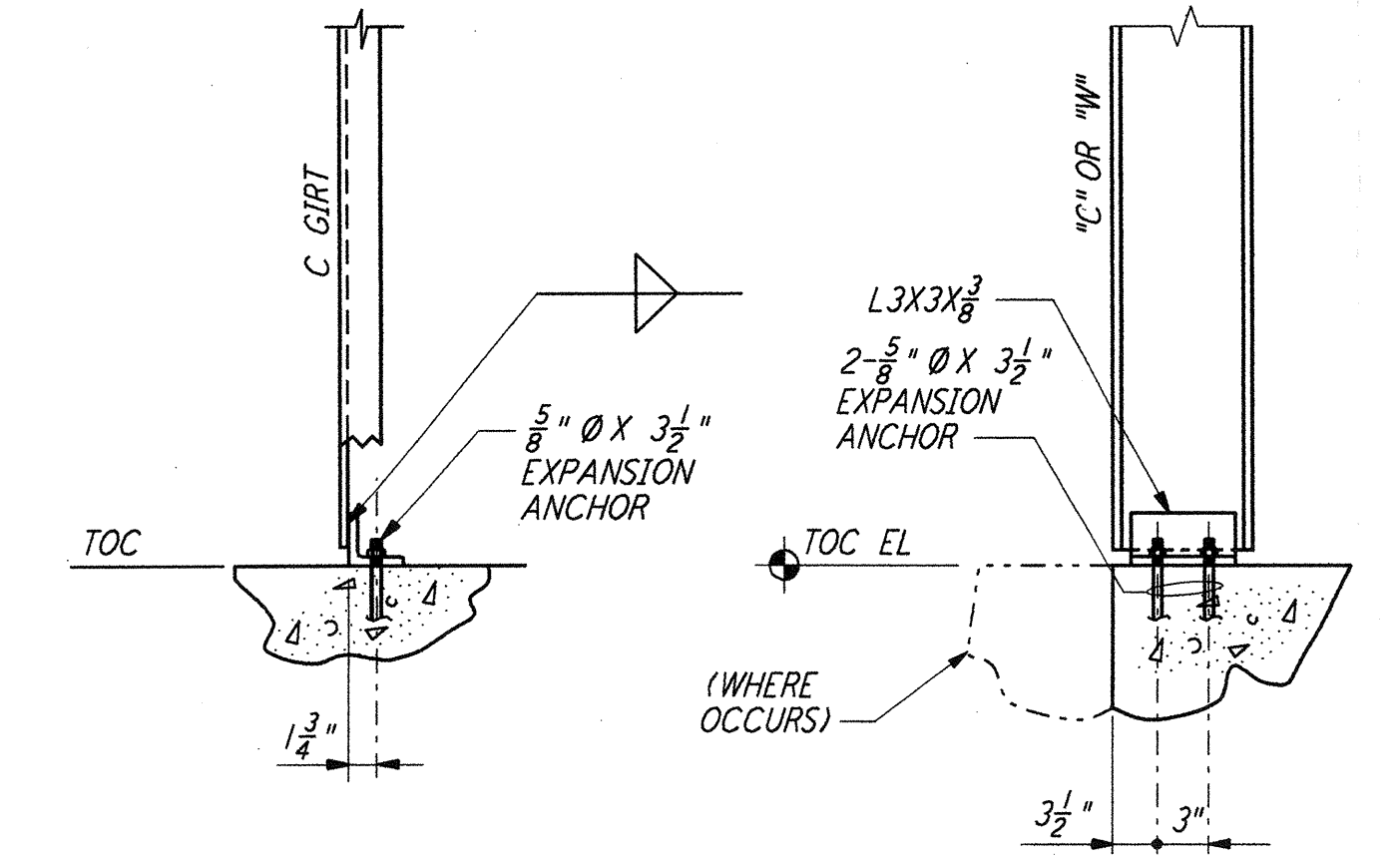
DIA D	PLATE WASHER	SLEEVE IF REQD		THREAD LENGTH	DIA D
		DIA	LENGTH		
1/2"		2"	5"	1 1/2"	1/2"
3/8"		2"	5"	2 1/2"	3/8"
3/4"		2"	7"	2 1/2"	3/4"
7/8"		2"	7"	2 3/8"	7/8"
1"	2 1/2" X 2 1/2" X 3/8"	3"	10"	3 1/2"	1"
1 1/8"	3" X 3" X 1/2"	3"	10"	3 3/8"	1 1/8"
1 1/4"	3 1/2" X 3 1/2" X 1/2"	3"	10"	4"	1 1/4"
1 3/8"	3 1/2" X 3 1/2" X 1/2"	4"	15"	4 3/8"	1 3/8"
1 1/2"	3 3/4" X 3 3/4" X 3/8"	4"	15"	4 1/2"	1 1/2"



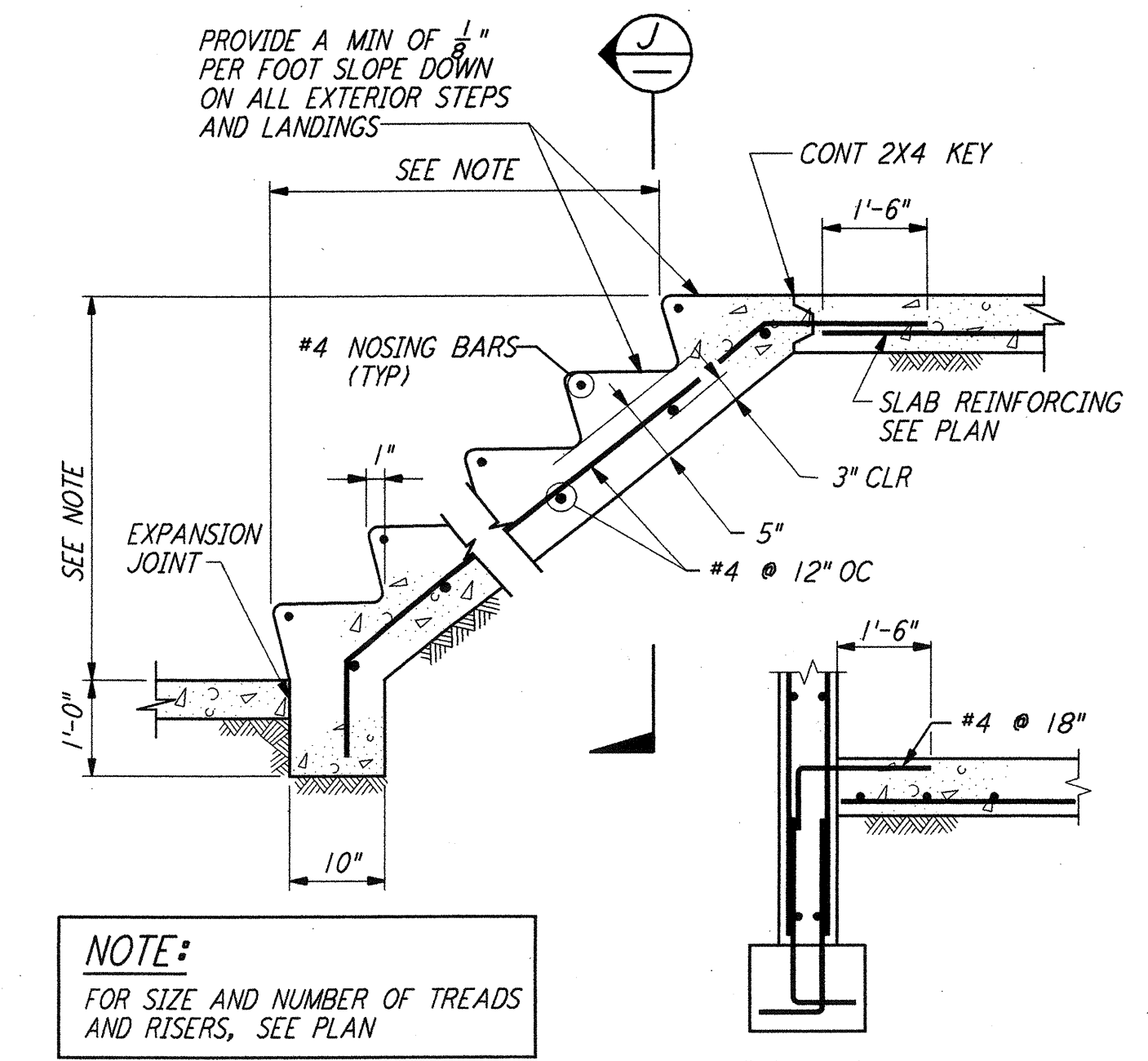
**TYPE 1**  
**TYPE 2**  
**ANCHOR BOLTS DETAILS** (1)



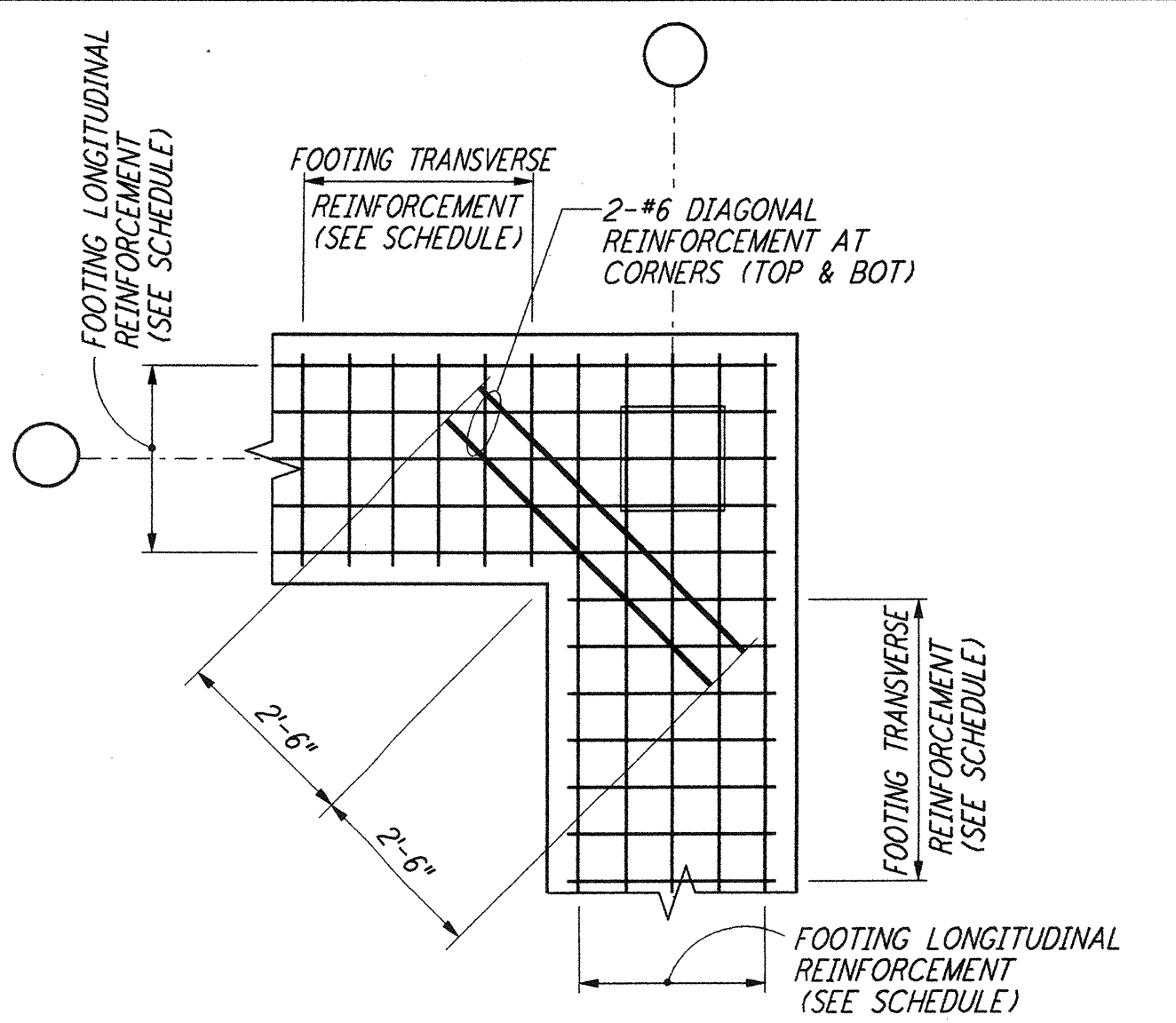
**BASE ANGLE CONNECTION**  
**SECTION** (A)



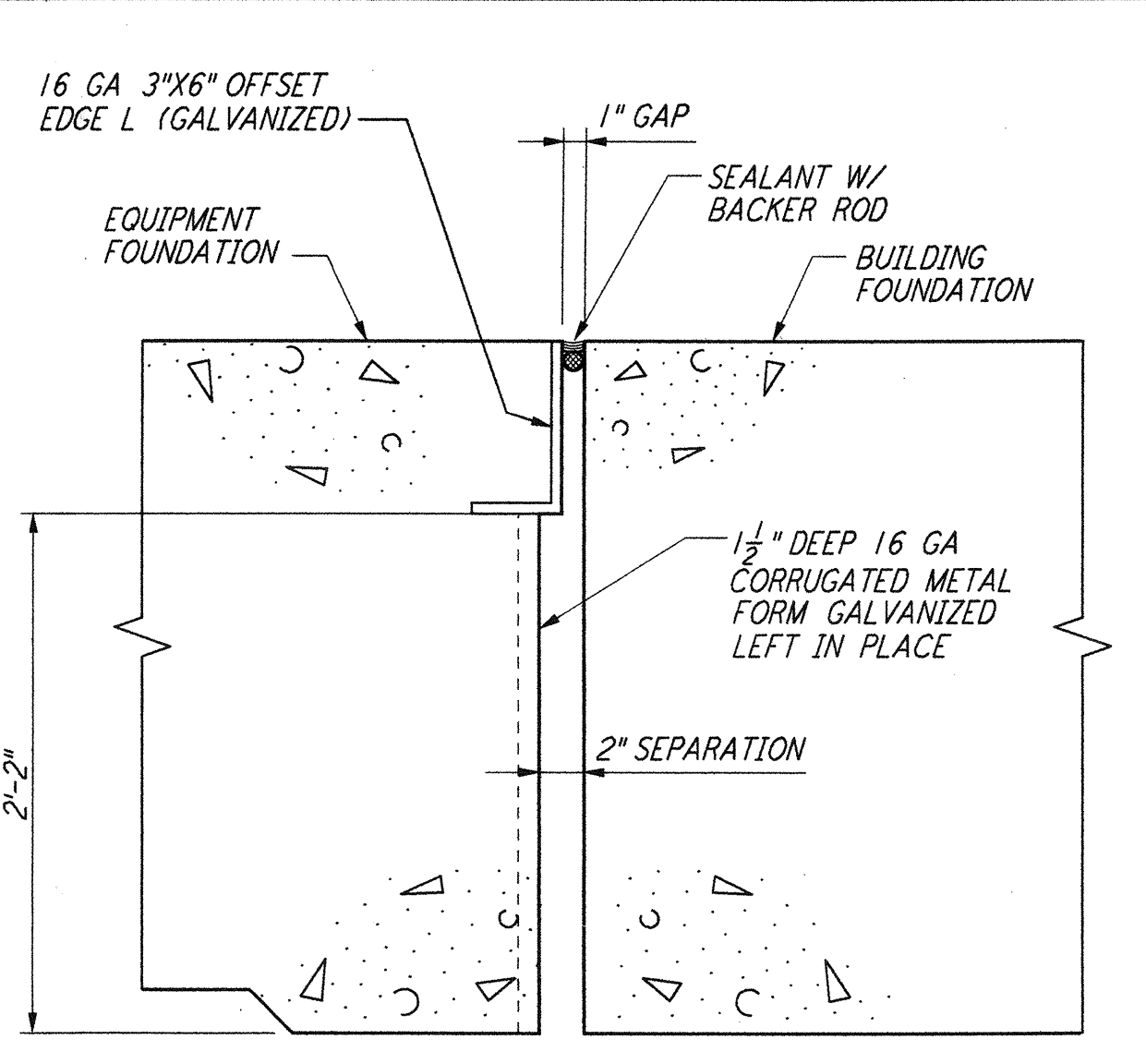
**FRONT VIEW**  
**SIDE VIEW**  
**DETAIL** (2)



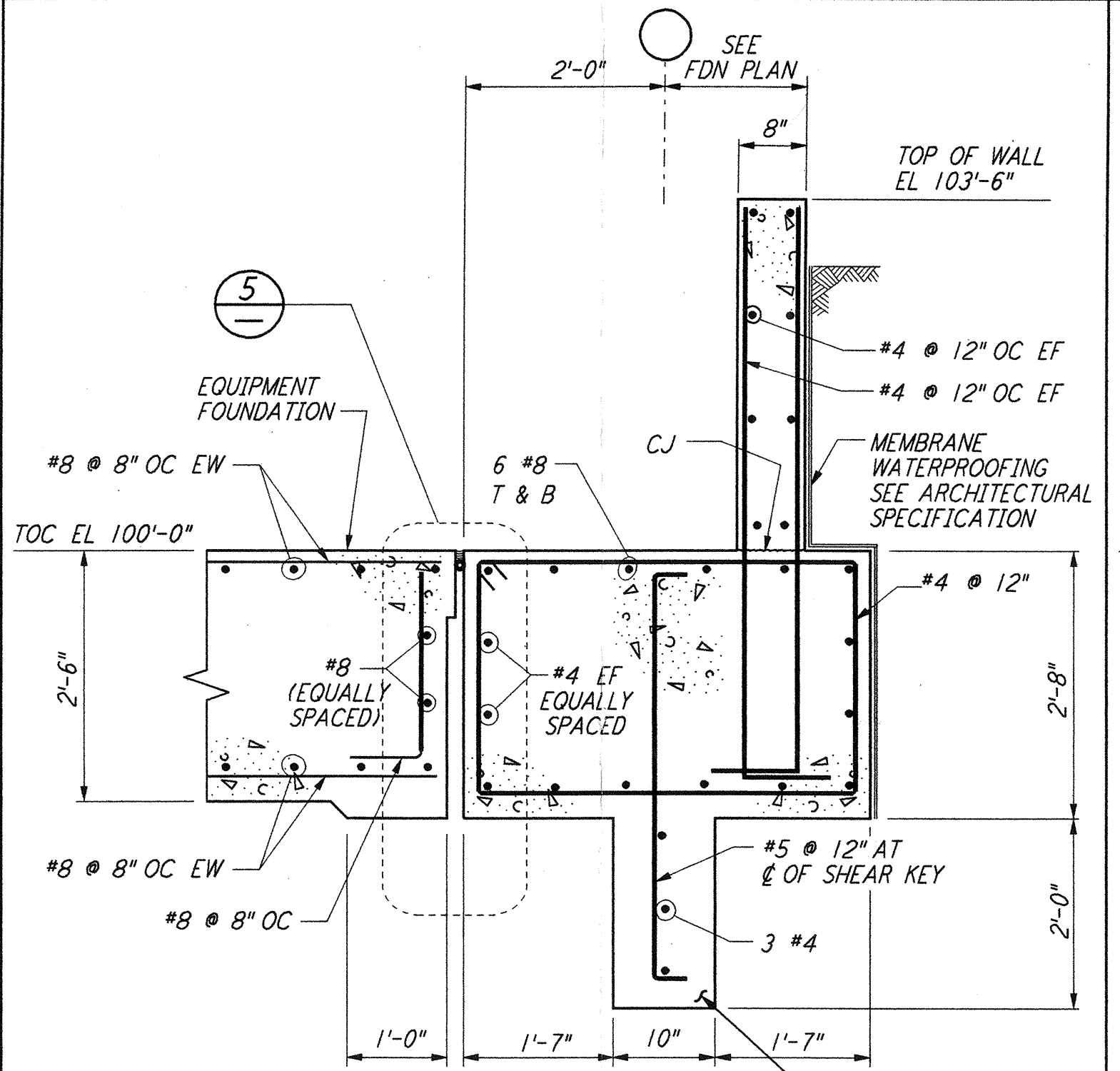
**CONCRETE STAIRS ON GRADE** (3)



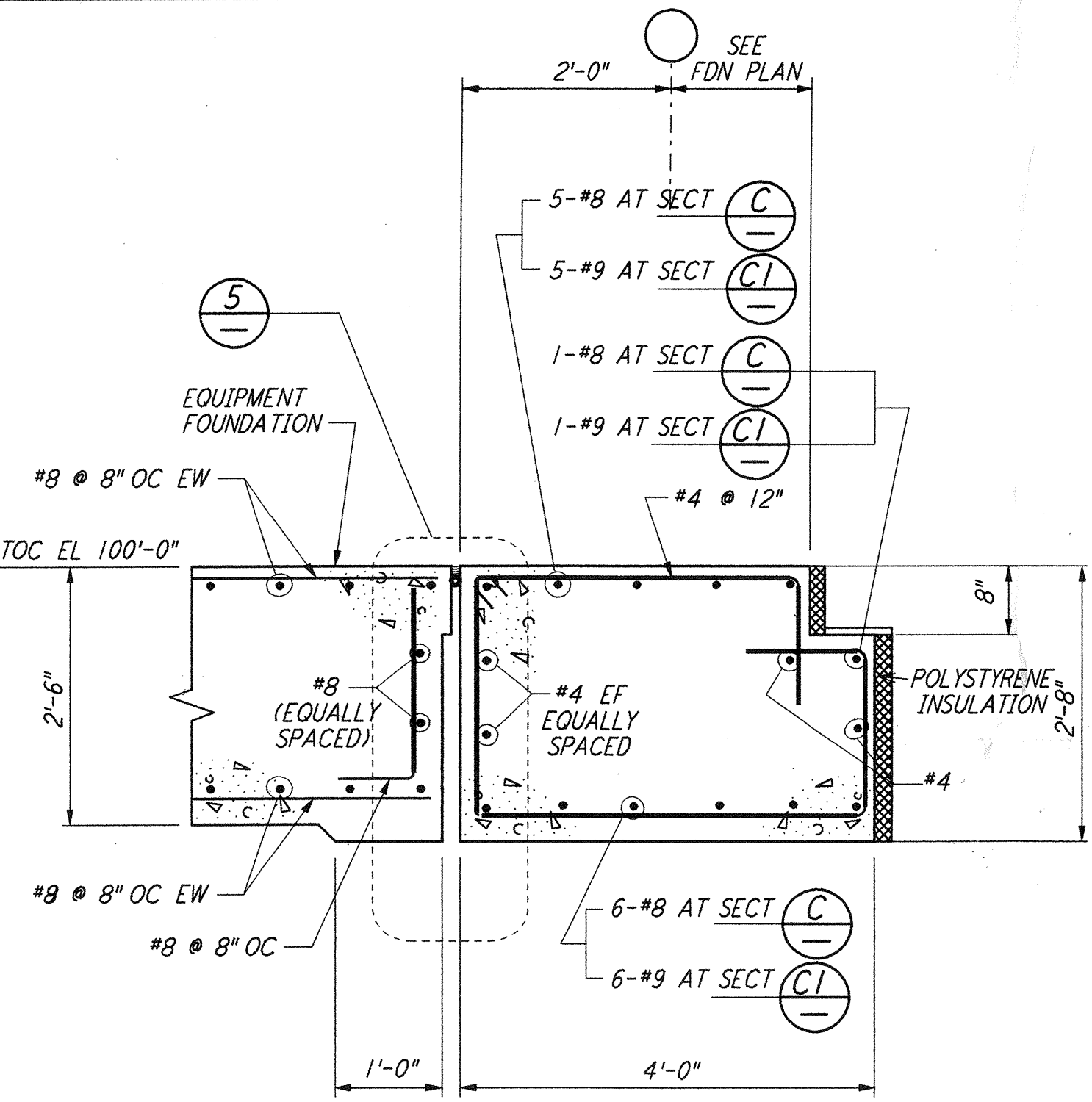
**FOOTING DIAGONAL REINFORCEMENT AT CORNERS**  
**DETAIL** (4)



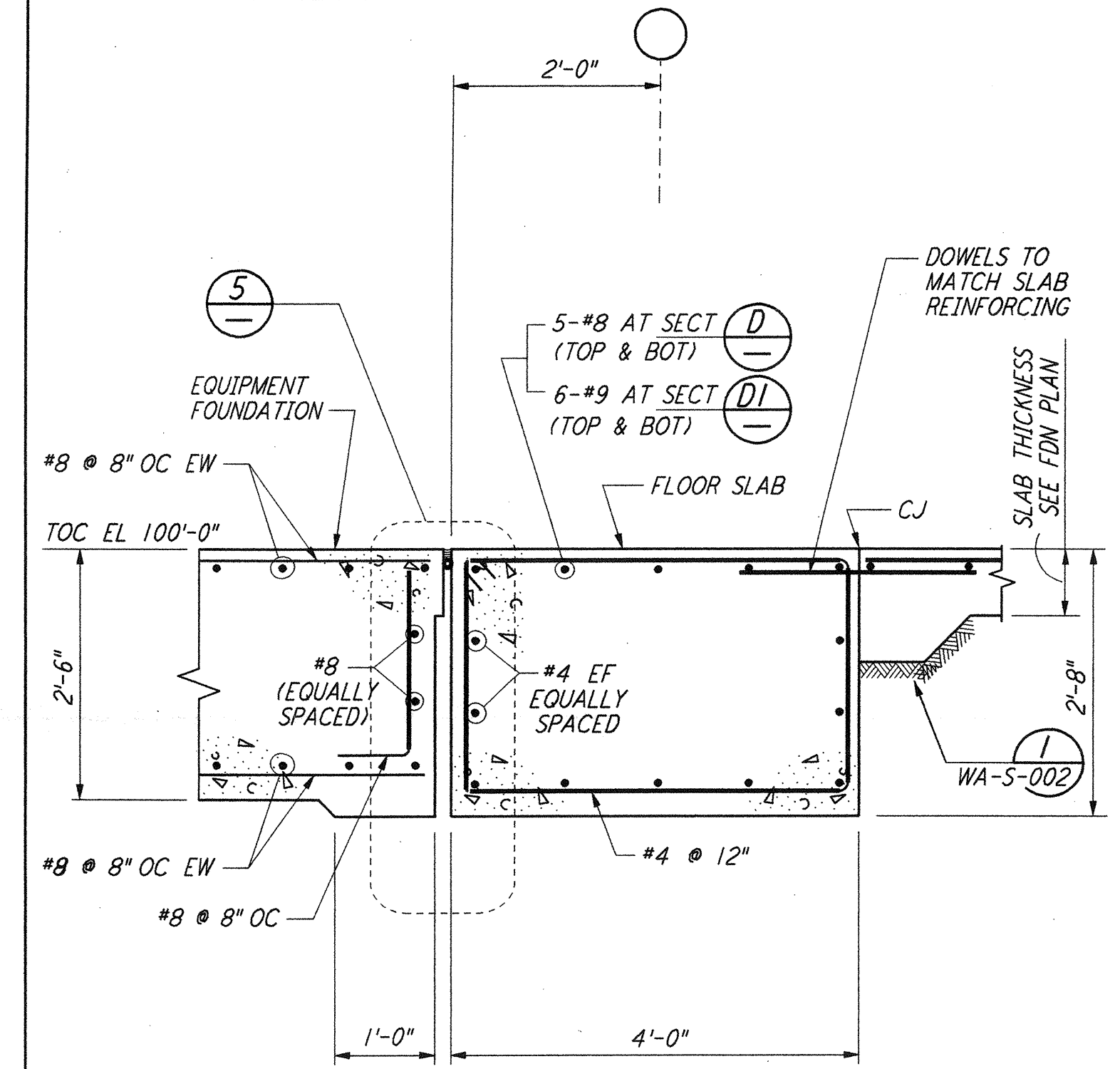
**EQUIPT FDN & BLDG FDN INTERFACE**  
**DETAIL** (5)



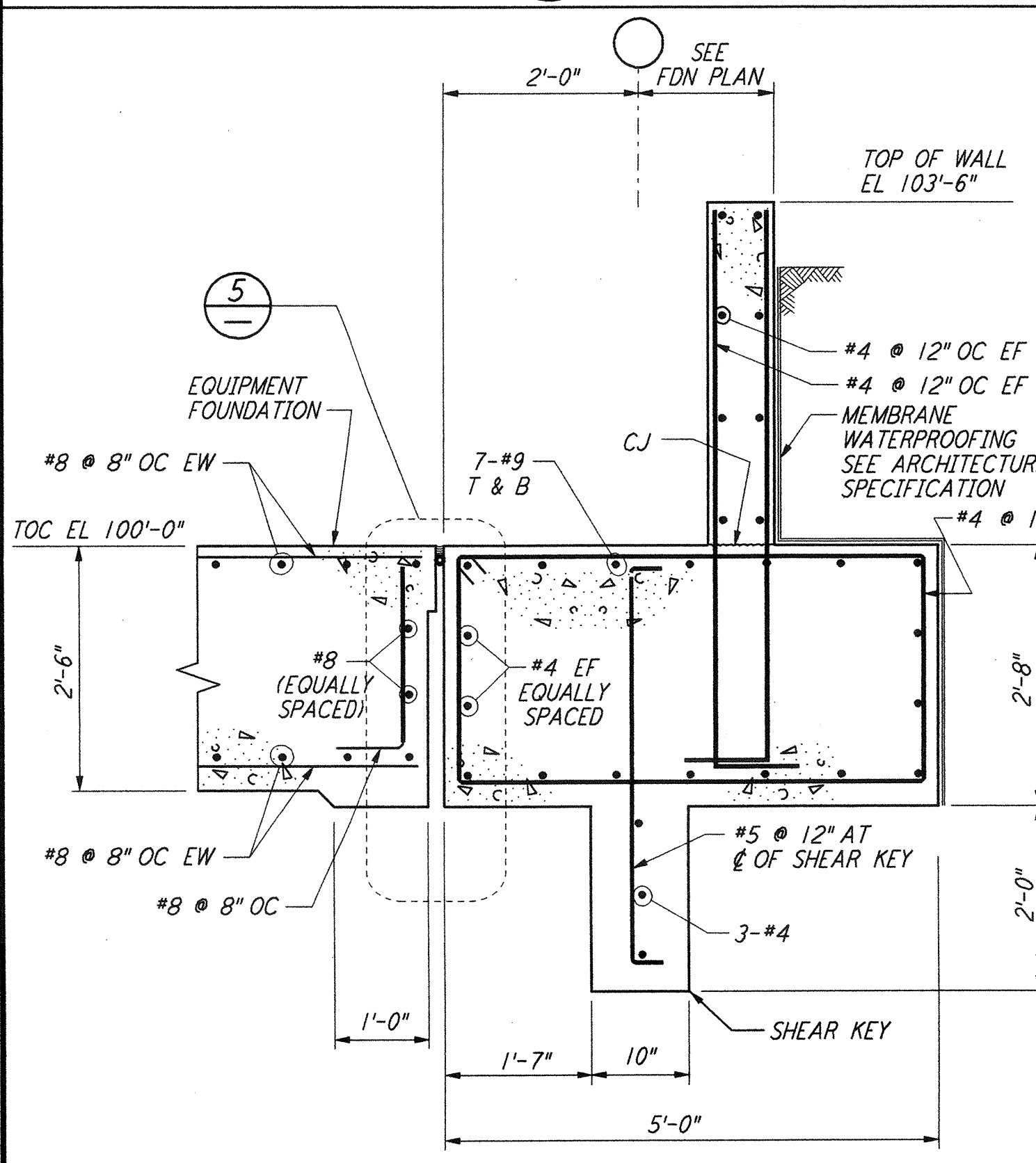
**SECTION** (B) (B1)



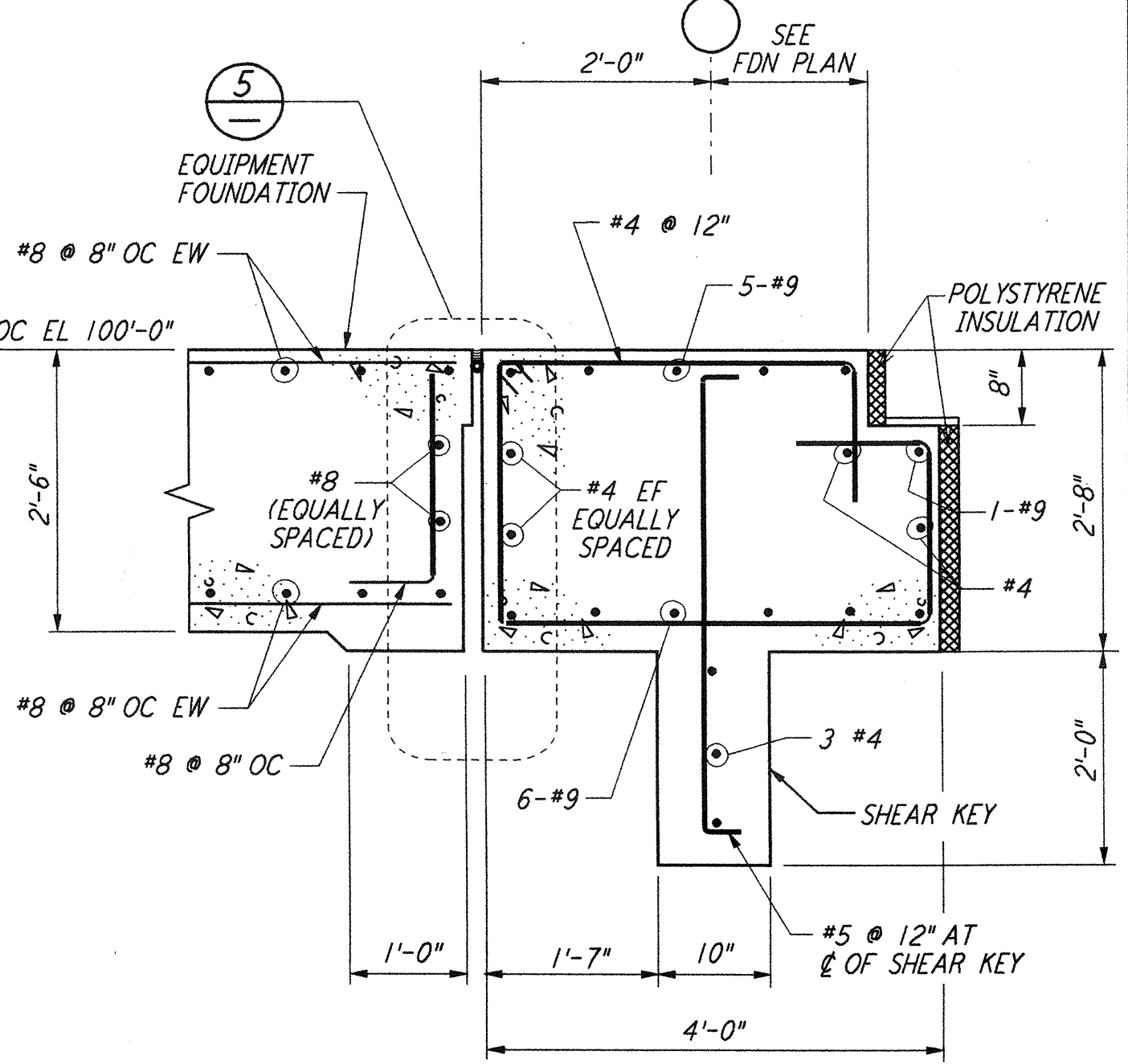
**SECTION** (C) (C1)



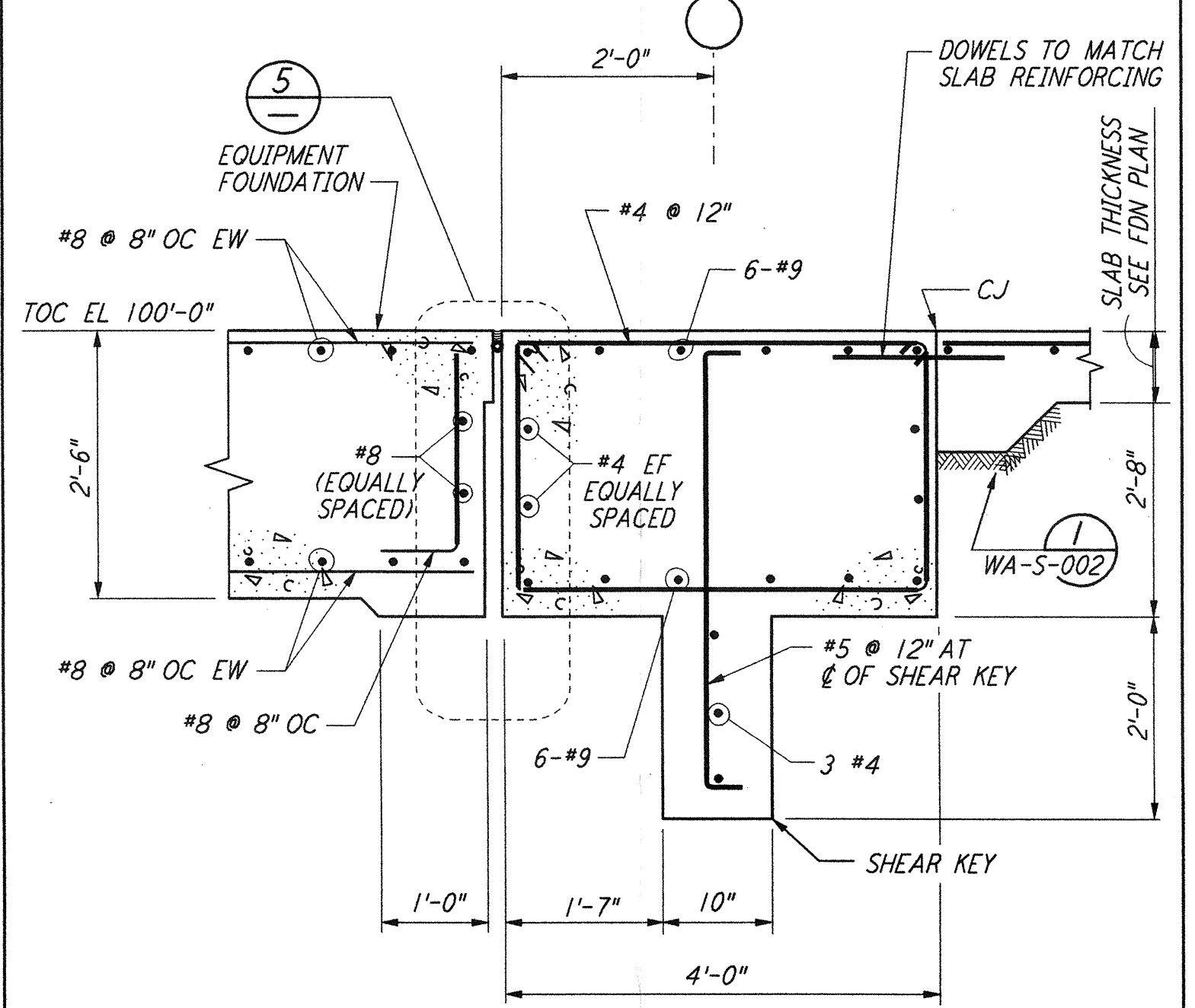
**SECTION** (D) (D1)



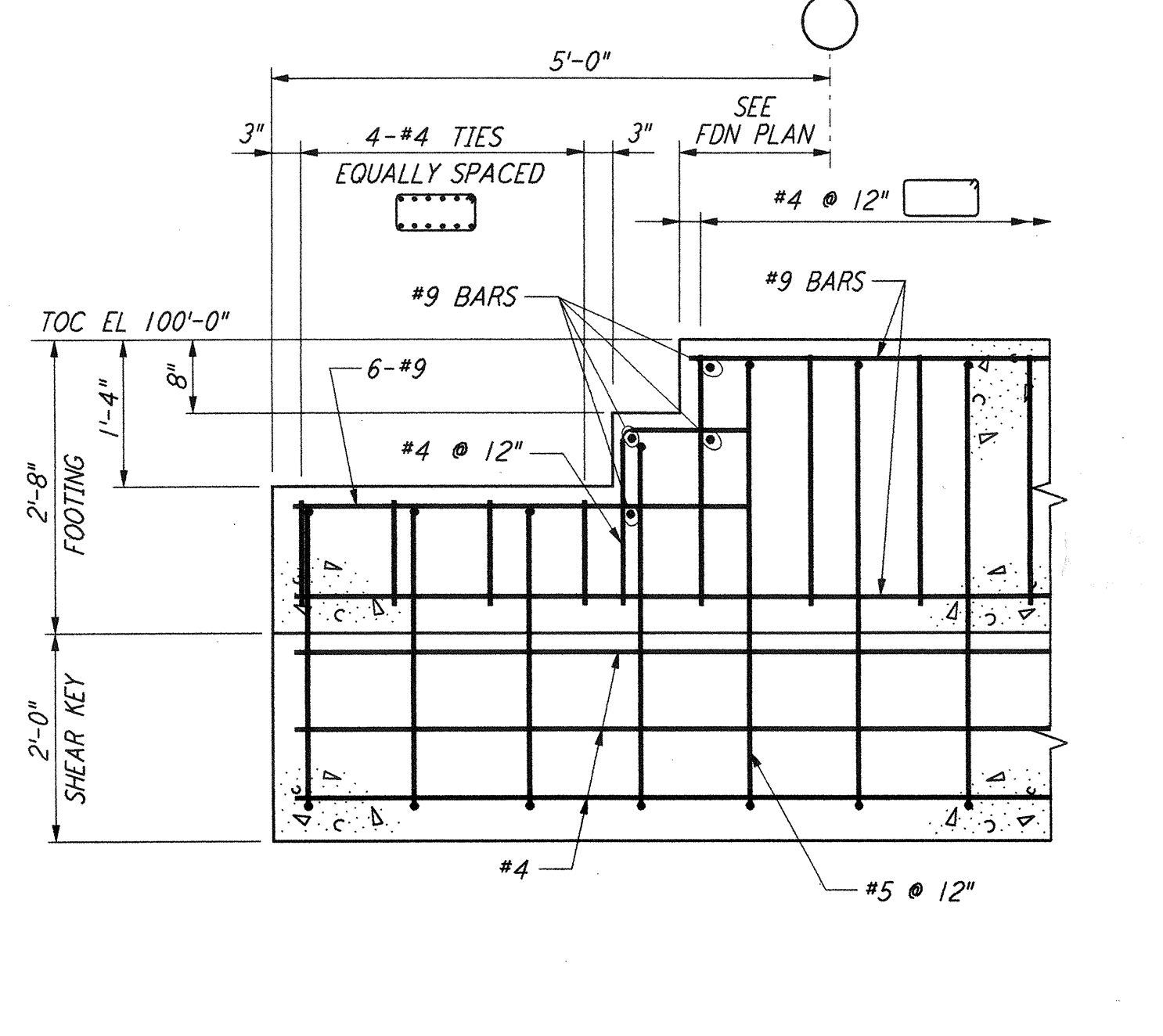
**SECTION** (E)



**SECTION** (F)



**SECTION** (G)



**SECTION** (H)

- NOTES:**
1. FOR GENERAL NOTES, ABBREVIATIONS AND SYMBOLS, SEE DRAWING S-001

**LIGO-D960288-01-0**

NO.	DATE	BY	CHKD	ENGR	PROJ	DESCRIPTION
1	6-15-98	CKT	BP	MDW	MDW	ISSUED FOR AS-BUILT

ISSUED FOR CONSTRUCTION  
 DRAWN MCS 6-24-96  
 CHECKED DDM 7-2-96  
 ENGINEER BP 6-28-96  
 PROJ MDW 7-9-96

**AS-BUILT DRAWINGS**

**PARSONS**  
 100 WEST WALNUT STREET  
 PASADENA, CALIFORNIA

**LIGO**  
 CALIFORNIA INSTITUTE OF TECHNOLOGY  
 MASSACHUSETTS INSTITUTE OF TECHNOLOGY

LASER INTERFEROMETER GRAVITATIONAL-WAVE OBSERVATORY SITE NO. 1 - HANFORD, WASHINGTON		
TITLE	SCALE	CONTRACT NUMBER
STRUCTURAL STANDARD CONCRETE DETAILS SHEET 2	NONE	PP150969
	SHEET NUMBER	PROJECT NUMBER
	894	8094
	REVISIONS	
	<b>WA-S-003</b>	

This document and the design it covers are the property of PARSONS. They are loaned only with the borrower's expressed written agreement that they will not be reproduced, copied, loaned, exhibited, or used in any other way, except by written consent from PARSONS to the borrower.

I:\LIGOWAF\153\3962.DWG 52885 K:\VBEZ\15003.dwg  
 Mon Jul 06 15:56:29 1998 C:\PLOT\PLT\153\3962.DWG