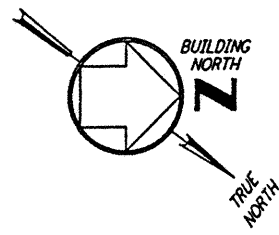


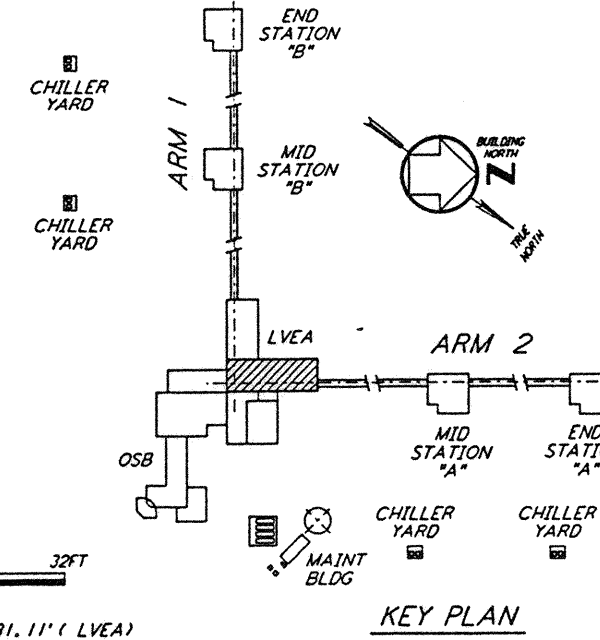
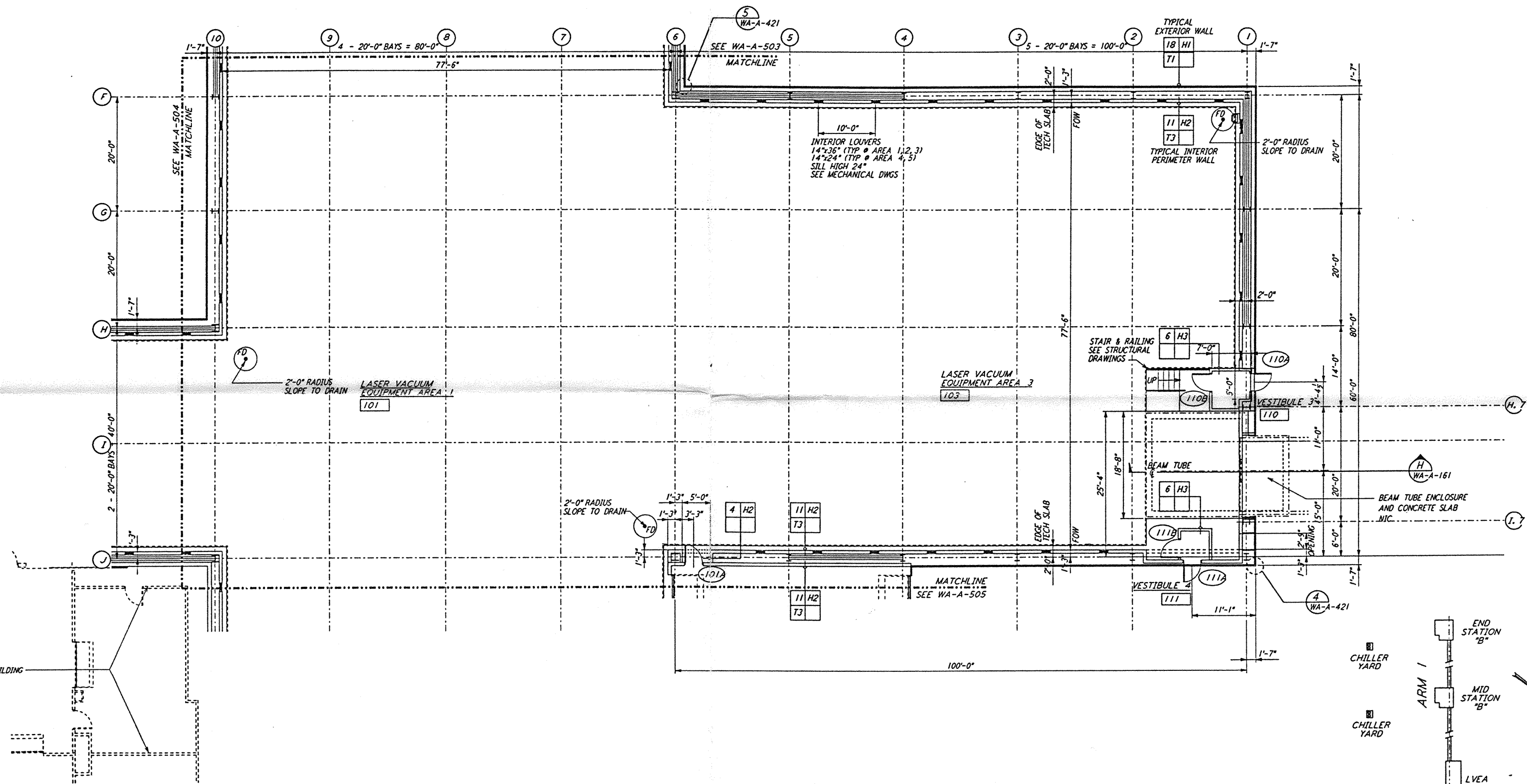
NOTE: SEE SPECIFICATIONS FOR ADDITIONAL INFORMATION AND SCHEDULES



not be reproduced, copied, loaned, exhibited, or used in any other way, except by written consent from PARSONS to the borrower.

This document and the design it covers are the property of PARSONS. They are loaned only with the borrower's expressed written agreement that they will

LINE OF OPERATIONAL SUPPORT BUILDING
 SEE SHEET WA-A-109



0 8 16 24 32 FT
 1" = 1'-0"
 DATUM POINT EL +100.00 = 531.11' (LVEA)
 DATUM POINT EL +100.00 = 531.11' (OSB)

NO.	DATE	BY	CHKD	ENGR	PROJ	DESCRIPTION
A	4-19-96	SF	SF	SP	SP	FINAL DESIGN REVIEW & BID

DRAWN	CK7/OS
CHECKED	
ENGINEER	
PROJ	

PARSONS
 100 WEST WALNUT STREET
 PASADENA, CALIFORNIA

LIGO
 CALIFORNIA INSTITUTE OF TECHNOLOGY
 MASSACHUSETTS INSTITUTE OF TECHNOLOGY

LASER INTERFEROMETER
 GRAVITATIONAL-WAVE OBSERVATORY
 SITE NO. 1 - HANFORD, WASHINGTON

ARCHITECTURAL
 CORNER STATION
 LVEA PARTIAL FLOOR PLAN
 SHEET 1

AS NOTED PP150969 8094
WA-A-502

LIGO-D960274-A-D

LIGOWAF3.BOR