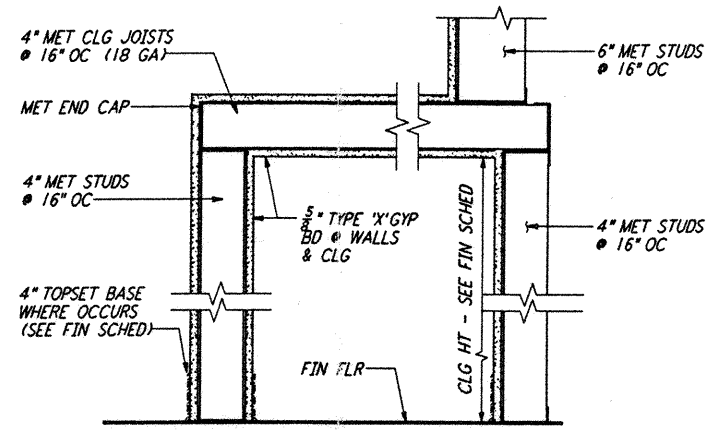
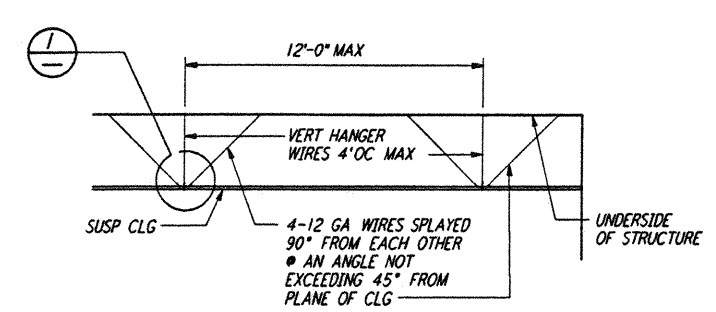


TOILET PARTITION MOUNTING
 1 1/2\"/>

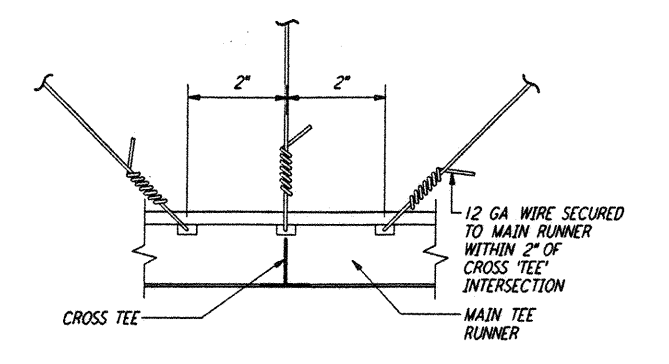
SECTION A
 1 1/2\"/>



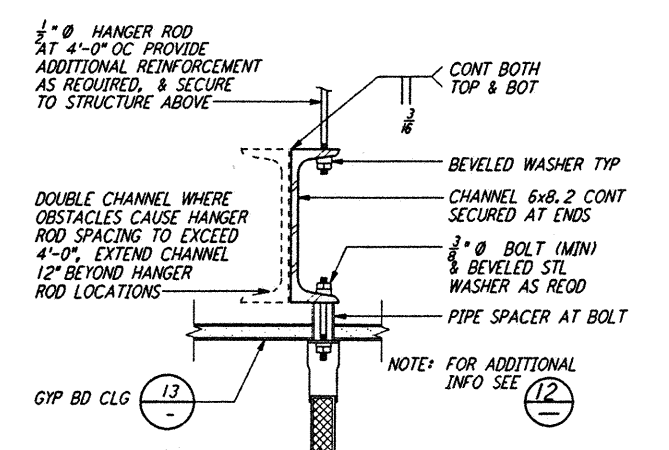
LVEA VESTIBULE
 1 1/2\"/>



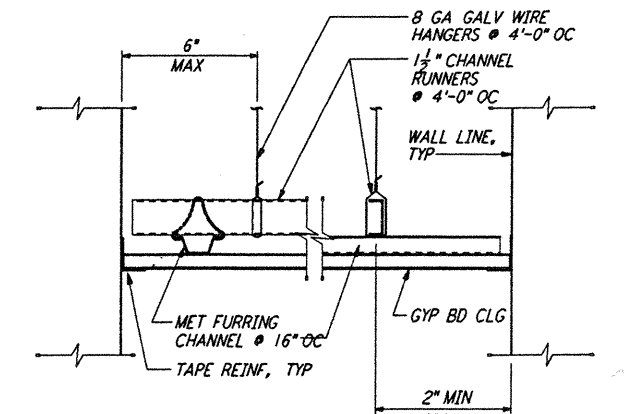
SECTION
 1/2\"/>



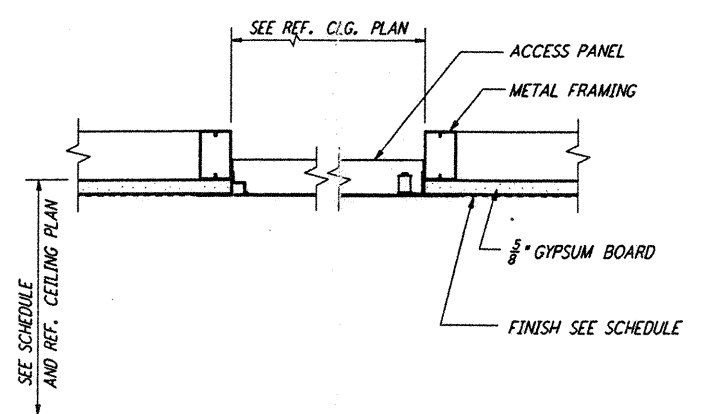
SUSP ACOUSTICAL CLG DET
 3\"/>



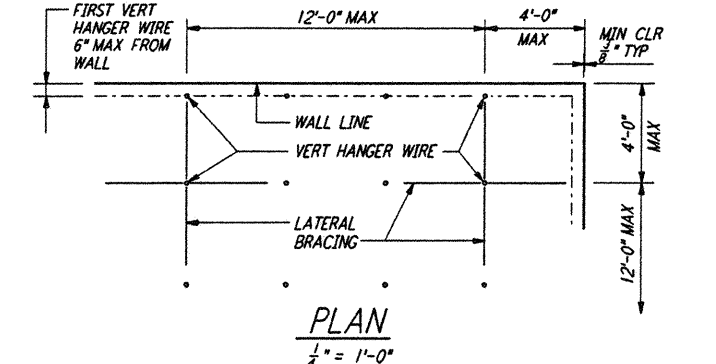
TOILET PARTITION MOUNTING
 3\"/>



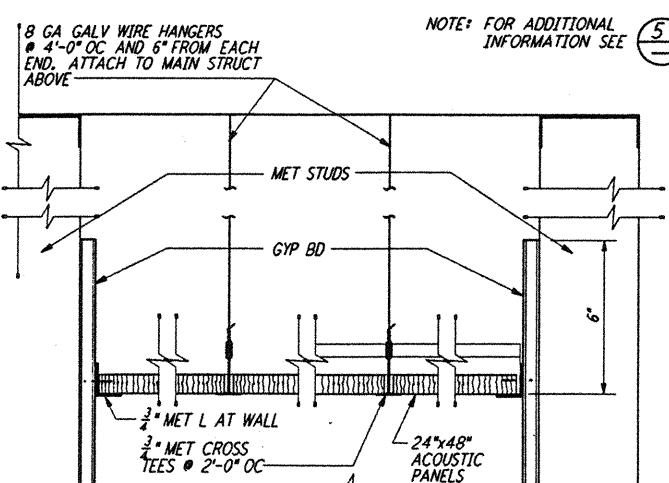
GYPSUM BOARD CEILING
 3\"/>



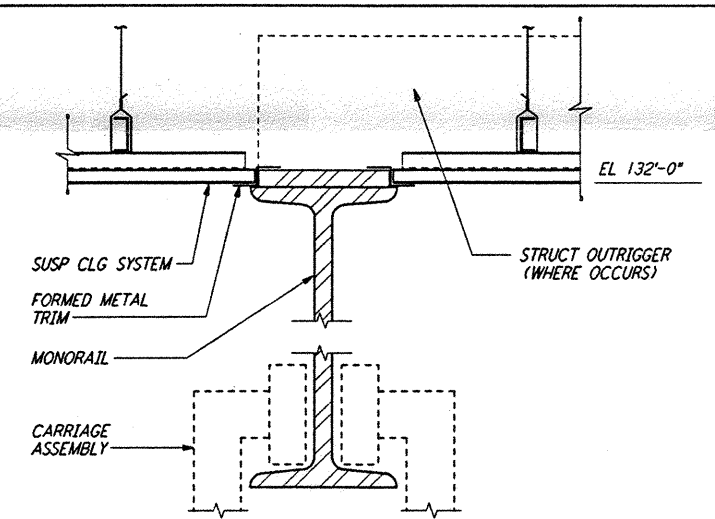
CEILING ACCESS PANEL DET
 1/2\"/>



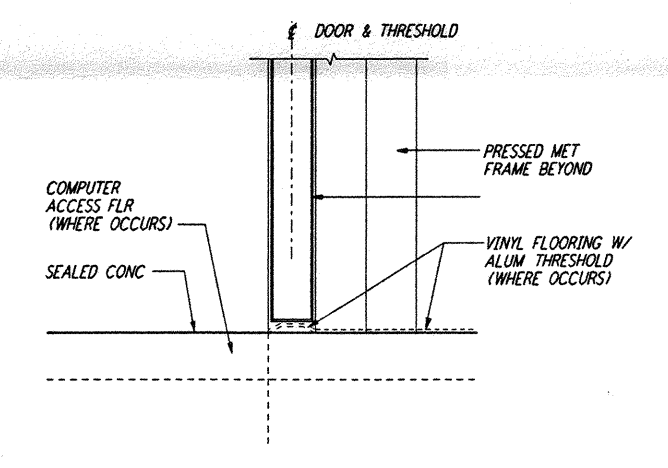
PLAN
 1/2\"/>



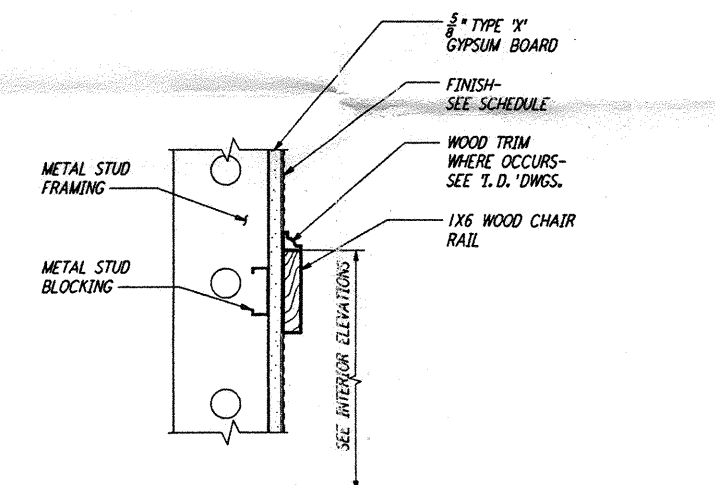
SUSP ACOUSTICAL CLG DET
 3\"/>



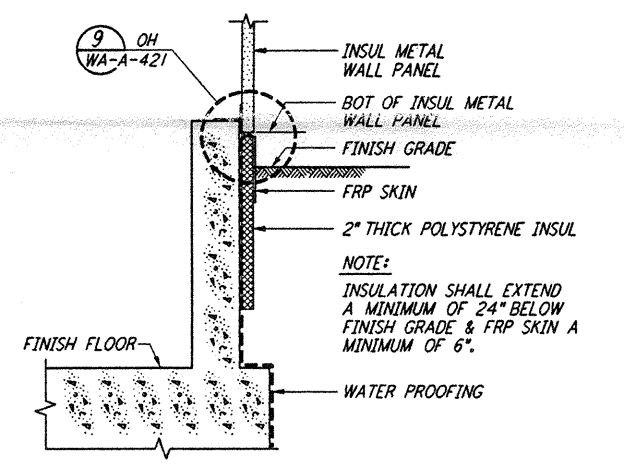
SUSP CLG AT MONORAIL
 3\"/>



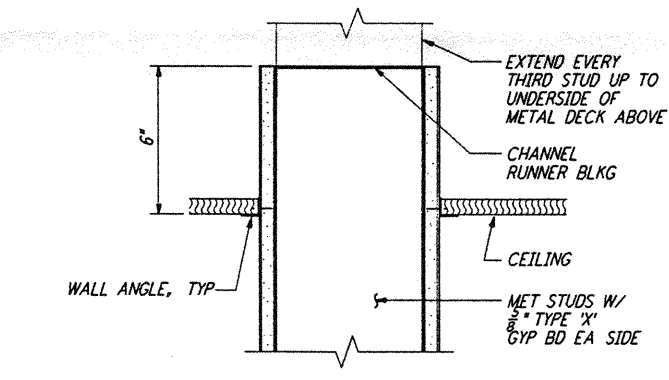
INT THRESHOLD DETAIL
 3\"/>



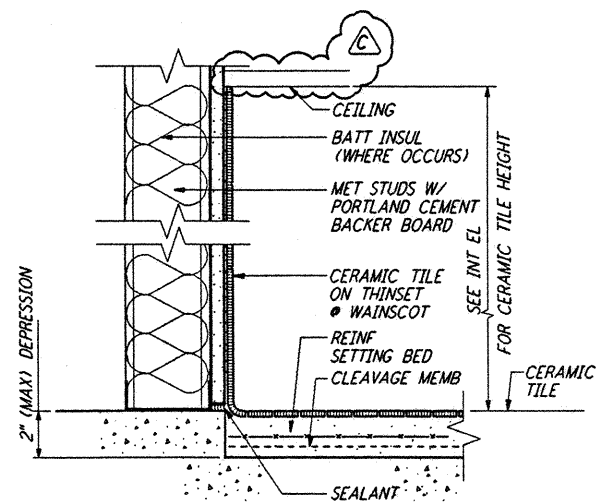
CHAIR RAIL
 3\"/>



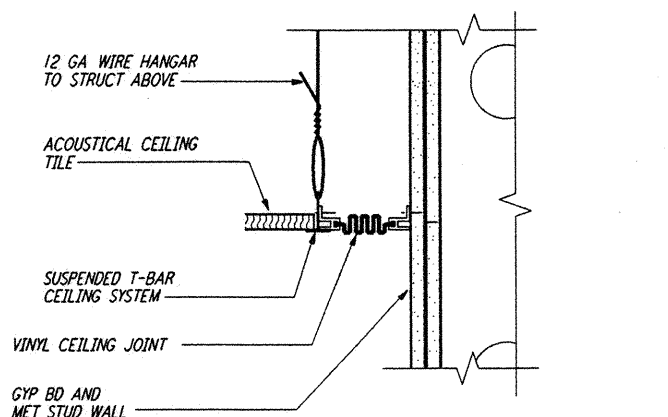
PERIMETER INSUL FOR FDN
 1/2\"/>



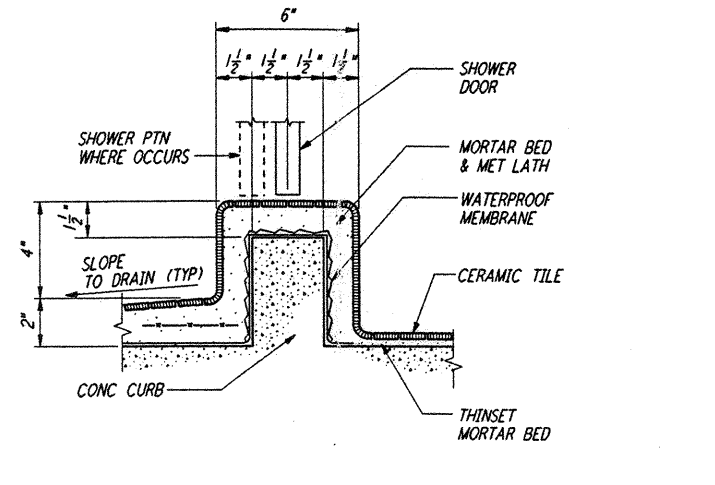
SUSP CLG @ PARTITION DET
 3\"/>



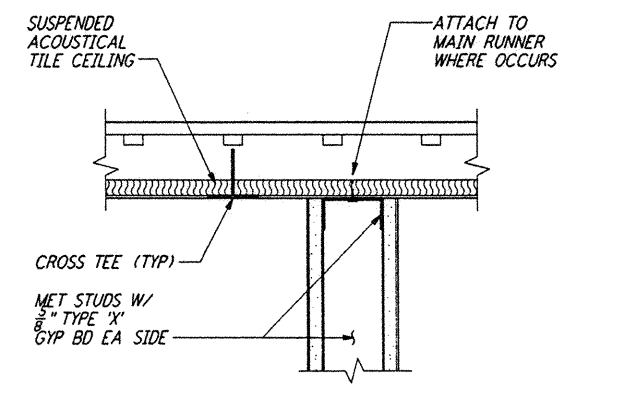
WAINSCOT DETAIL
 3\"/>



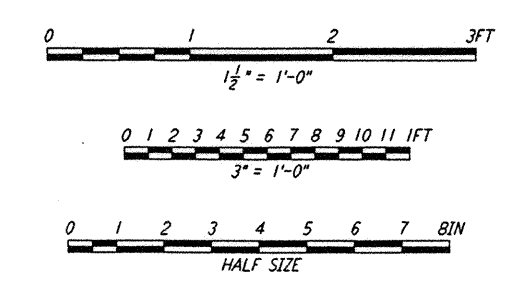
INT CEILING EXPANSION JT
 3\"/>



SHOWER CURB DETAIL
 3\"/>



STUD WALL TO CLG DETAIL
 1\"/>



This document and the design it covers are the property of PARSONS. They are loaned only with the borrower's expressed written agreement that they will not be reproduced, copied, loaned, exhibited, or used in any other way, except by written consent from PARSONS.

This document and the design it covers are the property of PARSONS. They are loaned only with the borrower's expressed written agreement that they will not be reproduced, copied, loaned, exhibited, or used in any other way, except by written consent from PARSONS.

NO.	DATE	BY	CHKD	ENGR	PROJ	DESCRIPTION
C	5-22-96	BK	BK	SF	TDM	BID ADDENDUM #2
B	4-19-96	SF	SF	TDM		FINAL DESIGN REVIEW & BID
A	01/17/96	SF	SF	TDM		PRELIMINARY DESIGN REVIEW

DRAWN	SH/RR
CHECKED	
ENGINEER	
PROJ	

PARSONS
 100 WEST WALNUT STREET
 PASADENA, CALIFORNIA

LIGO
 CALIFORNIA INSTITUTE OF TECHNOLOGY
 MASSACHUSETTS INSTITUTE OF TECHNOLOGY

LASER INTERFEROMETER
 GRAVITATIONAL-WAVE OBSERVATORY
 SITE NO. 1 - HANFORD, WASHINGTON

ARCHITECTURAL
 CEILING & MISCELLANEOUS
 INTERIOR DETAILS

AS NOTED
 SHEET NUMBER
WA-A-424

PROJECT NUMBER
 8094

REVISION