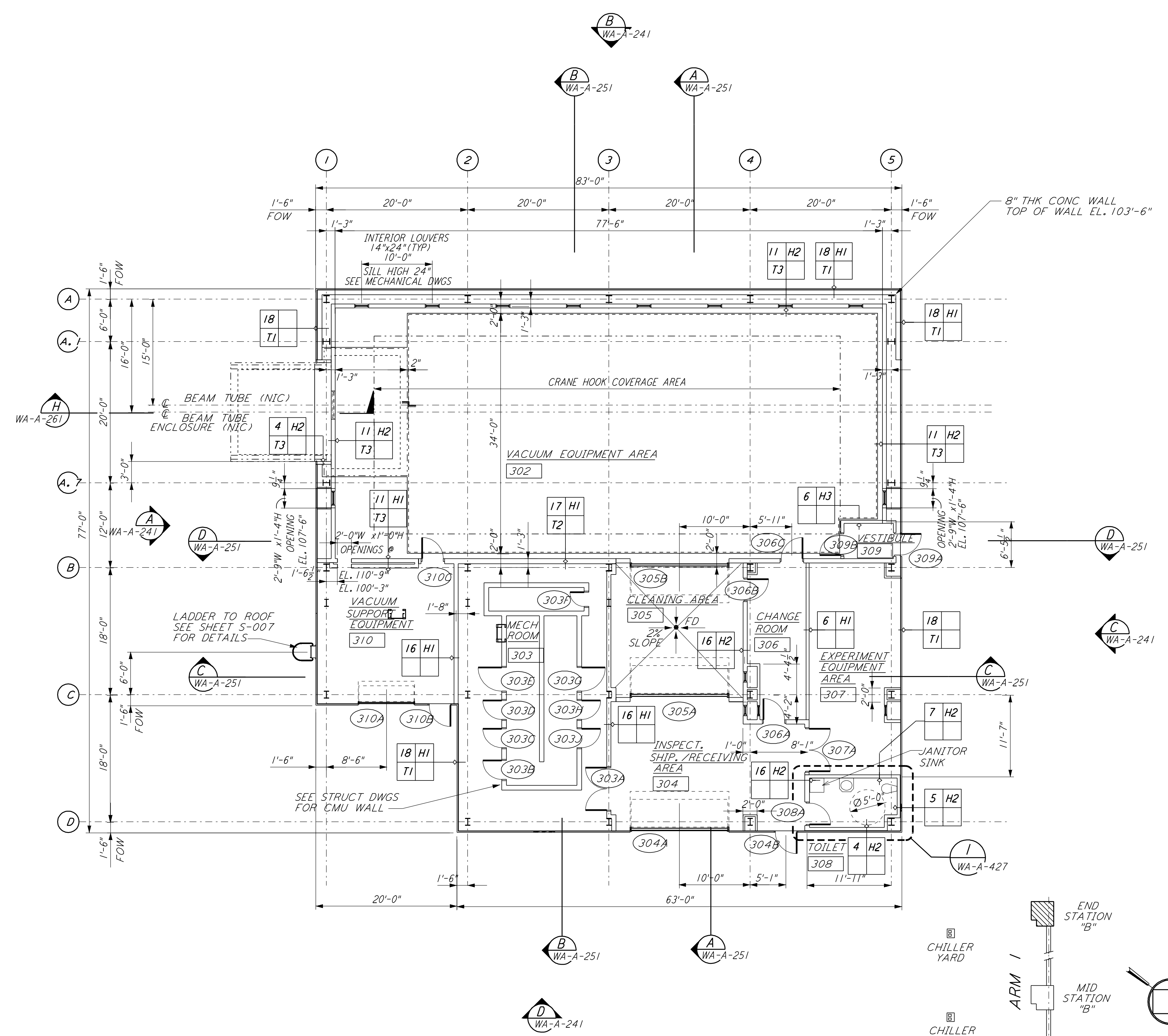
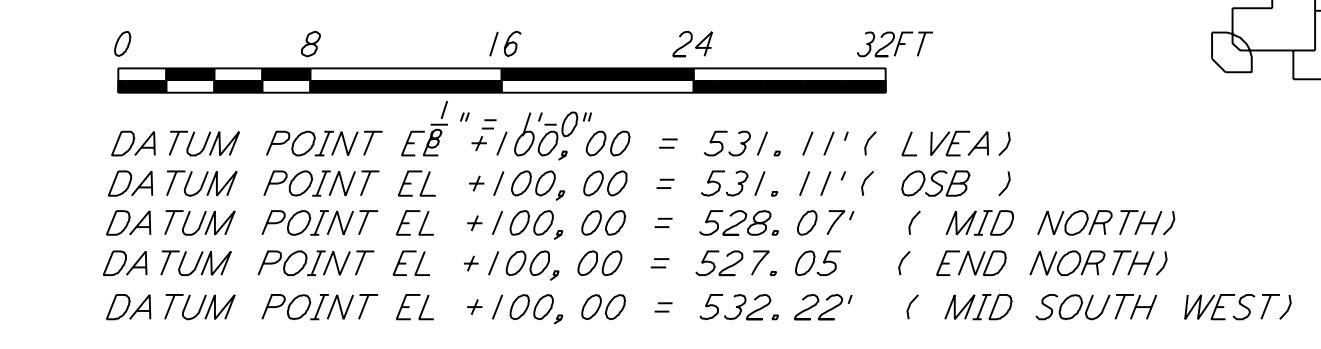


END STATION "B" FLOOR PLAN
 1/8"=1'-0"
 FOR LOUVER AND OPENING LOCATIONS
 SEE MID STATION "A" FLOOR PLAN



END STATION "A" FLOOR PLAN
 1/8"=1'-0"
 FOR LOUVER AND OPENING LOCATIONS
 SEE MID STATION "A" FLOOR PLAN



KEY PLAN

This document and the design it covers are the property of PARSONS. They are loaned only with the borrower's expressed written agreement that they will not be reproduced, copied, loaned, exhibited, or used in any other way, except by written consent from PARSONS to the borrower.

NO.	DATE	BY	CHKD	ENGR	PROJ	DESCRIPTION
2	5-15-98	CKT				ISSUED FOR AS-BUILT
1	2-28-97	CKT	TB	AK	TDM	MID & END STATION PARTITION

ISSUED FOR CONSTRUCTION		
DRAWN	CKT	5-12-96
CHECKED	TB	5-26-96
ENGINEER	bkk	7-12-96
PROJ	MDW	7-12-96

AS-BUILT DRAWINGS

PARSONS
 100 WEST WALNUT STREET
 PASADENA, CALIFORNIA

LIGO
 CALIFORNIA INSTITUTE OF TECHNOLOGY
 MASSACHUSETTS INSTITUTE OF TECHNOLOGY

LASER INTERFEROMETER
 GRAVITATIONAL-WAVE OBSERVATORY
 SITE NO. 1 - HANFORD, WASHINGTON

ARCHITECTURAL
 END STATIONS
 FLOOR PLANS

SCALE: AS NOTED
 CONTRACT NUMBER: PP150969
 PROJECT NUMBER: 8094

WA-A-202

Note 1, Linda L Turner, 04/14/99 08:49:16 AM
LIGO-D960260-02-O