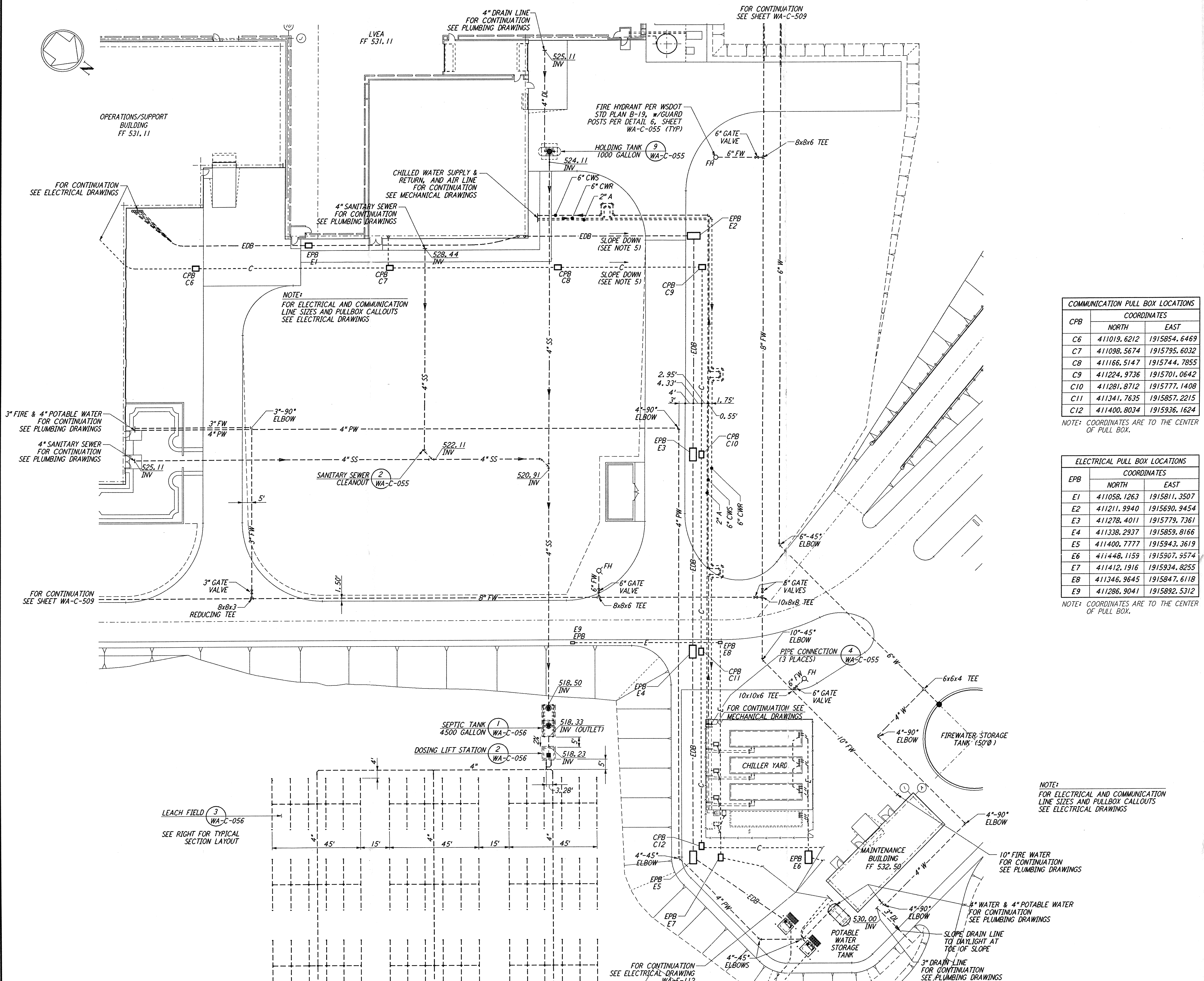


This document and the design it covers are the property of PARSONS. They are loaned only with the borrower's expressed written agreement that they will not be reproduced, copied, loaned, exhibited, or used in any other way, except by written consent from PARSONS to the borrower.



ENLARGED PLAN  
 SCALE: 1" = 20'

- NOTES:**
- SEE SHEET WA-C-002 FOR GENERAL NOTES, LEGEND AND ABBREVIATIONS.
  - ALL DIMENSIONS SHOWN FOR COMMUNICATION AND ELECTRICAL PULLBOXES ARE INTERNAL DIMENSIONS, UNLESS NOTED OTHERWISE.
  - COMMUNICATIONS CONDUIT SHALL STUB-UP INSIDE THE ACCESS FLOOR CAVITY TO AN ELEVATION THAT WILL PREVENT FLOODING OF CAVITY IF OUTDOOR UNDERGROUND CONDUIT RUNS ARE FILLED WITH WATER.
  - POLYETHYLENE PULL ROPES SHALL BE PROVIDED BETWEEN PULLBOXES AND STUB-UPS FOR EACH CONDUIT.
  - DUCT BANK SHALL SLOPE DOWN AWAY FROM BUILDING AS SHOWN ON PLAN.
  - GROUNDING MAT FOR PERSONNEL PROTECTION SHALL BE PREFABRICATED 4' X 6', SIZE 6" X 6" APART, WIRE NO. 6 AWG, 40% CONDUCTIVITY COPPERWELD, WITH CENTER WIRE # 1/0 AWG, ERICO MFR. CABLE TO MESH TYPE PT, MOLD PTC-1G2C, WELD METAL #65.
  - GROUNDING MAT SHALL BE INSTALLED 12" DEEP MIN. ADJACENT TO HIGH VOLTAGE PRIMARY SIDE.
  - THRUST BLOCKS SHALL BE PROVIDED AT ALL BENDS AND TEES, FOR ALL PRESSURE LINES. SEE DETAIL 3, SHEET WA-C-055 FOR SIZES.
  - SEE DETAIL 5, SHEET WA-C-055 FOR TRENCH BEDDING REQUIREMENTS.

COMMUNICATION PULL BOX LOCATIONS

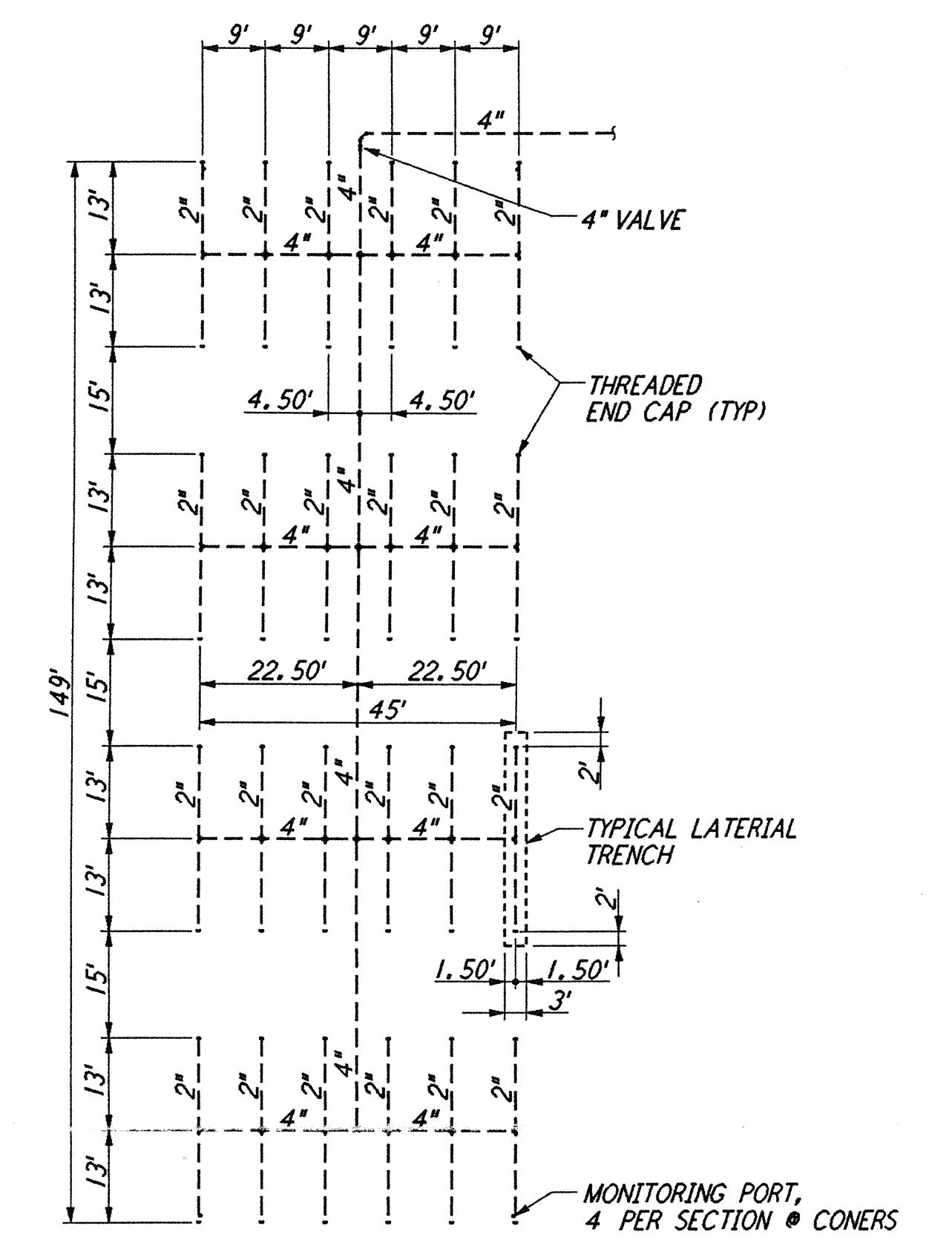
CPB	COORDINATES	
	NORTH	EAST
C6	411019.6212	1915854.6469
C7	411088.5674	1915795.6032
C8	411166.5147	1915744.7855
C9	411224.9736	1915701.0642
C10	411281.8712	1915777.1408
C11	411341.7635	1915857.2215
C12	411400.8034	1915936.1624

NOTE: COORDINATES ARE TO THE CENTER OF PULL BOX.

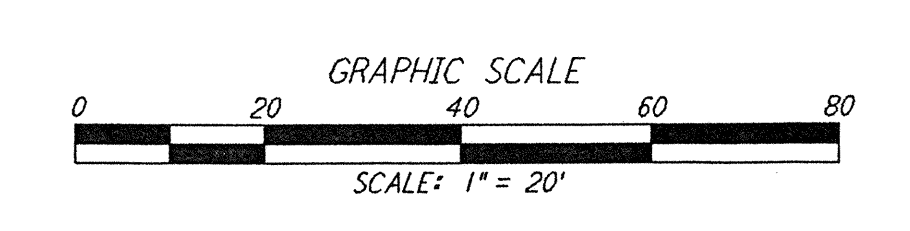
ELECTRICAL PULL BOX LOCATIONS

EPB	COORDINATES	
	NORTH	EAST
E1	411058.1263	1915811.3507
E2	411211.9940	1915690.9454
E3	411278.4011	1915779.7361
E4	411338.2937	1915859.8166
E5	411400.7777	1915943.3619
E6	411448.1159	1915907.9574
E7	411412.1916	1915934.8255
E8	411346.9645	1915847.6118
E9	411286.9041	1915892.5312

NOTE: COORDINATES ARE TO THE CENTER OF PULL BOX.



(3 SECTIONS TOTAL)  
 TYPICAL LEACH FIELD SECTION  
 SCALE: 1" = 20'



NO.	DATE	BY	CHKD	ENGR	PROJ	DESCRIPTION
A	4/19/96	WRB	MM			FINAL DESIGN REVIEW & BID

DRAWN	WRB
CHECKED	
ENGINEER	
PROJ	

**PARSONS**  
 100 WEST WALNUT STREET  
 PASADENA, CALIFORNIA

**LIGO**  
 CALIFORNIA INSTITUTE OF TECHNOLOGY  
 MASSACHUSETTS INSTITUTE OF TECHNOLOGY

LASER INTERFEROMETER  
 GRAVITATIONAL-WAVE OBSERVATORY  
 SITE NO. 1 - HANFORD, WASHINGTON

TITLE	CIVIL CORNER STATION UTILITY PLAN ENLARGED PLANS
SCALE	AS NOTED
CONTRACT NUMBER	PP150969
PROJECT NUMBER	8094
SHEET NUMBER	WA-C-510