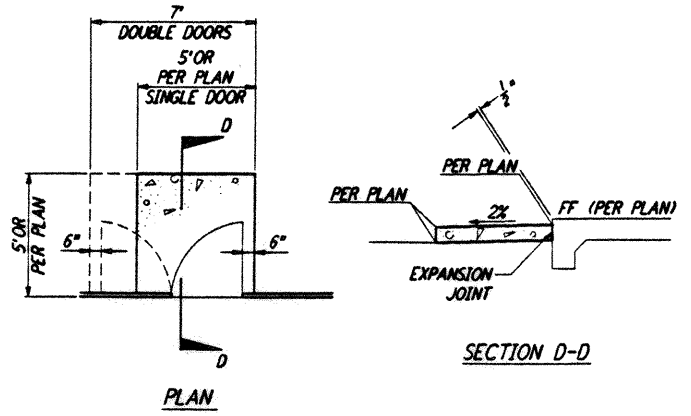
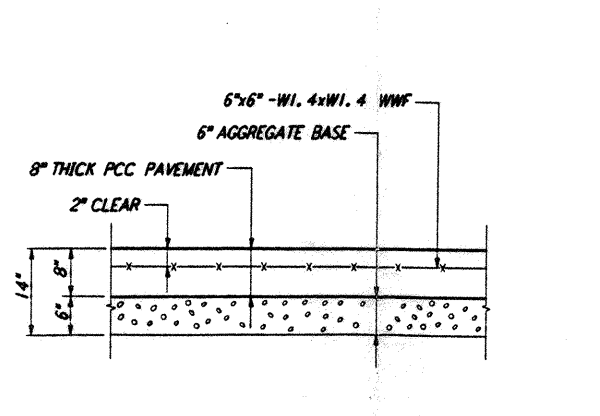


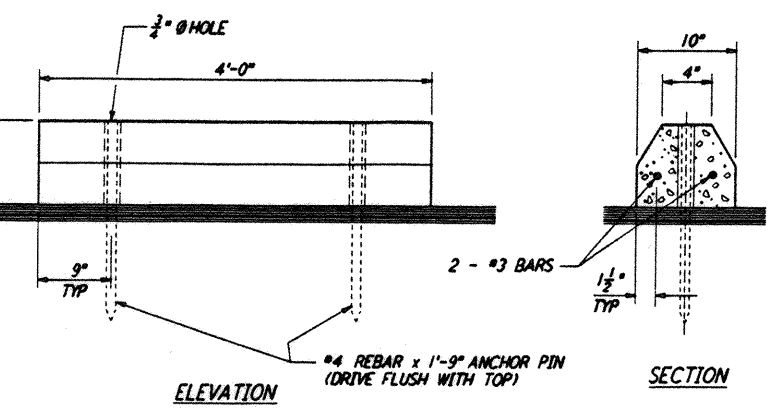
CONCRETE WALKWAY (1) REF: WA-C-051, WA-C-505, WA-C-006, WA-C-021, WA-C-025, WA-C-041, WA-C-045



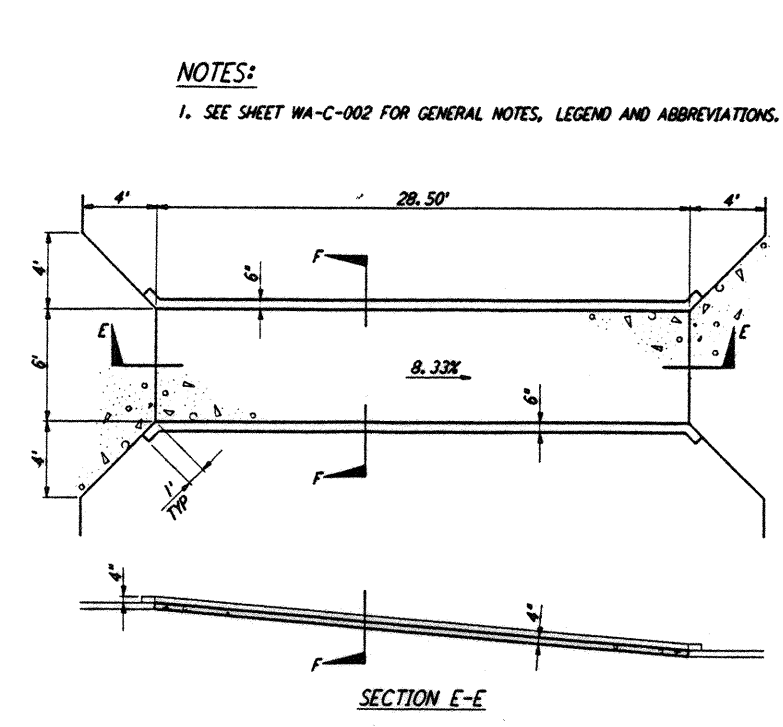
CONCRETE STOOP (2) REF: WA-C-051, WA-C-505, WA-C-021, WA-C-025, WA-C-041, WA-C-045



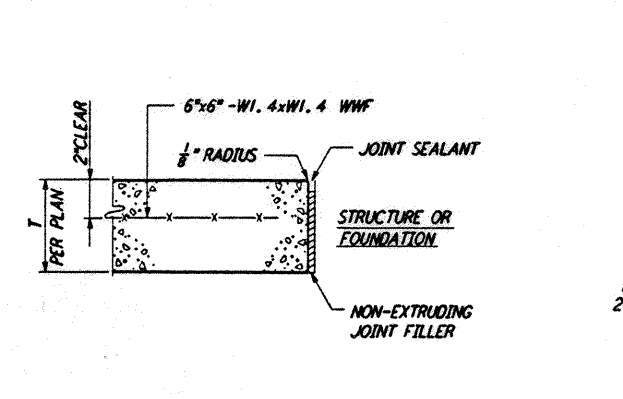
CONCRETE PAVEMENT (3) REF: WA-C-051, WA-C-505, WA-C-006, WA-C-021, WA-C-025, WA-C-041, WA-C-045



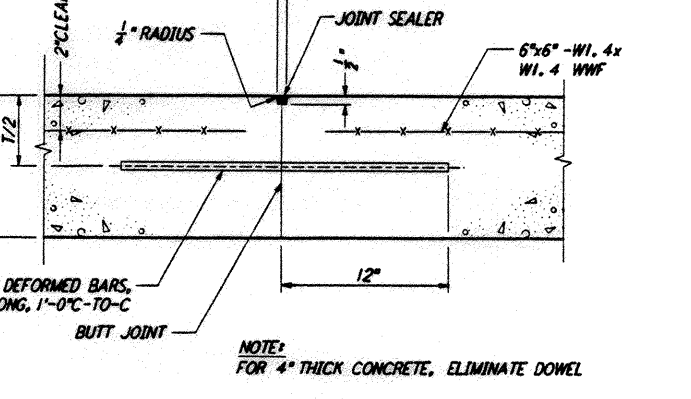
CONCRETE PARKING BUMPER (4) REF: WA-C-051, WA-C-505, WA-C-006, WA-C-021, WA-C-025, WA-C-041, WA-C-045



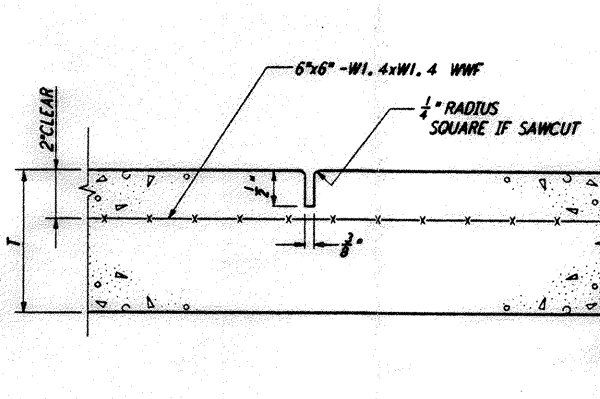
CONCRETE RAMP (9) REF: WA-C-051, WA-C-505, WA-C-006



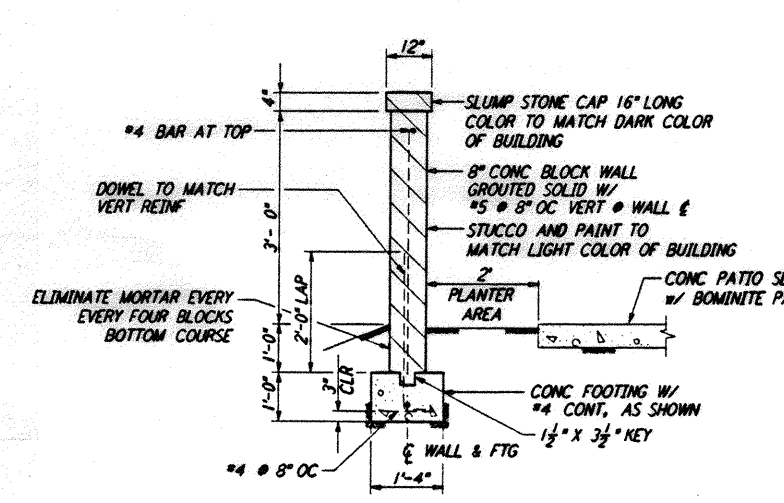
EXPANSION JOINT (5) REF: WA-C-051, WA-C-505, WA-C-006, WA-C-021, WA-C-025, WA-C-041, WA-C-045



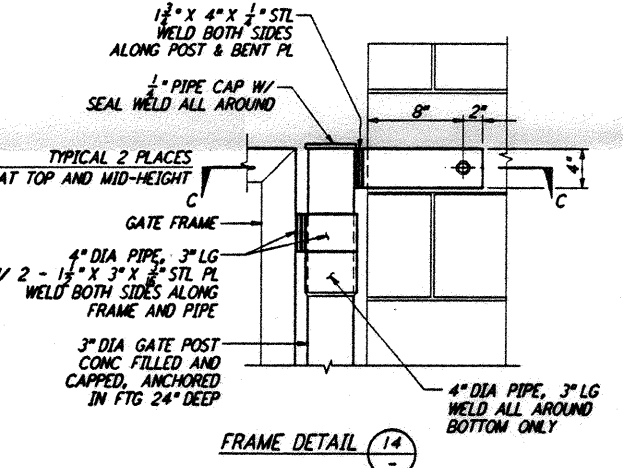
CONSTRUCTION JOINT (6) REF: WA-C-051, WA-C-505, WA-C-006, WA-C-021, WA-C-025, WA-C-041, WA-C-045



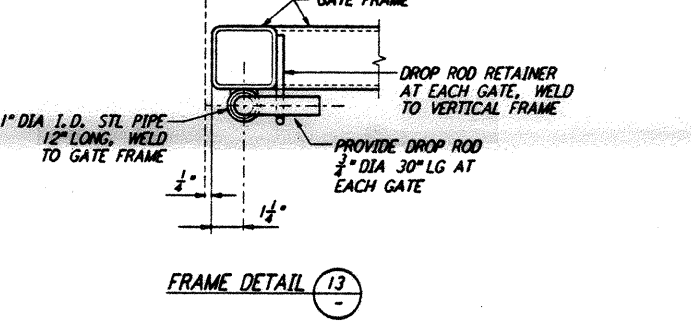
CONTRACTION JOINT (7) REF: WA-C-051, WA-C-505, WA-C-006, WA-C-021, WA-C-025, WA-C-041, WA-C-045



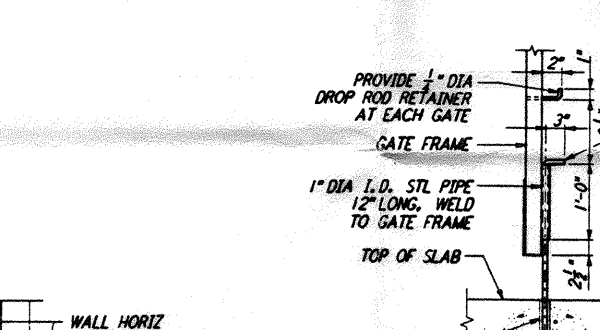
PATIO WALL (8) REF: WA-C-051, WA-C-505, WA-C-006



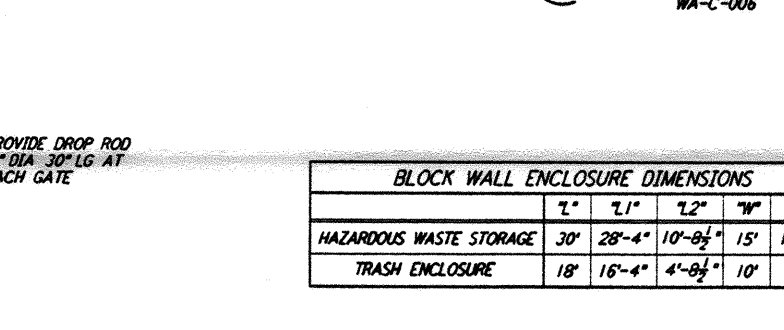
GATE ELEVATION (14)



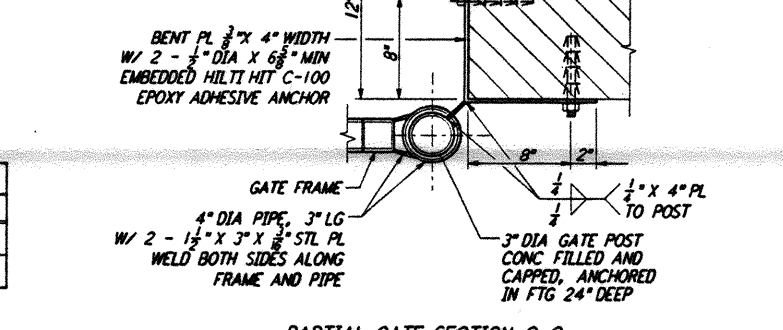
FRAME DETAIL (13)



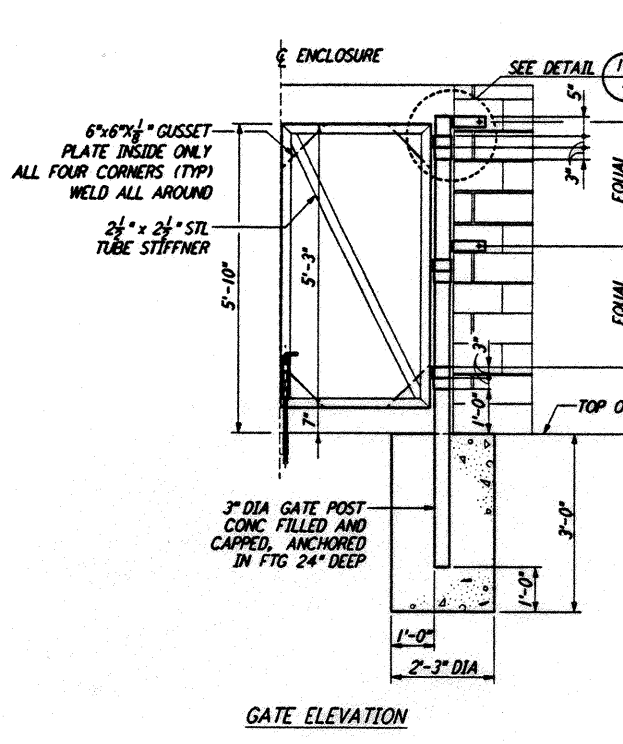
PARTIAL GATE SECTION A-A



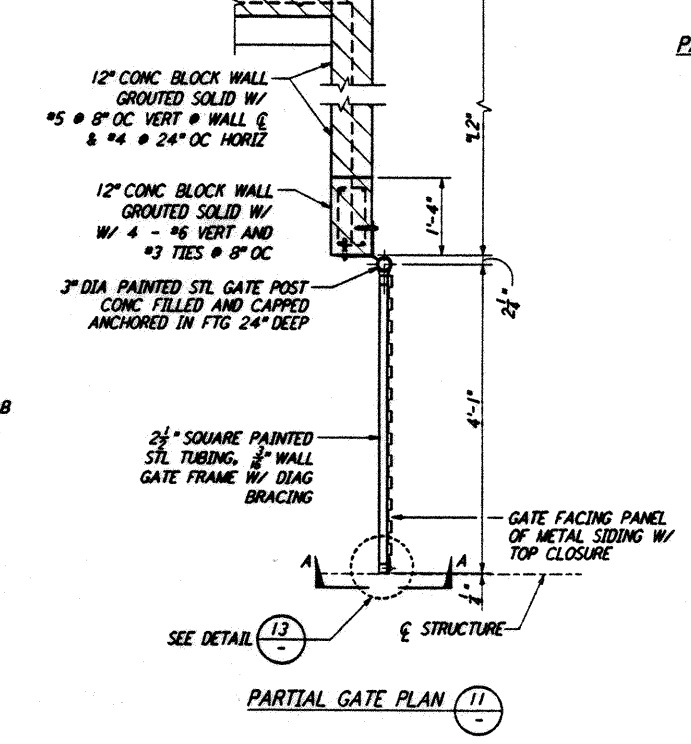
BLOCK WALL ENCLOSURE DIMENSIONS



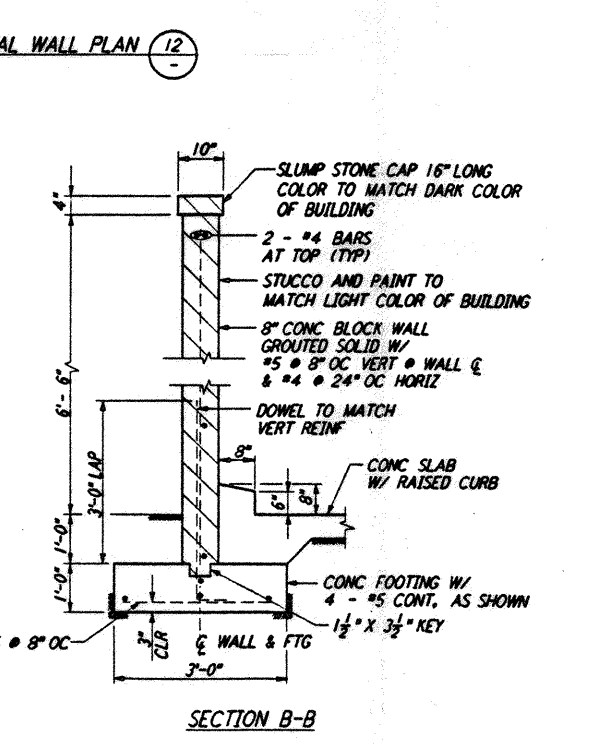
PARTIAL GATE SECTION C-C



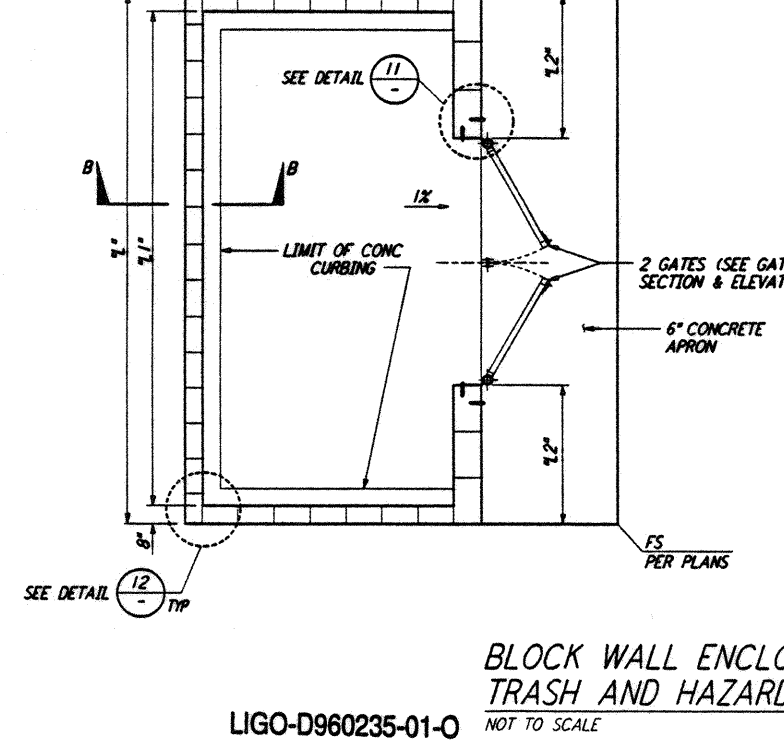
GATE ELEVATION (14)



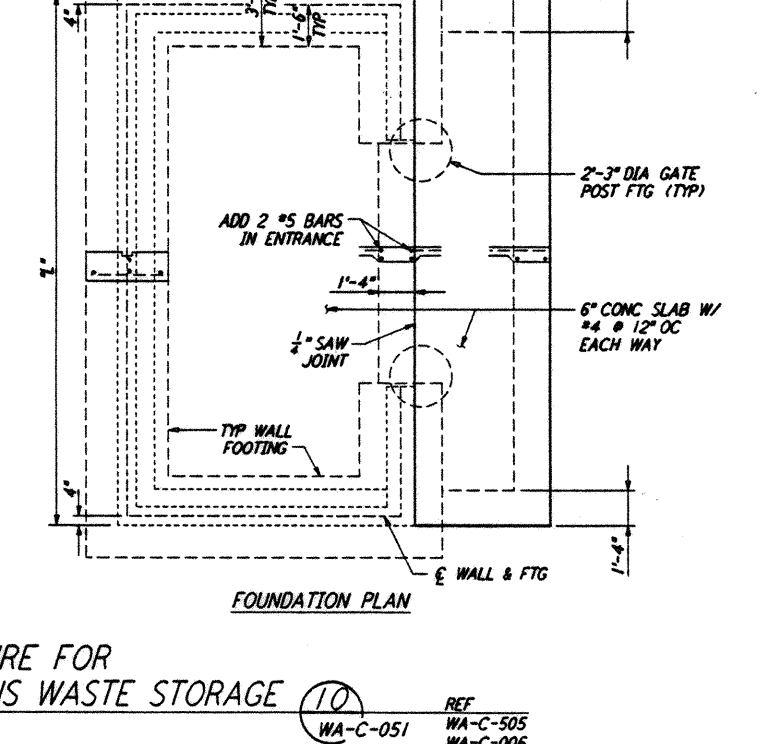
PARTIAL GATE PLAN (11)



SECTION B-B



FOUNDATION PLAN



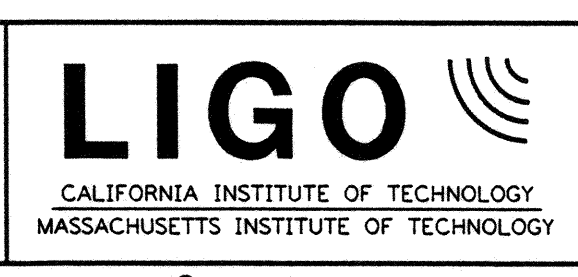
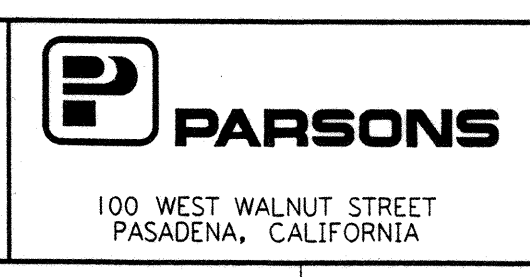
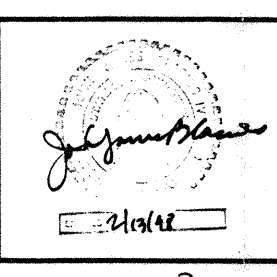
FOUNDATION PLAN

BLOCK WALL ENCLOSURE FOR TRASH AND HAZARDOUS WASTE STORAGE (10) REF: WA-C-051, WA-C-505, WA-C-006

This document and the design it covers are the property of PARSONS. They are loaned only with the borrower's expressed written agreement that they will not be reproduced, copied, loaned, exhibited, or used in any other way, except by written consent from PARSONS to the borrower.

NO.	DATE	BY	CHKD	ENGR	PROJ	DESCRIPTION
1	2-28-97	WRB	CL			REVISED DETAIL / CALLOUTS

NO.	FOR CONSTRUCTION	DATE
DRAWN	WRB	9/28/95
CHECKED	ML	7/9/96
ENGINEER	JB	7/9/96
PROJ	MDW	7/9/96



LASER INTERFEROMETER GRAVITATIONAL-WAVE OBSERVATORY SITE NO. 1 - HANFORD, WASHINGTON			
CIVIL SITEWORK DETAILS SHEET 1	AS NOTED	PP150969	8094
WA-C-051			