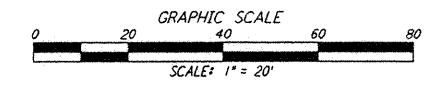
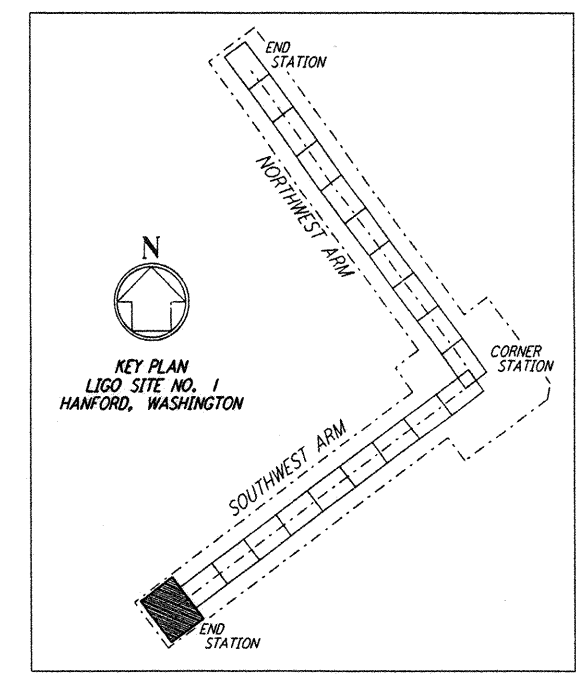
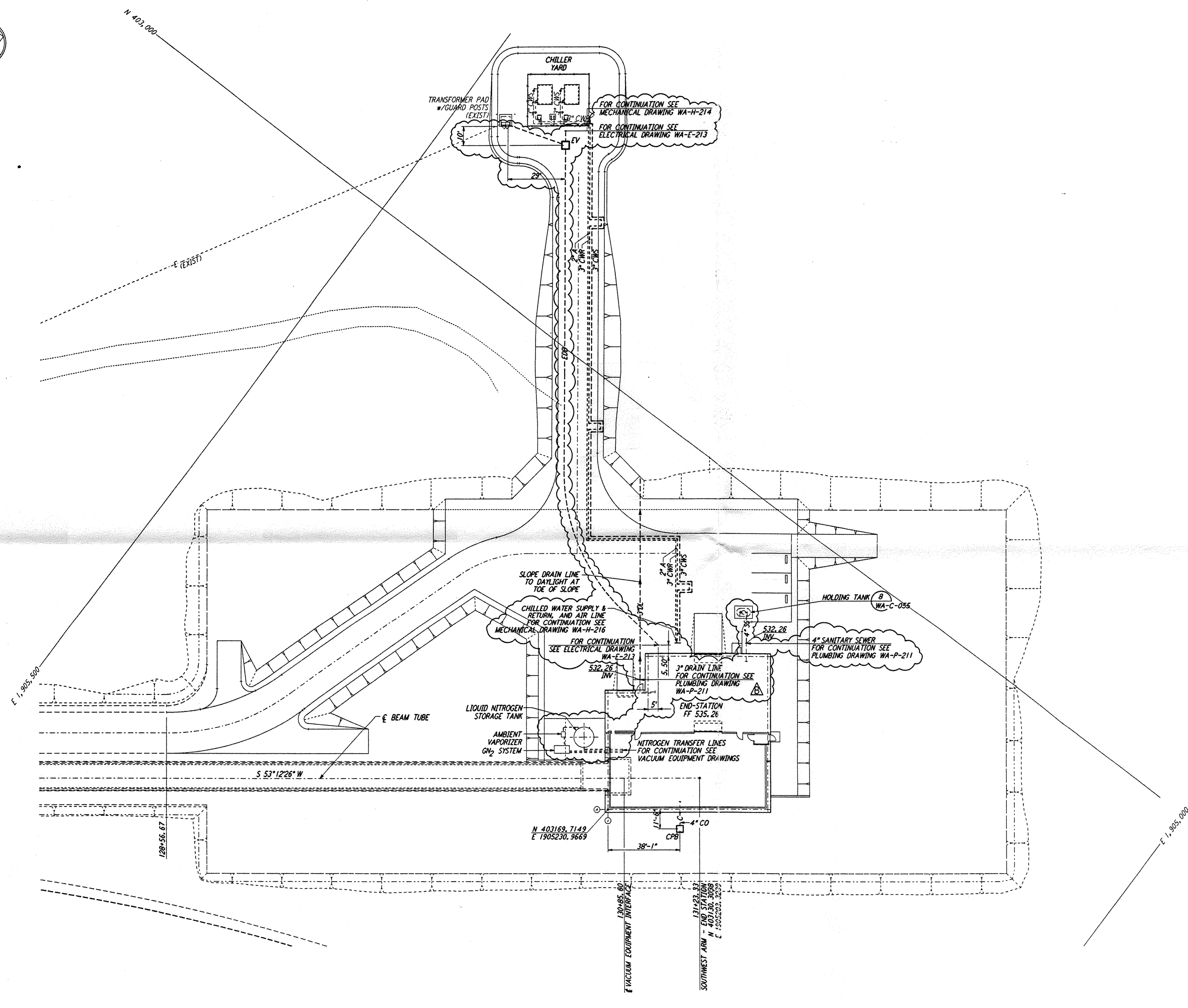
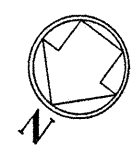


**NOTES:**  
 1. SEE SHEET WA-C-002 FOR GENERAL NOTES, LEGEND AND ABBREVIATIONS.



LIGO-D960233-B-0

This document and the design it covers are the property of PARSONS. They are loaned only with the borrower's expressed written agreement that they will not be reproduced, copied, loaned, exhibited, or used in any other way, except by written consent from PARSONS to the borrower.

This document and the design it covers are the property of PARSONS. They are loaned only with the borrower's expressed written agreement that they will not be reproduced, copied, loaned, exhibited, or used in any other way, except by written consent from PARSONS to the borrower.

REFERENCES		REVISIONS		DRAWN		CHECKED		ENGINEER		PROJ.	
DRAWING NO.	DESCRIPTION	NO.	DATE	BY	CHKD	ENGR	PROJ.				
		B	5/22/96	WRB	ML	JB	MDW				BID ADDENDUM #2
		A	4/19/96	WRB	ML	JB	MDW				FINAL DESIGN REVIEW & BID

DRAWN	WRB
CHECKED	
ENGINEER	
PROJ.	

**PARSONS**  
 100 WEST WALNUT STREET  
 PASADENA, CALIFORNIA

**LIGO**  
 CALIFORNIA INSTITUTE OF TECHNOLOGY  
 MASSACHUSETTS INSTITUTE OF TECHNOLOGY

LASER INTERFEROMETER  
 GRAVITATIONAL-WAVE OBSERVATORY  
 SITE NO. 1 - HANFORD, WASHINGTON

TITLE: CIVIL SOUTHWEST ARM END-STATION UTILITY PLAN

SCALE: 1" = 20'

CONTRACT NUMBER: PPI50969

PROJECT NUMBER: 8094

SHEET NUMBER: WA-C-047