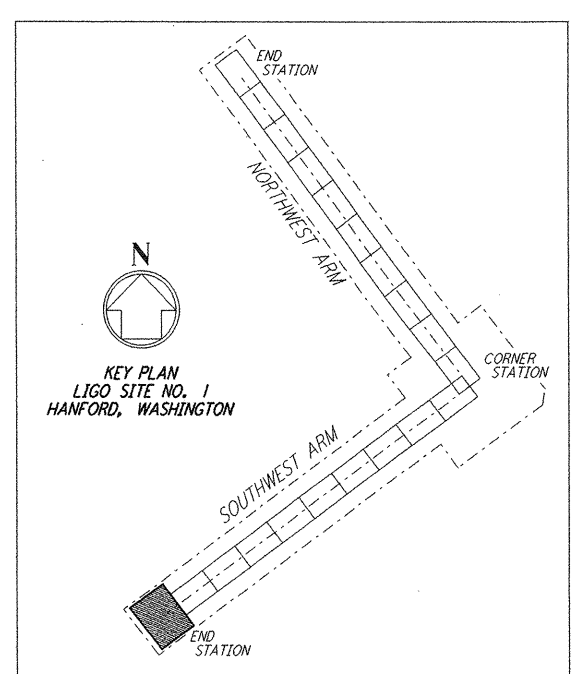


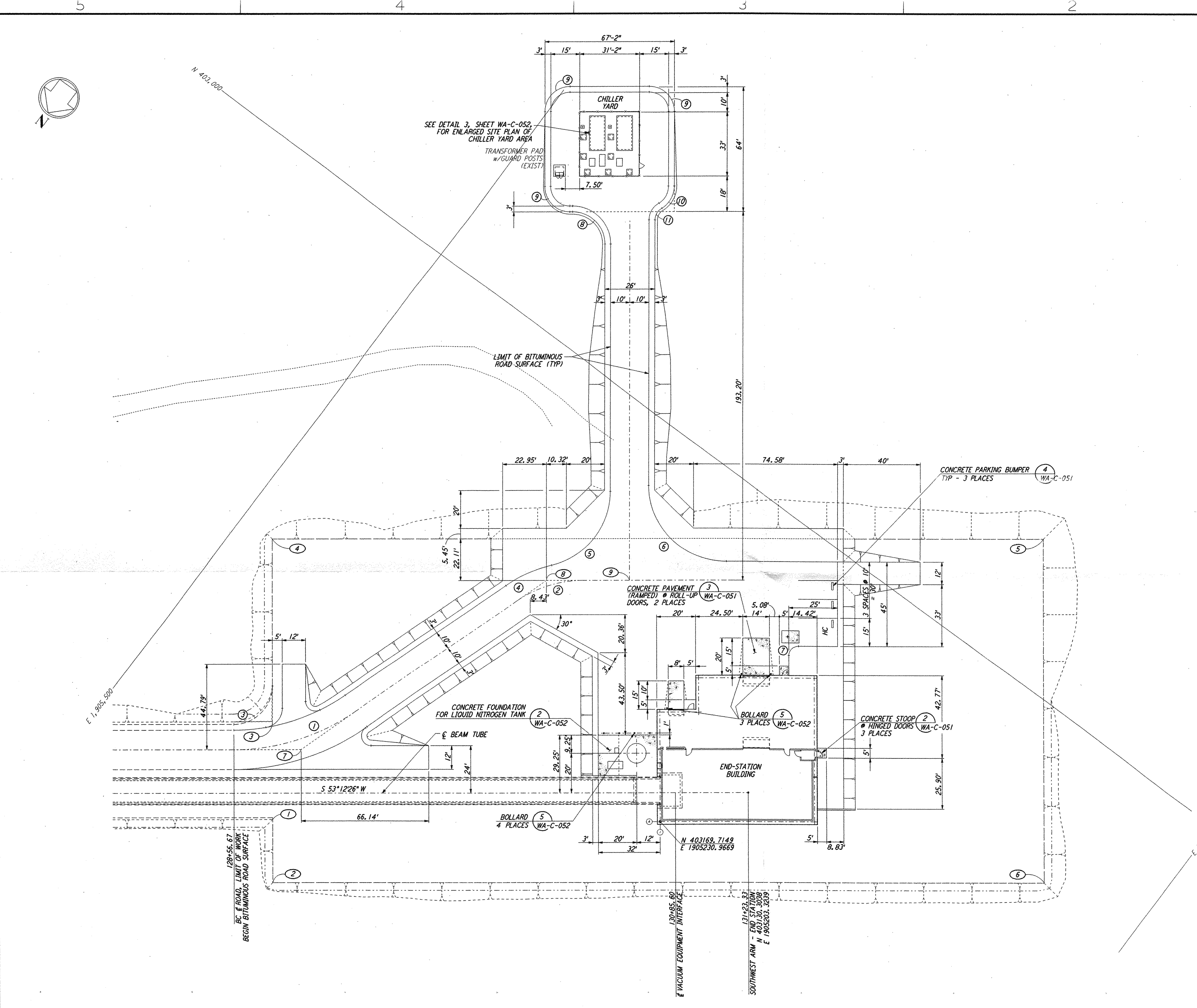
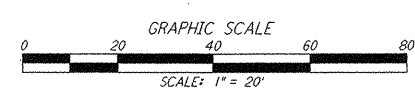
**NOTES:**  
 1. SEE SHEET WA-C-002 FOR GENERAL NOTES, LEGEND AND ABBREVIATIONS.

| CURVE DATA |           |        |         |        |                     |
|------------|-----------|--------|---------|--------|---------------------|
| Δ          | RADIUS    | LENGTH | TANGENT | REMARK |                     |
| 1          | 35°00'00" | 110'   | 67.19'  | 34.68' | ⊘ ROAD              |
| 2          | 35°00'00" | 60'    | 36.65'  | 18.92' | ⊘ ROAD              |
| 3          | 90°00'00" | 20'    | 31.42'  | 20.00' | EDGE OF PAD (EXIST) |
| 4          | 21°32'41" | 70'    | 26.32'  | 13.32' |                     |
| 5          | 76°32'48" | 40'    | 53.44'  | 31.56' |                     |
| 6          | 90°00'00" | 40'    | 62.83'  | 40.00' |                     |
| 7          | 90°00'00" | 5'     | 7.85'   | 5.00'  |                     |
| 8          | 90°00'00" | 17'    | 26.70'  | 17.00' |                     |
| 9          | 90°00'00" | 13'    | 20.42'  | 13.00' |                     |
| 10         | 60°00'00" | 13'    | 13.61'  | 7.51'  |                     |
| 11         | 60°00'00" | 7'     | 7.33'   | 4.04'  |                     |

| COORDINATES |             |              |                        |
|-------------|-------------|--------------|------------------------|
| POINT       | NORTH       | EAST         | REMARK                 |
| 1           | 403288.9810 | 1905392.6680 | PI EDGE OF PAD (EXIST) |
| 2           | 403315.4070 | 1905372.9040 | PI EDGE OF PAD (EXIST) |
| 3           | 403248.9398 | 1905422.6147 | PI EDGE OF PAD (EXIST) |
| 4           | 403171.2620 | 1905480.7100 | PI EDGE OF PAD (EXIST) |
| 5           | 402931.6922 | 1905160.3876 | PI EDGE OF PAD (EXIST) |
| 6           | 403075.8373 | 1905052.5815 | PI EDGE OF PAD (EXIST) |
| 7           | 403251.6246 | 1905402.2720 | PI ⊘ ROAD              |
| 8           | 403103.8631 | 1905353.6693 | PI ⊘ ROAD              |
| 9           | 403077.9173 | 1905318.9776 | ⊘ ROAD INTERSECTION    |



LIGO-D960231-01-0



This document and the design it covers are the property of PARSONS. They are loaned only with the borrower's expressed written agreement that they will not be reproduced, copied, loaned, exhibited, or used in any other way, except by written consent from PARSONS to the borrower.

This document and the design it covers are the property of PARSONS. They are loaned only with the borrower's expressed written agreement that they will not be reproduced, copied, loaned, exhibited, or used in any other way, except by written consent from PARSONS to the borrower.

| NO. | DATE    | BY  | CHKD | ENGR | PROJ | DESCRIPTION         |
|-----|---------|-----|------|------|------|---------------------|
| 1   | 5/15/98 | WRB |      |      |      | ISSUED FOR AS-BUILT |

| FOR CONSTRUCTION |     |         |
|------------------|-----|---------|
| DRAWN            | WRB | 9/28/95 |
| CHECKED          | ML  | 7/9/96  |
| ENGINEER         | JB  | 7/9/96  |
| PROJ             | MDW | 7/9/96  |

**AS-BUILT DRAWINGS**

**PARSONS**  
 100 WEST WALNUT STREET  
 PASADENA, CALIFORNIA

**LIGO**  
 CALIFORNIA INSTITUTE OF TECHNOLOGY  
 MASSACHUSETTS INSTITUTE OF TECHNOLOGY

LASER INTERFEROMETER  
 GRAVITATIONAL-WAVE OBSERVATORY  
 SITE NO. 1 - HANFORD, WASHINGTON

TITLE: CIVIL  
 SOUTHWEST ARM  
 END-STATION  
 PLOT PLAN

SCALE: 1" = 20'  
 SHEET NUMBER: WA-C-045

CONTRACT NUMBER: PPI50969  
 PROJECT NUMBER: 8094