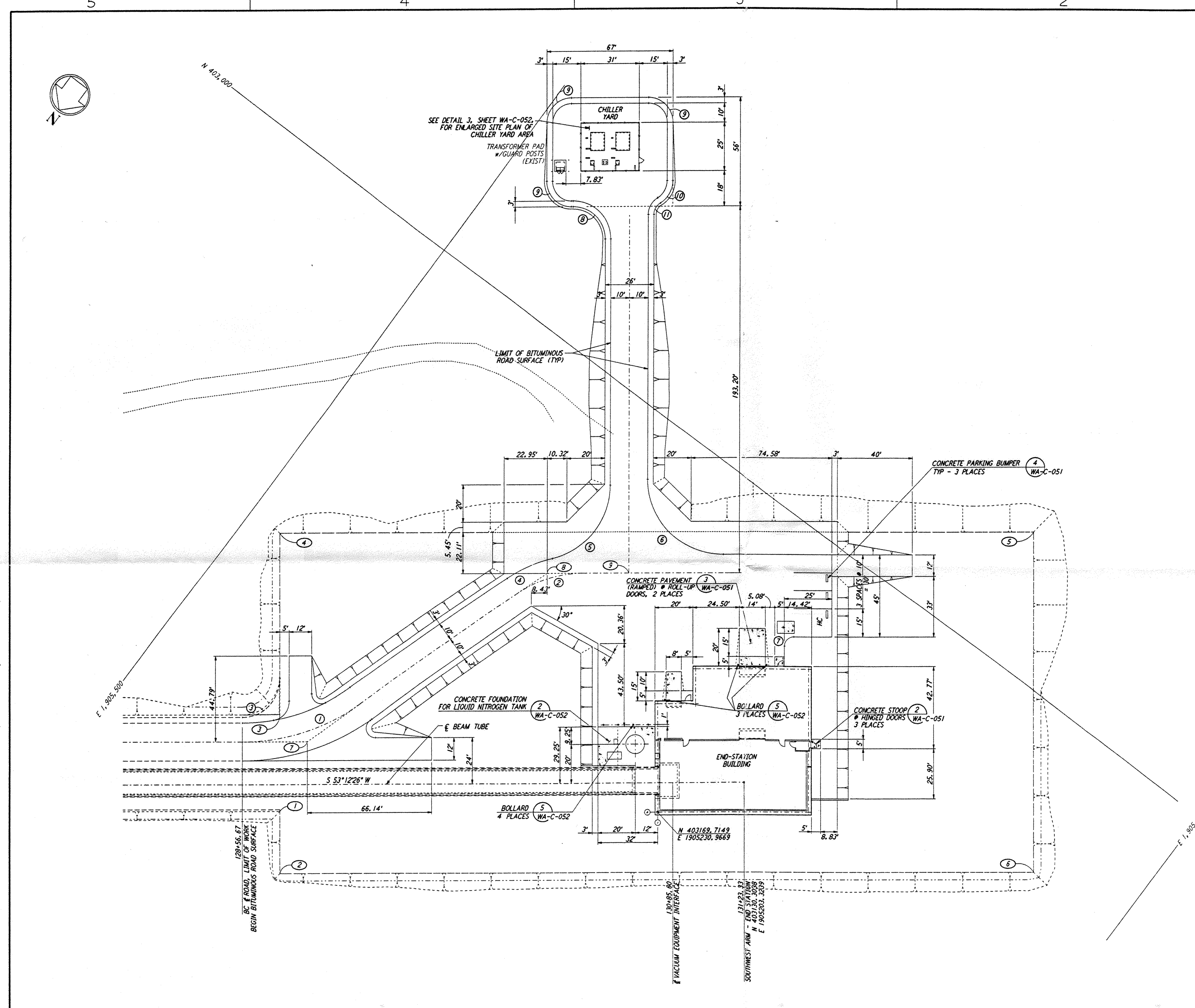
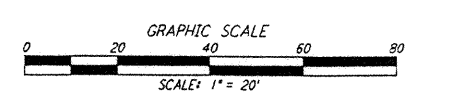
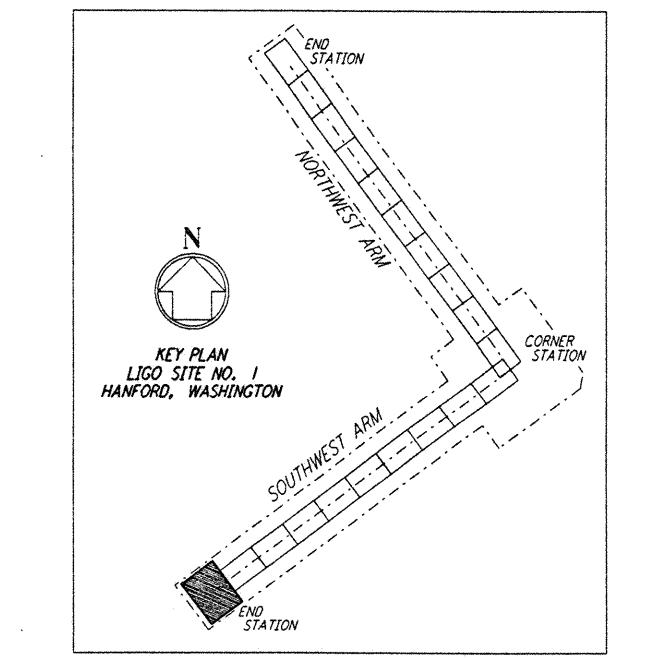


NOTES:
 1. SEE SHEET WA-C-002 FOR GENERAL NOTES, LEGEND AND ABBREVIATIONS.



CURVE DATA					
NO.	Δ	RADIUS	LENGTH	TANGENT	REMARK
1	35°00'00"	110'	67.19'	34.68'	⊕ ROAD
2	35°00'00"	60'	36.65'	18.92'	⊕ ROAD
3	90°00'00"	20'	31.42'	20.00'	EDGE OF PAD (EXIST)
4	21°32'41"	70'	26.32'	13.32'	
5	76°32'48"	40'	53.44'	31.56'	
6	90°00'00"	40'	62.83'	40.00'	
7	90°00'00"	5'	7.85'	5.00'	
8	90°00'00"	17'	26.70'	17.00'	
9	90°00'00"	13'	20.42'	13.00'	
10	60°00'00"	13'	13.61'	7.51'	
11	60°00'00"	7'	7.33'	4.04'	

COORDINATES			
NO.	NORTH	EAST	REMARK
1	403288.9810	1905392.6680	PI EDGE OF PAD (EXIST)
2	403315.4070	1905372.9040	PI EDGE OF PAD (EXIST)
3	403248.9398	1905422.6147	PI EDGE OF PAD (EXIST)
4	403171.2620	1905480.7100	PI EDGE OF PAD (EXIST)
5	402931.6922	1905160.3876	PI EDGE OF PAD (EXIST)
6	402875.8373	1905050.5815	PI EDGE OF PAD (EXIST)
7	403251.6246	1905402.2720	PI ⊕ ROAD
8	403103.8631	1905353.6693	PI ⊕ ROAD
9	403077.9173	1905316.9776	⊕ ROAD INTERSECTION

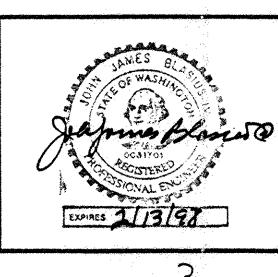


This document and the design it covers are the property of PARSONS. They are loaned only with the borrower's expressed written agreement that they will not be reproduced, copied, loaned, exhibited, or used in any other way, except by written consent from PARSONS to the borrower.

This document and the design it covers are the property of PARSONS. They are loaned only with the borrower's expressed written agreement that they will not be reproduced, copied, loaned, exhibited, or used in any other way, except by written consent from PARSONS to the borrower.

NO.	DATE	BY	CHKD	ENGR	PROJ	DESCRIPTION

FOR CONSTRUCTION
 DRAWN: WRB 9/28/95
 CHECKED: [Signature] 7/9/96
 ENGINEER: [Signature] 7/9/96
 PROJ: [Signature] 7/9/96



PARSONS
 100 WEST WALNUT STREET
 PASADENA, CALIFORNIA

LIGO
 CALIFORNIA INSTITUTE OF TECHNOLOGY
 MASSACHUSETTS INSTITUTE OF TECHNOLOGY

LASER INTERFEROMETER
 GRAVITATIONAL-WAVE OBSERVATORY
 SITE NO. 1 - HANFORD, WASHINGTON
 TITLE: CIVIL SOUTHWEST ARM END-STATION PLOT PLAN
 SCALE: 1" = 20'
 SHEET NUMBER: PP150969
 PROJECT NUMBER: 8094
WA-C-045