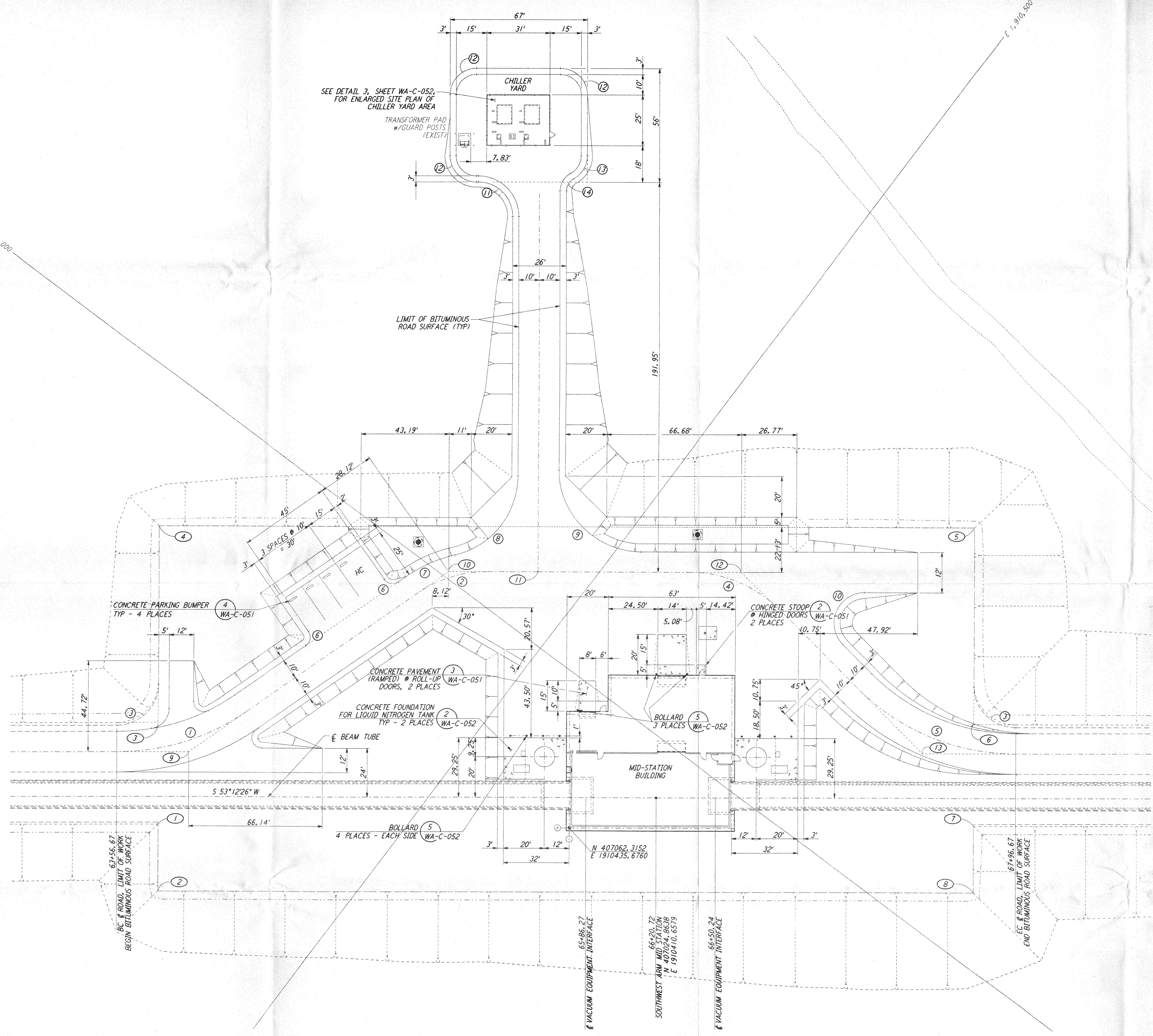


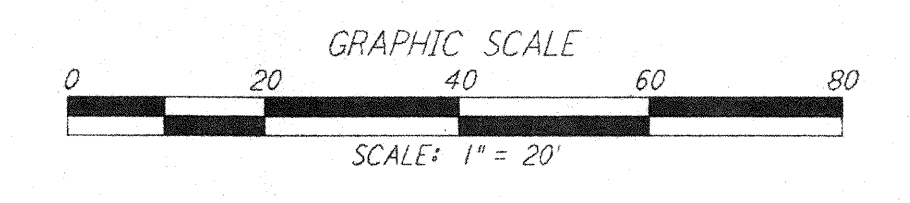
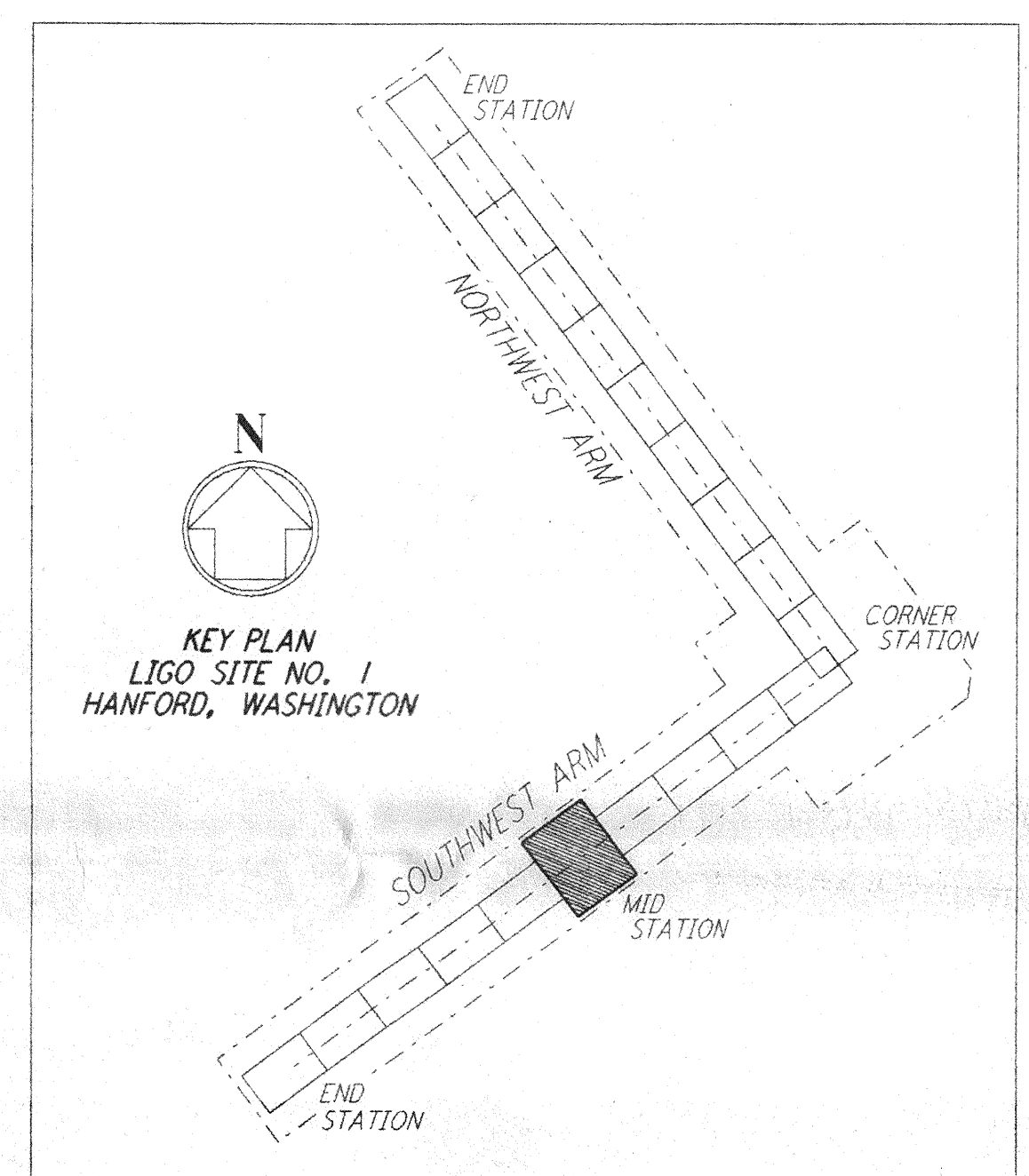
NOTES:
 1. SEE SHEET WA-C-002 FOR GENERAL NOTES, LEGEND AND ABBREVIATIONS.

This document and the design it covers are the property of PARSONS. They are loaned only with the borrower's expressed written agreement that they will not be reproduced, copied, loaned, exhibited, or used in any other way, except by written consent from PARSONS to the borrower.



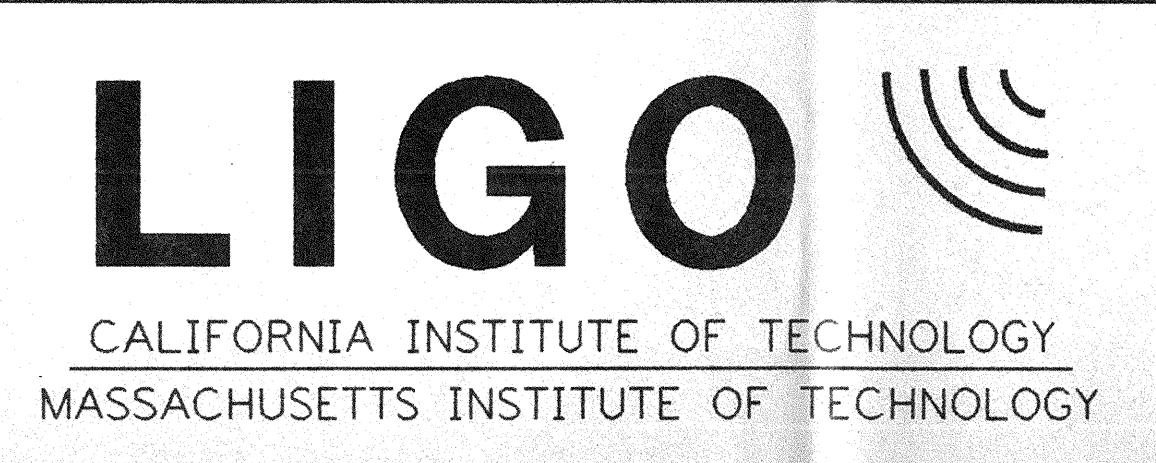
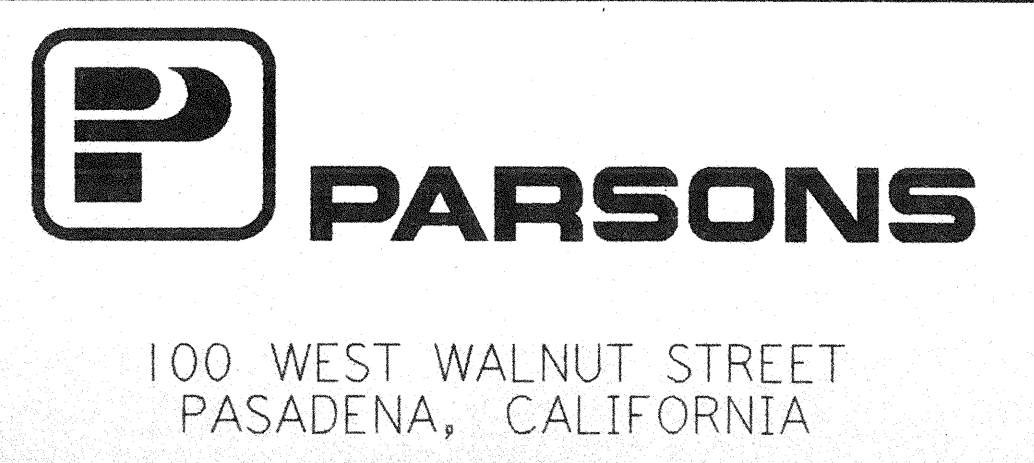
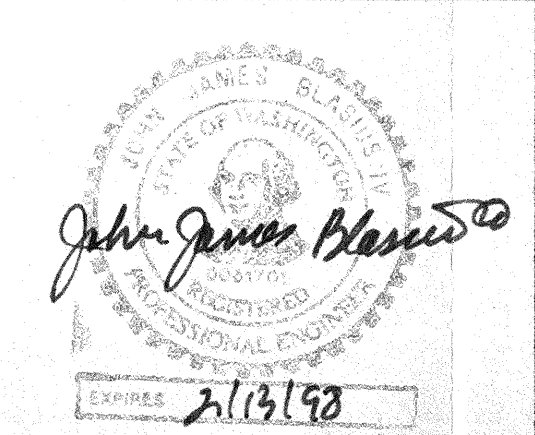
| CURVE DATA | | | | | |
|------------|------------|--------|--------|---------|---------------------|
| Curve No. | Δ | RADIUS | LENGTH | TANGENT | REMARK |
| 1 | 35°00'00" | 110' | 67.19' | 34.68' | ⊥ ROAD |
| 2 | 35°00'00" | 60' | 36.65' | 18.92' | ⊥ ROAD |
| 3 | 90°00'00" | 20' | 31.42' | 20.00' | EDGE OF PAD (EXIST) |
| 4 | 45°00'00" | 60' | 47.12' | 24.85' | ⊥ ROAD |
| 5 | 45°00'00" | 110' | 86.39' | 45.56' | ⊥ ROAD |
| 6 | 90°00'00" | 5' | 7.85' | 5.00' | |
| 7 | 21°54'32" | 70' | 26.77' | 13.55' | |
| 8 | 76°54'31" | 40' | 53.69' | 31.77' | |
| 9 | 90°00'00" | 40' | 62.83' | 40.00' | |
| 10 | 135°00'00" | 15' | 35.34' | 36.21' | |
| 11 | 90°00'00" | 17' | 26.70' | 17.00' | |
| 12 | 90°00'00" | 13' | 20.42' | 13.00' | |
| 13 | 60°00'00" | 13' | 13.61' | 7.51' | |
| 14 | 60°00'00" | 7' | 7.33' | 4.04' | |

| COORDINATES | | | |
|-------------|-------------|--------------|------------------------|
| Point No. | NORTH | EAST | REMARK |
| 1 | 407181.9780 | 1910597.9130 | PI EDGE OF PAD (EXIST) |
| 2 | 407208.4050 | 1910578.1490 | PI EDGE OF PAD (EXIST) |
| 3 | 407141.9558 | 1910627.8460 | PI EDGE OF PAD (EXIST) |
| 4 | 407064.2590 | 1910685.9550 | PI EDGE OF PAD (EXIST) |
| 5 | 406824.6893 | 1910365.6325 | PI EDGE OF PAD (EXIST) |
| 6 | 406902.3690 | 1910307.5359 | PI EDGE OF PAD (EXIST) |
| 7 | 406942.4090 | 1910277.5900 | PI EDGE OF PAD (EXIST) |
| 8 | 406968.8348 | 1910257.8261 | PI EDGE OF PAD (EXIST) |
| 9 | 407144.6223 | 1910607.5170 | PI ⊥ ROAD |
| 10 | 406996.8810 | 1910558.9213 | PI ⊥ ROAD |
| 11 | 406970.5250 | 1910523.6806 | ⊥ ROAD INTERSECTION |
| 12 | 406910.8228 | 1910443.8545 | PI ⊥ ROAD |
| 13 | 406928.8324 | 1910318.9889 | PI ⊥ ROAD |



| NO. | DATE | BY | CHKD | ENGR | PROJ | DESCRIPTION |
|-----|------|----|------|------|------|-------------|
| | | | | | | |
| | | | | | | |

| | |
|------------------|-------------|
| FOR CONSTRUCTION | |
| DRAWN | WRB 9/28/95 |
| CHECKED | 7/9/96 |
| ENGINEER | 7/9/96 |
| PRDJ | 7/9/96 |



LASER INTERFEROMETER
 GRAVITATIONAL-WAVE OBSERVATORY
 SITE NO. 1 - HANFORD, WASHINGTON

TITLE: CIVIL
 SOUTHWEST ARM
 MID-STATION
 PLOT PLAN

SCALE: 1" = 20'
 CONTRACT NUMBER: PP150969
 PROJECT NUMBER: 8094

SHEET NUMBER: **WA-C-041**

LIGO-D960228-00-0