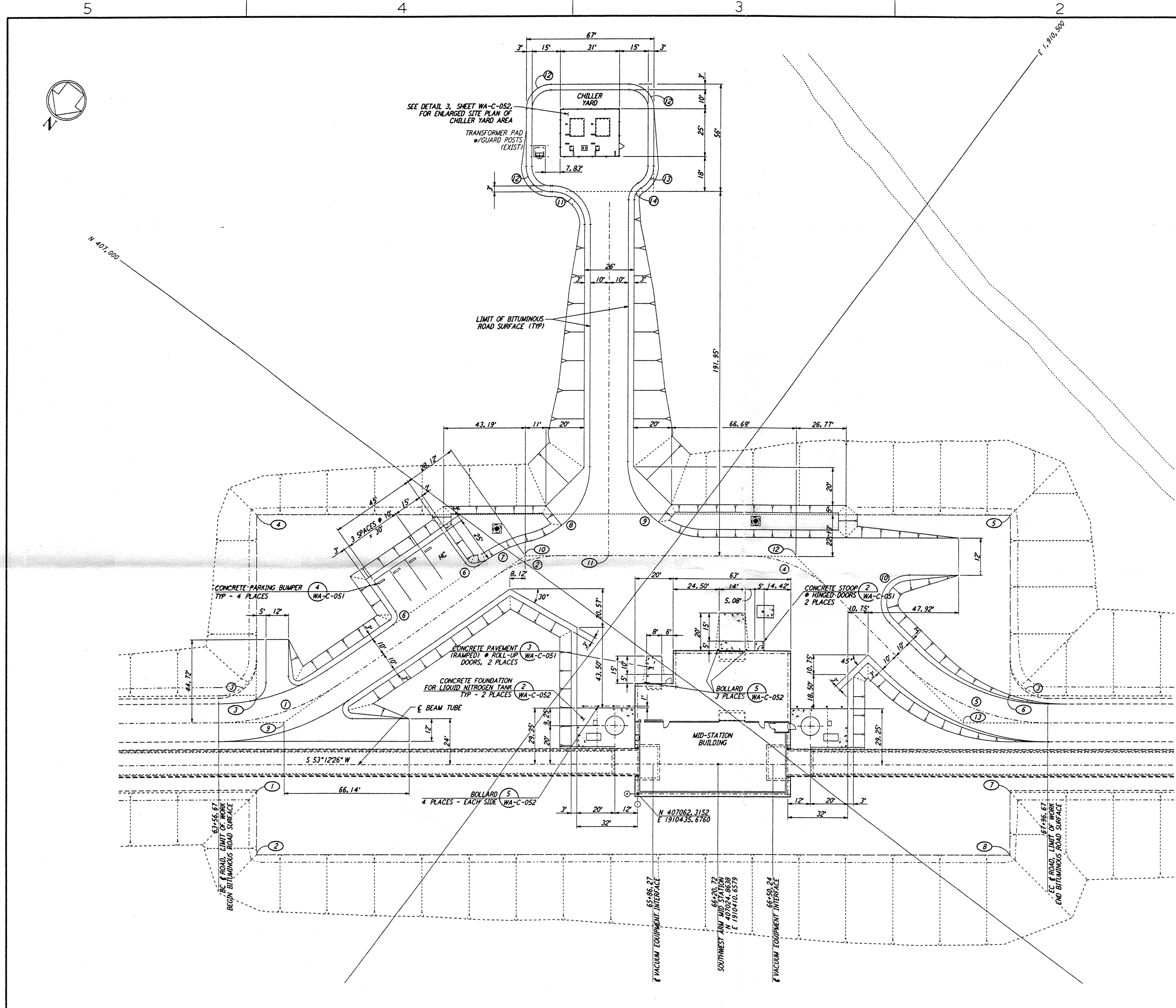
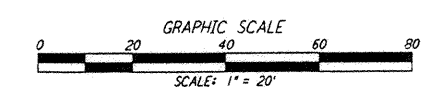
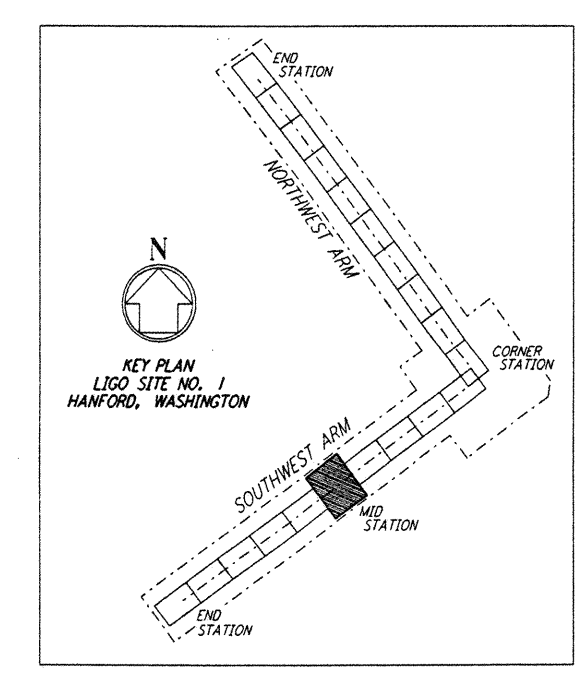


NOTES:
 1. SEE SHEET WA-C-002 FOR GENERAL NOTES, LEGEND AND ABBREVIATIONS.

CURVE DATA					
Δ	RADIUS	LENGTH	TANGENT	REMARK	
1	35°00'00"	110'	67.19'	34.68'	PI EDGE OF ROAD
2	35°00'00"	60'	36.65'	18.92'	PI EDGE OF ROAD
3	90°00'00"	20'	31.42'	20.00'	EDGE OF PAD (EXIST)
4	45°00'00"	60'	47.12'	24.85'	PI EDGE OF ROAD
5	45°00'00"	110'	86.39'	45.56'	PI EDGE OF ROAD
6	90°00'00"	5'	7.85'	5.00'	
7	21°54'32"	70'	26.77'	13.55'	
8	76°54'31"	40'	53.69'	31.77'	
9	90°00'00"	40'	62.83'	40.00'	
10	135°00'00"	15'	35.34'	36.21'	
11	90°00'00"	17'	26.70'	17.00'	
12	90°00'00"	13'	20.42'	13.00'	
13	60°00'00"	13'	13.61'	7.51'	
14	60°00'00"	7'	7.33'	4.04'	

COORDINATES			REMARK
Δ	NORTH	EAST	
1	407181.9780	1910597.9130	PI EDGE OF PAD (EXIST)
2	407208.4050	1910578.1490	PI EDGE OF PAD (EXIST)
3	407141.9558	1910627.8460	PI EDGE OF PAD (EXIST)
4	407064.2590	1910685.9550	PI EDGE OF PAD (EXIST)
5	406824.6893	1910365.6325	PI EDGE OF PAD (EXIST)
6	406902.3690	1910307.5359	PI EDGE OF PAD (EXIST)
7	406942.4090	1910277.5900	PI EDGE OF PAD (EXIST)
8	406968.8348	1910257.8261	PI EDGE OF PAD (EXIST)
9	407144.6723	1910607.5170	PI EDGE OF ROAD
10	406996.8810	1910558.9213	PI EDGE OF ROAD
11	406970.5250	1910523.6806	PI EDGE OF ROAD
12	406910.8228	1910443.8545	PI EDGE OF ROAD INTERSECTION
13	406928.8324	1910318.9889	PI EDGE OF ROAD



This document and the design it covers are the property of PARSONS. They are loaned only with the borrower's expressed written agreement that they will not be reproduced, copied, loaned, exhibited, or used in any other way, except by written consent from PARSONS to the borrower.

NO. JUL 03 07:12:28PM 1770 5374.DWG JAVLUS\BUREAU\N282\CALEPH\PLP

REFERENCES		REVISIONS		FOR CONSTRUCTION	
DRAWING NO.	DESCRIPTION	NO.	DATE	BY	CHKD

DRAWN: WRB 9/28/95
 CHECKED: [Signature] 7/14/96
 ENGINEER: [Signature] 7/14/96
 PROJ: LIGO-191916

100 WEST WALNUT STREET
 PASADENA, CALIFORNIA

CALIFORNIA INSTITUTE OF TECHNOLOGY
 MASSACHUSETTS INSTITUTE OF TECHNOLOGY

LASER INTERFEROMETER
 GRAVITATIONAL-WAVE OBSERVATORY
 SITE NO. 1 - HANFORD, WASHINGTON

CIVIL
 SOUTHWEST ARM
 MID-STATION
 PLOT PLAN

SCALE: 1" = 20'
 CONTRACT NUMBER: PPI50969
 PROJECT NUMBER: 8094
 SHEET NUMBER: WA-C-041