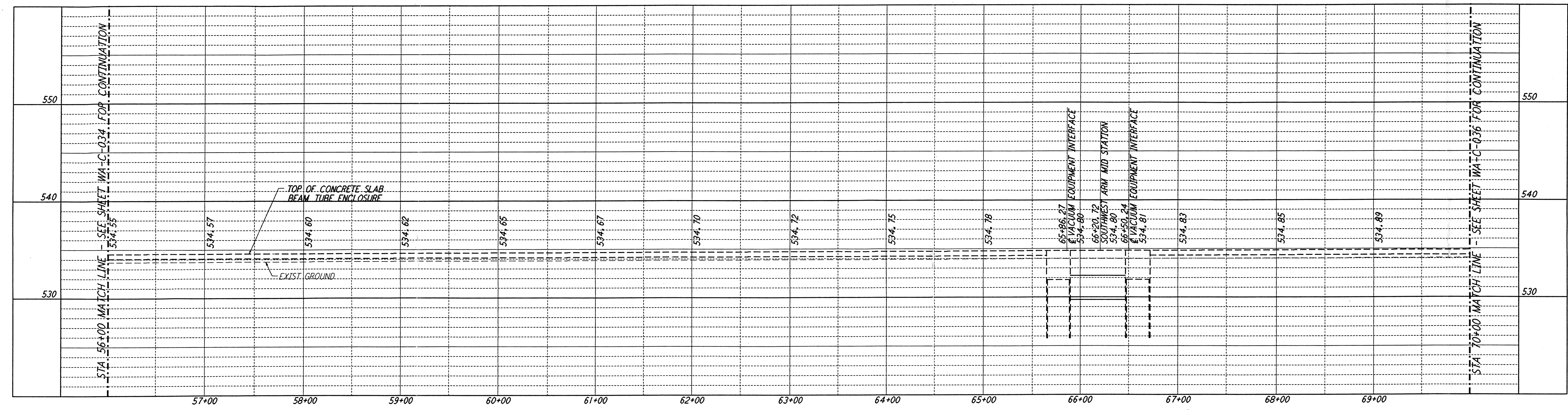
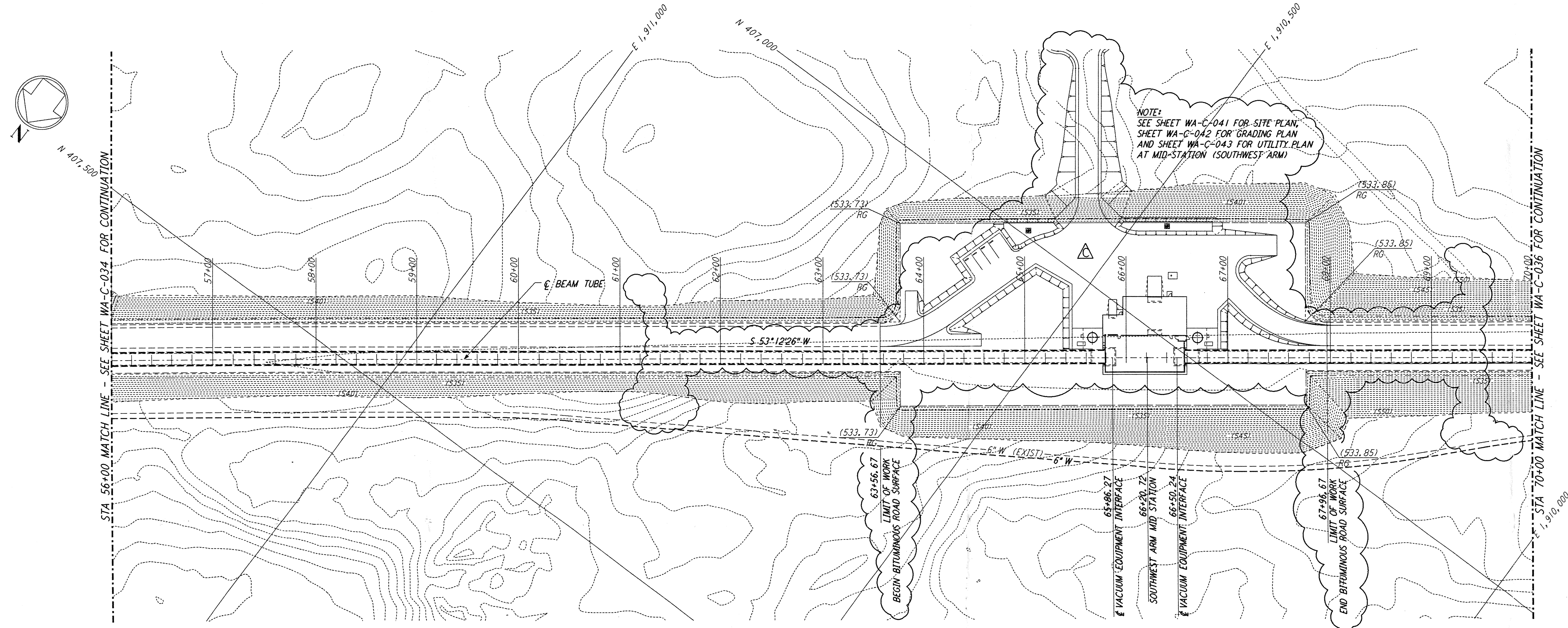


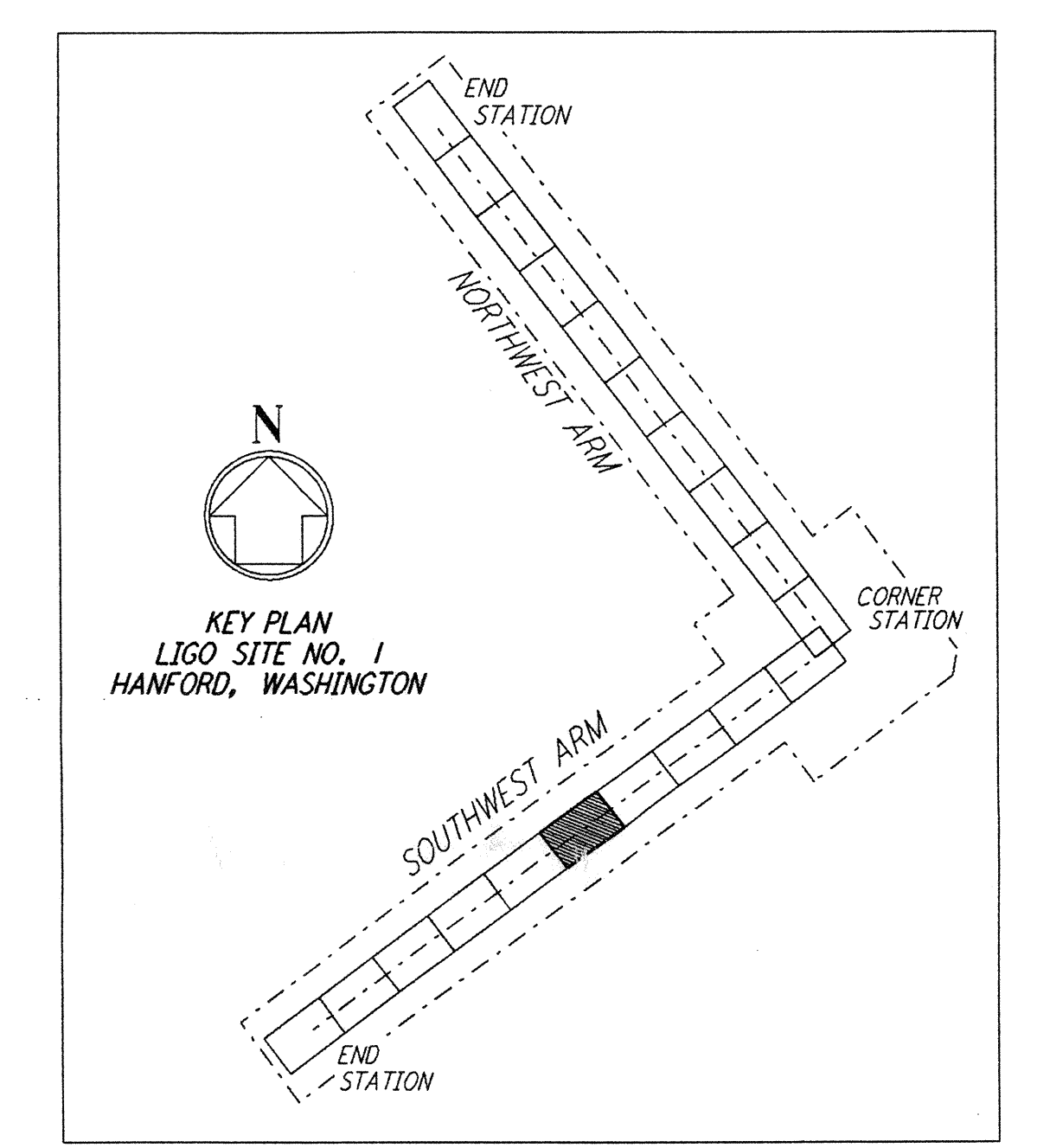
NOTES:
1. SEE SHEET WA-C-002 FOR GENERAL NOTES, LEGEND AND ABBREVIATIONS.



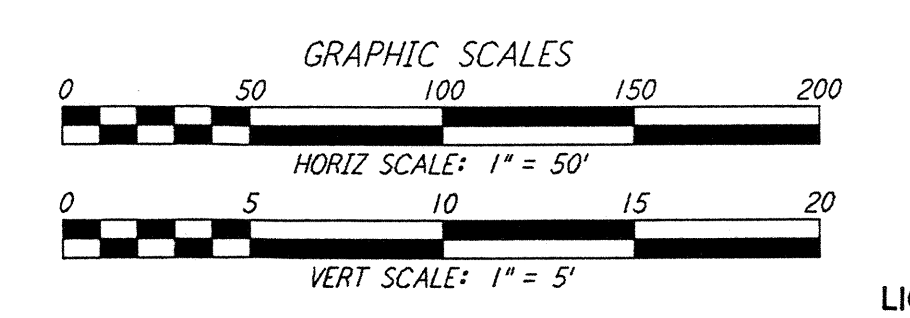
PROFILE
SCALES: HORIZ: 1" = 50'
VERT: 1" = 5'



PLAN
SCALE: 1" = 50'



KEY PLAN
LIGO SITE NO. 1
HANFORD, WASHINGTON



LIGO-D960222-C-0

This document and the design it covers are the property of PARSONS. They are loaned only with the borrower's expressed written agreement that they will not be reproduced, copied, loaned, exhibited, or used in any other way, except by written consent from PARSONS to the borrower.

NO.	DATE	BY	CHKD	ENGR	PROJ	DESCRIPTION
C	5/22/96	WRB	ML	JB	MDW	BID ADDENDUM #2
B	4/19/96	WRB	ML	JB	MDW	FINAL DESIGN REVIEW & BID
A	10/31/95	WRB	TDM			PRELIMINARY DESIGN REVIEW

△	DRAWN	WRB
□	CHECKED	
○	ENGINEER	
◇	PROJ	

PARSONS
100 WEST WALNUT STREET
PASADENA, CALIFORNIA

LIGO
CALIFORNIA INSTITUTE OF TECHNOLOGY
MASSACHUSETTS INSTITUTE OF TECHNOLOGY

LASER INTERFEROMETER
GRAVITATIONAL-WAVE OBSERVATORY
SITE NO. 1 - HANFORD, WASHINGTON

CIVIL
SOUTHWEST ARM
PLAN AND PROFILE
STA 56+00 TO STA 70+00

AS NOTED PPI50969 8094
WA - C - 035