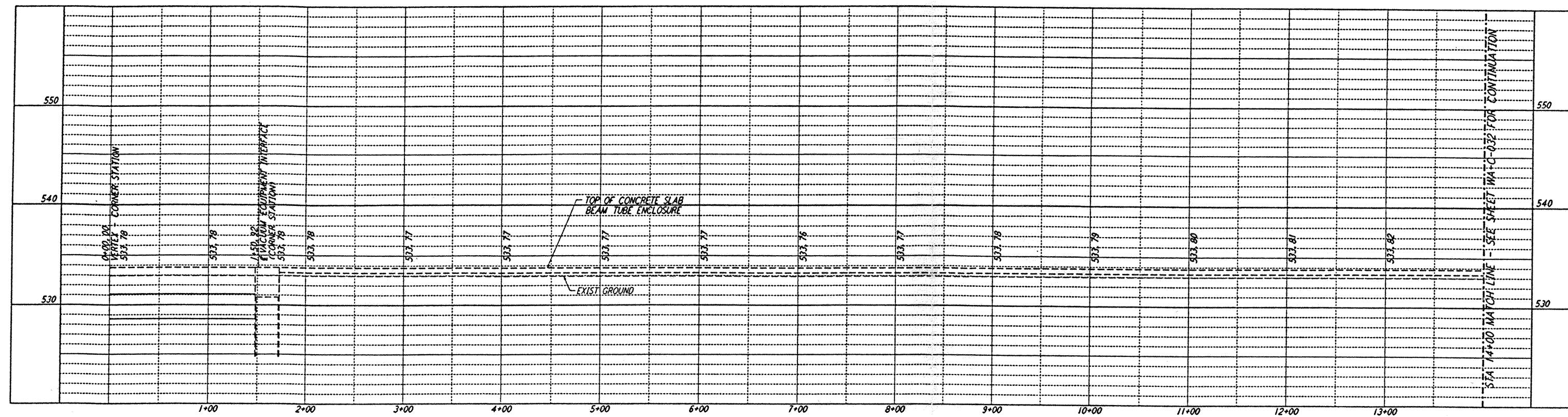
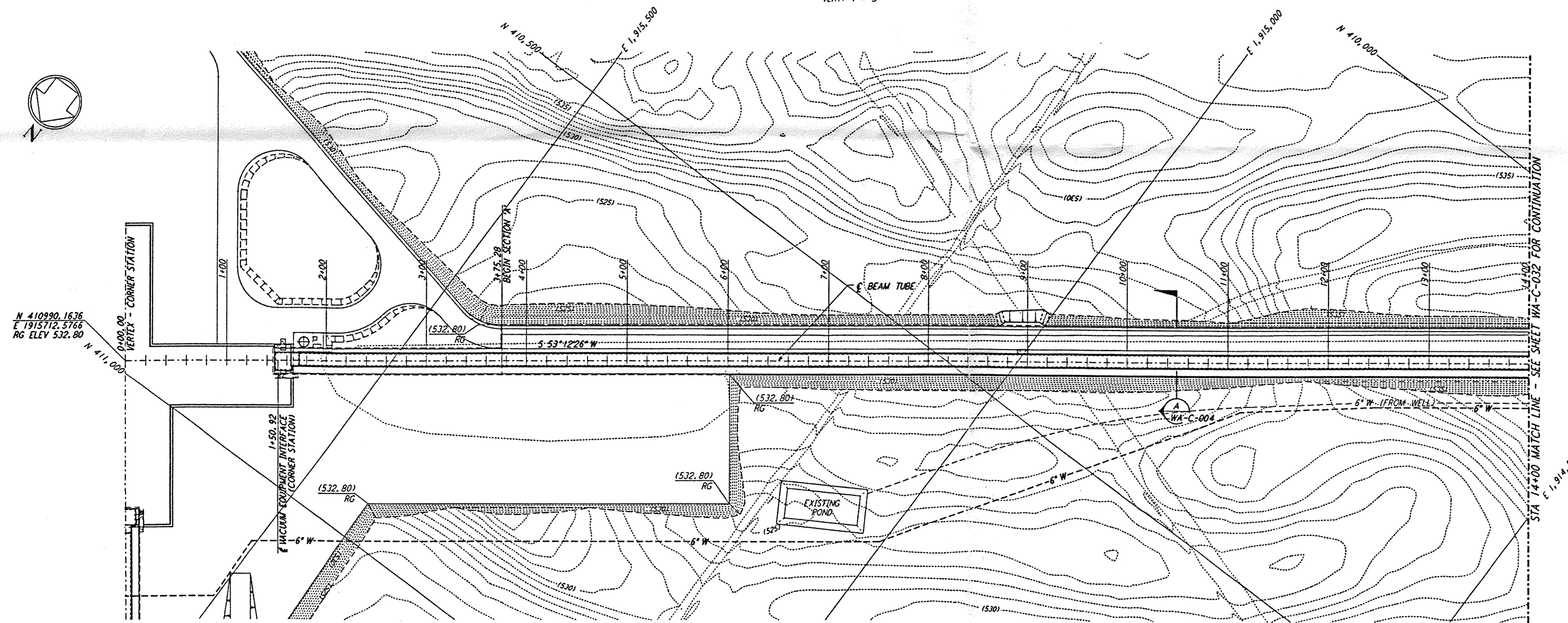


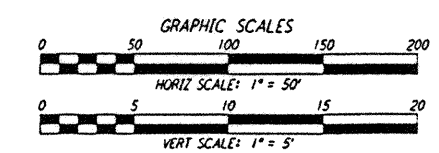
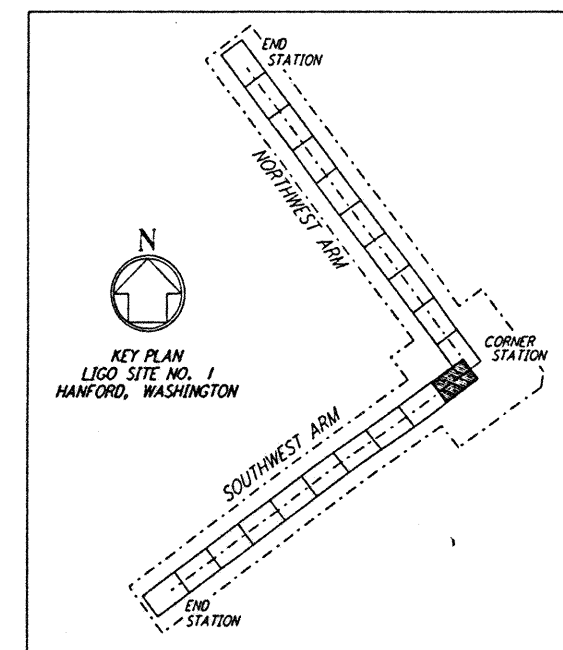
NOTES:
1. SEE SHEET WA-C-002 FOR GENERAL NOTES, LEGEND AND ABBREVIATIONS.



PROFILE
SCALE: HORIZ: 1" = 50'
VERT: 1" = 5'



PLAN
SCALE: 1" = 50'



This document and the design it covers are the property of PARSONS. They are loaned only with the borrower's expressed written agreement that they will not be reproduced, copied, loaned, exhibited, or used in any other way, except by written consent from PARSONS to the borrower.

This document and the design it covers are the property of PARSONS. They are loaned only with the borrower's expressed written agreement that they will not be reproduced, copied, loaned, exhibited, or used in any other way, except by written consent from PARSONS to the borrower.

NOTE:
SEE SHEET WA-C-005 FOR SITE PLAN,
SHEET WA-C-001 FOR GRADING PLAN,
AND SHEET WA-C-003 FOR UTILITY PLAN
AT CORNER STATION.

NOTE:
SEE SHEET WA-C-505 FOR SITE PLAN,
SHEET WA-C-507 FOR GRADING PLAN,
AND SHEET WA-C-509 FOR UTILITY PLAN
AT CORNER STATION.

NO.	DATE	BY	CHKD	ENGR	PROJ	DESCRIPTION
B	4/19/96	WRB				FINAL DESIGN REVIEW & BID
A	10/31/95	WRB				PRELIMINARY DESIGN REVIEW

DRAWN	WRB
CHECKED	
ENGINEER	
PROJ	

PARSONS
100 WEST WALNUT STREET
PASADENA, CALIFORNIA

LIGO
CALIFORNIA INSTITUTE OF TECHNOLOGY
MASSACHUSETTS INSTITUTE OF TECHNOLOGY

LASER INTERFEROMETER
GRAVITATIONAL-WAVE OBSERVATORY
SITE NO. 1 - HANFORD, WASHINGTON

CIVIL
SOUTHWEST ARM
PLAN AND PROFILE
STA 0+00 TO STA 14+00

AS NOTED
PP150969
8094

WA-C-031

L160-D960218-B-D1