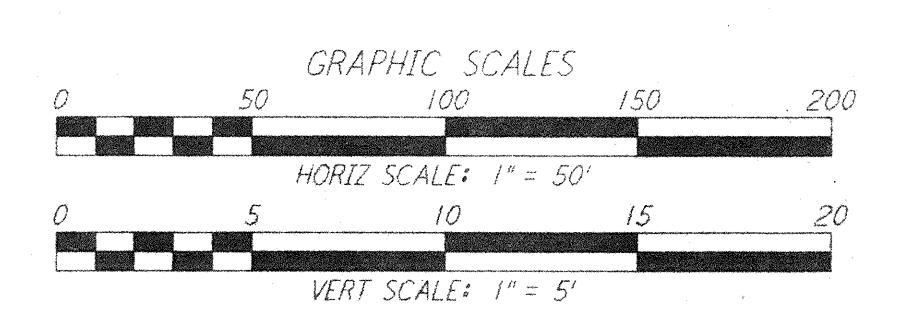
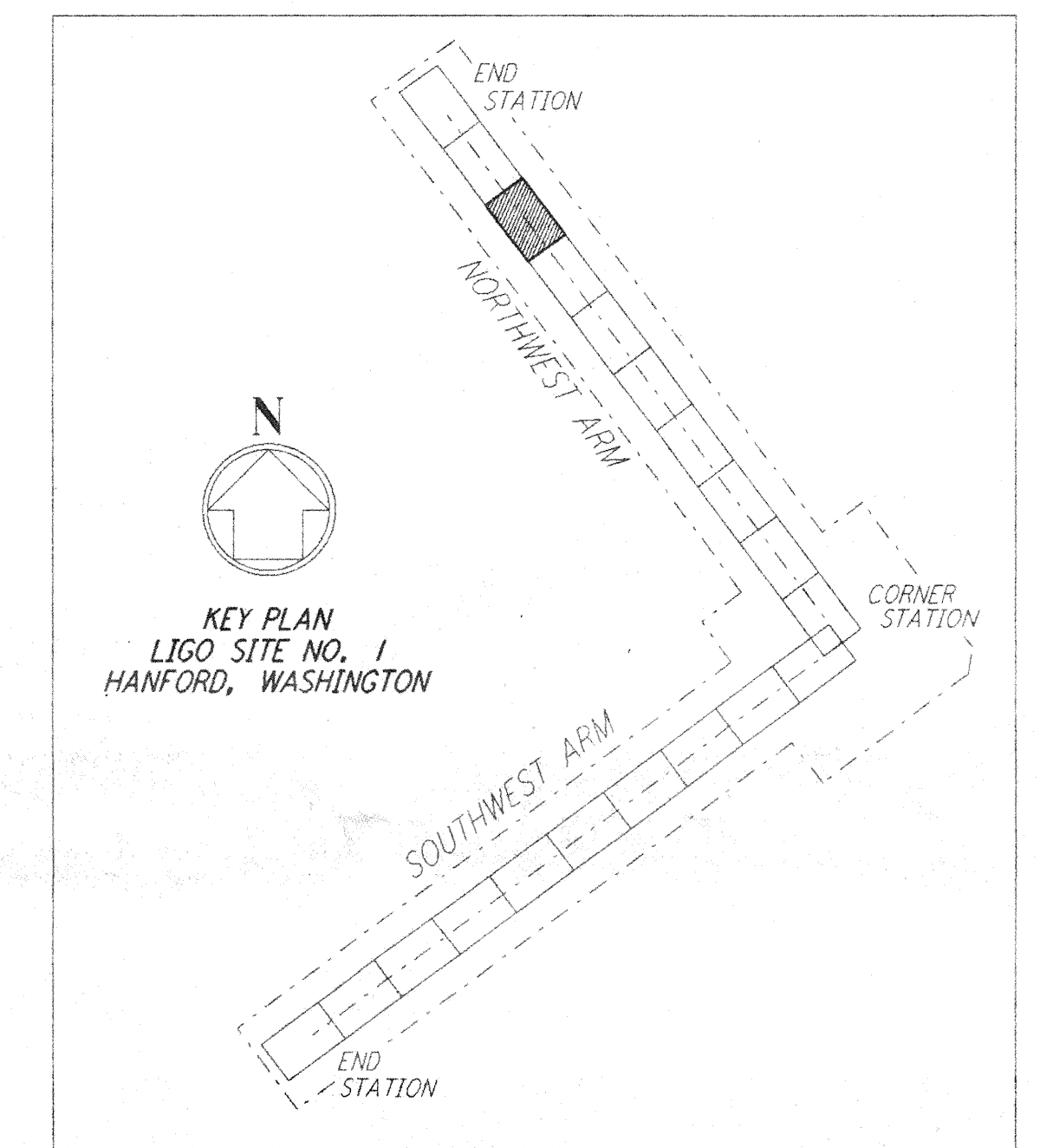
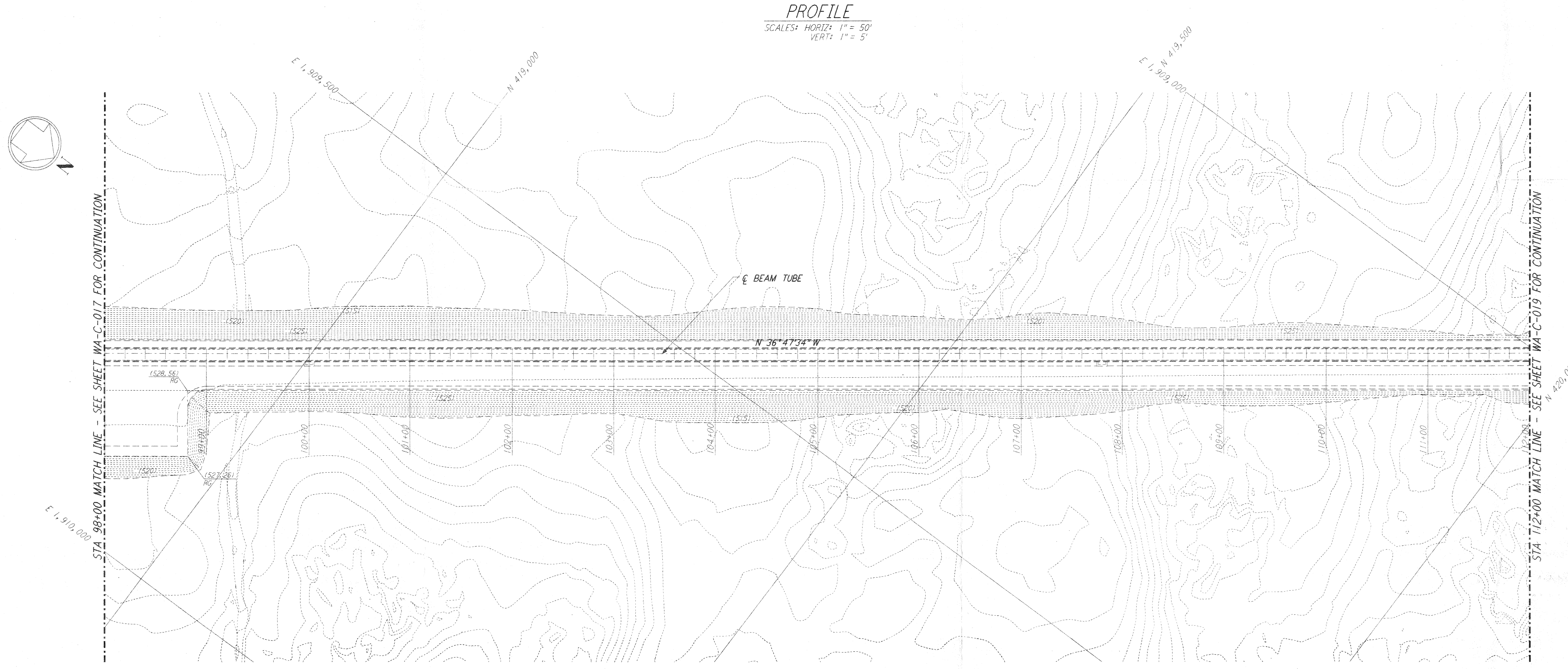
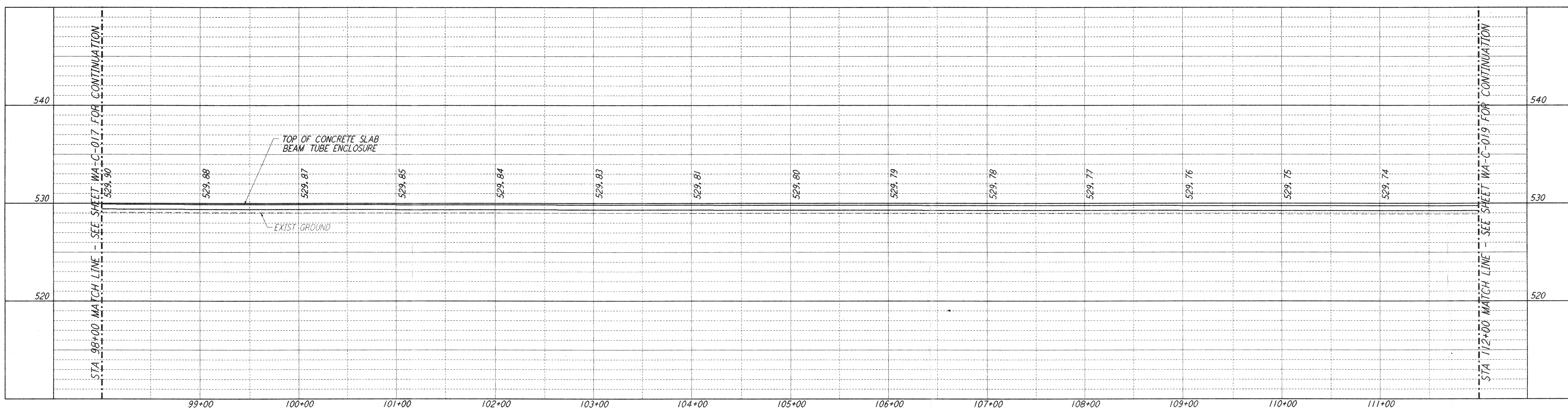


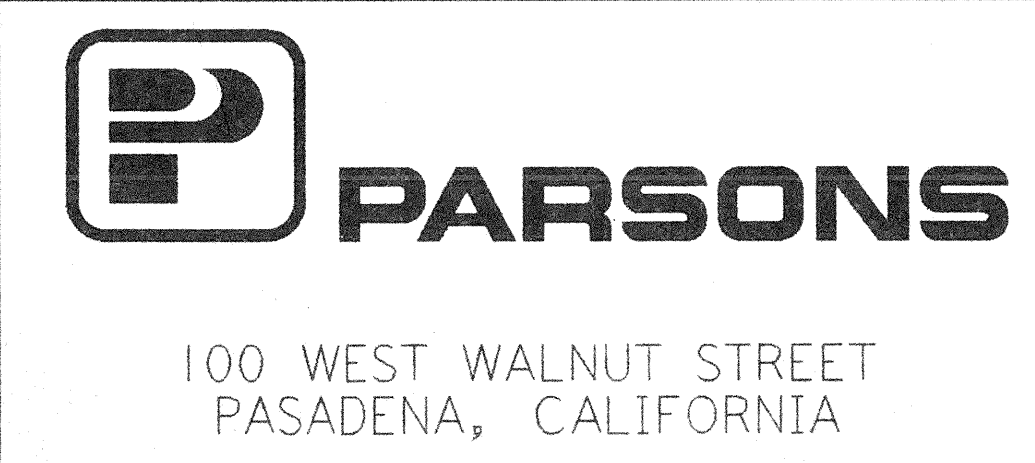
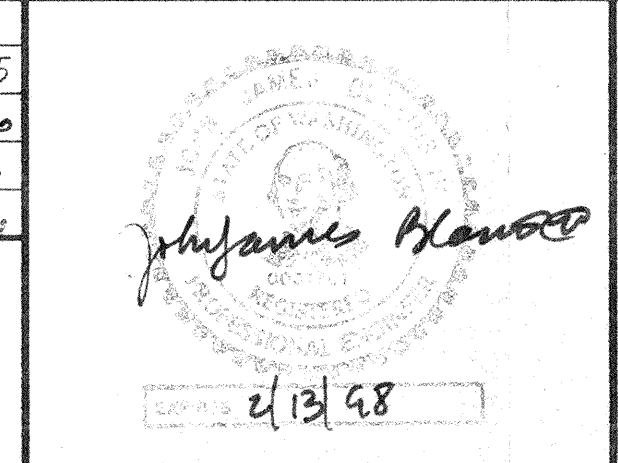
**NOTES:**  
 1. SEE SHEET WA-C-002 FOR GENERAL NOTES, LEGEND AND ABBREVIATIONS.



This document and the design it covers are the property of PARSONS. They are loaned only with the borrower's expressed written agreement that they will not be reproduced, copied, loaned, exhibited, or used in any other way, except by written consent from PARSONS to the borrower.

NO.	DATE	BY	CHKD	ENGR	PROJ	DESCRIPTION

FOR CONSTRUCTION	
DRAWN	WRB 9/28/95
CHECKED	7/7/96
ENGINEER	7/7/96
PROJ	7/9/96



**LASER INTERFEROMETER GRAVITATIONAL-WAVE OBSERVATORY SITE NO. 1 - HANFORD, WASHINGTON**

**CIVIL NORTHWEST ARM PLAN AND PROFILE STA 98+00 TO STA 112+00**

AS NOTED PP150969 8094

**WA - C - 018**

LIGOD960209-00-0