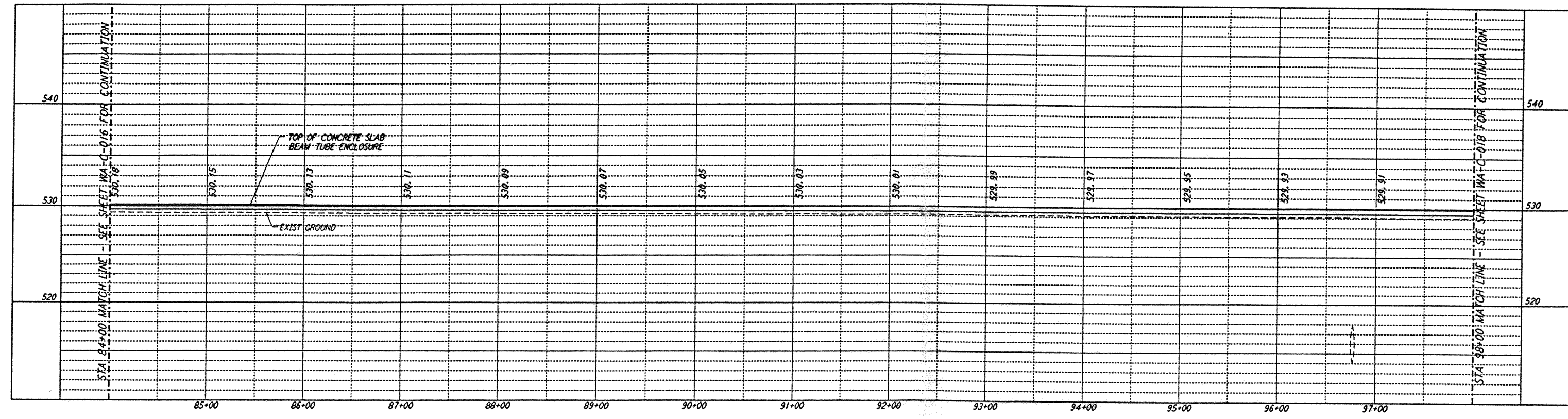
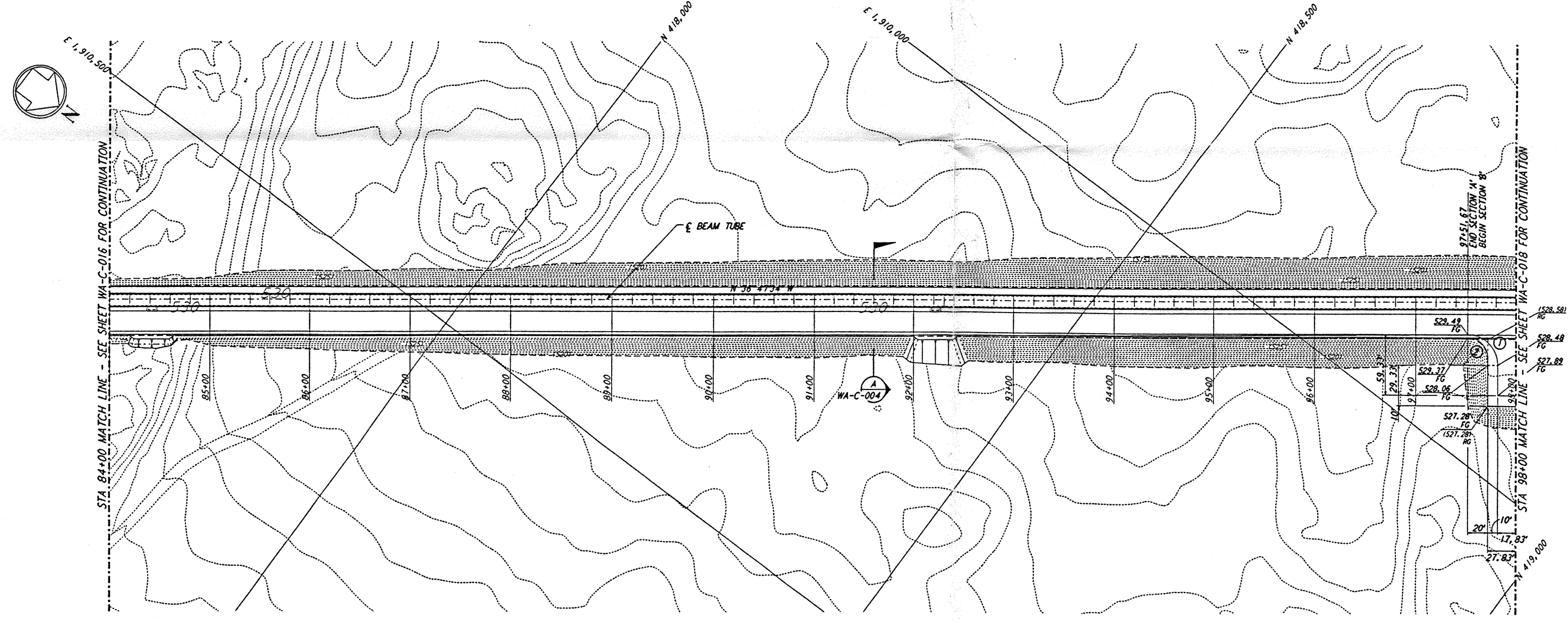


**NOTES:**  
 1. SEE SHEET WA-C-002 FOR GENERAL NOTES, LEGEND AND ABBREVIATIONS.

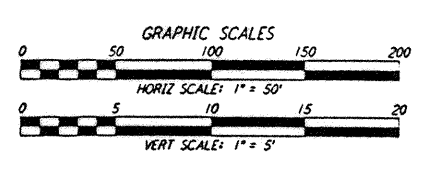
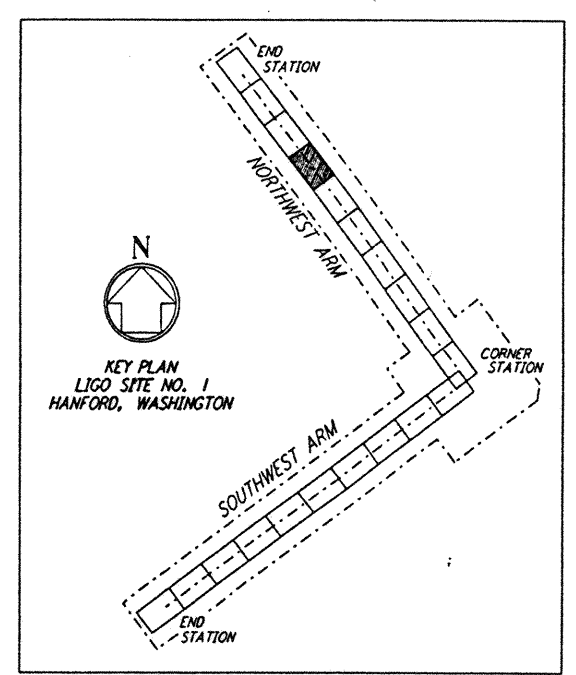


**PROFILE**  
 SCALES: HORIZ: 1" = 50'  
 VERT: 1" = 5'



**PLAN**  
 SCALE: 1" = 50'

CURVE DATA				
Δ	RADIUS	LENGTH	TANGENT	
1	90°00'00"	30'	47.12'	30.00'
2	90°00'00"	20'	31.42'	20.00'



not be reproduced, copied, loaned, exhibited, or used in any other way, except by written consent from **PARSONS** to the borrower.

This document and the design it covers are the property of **PARSONS**. They are loaned only with the borrower's expressed written agreement that they will

I:\PLOT\ZERRILL\1746\_511.PLOT - J:\L1\3\SUB\REV\SCALE\B\M1746

NO.	DATE	BY	CHKD	ENGR	PROJ	DESCRIPTION
B	4/19/96	WRB	MM	SM	JYP	FINAL DESIGN REVIEW & BID
A	10/31/95	WRB	VDM			PRELIMINARY DESIGN REVIEW

DRAWN	WRB
CHECKED	
ENGINEER	
PROJ	

**PARSONS**  
 100 WEST WALNUT STREET  
 PASADENA, CALIFORNIA

**LIGO**  
 CALIFORNIA INSTITUTE OF TECHNOLOGY  
 MASSACHUSETTS INSTITUTE OF TECHNOLOGY

LASER INTERFEROMETER  
 GRAVITATIONAL-WAVE OBSERVATORY  
 SITE NO. 1 - HANFORD, WASHINGTON

TITLE	CIVIL NORTHWEST ARM PLAN AND PROFILE STA 84+00 TO STA 98+00	SCALE	AS NOTED	CONTRACT NUMBER	PPI50969	PROJECT NUMBER	8094
SHEET NUMBER	<b>WA-C-017</b>		REVISION				

LIGO-D860208-B-171