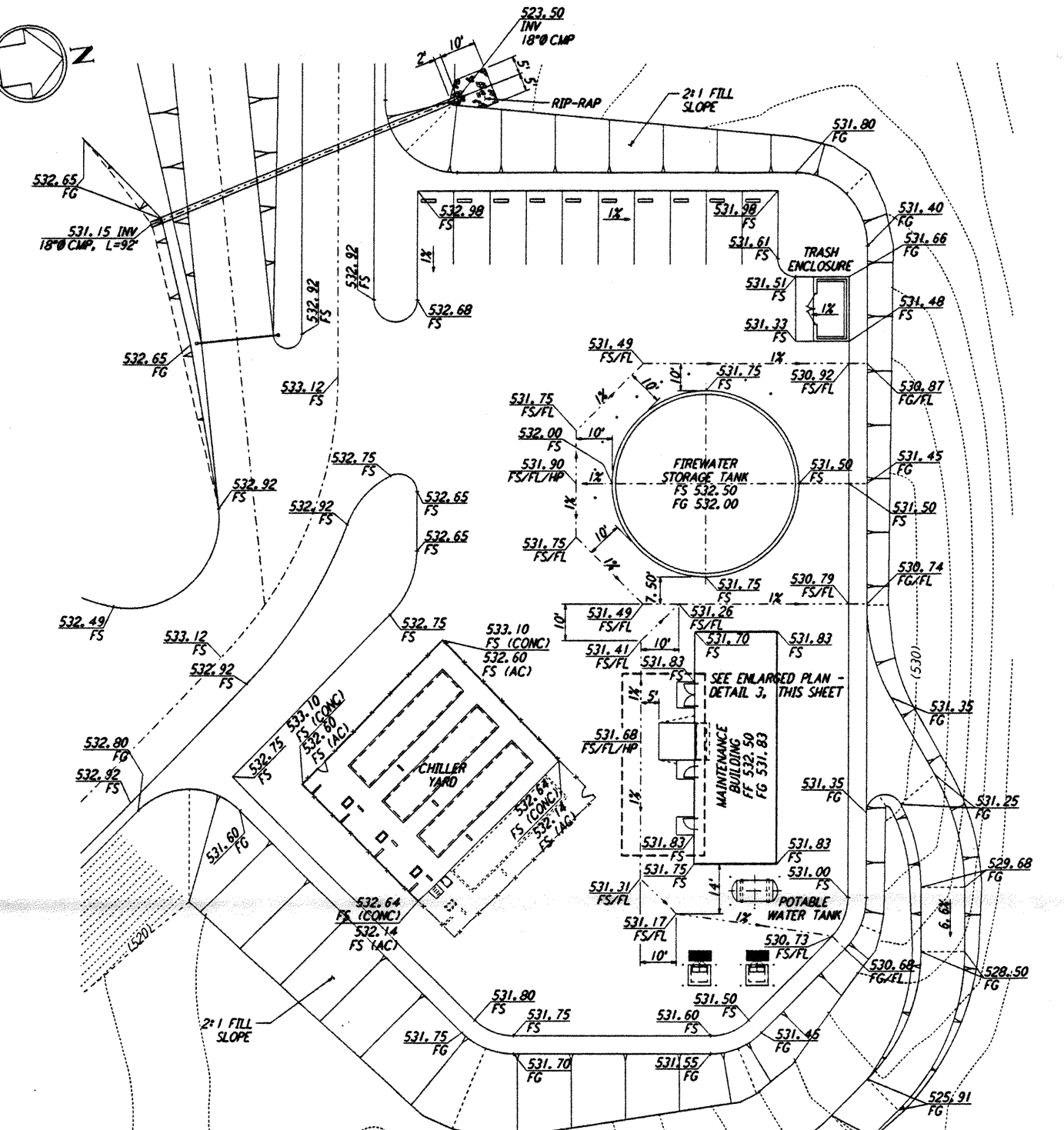
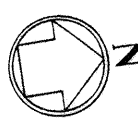
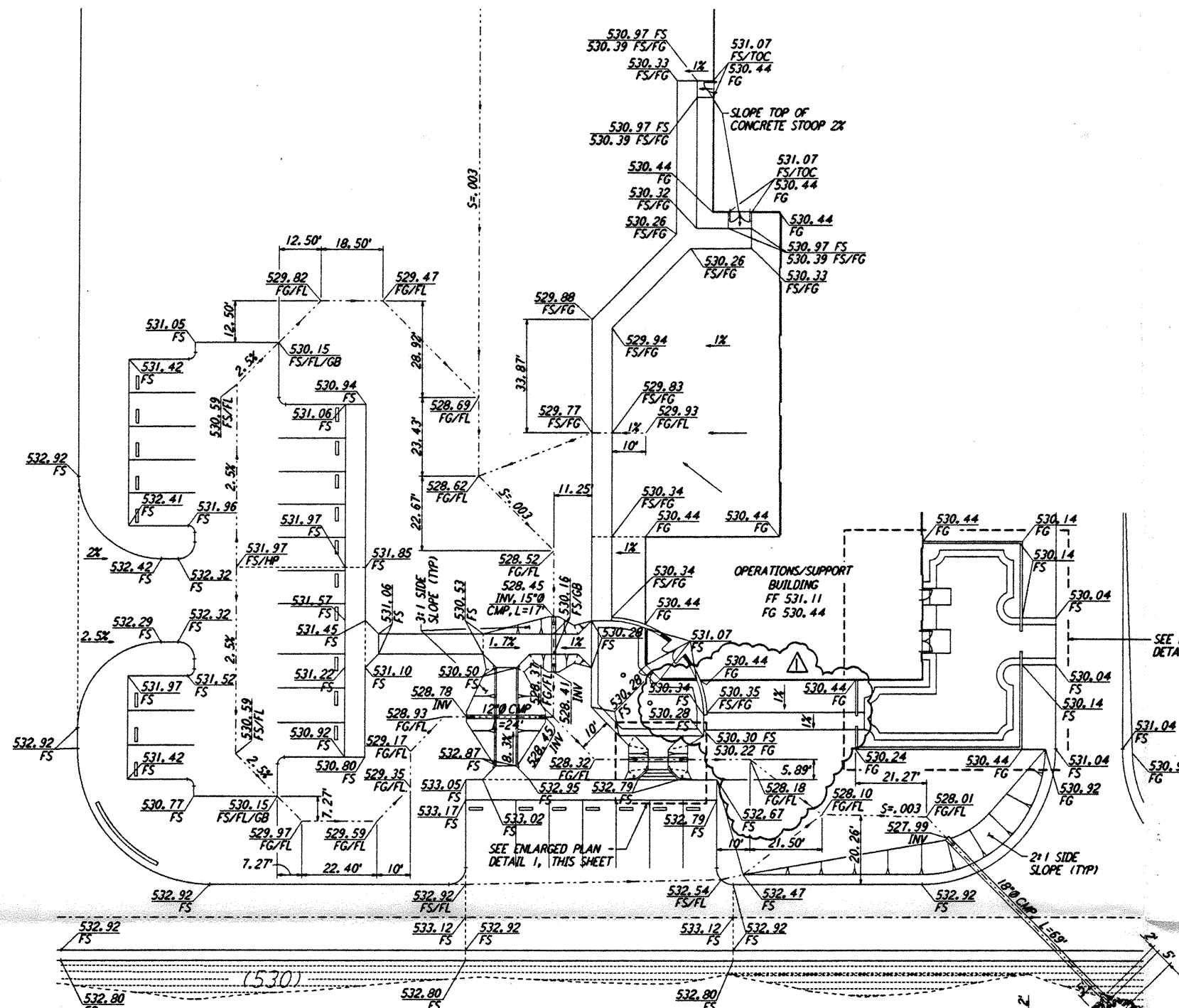
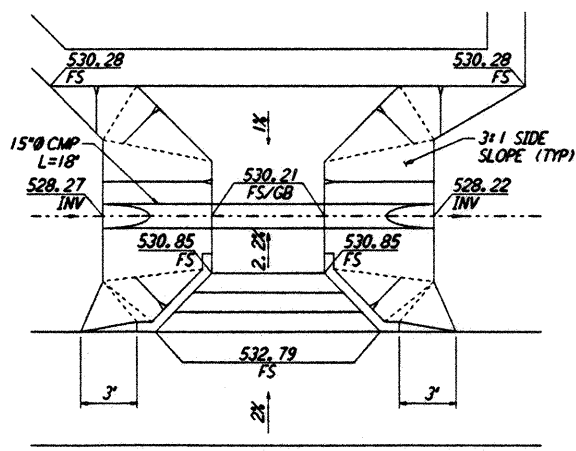


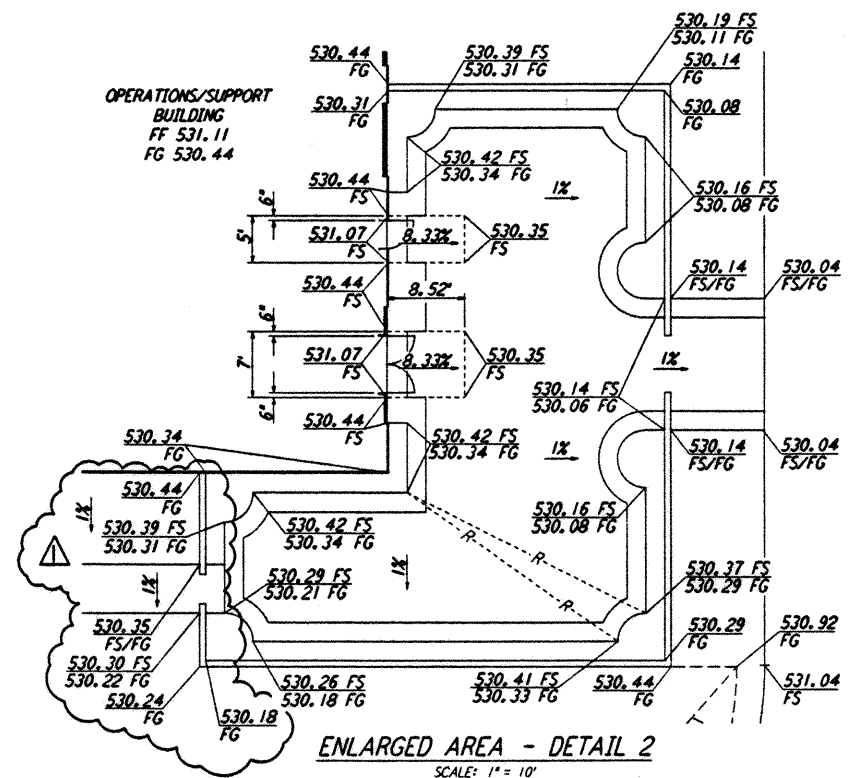
NOTES:
 1. SEE SHEET WA-C-002 FOR GENERAL NOTES, LEGEND AND ABBREVIATIONS.



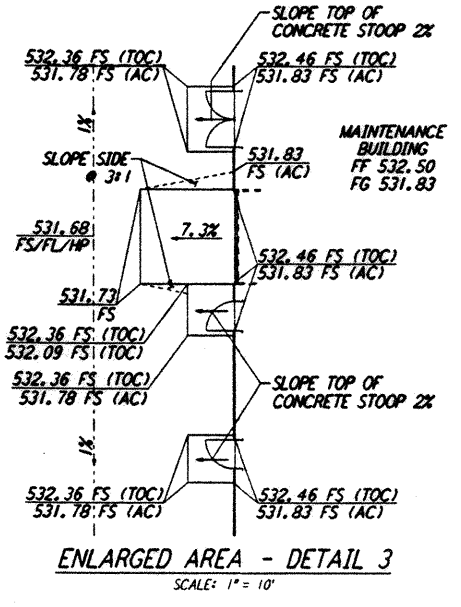
ENLARGED AREA - BUILDING ENTRANCE
 SCALE: 1" = 20'



ENLARGED AREA - DETAIL 1
 SCALE: 1" = 5'

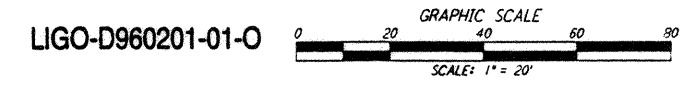


ENLARGED AREA - DETAIL 2
 SCALE: 1" = 10'



ENLARGED AREA - DETAIL 3
 SCALE: 1" = 10'

ENLARGED AREA - MAINTENANCE YARD
 SCALE: 1" = 20'



This document and the design it covers are the property of PARSONS. They are loaned only with the borrower's expressed written agreement that they will not be reproduced, copied, loaned, exhibited, or used in any other way, except by written consent from PARSONS to the borrower.

FILED: G:\BRIAN\1771_517\MISC_JET\13\IMAGES\MISC\ALB007P1

NO.	DATE	BY	CHKD	ENGR	PROJ	DESCRIPTION
1	2-28-97	WRB	L			ADDED WALK/WALL OPENING, REVISED GRADING

DESIGNED FOR CONSTRUCTION	
DRAWN	WRB 8/28/95
CHECKED	ML 7/9/96
ENGINEER	JB 7/9/96
PROJ	MDW 7/9/96

John James
 2/15/97

PARSONS
 100 WEST WALNUT STREET
 PASADENA, CALIFORNIA

LIGO
 CALIFORNIA INSTITUTE OF TECHNOLOGY
 MASSACHUSETTS INSTITUTE OF TECHNOLOGY

LASER INTERFEROMETER
 GRAVITATIONAL-WAVE OBSERVATORY
 SITE NO. 1 - HANFORD, WASHINGTON

CIVIL
 CORNER STATION
 GRADING PLAN
 ENLARGED PLANS

AS NOTED PPI50969 8094
WA-C-008