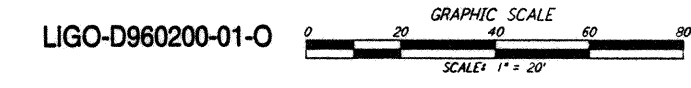
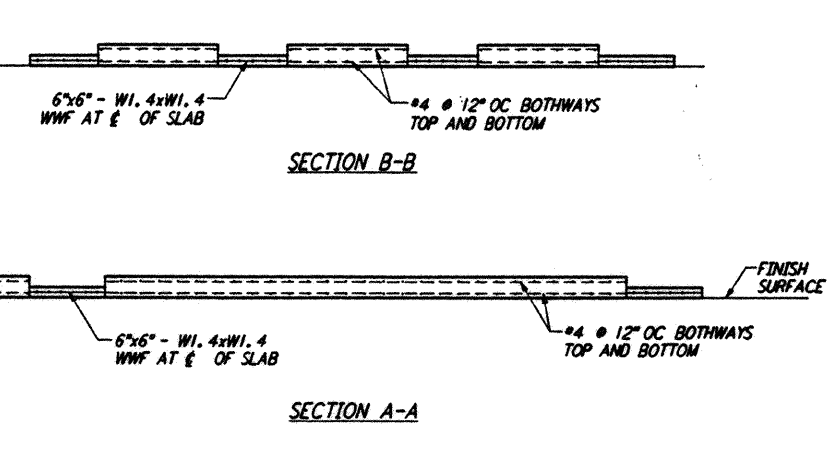
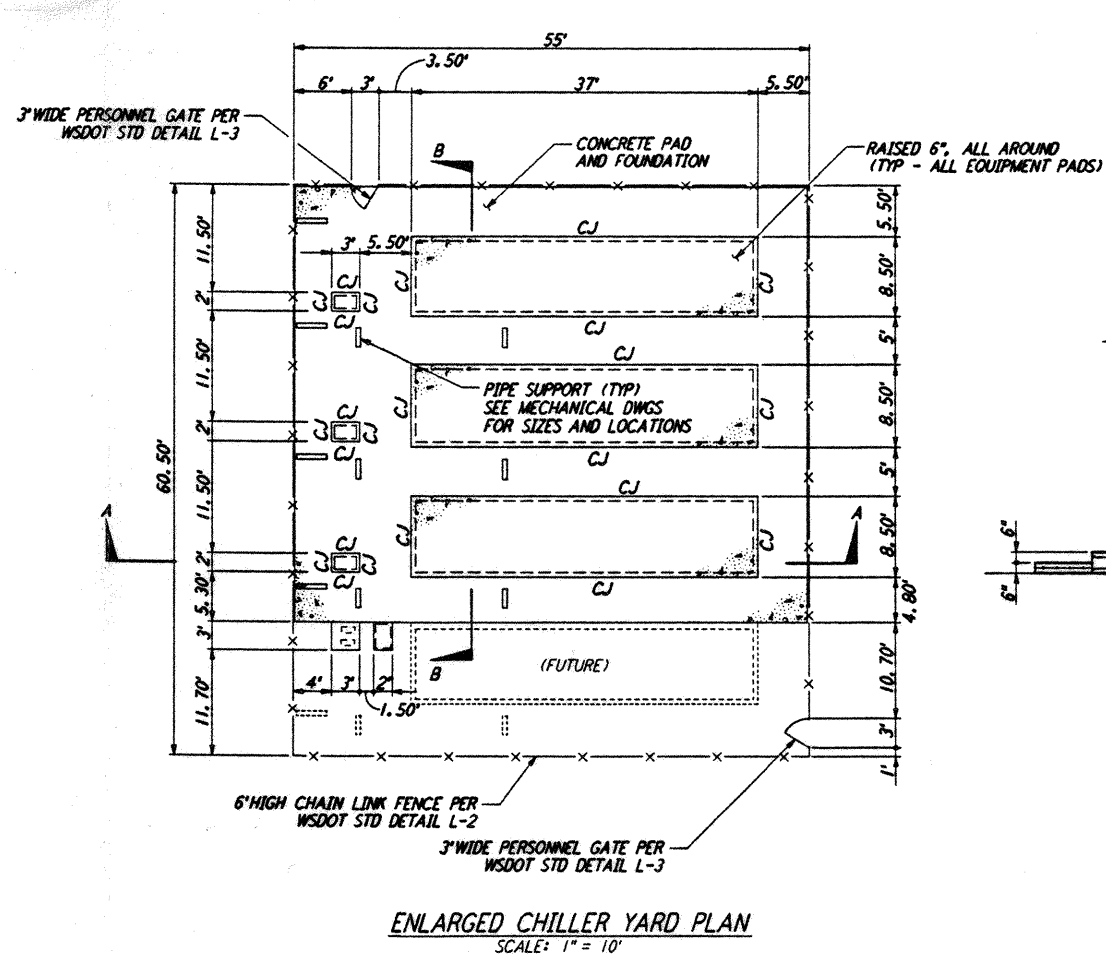
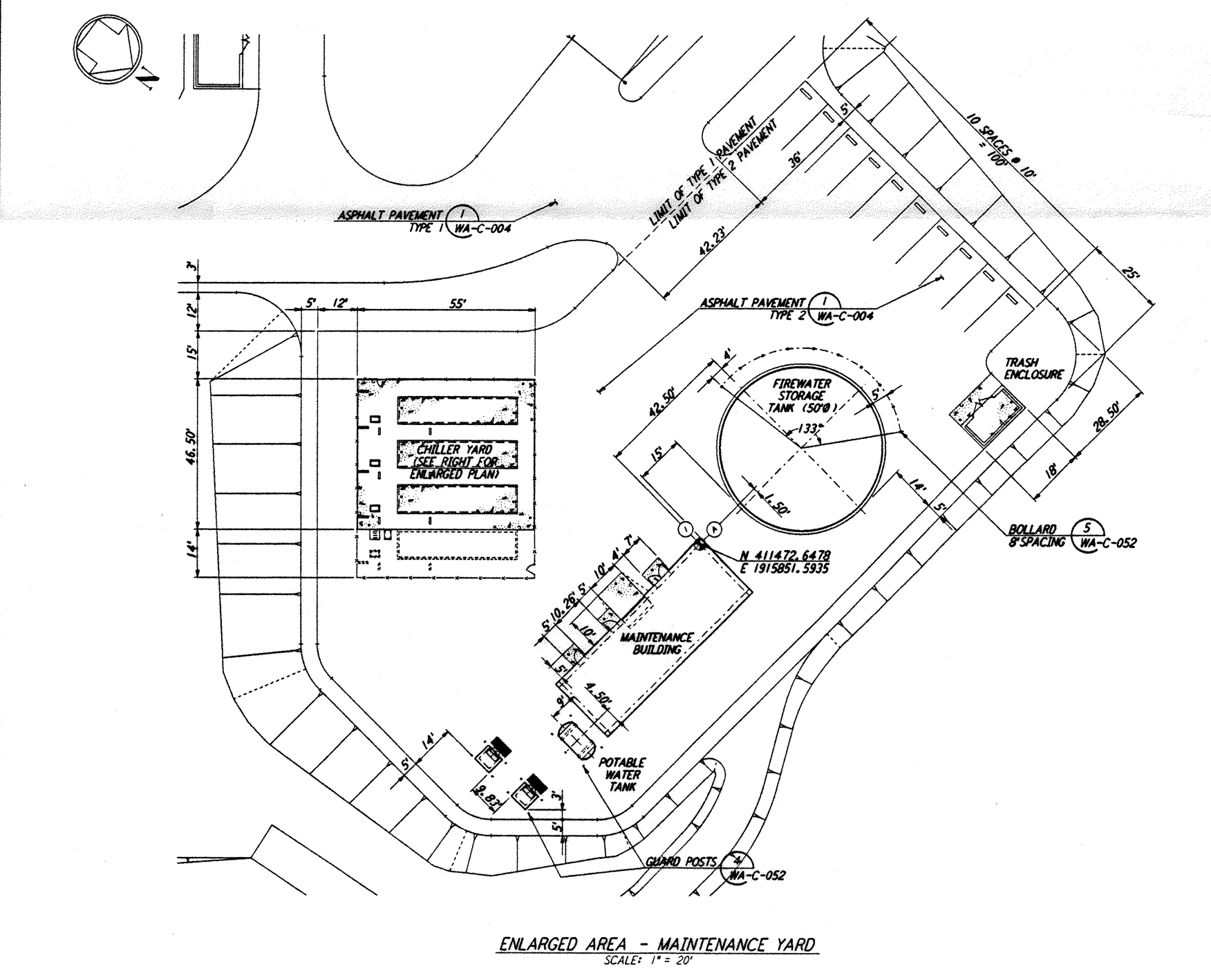
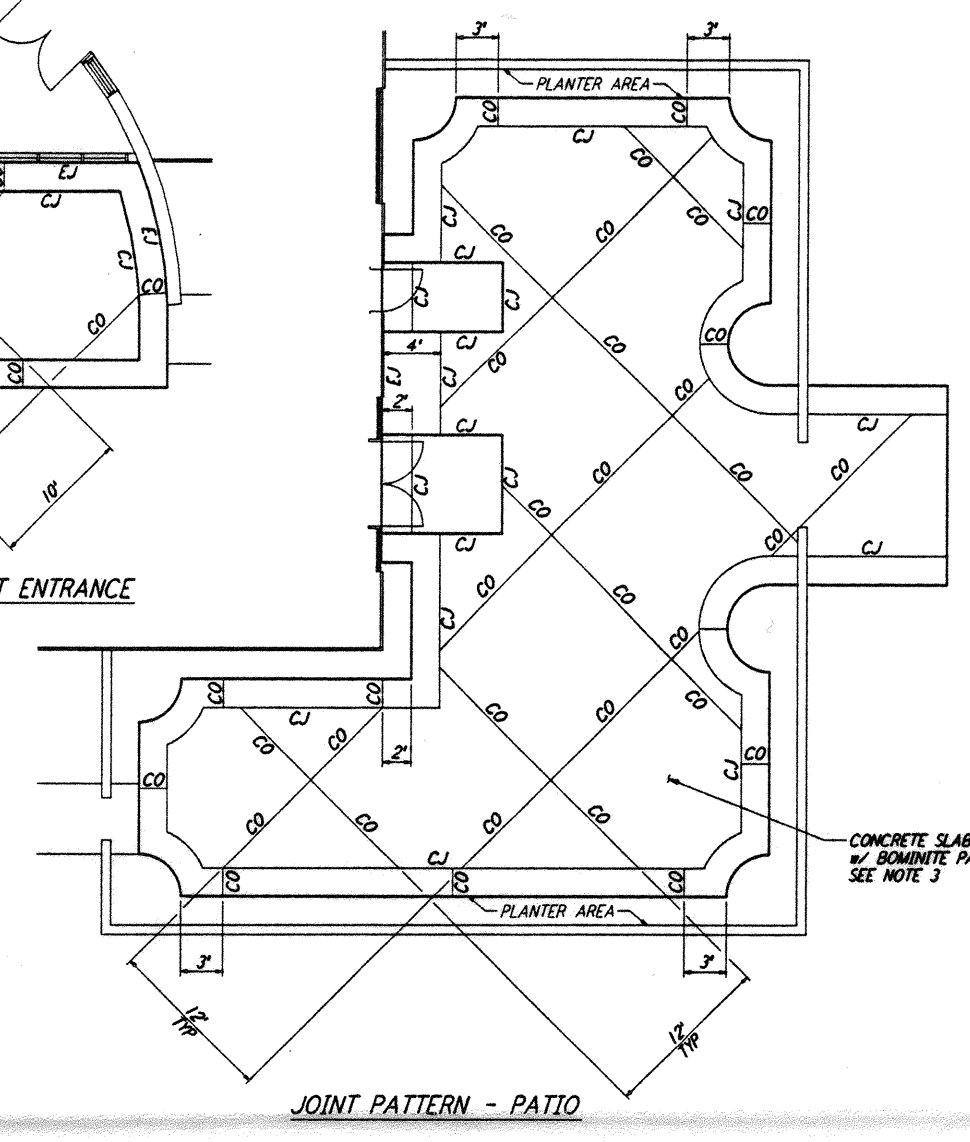
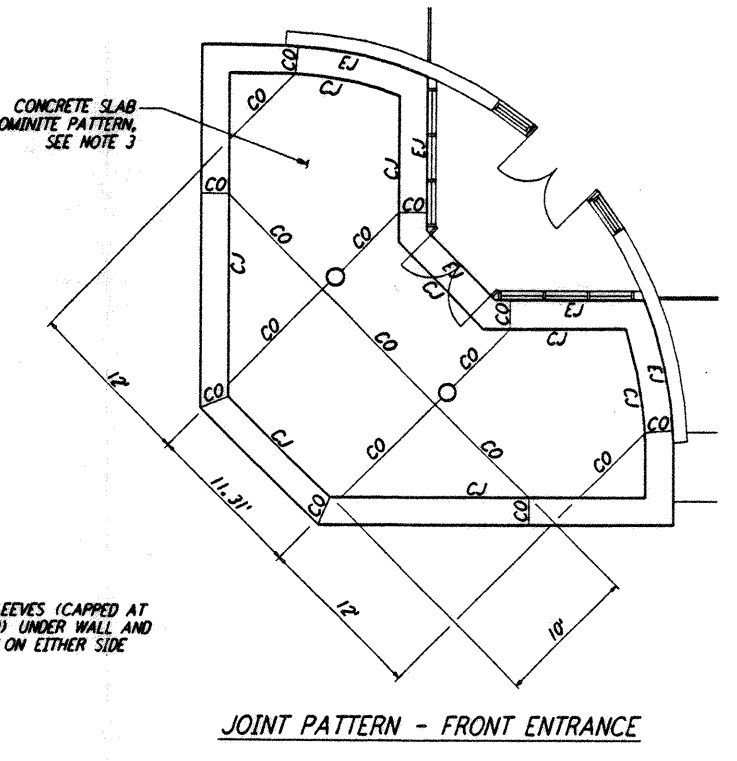
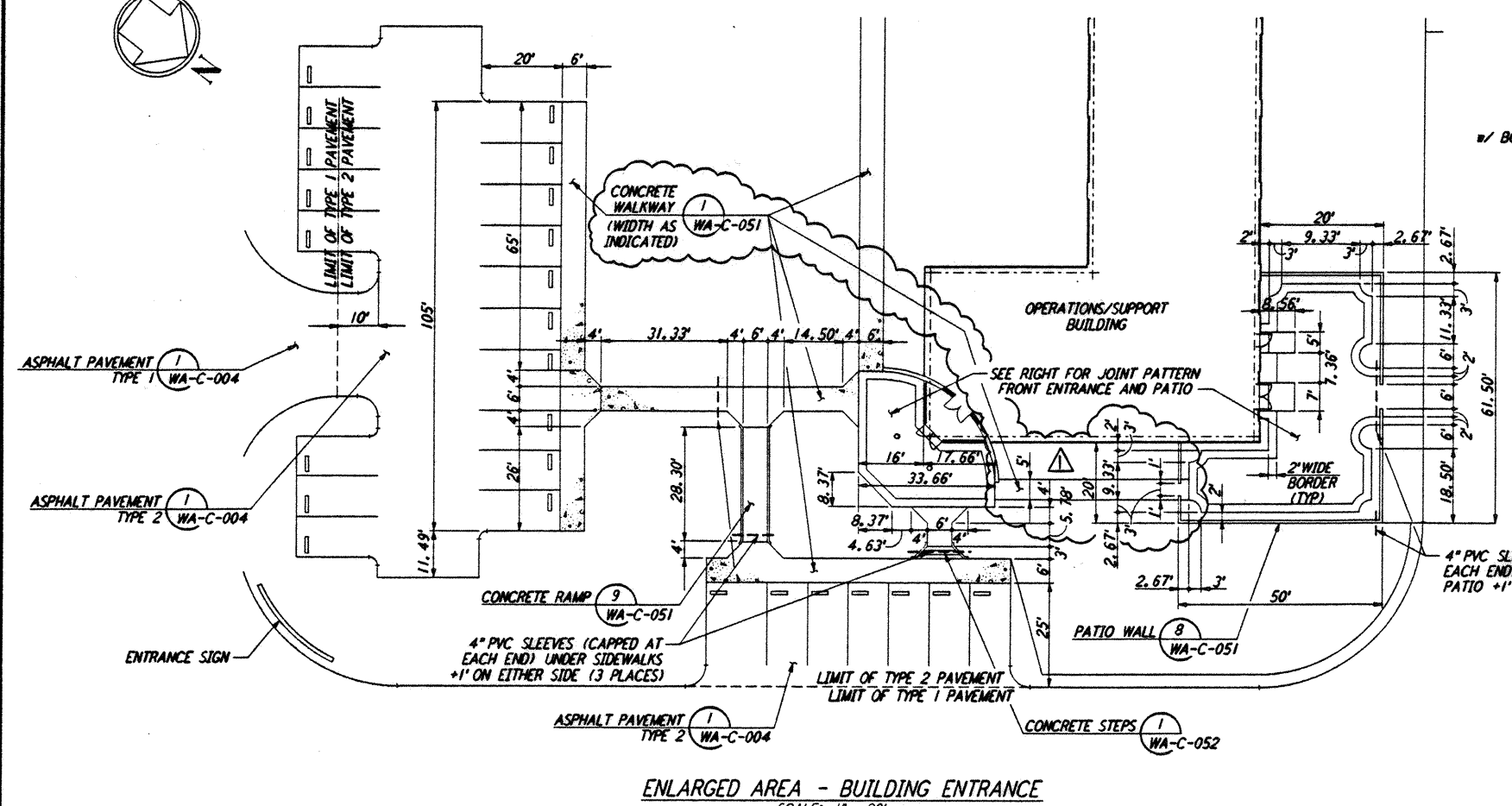


- NOTES:**
1. SEE SHEET WA-C-002 FOR GENERAL NOTES, LEGEND AND ABBREVIATIONS.
 2. SEE SHEET WA-C-005 FOR CURVE DATA.
 3. BOMINITE PATTERN AND COLOR FOR FRONT ENTRANCE AND PATIO SHALL BE SUBMITTED BY CONTRACTOR FOR CLIENT APPROVAL.



This document and the design it covers are the property of PARSONS. They are loaned only with the borrower's expressed written agreement that they will not be reproduced, copied, loaned, exhibited, or used in any other way, except by written consent from PARSONS to the borrower.

This document and the design it covers are the property of PARSONS. They are loaned only with the borrower's expressed written agreement that they will not be reproduced, copied, loaned, exhibited, or used in any other way, except by written consent from PARSONS to the borrower.

PT 1180 41 9/20/95 1771 5/7/2002 J:\PL\US\ME\UES\17862\LE\ENR\PP

PT 1180 41 9/20/95 1771 5/7/2002 J:\PL\US\ME\UES\17862\LE\ENR\PP

NO.	DATE	BY	CHKD	ENGR	PROJ	DESCRIPTION
1	2-28-97	WRB	LL			ADDED WALK/WALL OPENING, REVISED GRADING

NO.	DATE	BY	CHKD	ENGR	PROJ	DESCRIPTION
1	2-28-97	WRB	LL			ADDED WALK/WALL OPENING, REVISED GRADING

Johnnie Alexander
 2/28/97

PARSONS
 100 WEST WALNUT STREET
 PASADENA, CALIFORNIA

LIGO
 CALIFORNIA INSTITUTE OF TECHNOLOGY
 MASSACHUSETTS INSTITUTE OF TECHNOLOGY

LASER INTERFEROMETER
 GRAVITATIONAL-WAVE OBSERVATORY
 SITE NO. 1 - HANFORD, WASHINGTON

CIVIL
 CORNER STATION
 PLOT PLAN
 ENLARGED PLANS

AS NOTED PP150969 8094
WA-C-006