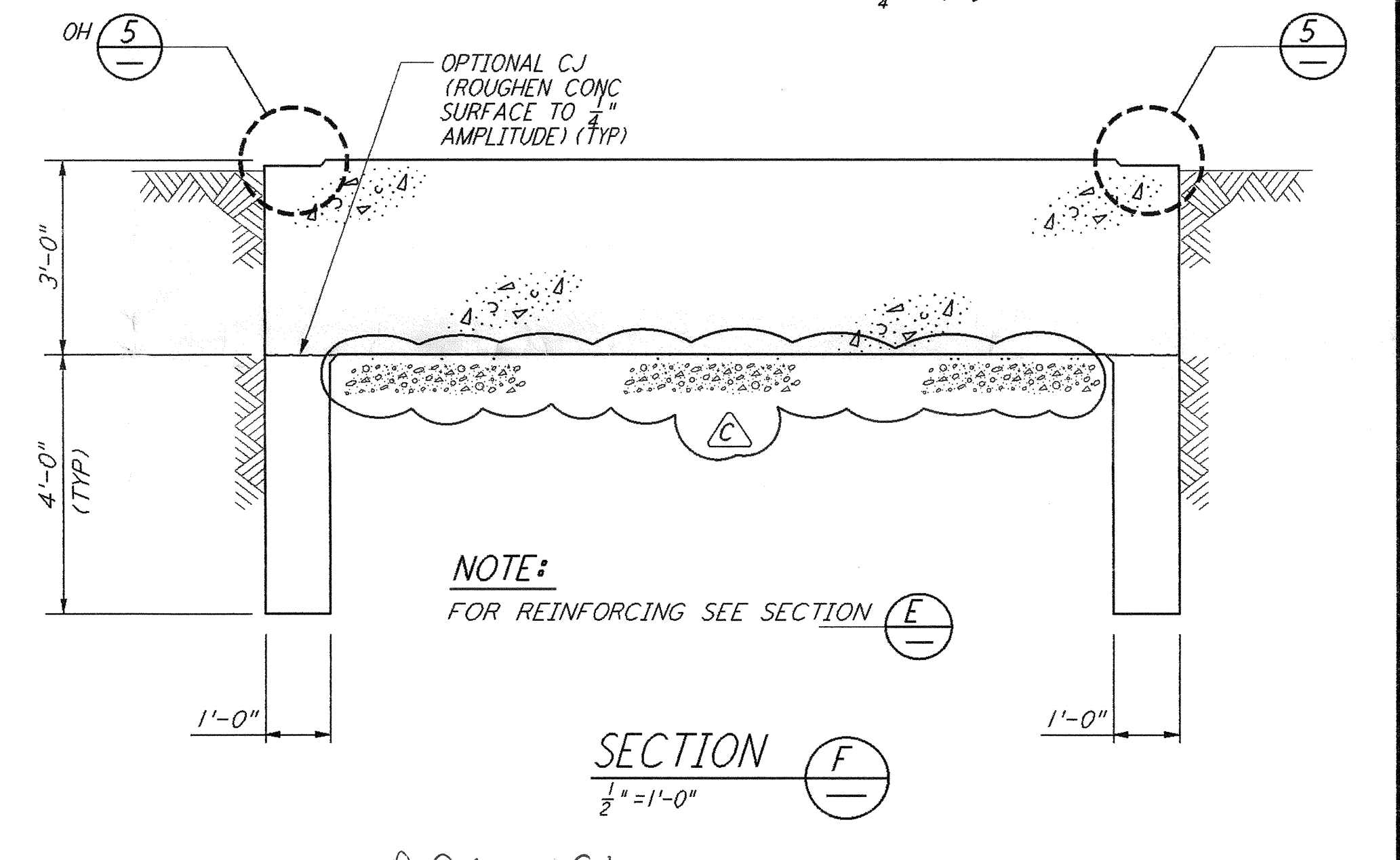
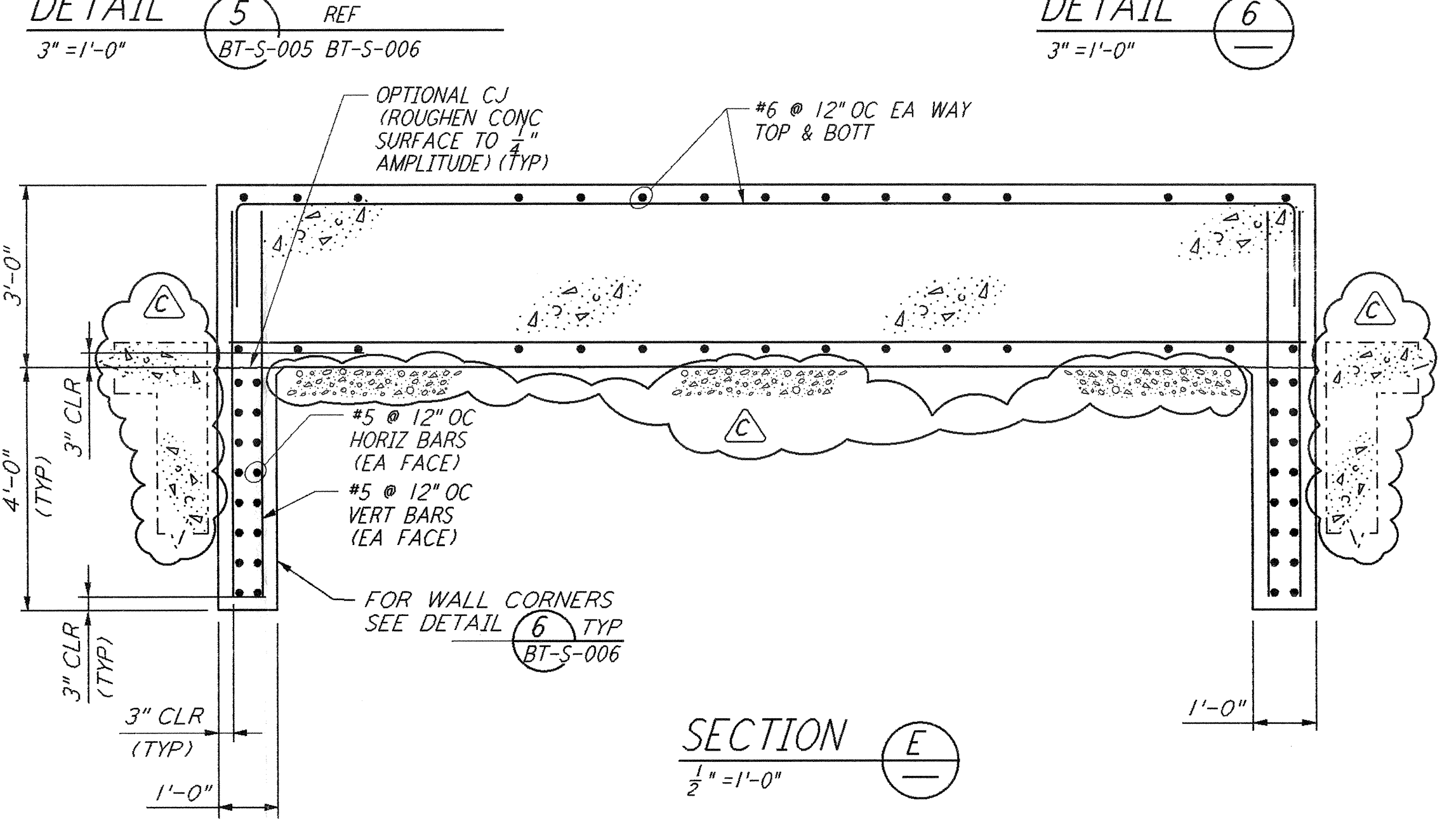
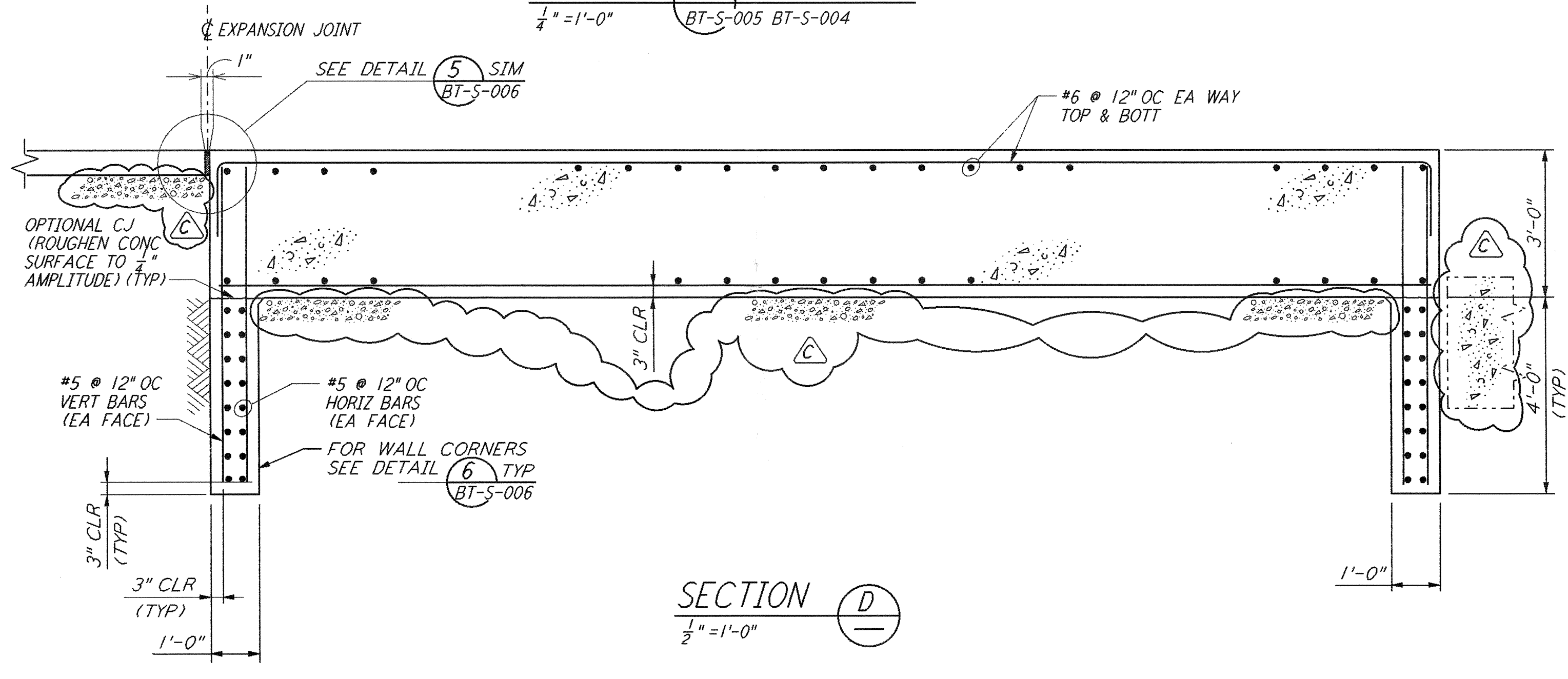
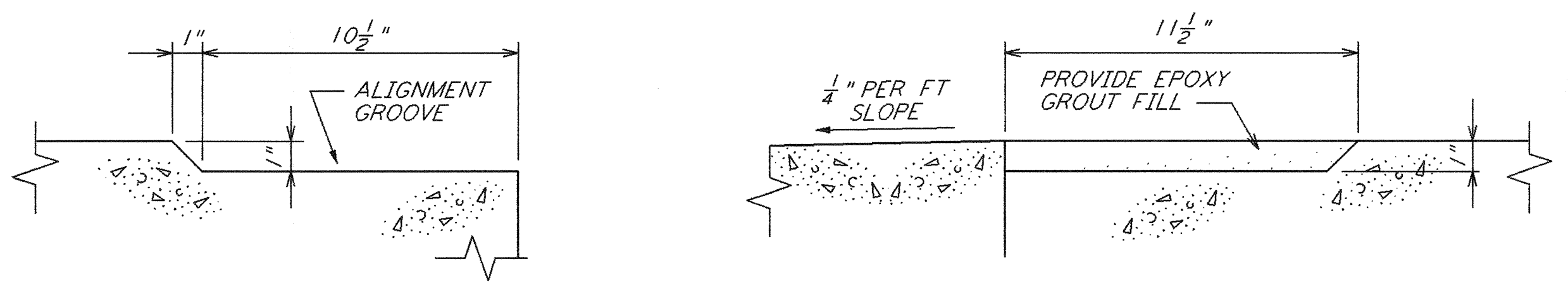
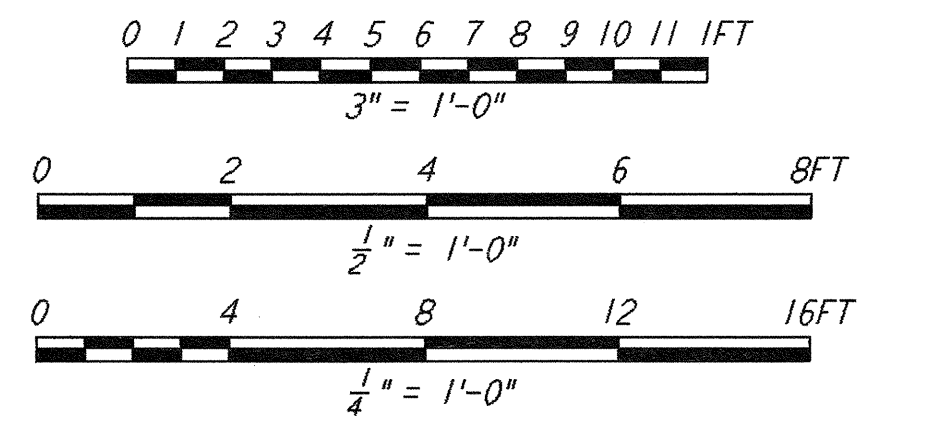


**NOTE:**  
 1. FOR GENERAL NOTES, ABBREVIATIONS AND LEGEND SEE DRAWING BT-S-001.



**NOTE:**  
 FOR REINFORCING SEE SECTION E



This document and the design it covers are the property of PARSONS. They are loaned only with the borrower's expressed written agreement that they will not be reproduced, copied, loaned, exhibited, or used in any other way, except by written consent from PARSONS to the borrower.

This document and the design it covers are the property of PARSONS. They are loaned only with the borrower's expressed written agreement that they will not be reproduced, copied, loaned, exhibited, or used in any other way, except by written consent from PARSONS to the borrower.

NO.	DATE	BY	CHKD	ENGR	PROJ	DESCRIPTION
C	12-18-95	MCS				BID AMENDMENT 1
B	11-21-95	MCS	RM	FJD	MDW	ISSUED FOR BID
A	10-03-95	MCS	RM	FJD	MDW	DRAFT FINAL DESIGN REPORT

NO.	DATE	BY	CHKD	ENGR	PROJ	DESCRIPTION
C	12-18-95	MCS				BID AMENDMENT 1
B	11-21-95	MCS	RM	FJD	MDW	ISSUED FOR BID
A	10-03-95	MCS	RM	FJD	MDW	DRAFT FINAL DESIGN REPORT

DRAWN	SH
CHECKED	
ENGINEER	
PROJ	

**PARSONS**

100 WEST WALNUT STREET  
 PASADENA, CALIFORNIA

**LIGO**

CALIFORNIA INSTITUTE OF TECHNOLOGY  
 MASSACHUSETTS INSTITUTE OF TECHNOLOGY

0960191-C-0

LASER INTERFEROMETER  
 GRAVITATIONAL-WAVE OBSERVATORY  
 BTE SITEWORK & FABRICATION - HANFORD, WA

TITLE	SCALE	CONTRACT NUMBER	PROJECT NUMBER
BEAM TUBE ENCLOSURE SECTIONS & DETAILS SHEET 1	AS NOTED	PP150969	8094
SHEET NUMBER		REVISIONS	
<b>BT-S-005</b>			