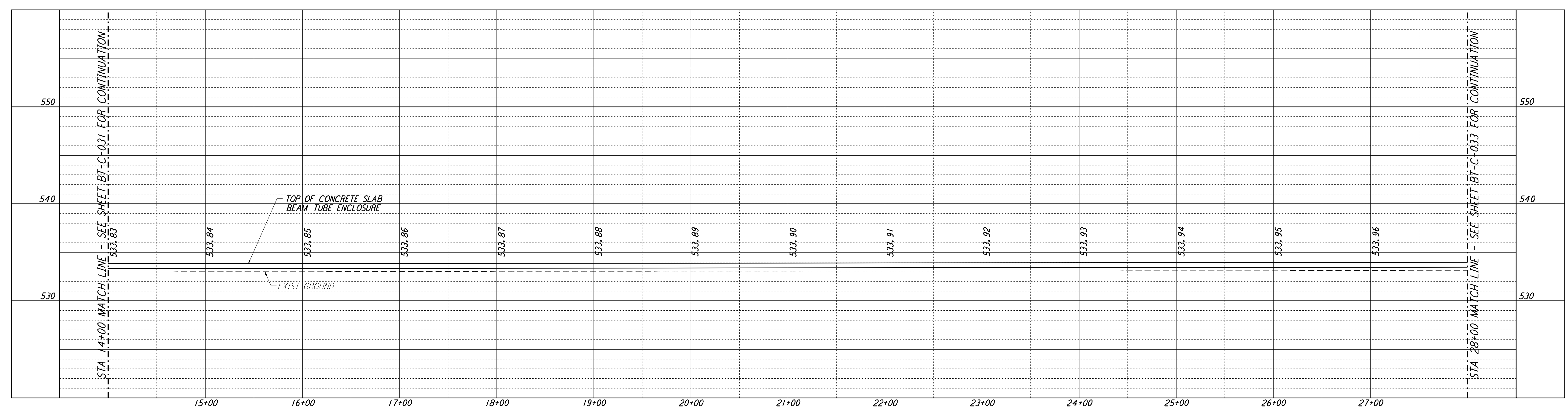
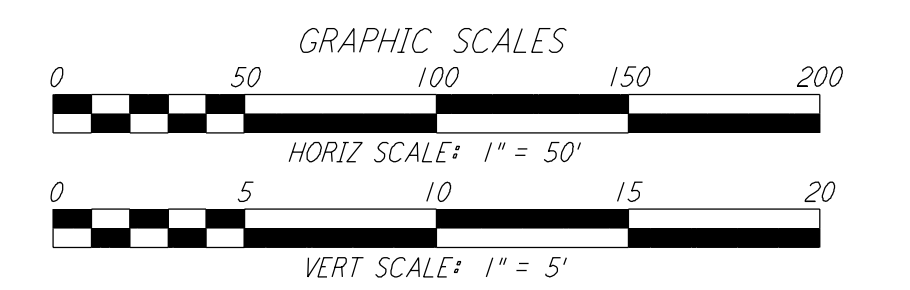
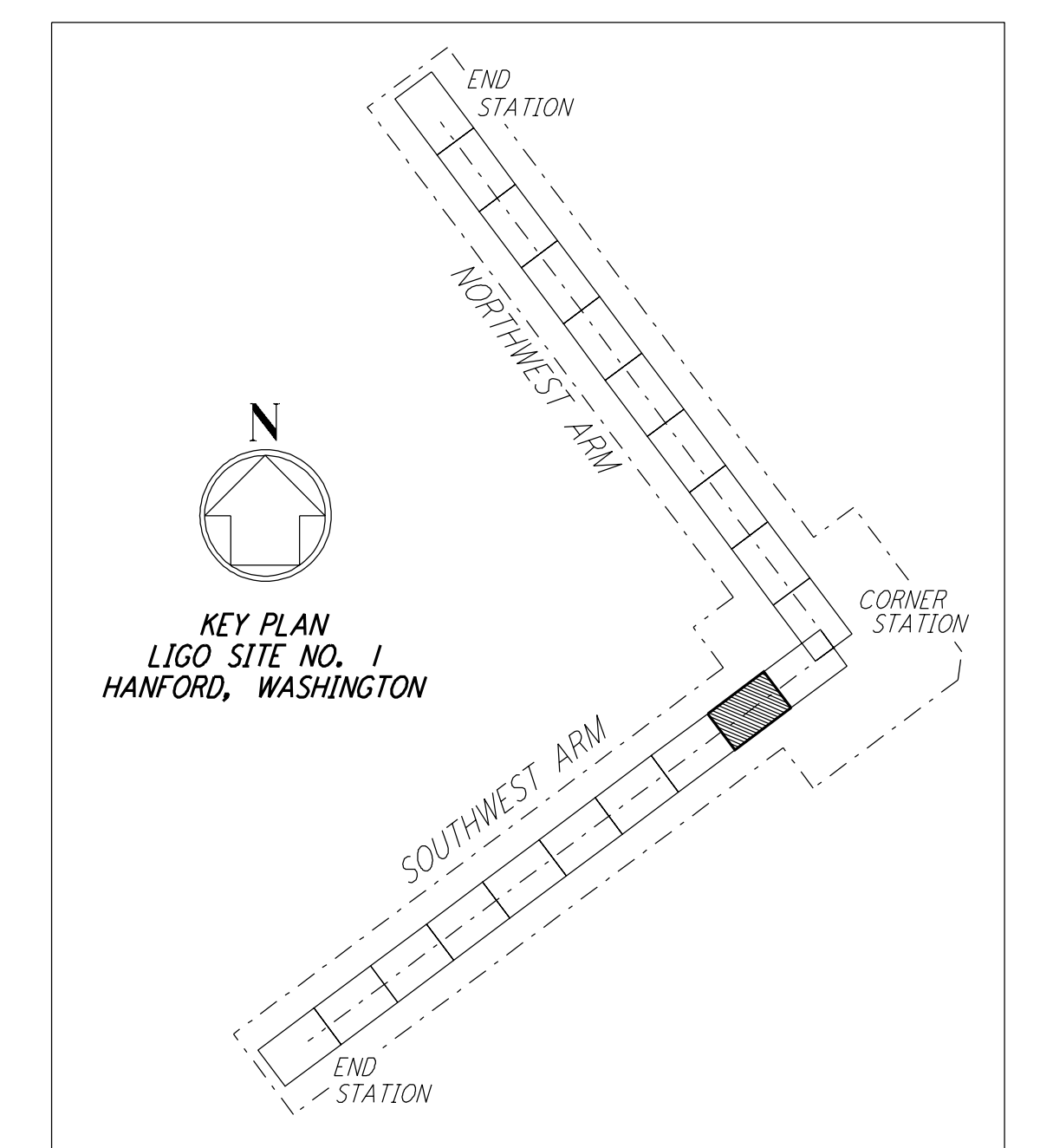
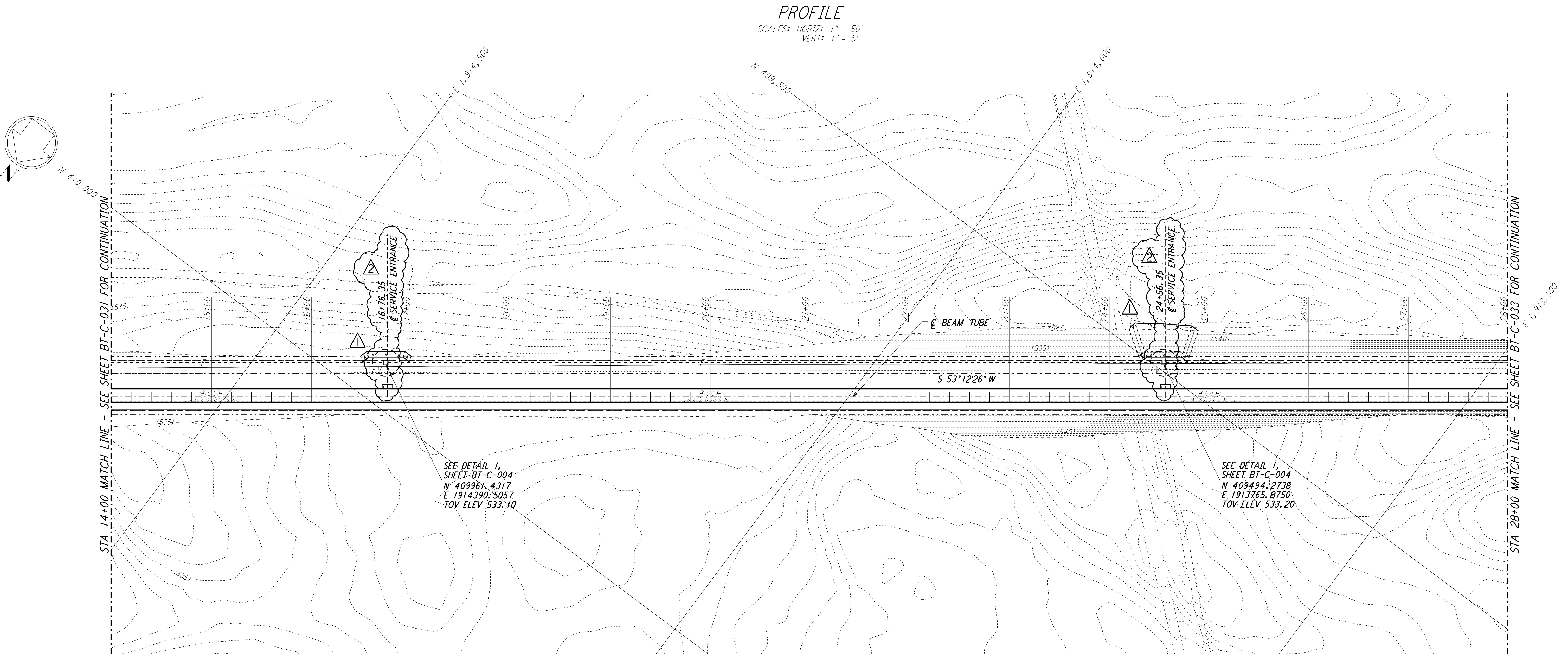


This document and the design it covers are the property of **PARSONS**. They are loaned only with the borrower's expressed written agreement that they will not be reproduced, copied, loaned, exhibited, or used in any other way, except by written consent from **PARSONS** to the borrower.



- NOTES:**
- SEE SHEET BT-C-002 FOR GENERAL NOTES, LEGEND AND ABBREVIATIONS.
 - SEE SHEET BT-C-004 FOR TYPICAL SECTIONS AND DETAILS.



LIGO-D960177-02-0

NO.	DATE	BY	CHKD	ENGR	PROJ	DESCRIPTION
2	5-10-96	WRB				REVISED BEAM TUBE SERVICE ENTRANCES
1	2-29-96	WRB	TDM	JB	MDW	CHANGE ORDER NO. 2

ISSUED FOR CONSTRUCTION		
DRAWN	WRB	1-19-96
CHECKED	MP	1-19-96
ENGINEER	JB	1-19-96
PROJ	MDW	1-19-96

PARSONS
 100 WEST WALNUT STREET
 PASADENA, CALIFORNIA

LIGO
 CALIFORNIA INSTITUTE OF TECHNOLOGY
 MASSACHUSETTS INSTITUTE OF TECHNOLOGY

LASER INTERFEROMETER GRAVITATIONAL-WAVE OBSERVATORY BTE SITework & FABRICATION - HANFORD, WA

CIVIL
 SOUTHWEST ARM
 PLAN AND PROFILE
 STA 14+00 TO STA 28+00

AS NOTED PP150969 8094
BT-C-032