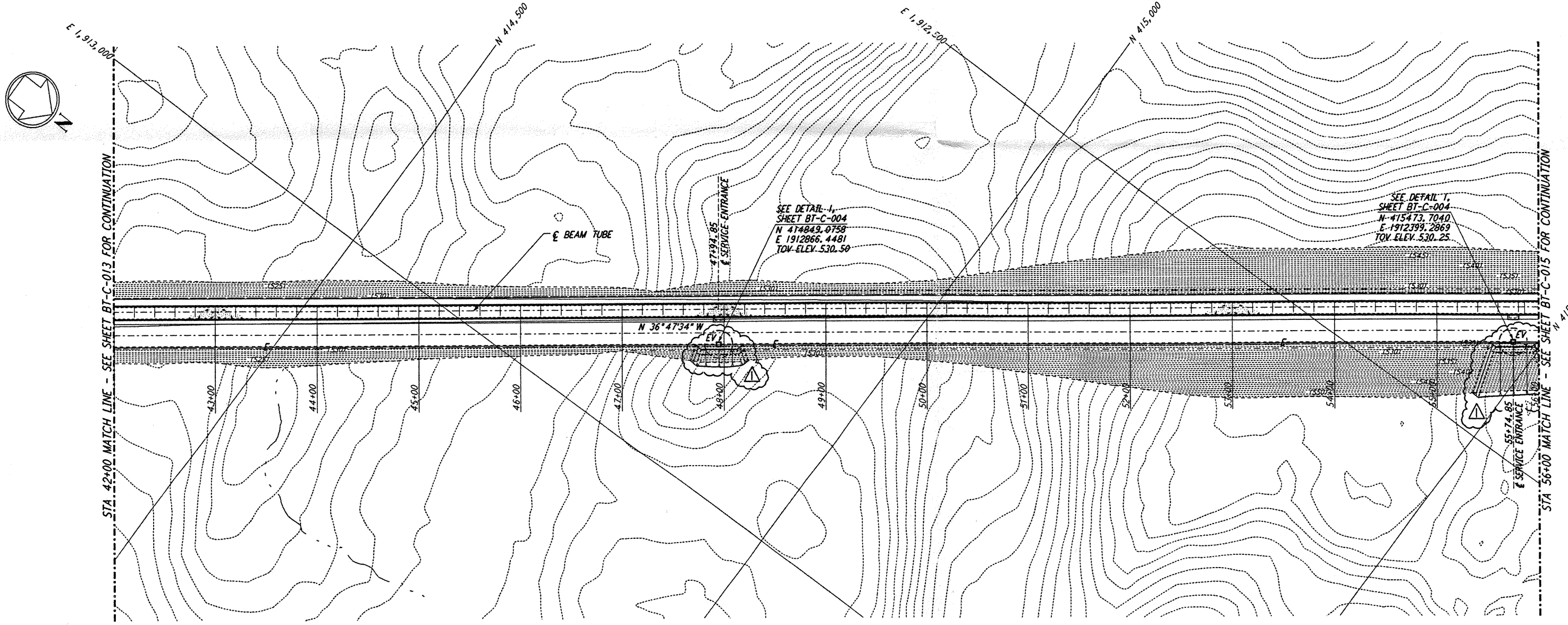
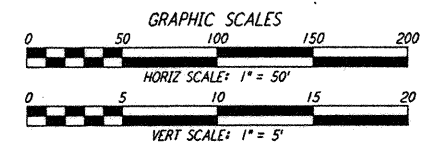
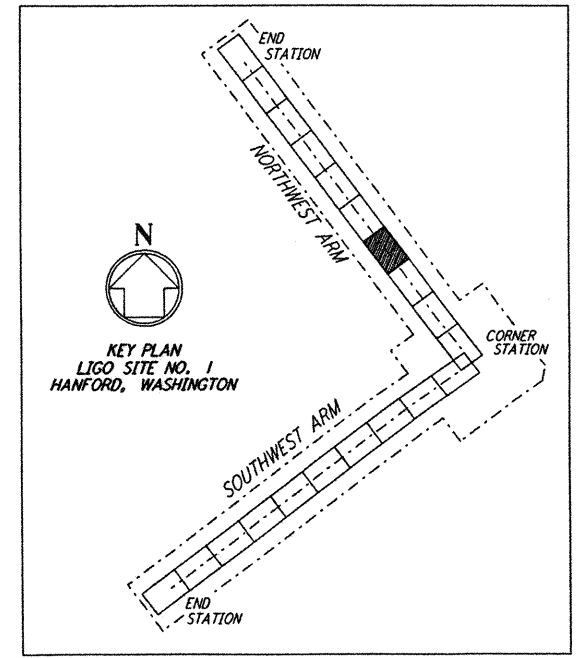


PROFILE
 SCALES: HORIZ: 1" = 50'
 VERT: 1" = 5'



PLAN
 SCALE: 1" = 50'

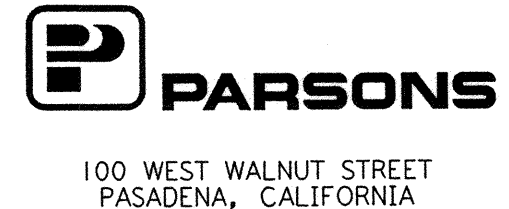
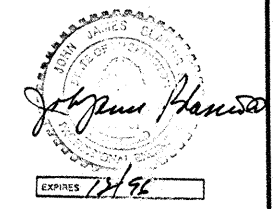
- NOTES:**
1. SEE SHEET BT-C-002 FOR GENERAL NOTES, LEGEND AND ABBREVIATIONS.
 2. SEE SHEET BT-C-004 FOR TYPICAL SECTIONS AND DETAILS.



This document and the design it covers are the property of PARSONS. They are loaned only with the borrower's expressed written agreement that they will not be reproduced, copied, loaned, exhibited, or used in any other way, except by written consent from PARSONS to the borrower.

NO.	DATE	BY	CHKD	ENGR	PROJ	DESCRIPTION
1	2-29-96	WRB				CHANGE ORDER NO. 2

ISSUED FOR CONSTRUCTION
 DRAWN: WRB 1-19-96
 CHECKED: MP 1-19-96
 ENGINEER: JB 1-19-96
 PROJ: MDW 1-19-96



LASER INTERFEROMETER GRAVITATIONAL-WAVE OBSERVATORY BTE SITWORK & FABRICATION - HANFORD, WA

TITLE: CIVIL NORTHWEST ARM PLAN AND PROFILE STA 42+00 TO STA 56+00

PROJECT NUMBER: PPI50969 8094

SHEET NUMBER: BT-C-014

LIGO 0960169-01-D