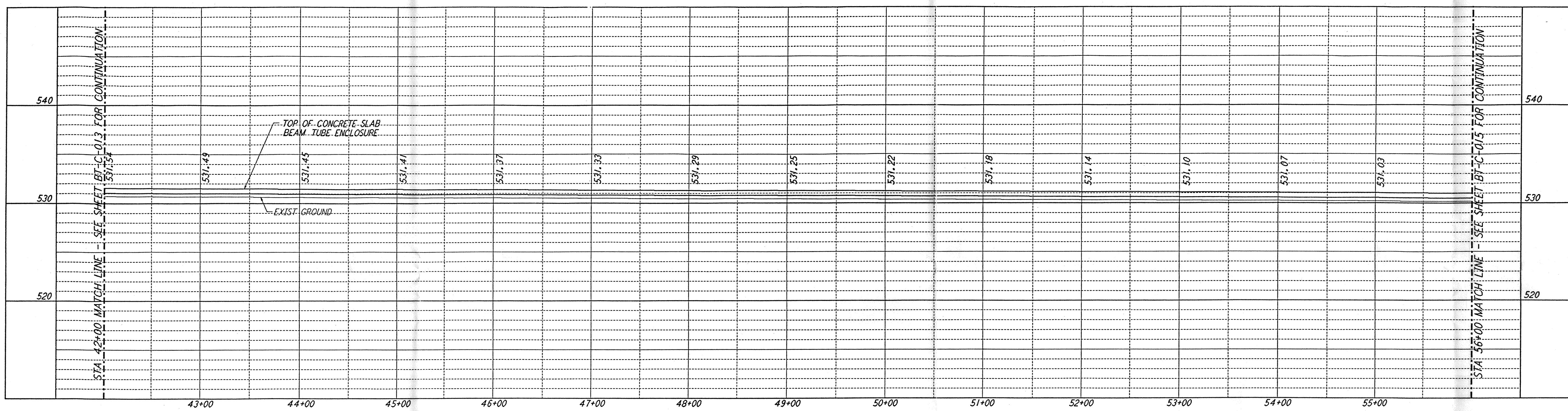
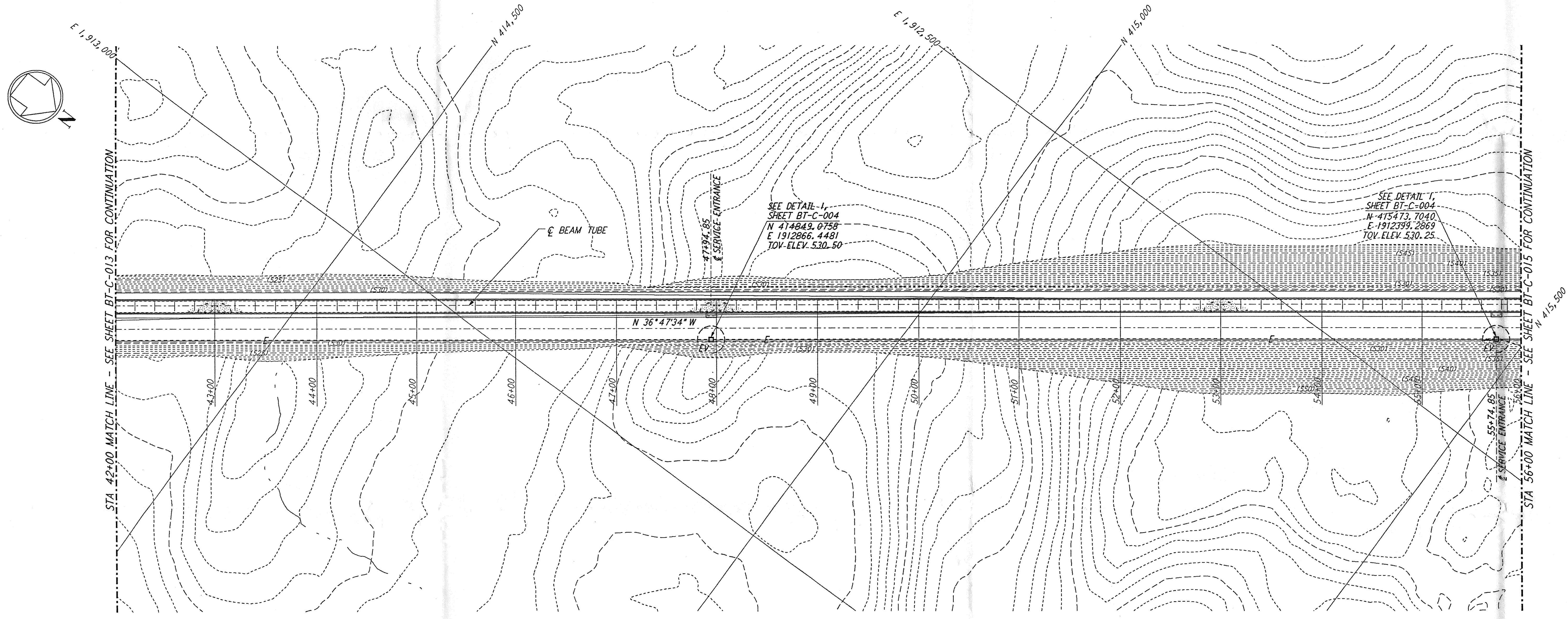


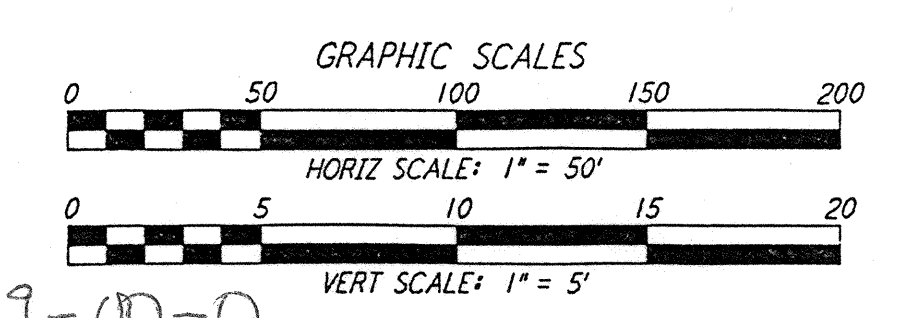
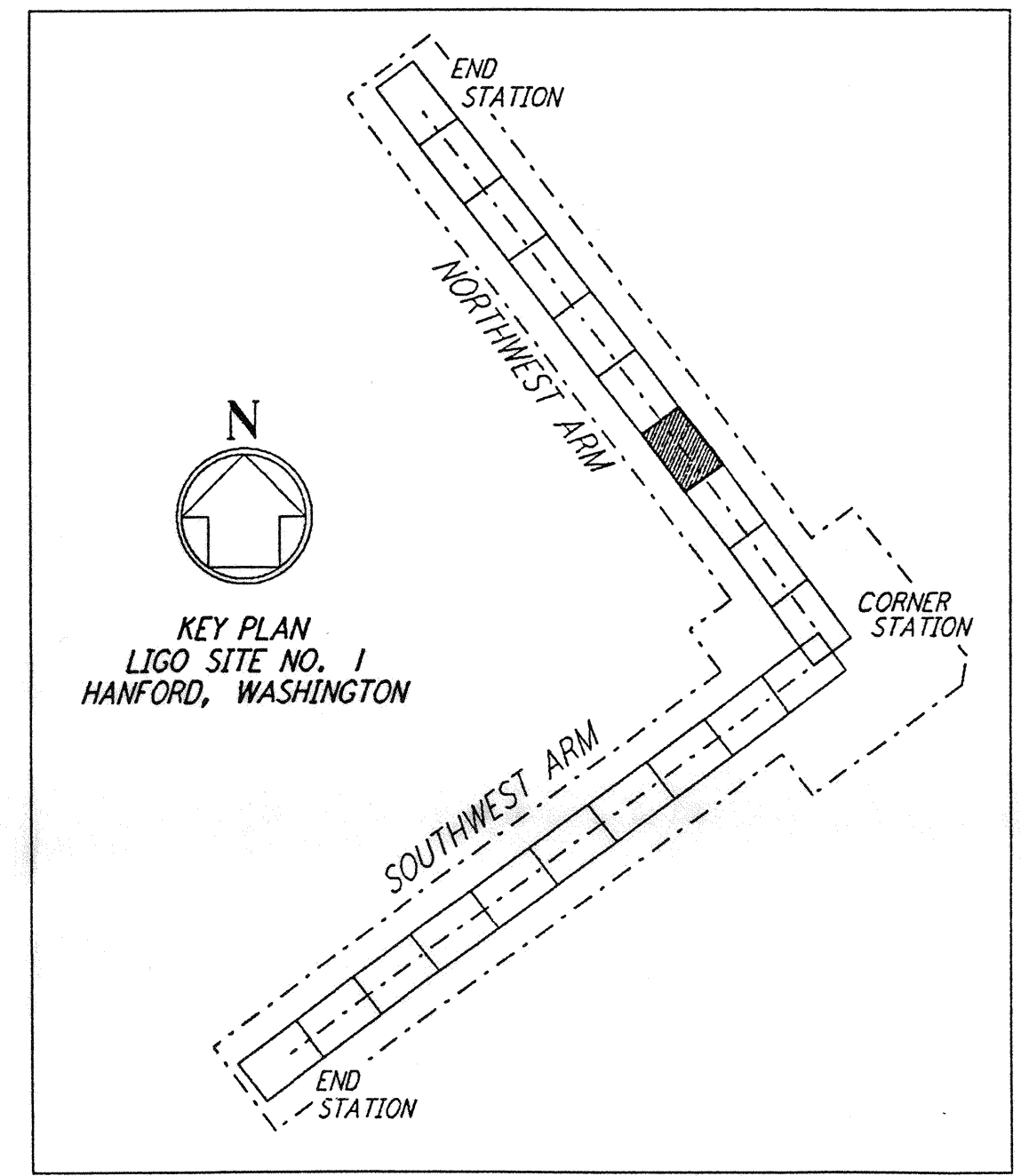
- NOTES:**
- SEE SHEET BT-C-002 FOR GENERAL NOTES, LEGEND AND ABBREVIATIONS.
 - SEE SHEET BT-C-004 FOR TYPICAL SECTIONS AND DETAILS.



PROFILE
 SCALES: HORIZ: 1" = 50'
 VERT: 1" = 5'



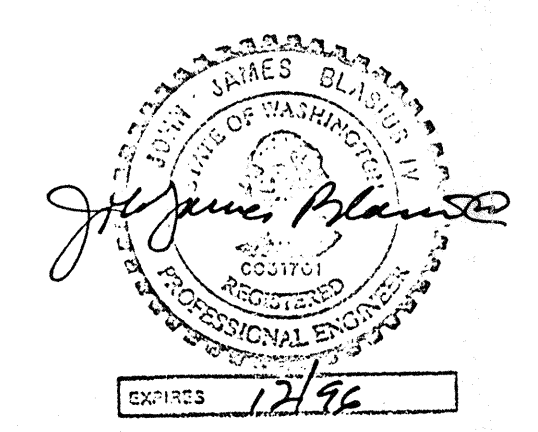
PLAN
 SCALE: 1" = 50'



D960169-00-0

NO.	DATE	BY	CHKD	ENGR	PROJ	DESCRIPTION

ISSUED FOR CONSTRUCTION	
DRAWN	WRB 1-19-96
CHECKED	vd 1-16-96
ENGINEER	jb 1-19-96
PROJ	WUBJ 1-19-96



LASER INTERFEROMETER GRAVITATIONAL-WAVE OBSERVATORY
 BTE SITWORK & FABRICATION - HANFORD, WA

TITLE: CIVIL NORTHWEST ARM PLAN AND PROFILE STA 42+00 TO STA 56+00

SCALE: AS NOTED

CONTRACT NUMBER: PP150969

PROJECT NUMBER: 8094

SHEET NUMBER: BT-C-014

REVISIONS:

This document and the design it covers are the property of PARSONS. They are loaned only with the borrower's expressed written agreement that they will not be reproduced, copied, loaned, exhibited, or used in any other way, except by written consent from PARSONS to the borrower.

E
 D
 C
 B
 A