

ABBREVIATIONS

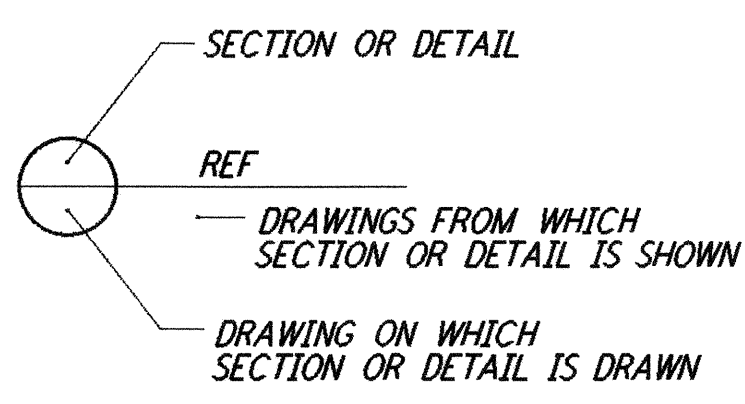
BLDG	BUILDING
BOP	BOTTOM OF PIPE
BTE	BEAM TUBE ENCLOSURE
CL	CENTERLINE CONDUIT ONLY
Δ	DELTA = ANGLE
E	EAST
ELEV	ELEVATION
EY	ELECTRICAL VAULT
EXIST	EXISTING
HORIZ	HORIZONTAL
ID	INSIDE DIAMETER
INV	INVERT
L	LENGTH
MAX	MAXIMUM
MIN	MINIMUM
N	NORTH
NO	NUMBER
OD	OUTSIDE DIAMETER
PUD	BENTON COUNTY PUBLIC UTILITY DISTRICT NO 1
R	RADIUS
REF	REFERENCE
RG	ROUGH GRADE
R/W	RIGHT-OF-WAY
S	SOUTH
SIM	SIMILAR
STA	STATION
T	TANGENT
TOC	TOP OF CONCRETE
TOV	TOP OF VAULT
TYP	TYPICAL
VERT	VERTICAL
W	WEST
W/	WITH

LEGEND

— 530 —	NEW CONTOUR - MAJOR
— (525) —	NEW CONTOUR - INTERMEDIATE
---	EXISTING CONTOUR - MAJOR
---	EXISTING CONTOUR - INTERMEDIATE
---	TOP/TOE OF SLOPE
---	FLOWLINE
	CONCRETE
533.78 RG	ROUGH GRADE ELEVATION
530.25 INV	INVERT ELEVATION
---	ELECTRICAL BURIED CABLE (PROVIDED BY OTHERS)
---	ELECTRICAL DUCT BANK

GENERAL NOTES

1. THE TOPOGRAPHY WITHIN THE PROPERTY LINES, WAS GENERATED BY COMPUTER METHODS FROM A SURVEY PERFORMED BY J-U-B ENGINEERS, INC., KENNEWICK, WASHINGTON, DATED SEPTEMBER 23, 1993.
2. HORIZONTAL AND VERTICAL DATUMS ARE ALSO FROM THE J-U-B- ENGINEERS, INC. SURVEY, AND ARE AS FOLLOWS:
 HORIZONTAL DATUM: ALL BEARINGS AND COORDINATES SHOWN ARE STATE PLANE, WASHINGTON STATE PLANE LAMBERT SOUTH ZONE NAD 83/91
 VERTICAL DATUM: NAVD 88
3. STRAIGHT GRADE BETWEEN SPOT ELEVATIONS, UNLESS OTHERWISE SHOWN ON PLANS.
4. NOTES RELATING TO A SPECIFIC DRAWING WILL BE FOUND ON THE DRAWING FOR WHICH THEY ARE APPLICABLE.
5. DIMENSIONS, ELEVATIONS AND LOCATION OF EXISTING UTILITIES ARE TO BE VERIFIED PRIOR TO START OF CONSTRUCTION BY CONTRACTOR.
6. AN EXISTING 6" WATERLINE IS LOCATED ALONG THE WEST SIDE OF THE SOUTHWEST ARM, WHICH BEGINS AT A WELL PUMP POINT NEAR THE SOUTHWEST END STATION AND TERMINATES AT A POND LOCATED ADJACENT TO THE CORNER STATION PAD ON THE SOUTHWEST SIDE. EXACT LOCATION AND ALIGNMENT SHALL BE VERIFIED IN THE FIELD.
7. BURIED ELECTRICAL CABLE, ELECTRICAL VAULTS, SWITCHGEAR AND TRANSFORMERS ARE SHOWN FOR INFORMATION ONLY. THESE ITEMS ARE PROVIDED BY OTHERS.



not be reproduced, copied, loaned, exhibited, or used in any other way, except by written consent from PARSONS to the borrower.

This document and the design it covers are the property of PARSONS. They are loaned only with the borrower's expressed written agreement that they will

NO.	DATE	BY	CHKD	ENGR	PRGJ	DESCRIPTION
D	11/21/95	WRB				ISSUED FOR BID
C	11/6/95	WRB				FINAL DESIGN REVIEW
B	10/3/95	WRB				DRAFT FINAL DESIGN REPORT
A	8/14/95	WRB				PRELIMINARY DESIGN REPORT

△	DRAWN	WRB
	CHECKED	
	ENGINEER	
	PROJ	

100 WEST WALNUT STREET
PASADENA, CALIFORNIA

CALIFORNIA INSTITUTE OF TECHNOLOGY
MASSACHUSETTS INSTITUTE OF TECHNOLOGY

0960162-0-0

LASER INTERFEROMETER
GRAVITATIONAL-WAVE OBSERVATORY
BTE SITEWORK & FABRICATION - HANFORD, WA

TITLE	SCALE	CONTRACT NUMBER	PROJECT NUMBER
GENERAL NOTES, LEGEND & ABBREVIATIONS	NONE	PP150969	8094
SHEET NUMBER		REVISIONS	
BT-C-002			