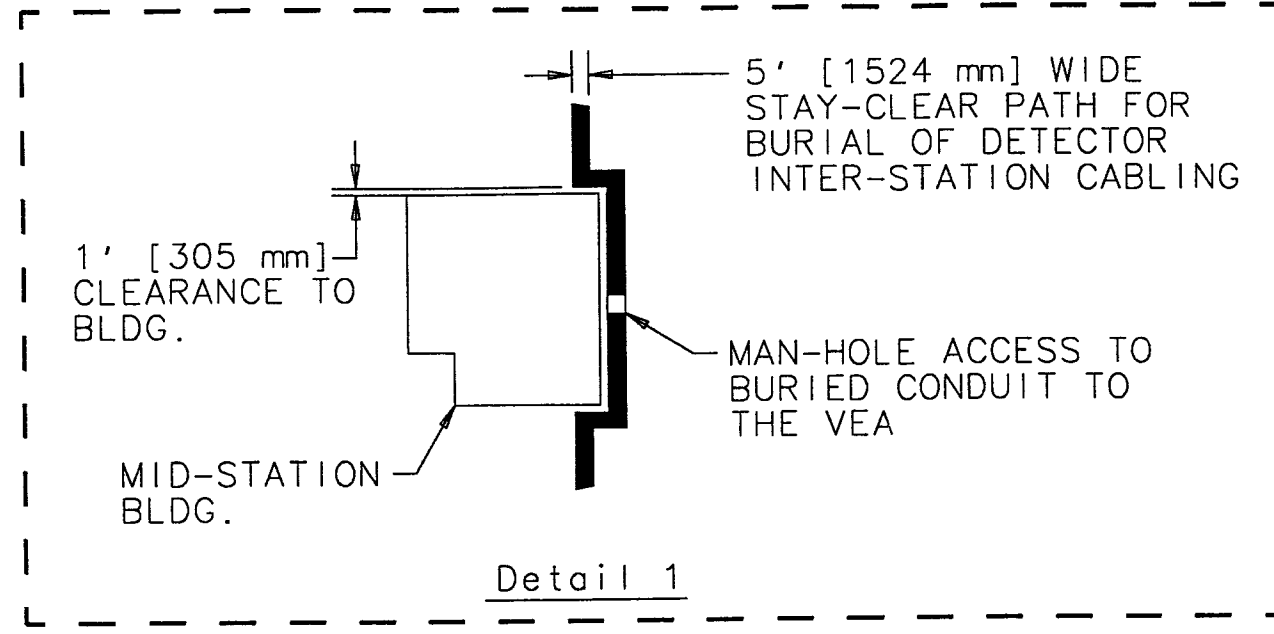


REV	DESCRIPTION OF CHANGE	APPROVAL	DATE
A	ORIGINAL		

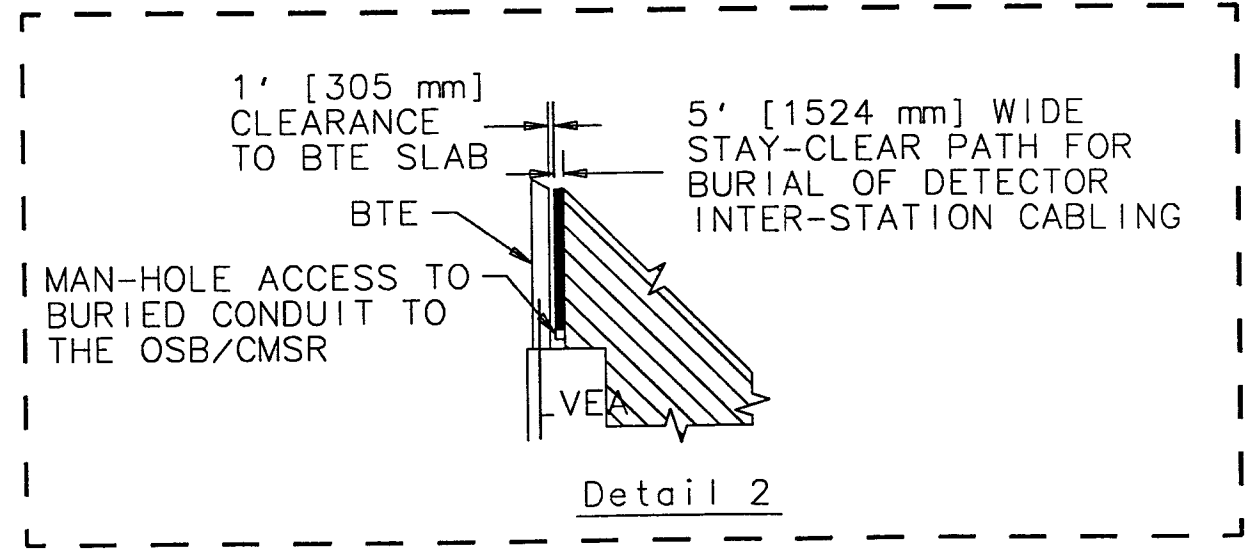
END-STATION



- NOTES:
- 1) ICD INFORMATION: This drawing contains interface information.
 - 2) A BTE cross-over access bridge/roadway along the X-Arm is permitted in the stay clear zone for future building/detector expansion.

BEAM TUBE Y-ARM

Detail 1
MID-STATION



600' [182880]
120' [36576]

STAY-CLEAR ZONE FOR FUTURE EXPANSION (SEE NOTE 2)

MID-STATION END-STATION

Detail 2 (Typ.)
CORNER STATION

BEAM TUBE X-ARM

QTY REQD	FSCM NO	PART OR IDENTIFYING NO	NOMENCLATURE OR DESCRIPTION	MATERIAL SPECIFICATION	ITEM NO
PARTS LIST					
UNLESS OTHERWISE SPECIFIED DIMENSIONS ARE IN Ft. (mm) TOLERANCES ARE: ± 1 in. FRACTIONS DECIMALS			APPROVALS	DATE	LIGO CALIFORNIA INSTITUTE OF TECHNOLOGY MASSACHUSETTS INSTITUTE OF TECHNOLOGY
DO NOT SCALE DRAWING			DRAWN D. Coyne	4/1/96	
			CHECKED A. Lazzarini		TITLE STAY-CLEAR ZONES FOR INTER-STATION BURIED CABLE AND FUTURE BUILDING EXPANSION
			R. Bark		SIZE B
			S. Whitcomb		DWG NO. D960157
			F. Asiri		REV A
			M. Coles		SCALE NTS
					SHEET 1 OF 1