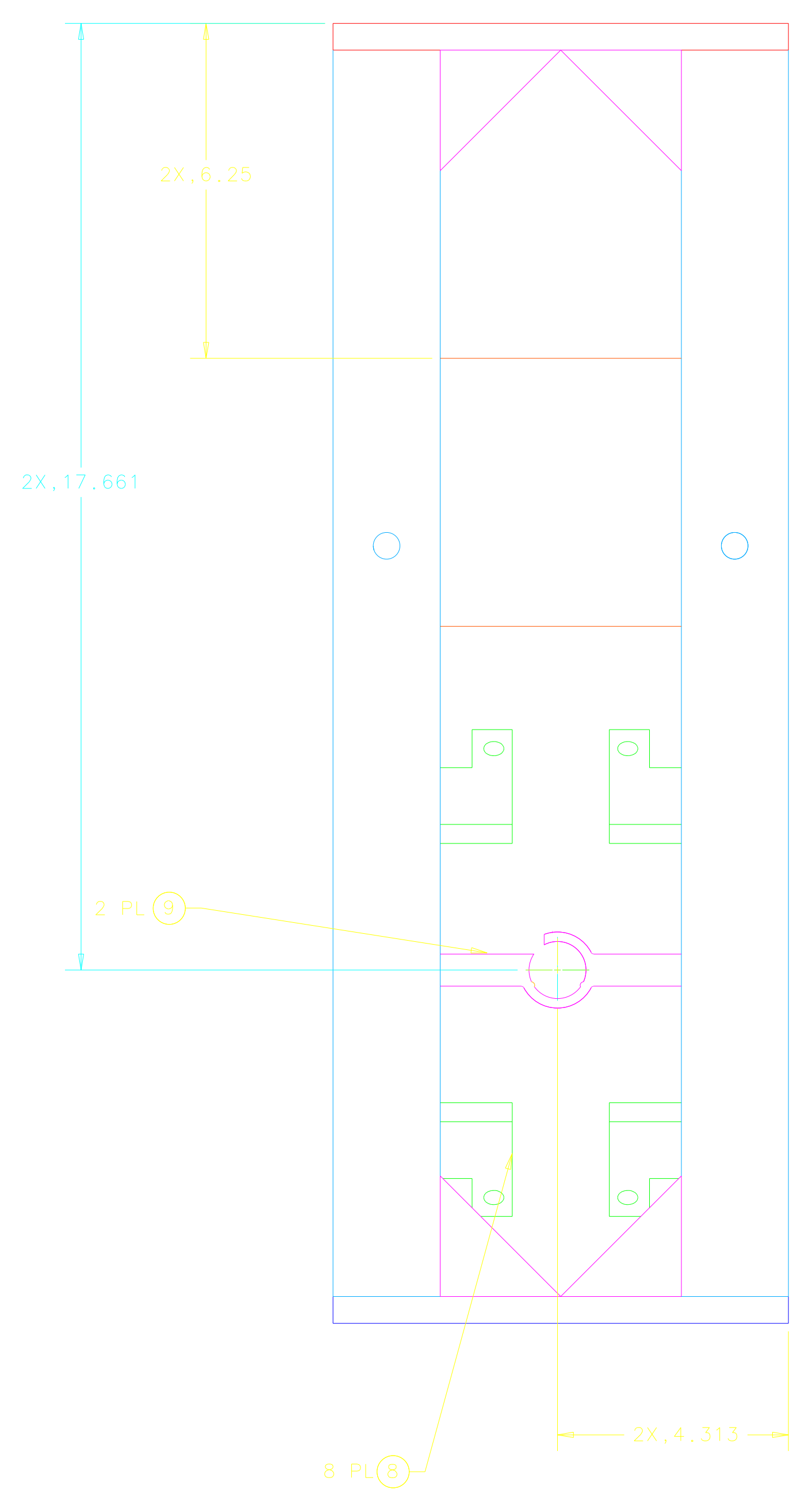
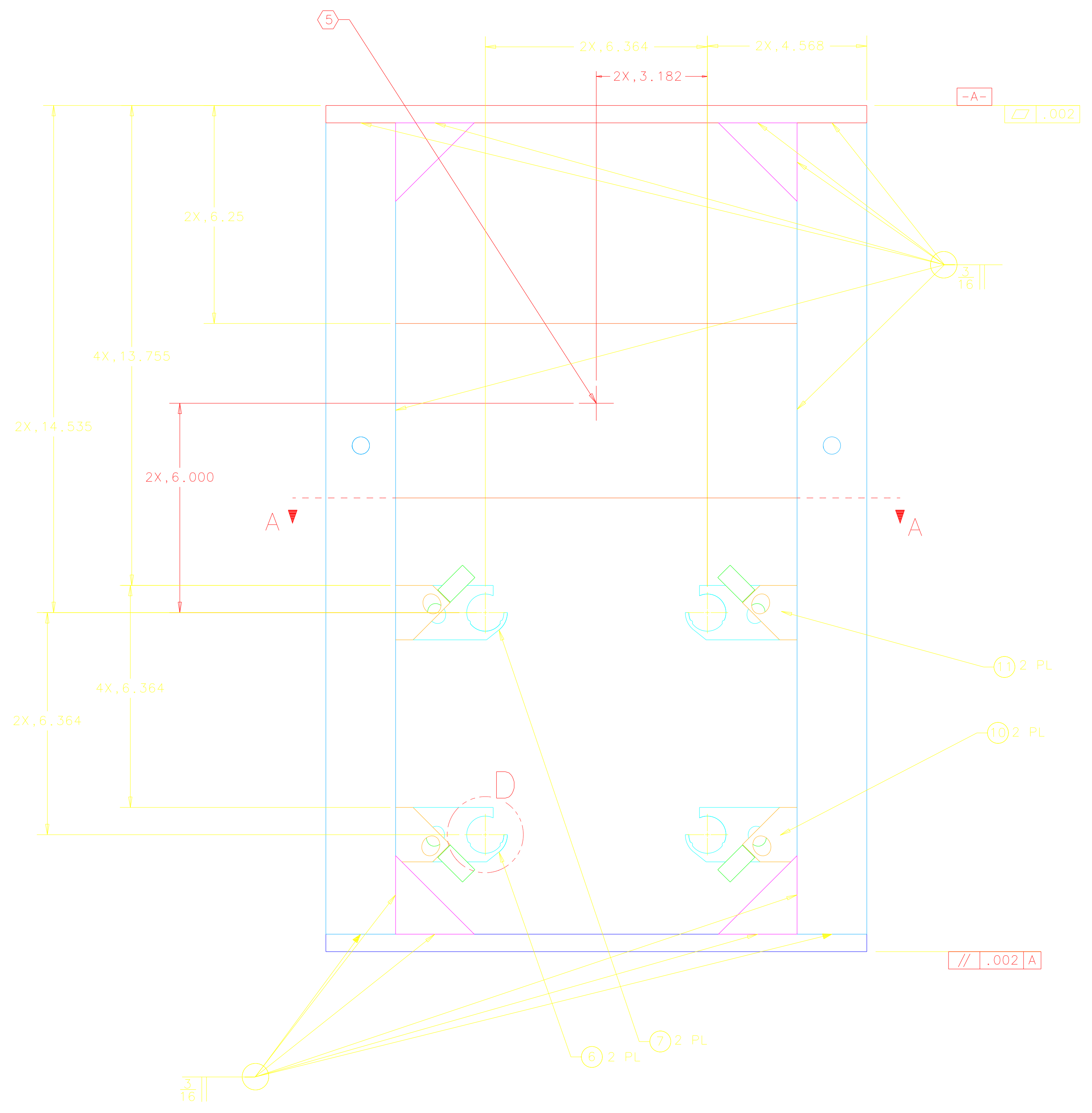
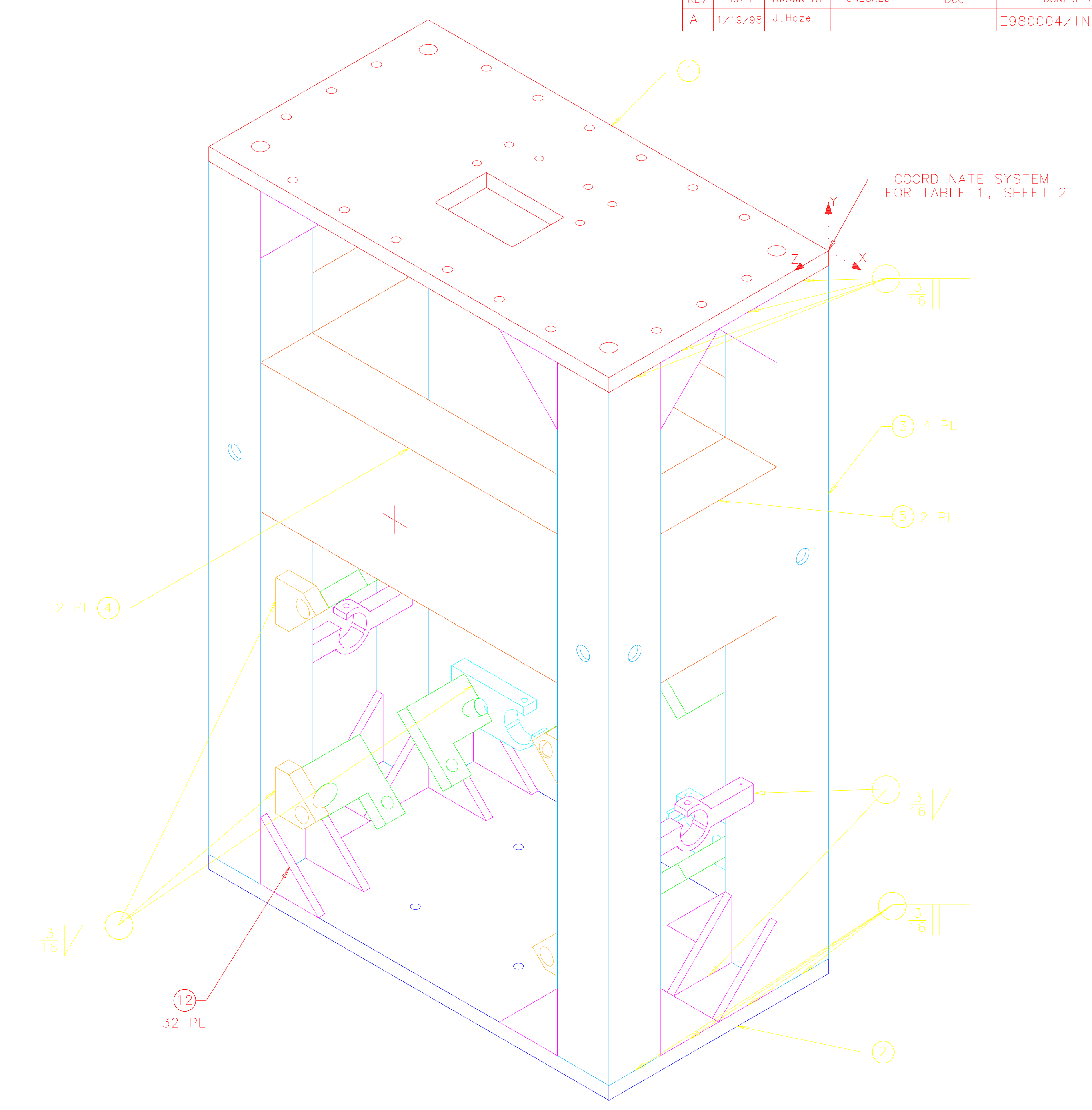
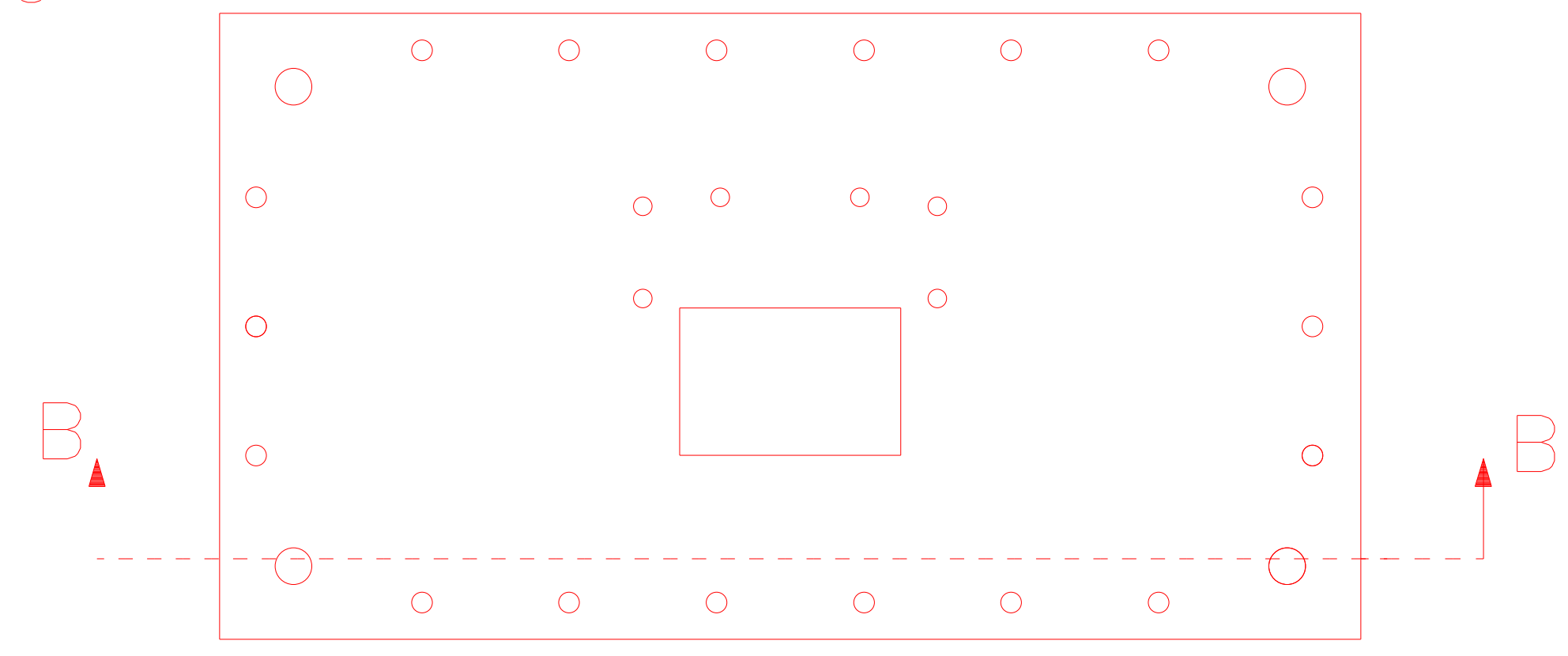


1 2 3 4 5 6 7 8

REV	DATE	DRAWN BY	CHECKED	DC	DCN/DESCRIPTION
A	1/19/98	J. Hazel			E980004/INITIAL RELEASE

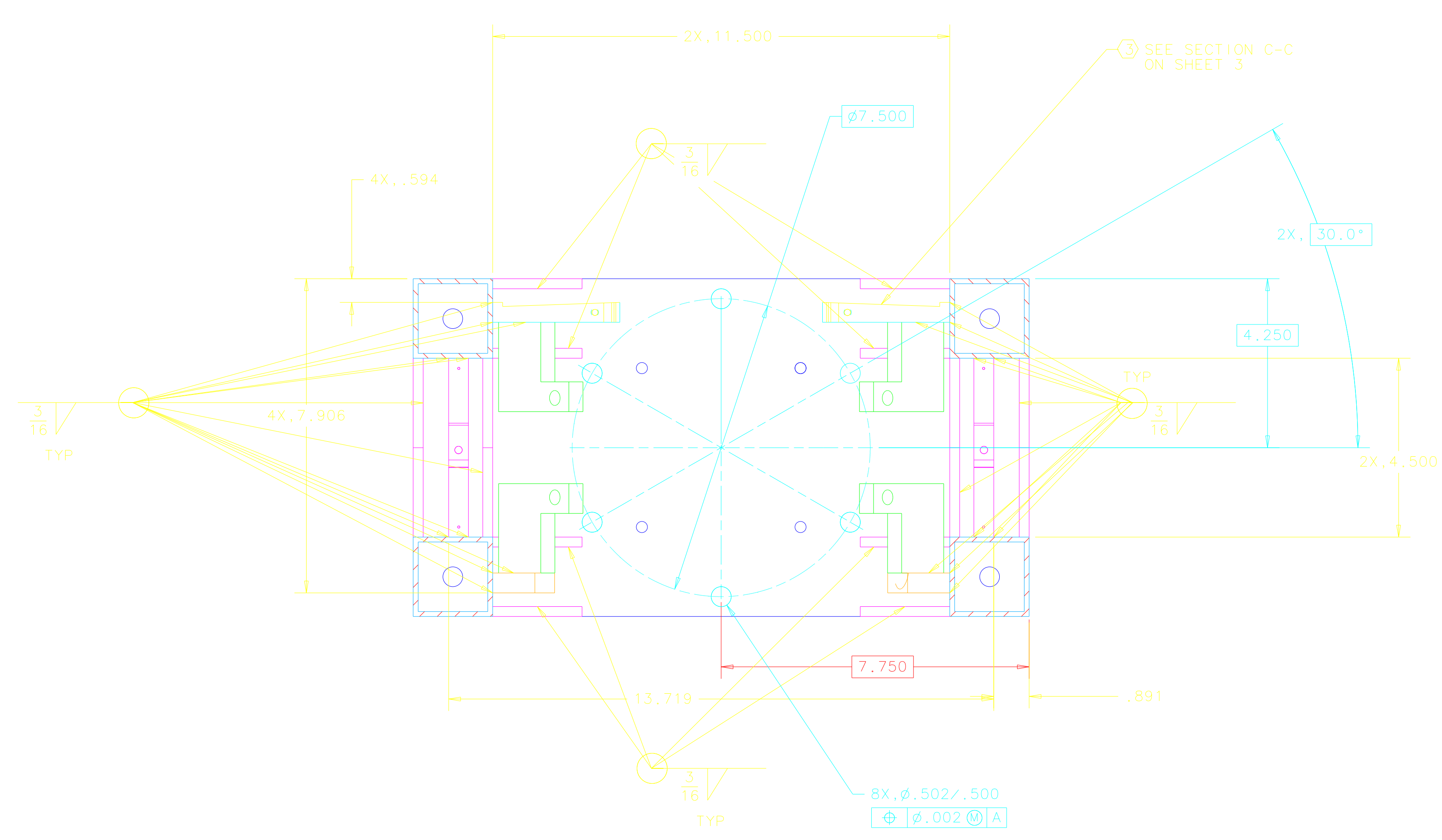
- NOTES: (UNLESS OTHERWISE SPECIFIED)
- SPECIFICATIONS FOR THE CONSTRUCTION OF THIS ASSEMBLY ARE DETAILED IN LIGO E970038, THE LARGE OPTIC SUSPENSION STRUCTURAL FABRICATION SPECIFICATION.
 - THESE FEATURES TO BE MACHINED AFTER ANNEALING.
 - AFTER WELDING AND ANNEALING, FLY CUT THESE SURFACES, OF BRACKETS FIND NOS. 6 AND 7, AT A 2° ANGLE. REMOVE MATERIAL FROM THE CENTER OF THE ASSEMBLY TO .25 FROM THE LEGS.
 - TABLE 1 DEFINES THE VECTORS THAT ARE THE CENTERLINES OF THE EIGHT THREADED HOLES DEFINED IN VIEW E ON SHEET 2.
 - ETCH OR SCRIBE CROSSHAIRS, POSITION AND APPROX SIZE AS SHOWN, ONTO FRONT AND BACK OF STRUCTURE. ETCH .01 WIDE MAX. AND .02 MAX BELOW SURFACE, AFTER ANNEALING.



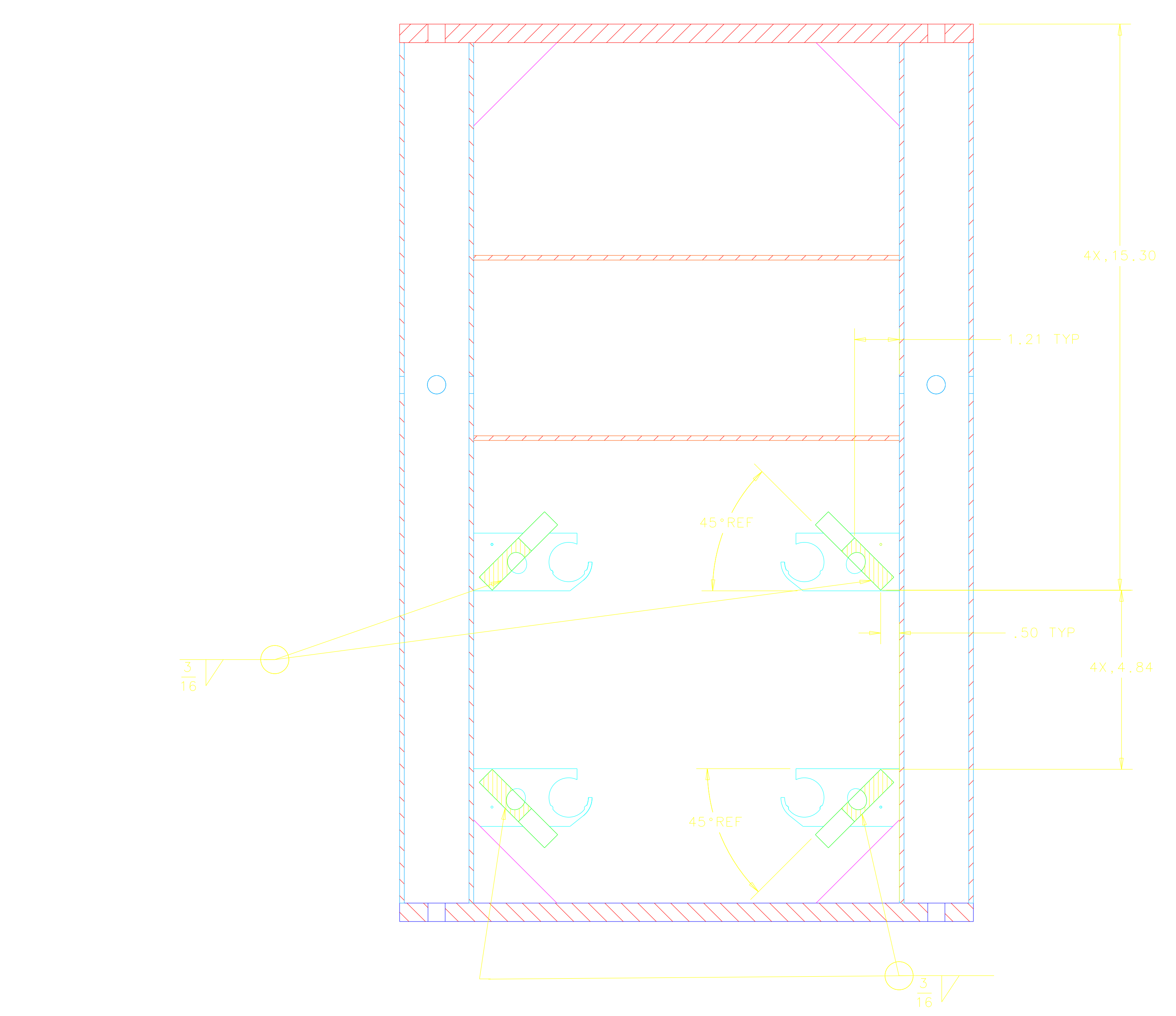
QTY	PART NO	PART DESCRIPTION	MATERIAL SPECIFICATION	UNIT
32		GUSSET, 2.25 x 2.25 x .45"	.13 THICK 304 STAINLESS	12
2	D960143	LOS BRACKET, FRONT, TOP		11
2	D960142	LOS BRACKET, FRONT, BOTTOM		10
2	D960141	LOS BRACKET, SENSOR/ACTUATOR, SIDE		9
8	D960140	LOS BRACKET, SAFETY STOP		8
2	D960137	LOS BRACKET, SENSOR/ACTUATOR, TOP		7
2	D960136	LOS BRACKET, SENSOR/ACTUATOR, BOTTOM		6
2	D960506	LOS SIDE STIFFENER		5
2	D960502	LOS FRONT STIFFENER		4
4	D960504	LOS LEG		3
1	D960505	LOS BOTTOM PLATE		2
1	D960503	LOS TOP PLATE		1

UNLESS OTHERWISE SPECIFIED DIMENSIONS ARE IN INCHES TOLERANCES ARE:		APPROVALS		DATE	LIGO CALIFORNIA INSTITUTE OF TECHNOLOGY MASSACHUSETTS INSTITUTE OF TECHNOLOGY	
FRACTIONS	DECIMALS	ANGLES	DATE	DATE	TITLE	
±	0.5		J. Hazel	4/96	LARGE OPTIC SUSPENSION STRUCTURE ASSEMBLY	
0. XX = ±0.03			CHECKED			
0. XXX = ±0.005						
DO NOT SCALE DRAWING						
MATERIAL		FINISH		SCALE	SIZE	REV
NEXT ASSEMBLY D960132		FILE LOCATION ~janeen/4nD960133*.dwg		1/2	E D960133	A
				SHEET 1 OF 3		

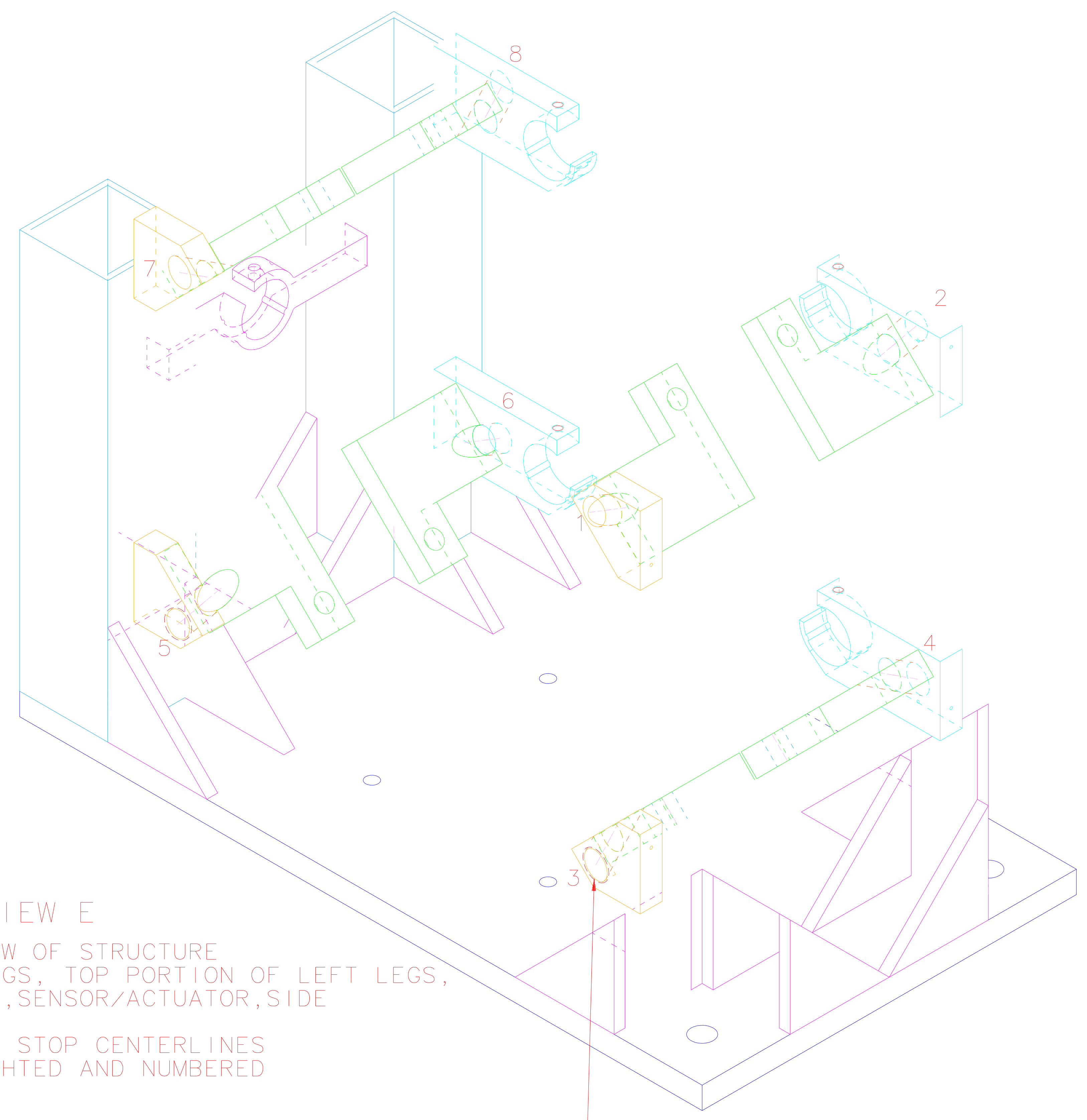
1 2 3 4 5 6 7 8



SECTION A-A



SECTION B-B



VIEW E
ISO VIEW OF STRUCTURE
WITHOUT: RIGHT LEGS, TOP PORTION OF LEFT LEGS,
RIGHT LOS BRACKET, SENSOR/ACTUATOR, SIDE
CHAMFER STOP CENTERLINES
HIGHLIGHTED AND NUMBERED

TABLE 1 CHAMFER STOP VECTORS

CHAMFER STOP NUMBER	START POINT	END POINT
1	-3.039, -14.272, 7.906	-3.526, -15.278, 6.089
2	-3.061, -14.319, 0.594	-3.525, -15.278, 2.326
3	-3.039, -21.161, 7.906	-3.526, -20.156, 6.089
4	-3.015, -21.205, 0.594	-3.525, -20.153, 2.496
5	-12.461, -21.161, 7.906	-11.974, -20.156, 6.089
6	-12.485, -21.205, 0.594	-11.975, -20.153, 2.496
7	-12.461, -14.272, 7.906	-11.974, -15.278, 6.089
8	-12.439, -14.319, 0.594	-11.975, -15.278, 2.326

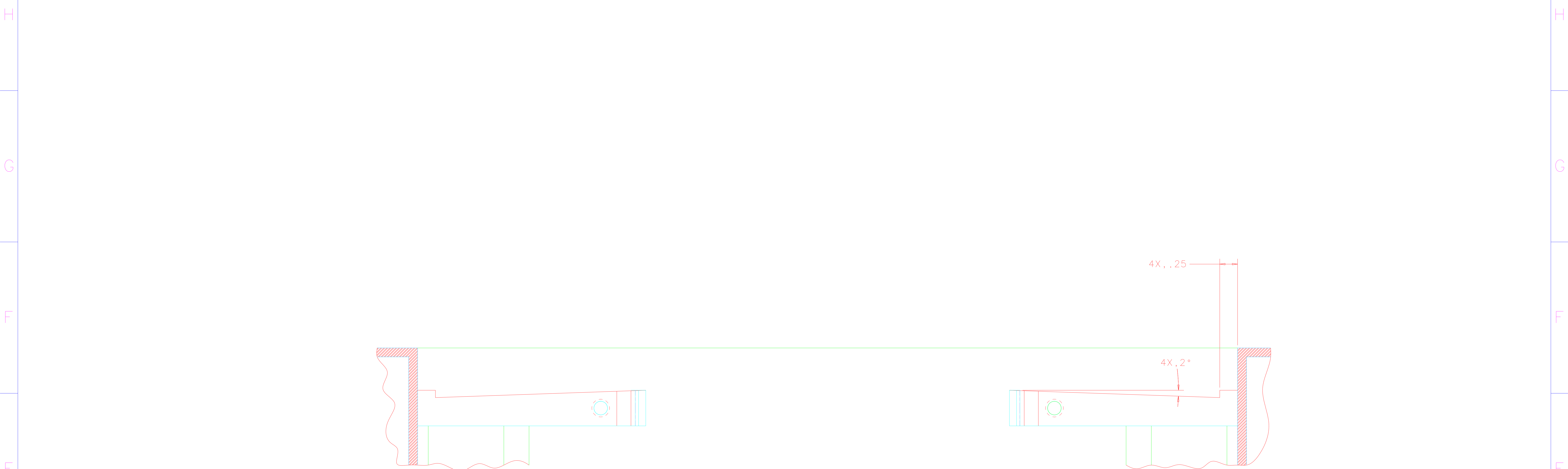
START POINTS LIE ON A PLANE OF A BRACKET OF THIS ASSEMBLY.
ALL POINTS ARE REFERENCED FROM (0,0,0) OF COORDINATE SYSTEM
DESIGNATED ON ISO VIEW ON SHEET 1.

NEXT ASSEMBLY D960132
FILE LOCATION home/dcc/docs/D960133.pdf

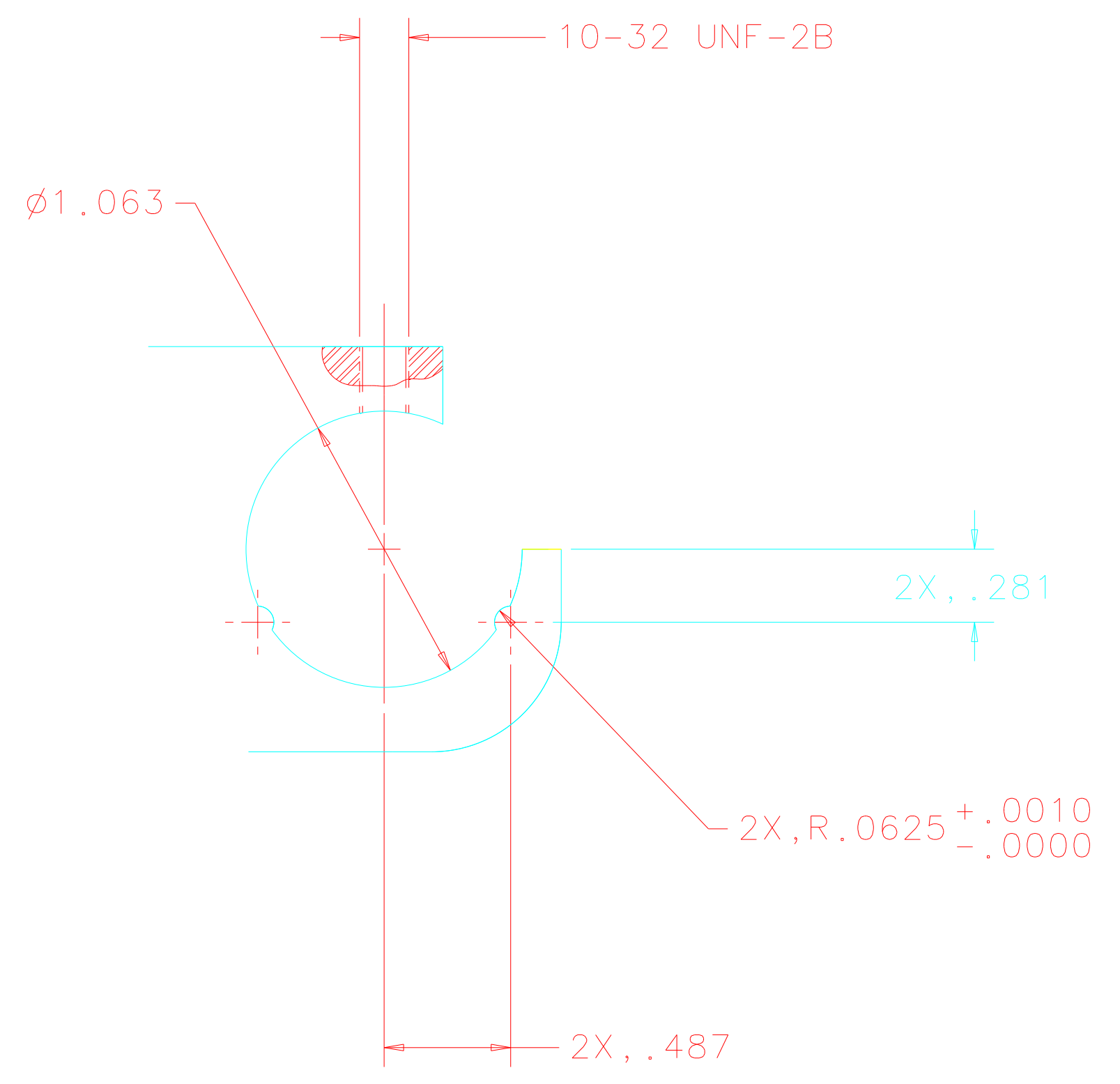
UNLESS OTHERWISE SPECIFIED DIMENSIONS ARE IN INCHES FRACTIONS DECIMALS ANGLES :0.5 0.XX±0.03 0.XXX±0.005 DO NOT SCALE DRAWING	APPROVALS J. Hazel CHECKED	DATE 4/96	PARTS LIST LIGO CALIFORNIA INSTITUTE OF TECHNOLOGY MASSACHUSETTS INSTITUTE OF TECHNOLOGY TITLE LARGE OPTIC SUSPENSION STRUCTURE ASSEMBLY SIZE D960133 SCALE 1/2	REV A SHEET 2 OF 3
---	----------------------------------	--------------	--	-----------------------------

1 2 3 4 5 6 7 8

REV	DATE	DRAWN BY	CHECKED	DC	DCN/DESCRIPTION
A	1/19/98	J. Hazel			E980004/INITIAL RELEASE



SECTION C-C
FLY CUT DEFINED
IN NOTE ③



VIEW D ②
SCALE 4/1
TYPICAL 6 PLACES

NEXT ASSEMBLY D960132
FILE LOCATION home/dcc/docs/D960133sh3.pdf

REV	DATE	DRAWN BY	CHECKED	DC	DCN/DESCRIPTION
A	4/96	J. Hazel			LIGO CALIFORNIA INSTITUTE OF TECHNOLOGY MASSACHUSETTS INSTITUTE OF TECHNOLOGY
PARTS LIST					
LARGE OPTIC SUSPENSION STRUCTURE ASSEMBLY					
MATERIAL					REV A
FINISH					SIZE E
SCALE 1/2					SHEET 3 OF 3

1 2 3 4 5 6 7 8