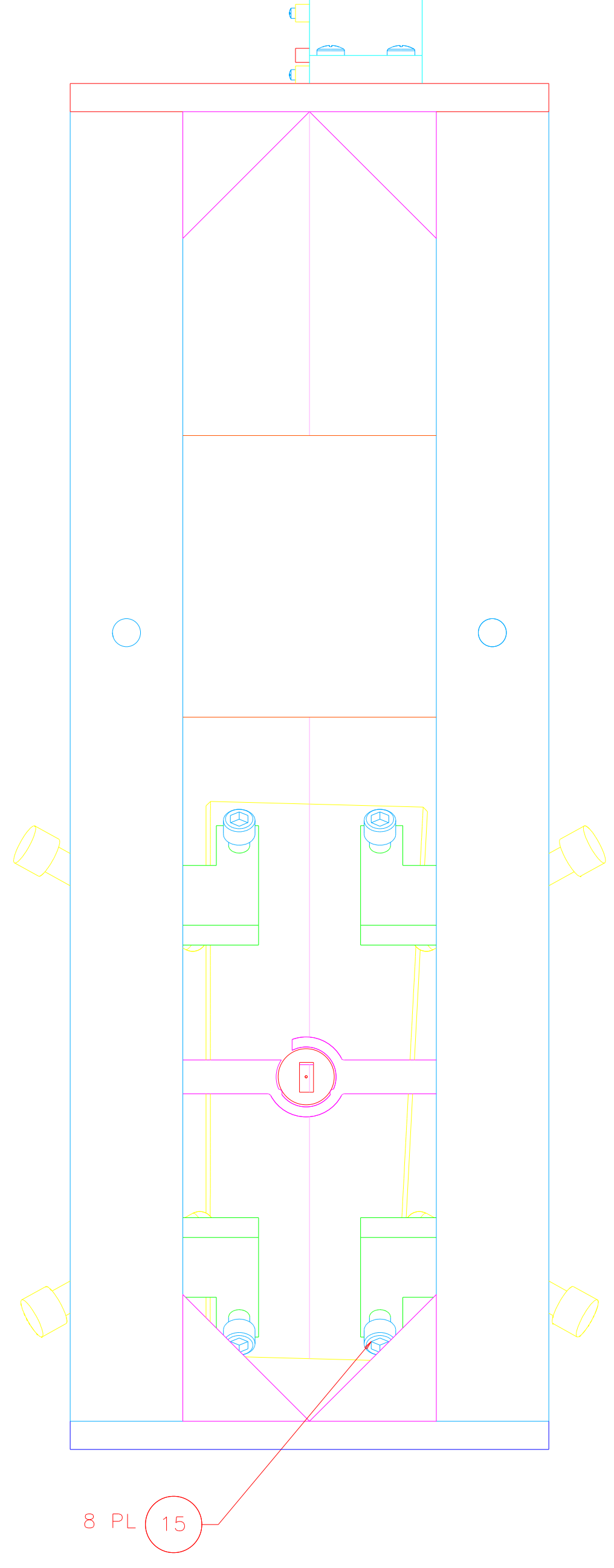
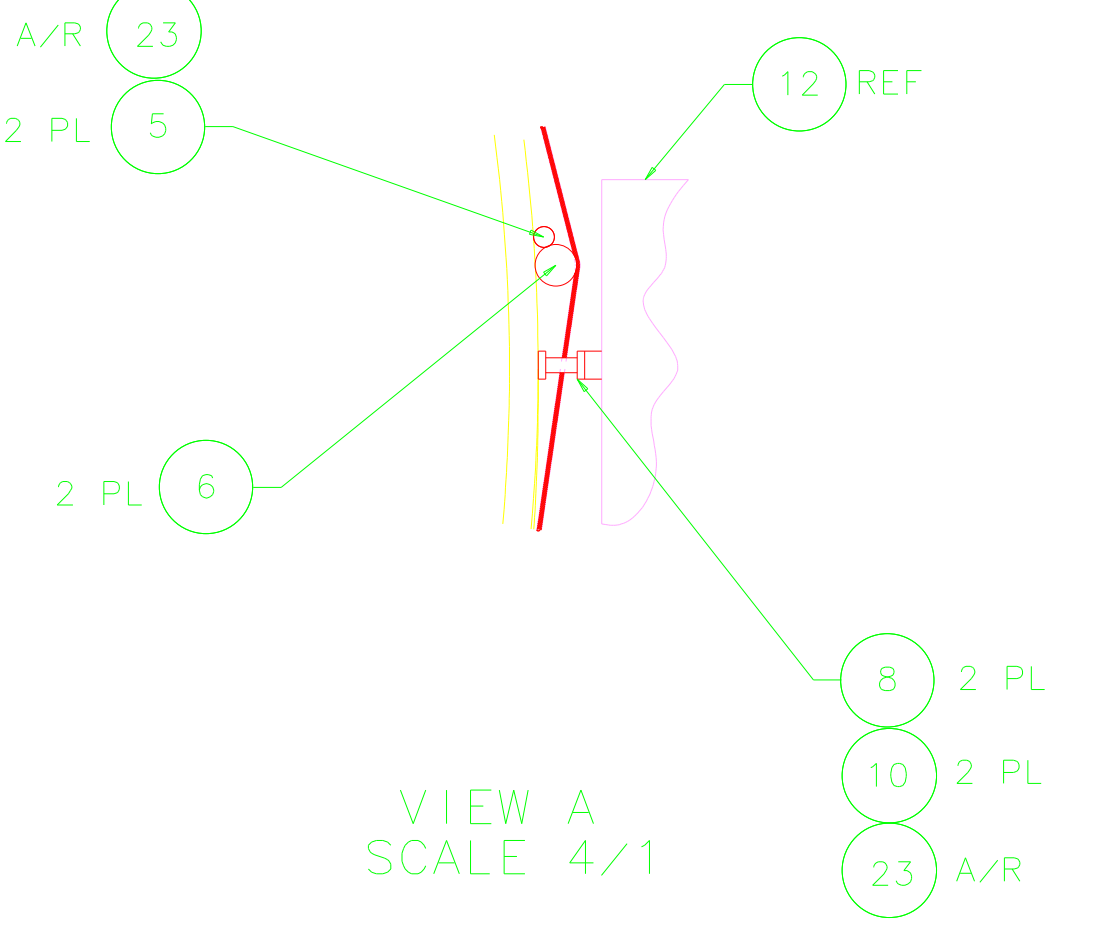
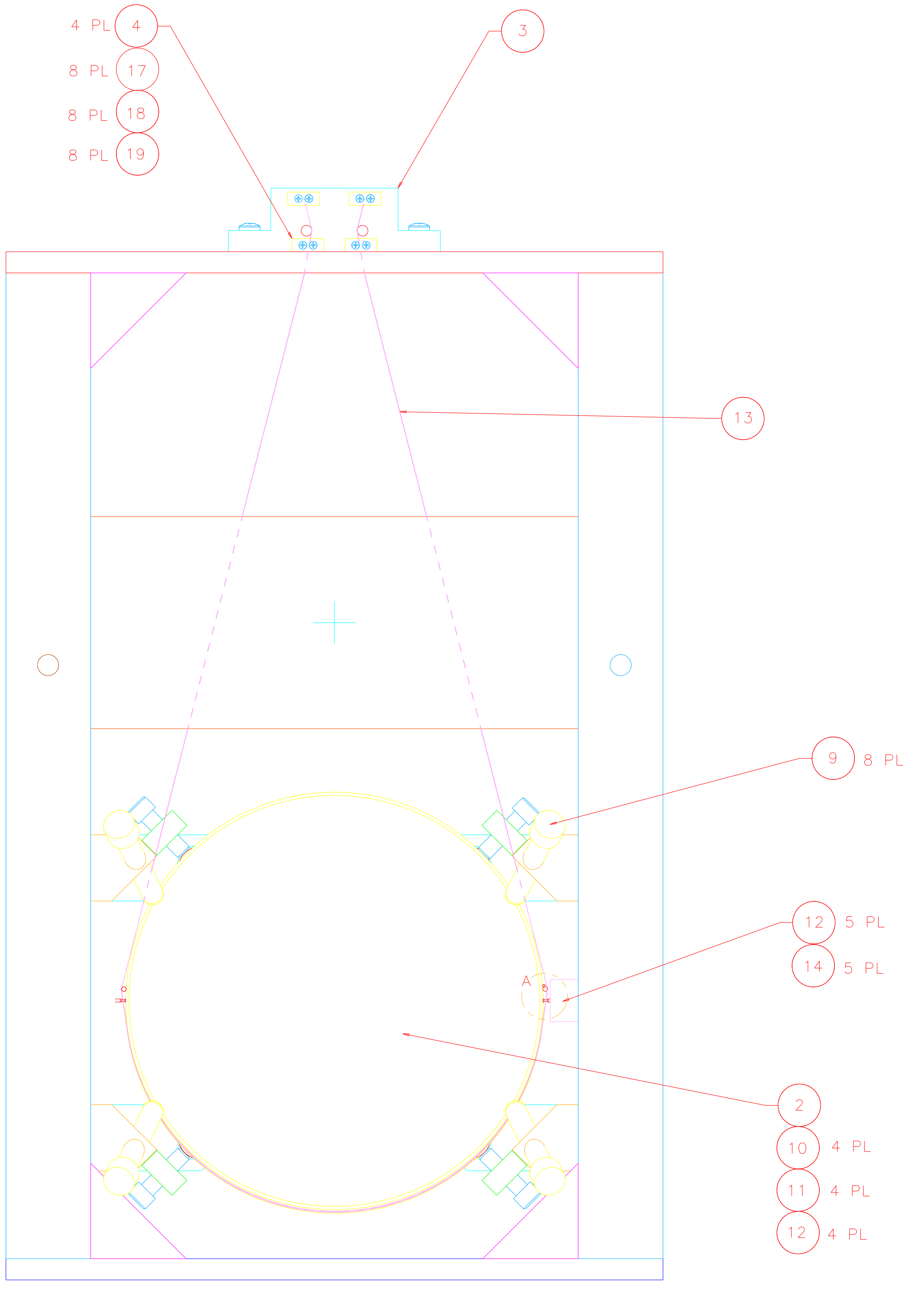
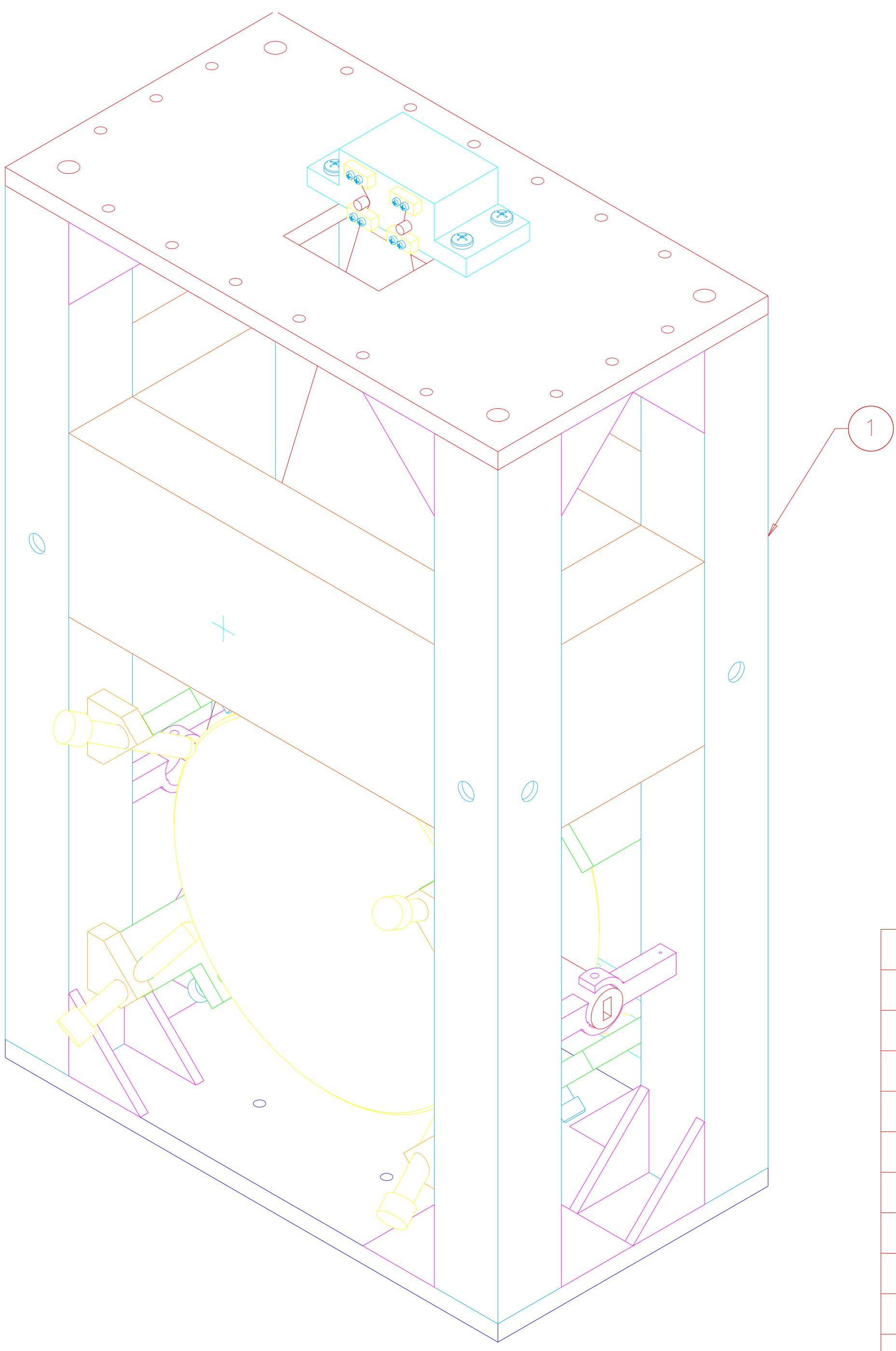
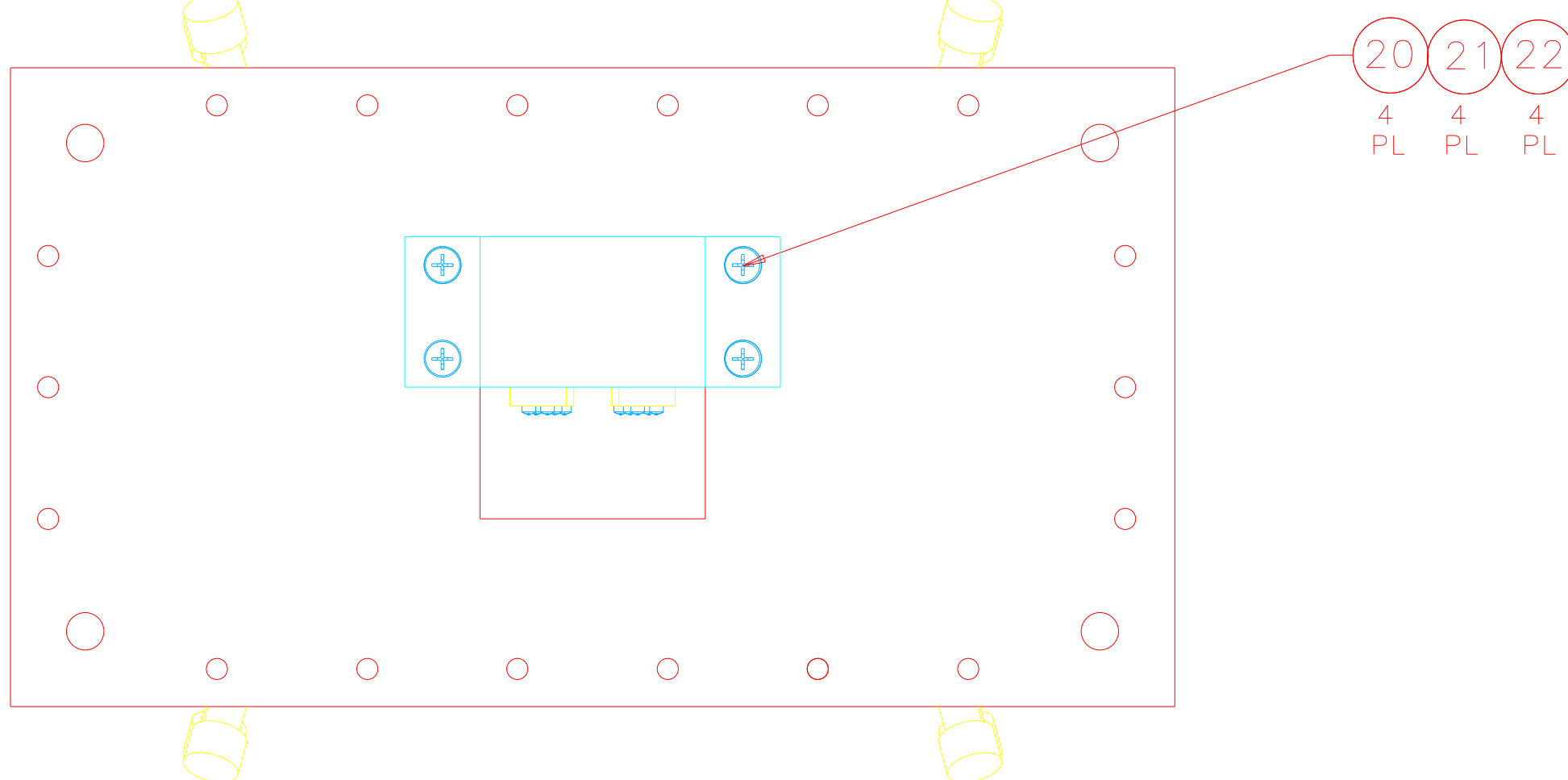


NOTES: (UNLESS OTHERWISE SPECIFIED)
 1. SPECIFICATIONS FOR THE CONSTRUCTION OF THIS ASSEMBLY ARE COVERED IN THE LARGE OPTIC SUSPENSION BALANCING SPECIFICATION, LIGO E970154.
 ② MATERIAL: CONDUCTIVE TEFLON, MANUF. BY FURON DIXON, 386 METACOM AVE., BRISTOL, RI, 02809, (401)253-2000, AND DESIGNATED BY THE NAME FURON DIXON COMPOUND 1042.
 ③ HEIGHT ADAPTER IS NOT SHOWN FOR CLARITY. IT IS BOLTED TO THE TOP OF THE LOS STRUCTURE ASSEMBLY USING THE HARDWARE ITEM NOS. 25-28. INSTRUCTIONS INCLUDED IN LIGO E970154.

REV	DATE	DRAWN BY	CHECKED	DCC	DCN/DESCRIPTION
A	1/19/98	J. Hazel			E980004/INITIAL RELEASE



ITEM NO.	QTY	DESCRIPTION	MATERIAL SPECIFICATION	UNIT	
		D970180	WINCH FIXTURE	41	
		D960761	FIXTURE, LIFTING	40	
		D970074	FIXTURE, MAGNET-TO-DUMPELL STANDOFF	39	
		D960763	FIXTURE, TEST MASS	38	
		D960752	FIXTURE, OPTICAL LEVELER	37	
		D960753	FIXTURE, WIRE AND OPTICS	36	
		D960147	FIXTURE, GUIDE ROD	35	
		D960050	FIXTURE, MAGNET/STANDOFF ASSY	34	
		D970169	MAGNET STRENGTH FIXTURE	33	
		D970616	COIL STRENGTH FIXTURE	32	
				31	
		D970615	PAM SCREW	30	
				29	
	18	1/4-20 x 1.5 LG SHCS	STAINLESS, Ag PLTD	28	
	18	1/4-20 LOCK WASHER	STAINLESS, AG PLTD	27	
	18	1/4-20 FLAT WASHER	STAINLESS, AG PLTD	26	
	12	1/4-20 HEX NUT	STAINLESS, Ag PLTD	25	
	1	D960145	HEIGHT ADAPTER	③ 24	
	A/R	EPOXY, VAC-SEAL		23	
	4	COMMERCIAL EQUIV NAS620416L	WASHER, FLAT, #1/4	STAINLESS	22
	4	COMMERCIAL EQUIV MS35338-139	WASHER, SPLIT LOCK, #1/4	STAINLESS	21
	4	U-C COMPONENTS P/N C-2016-NA	SCREW, SHCS, 1/4-20 x 1.00	STAINLESS, Ag PLTD	20
	8	COMMERCIAL EQUIV NAS620414L	WASHER, FLAT, #4	STAINLESS	19
	8	COMMERCIAL EQUIV MS35338-135	WASHER, SPLIT LOCK, #4	STAINLESS	18
	8	U-C COMPONENTS P/N C-412-NA	SCREW, SHCS, 4-40 x .75	STAINLESS, Ag PLTD	17
	8		SCREW, HEX HEAD, 3/8-16 x 1.50	② 15	
	6	U-C COMPONENTS P/N T-1003-NA	SET SCREW, SOCKET, 10-32 x .188	STAINLESS, Ag PLTD	14
	A/R	WIRE, ϕ .0120 \pm -.0003*		STAINLESS MUSIC	13
	5	D960138	SENSOR/ACTUATOR HEAD ASSEMBLY	12	
	4	D970075	DUMPELL STANDOFF	11	
	10	D960501	MAGNET	10	
	8	D960499	LOS CHAMFER STOP	9	
	2	D960149	LOS SIDE STANDOFF	8	
				7	
	2	D960755	LOS LARGE WIRE STANDOFF	6	
	1	D960146	LOS GUIDE ROD	5	
	4	D960134	LOS CLAMP, SUSPENSION BLOCK	4	
	1	D960144	LOS SUSPENSION BLOCK	3	
	1	POLISHING SPEC E960102	OPTIC, ϕ 25cm x 10cm THICK	END TEST MASS	2
	1	D960133	LOS STRUCTURE ASSEMBLY	1	

NEXT ASSEMBLY: FINAL
 FILE LOCATION: ~janeen/4nD960132a.asc

UNLESS OTHERWISE SPECIFIED DIMENSIONS ARE IN INCHES TOLERANCES ARE: FRACTIONS DECIMALS ANGLES

DO NOT SCALE DRAWING

MATERIAL: N/A
 FINISH: N/A

APPROVALS: J. Hazel
 DATE: 5/96

LIGO CALIFORNIA INSTITUTE OF TECHNOLOGY MASSACHUSETTS INSTITUTE OF TECHNOLOGY

TITLE: LARGE OPTIC SUSPENSION ASSEMBLY (LOS1a) FOR END TEST MASS

SIZE: E
 SCALE: 1/2

REV: A
 SHEET: 1 OF 1