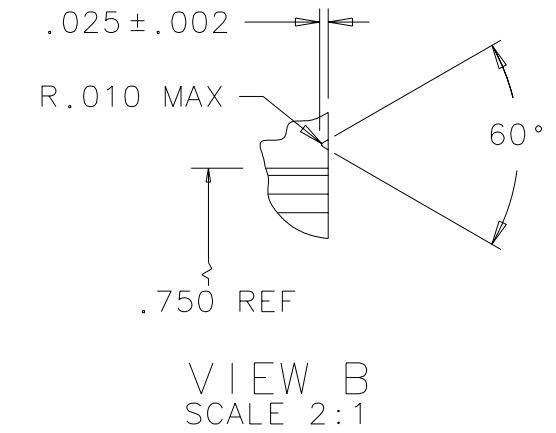
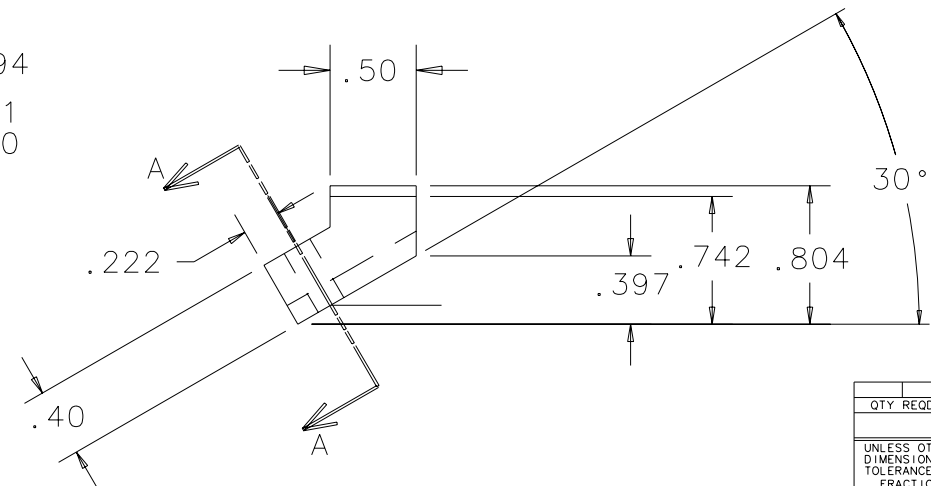
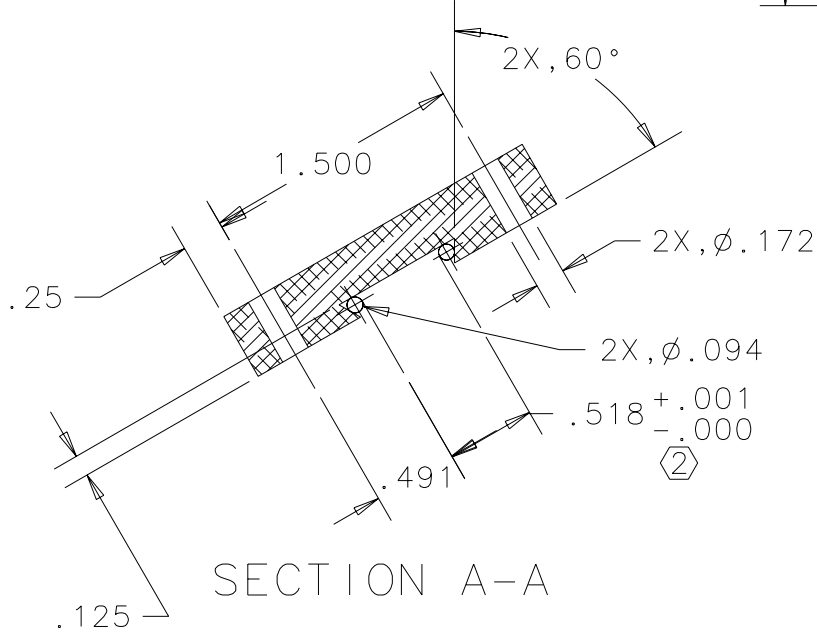
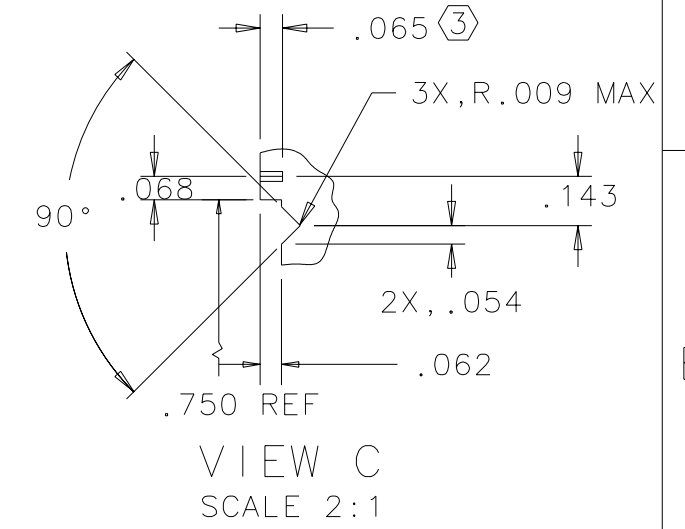
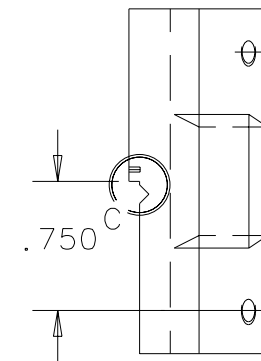
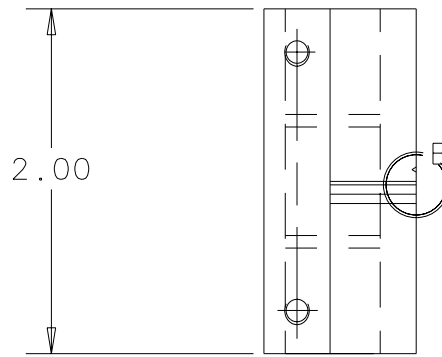


NOTES: (UNLESS OTHERWISE SPECIFIED)

- 1. THIS FIXTURE IS FOR AN OPTIC THAT IS $\phi 3.00$ " X 1.00" THICK (7.6cm x 2.5cm THICK) WITH A 0-30 MINUTE HORIZONTAL WEDGE.
- ② THIS PART TO BE A CLOSE SLIP FIT TO BASE PLATE, P/N D970017.
- ③ AN UNDERCUT AND/OR STAINLESS PIN MAY BE USED TO ACHIEVE THIS DIMENSION.

REV	DATE	DRAWN BY	CHECKED	DCC	DCN/DESCRIPTION
A	7-28-97	J. Hazel			E970121/INITIAL RELEASE



QTY REQD	PART OR IDENTIFYING NO	NOMENCLATURE OR DESCRIPTION	MATERIAL SPECIFICATION	ITEM NO
PARTS LIST				
UNLESS OTHERWISE SPECIFIED DIMENSIONS ARE IN IN (mm)		APPROVALS		DATE
TOLERANCES ARE:		DRAWN J. Hazel		1/96
FRACTIONS DECIMALS		CHECKED		
.XX = ±.03				
.XXX = ±.005				
ANGLES = ±P				
DO NOT SCALE DRAWING				
MATERIAL TEFLON		LIGO CALIFORNIA INSTITUTE OF TECHNOLOGY		MASSACHUSETTS INSTITUTE OF TECHNOLOGY
FINISH N/A		TITLE LEFT BLOCK, TOP		SIZE B
SCALE 1/1		FILENAME /home/dcc/docs/D960018.pdf		DWG NO. D960018-A-D
				SHEET 1 OF 1