

DEVELOPED VIEW

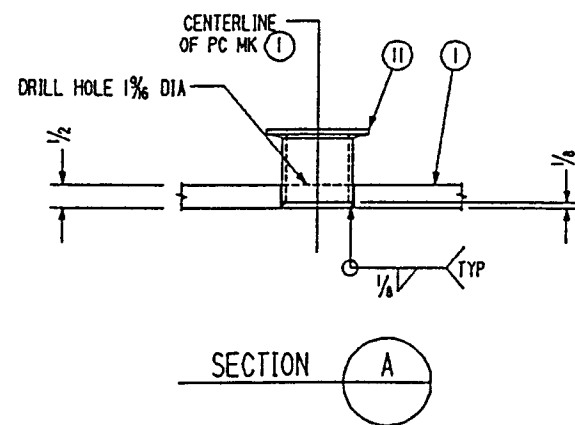
Date Received: 11/10/95	LIGO-D950080-04-B Contractor # CBI ER-122, Rev. 4
TIM #:	LIGO-
Date: / /	Approved:
TDM #:	LIGO-
Date: / /	Approved:
Gen'l Transmittal	LIGO-
Date: / /	Approved:

APPROVED

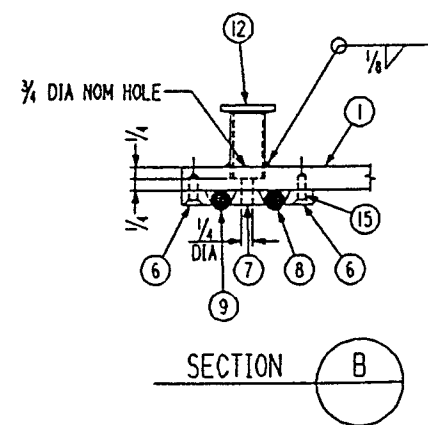
M. Jellalain 11/10/95
J. L. Ringelstetter 11/10/95

NOTES:

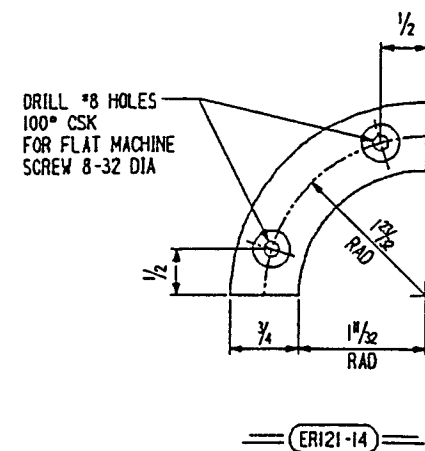
1. WORK THIS DWG WITH DWG ER-121.
2. ALL MACHINED SURFACES OF PC MK'S 13 AND 14 ARE 125 MICRONS.
3. SEE ER-121 FOR ROLL RADIUS.
4. HAND GRIND 1/16" DEEP GROOVES TO ALLOW FOR AIR PASSAGE. LOCATION NOT CRITICAL.



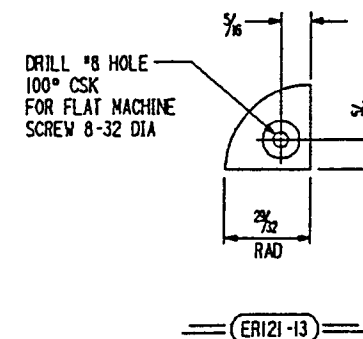
SECTION A



SECTION B



ER121-14



ER121-13

INDICATES CHANGE FROM PREVIOUS ISSUE

CAD FILE 30212122.DGN

Supplier's/Purchaser's No.		CBI	
LIGO PROJECT CIRCUMFERENTIAL LEAK TEST BOX DETAILS (FORMERLY ER-123)			
Customer's No.	Contract No.	Remarks	
By RVP Chkd CNS Date 6-1-94	930212ER		
J. L. RINGELSTETTER Engineering Supervisor	Dwg. ER-122 Sheet - 4		
LIGO-D950080-04-B			