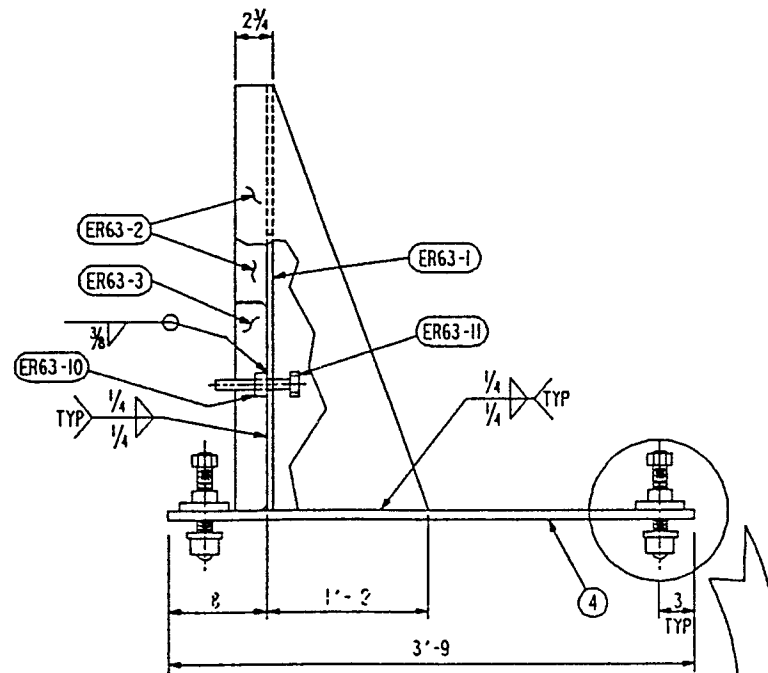
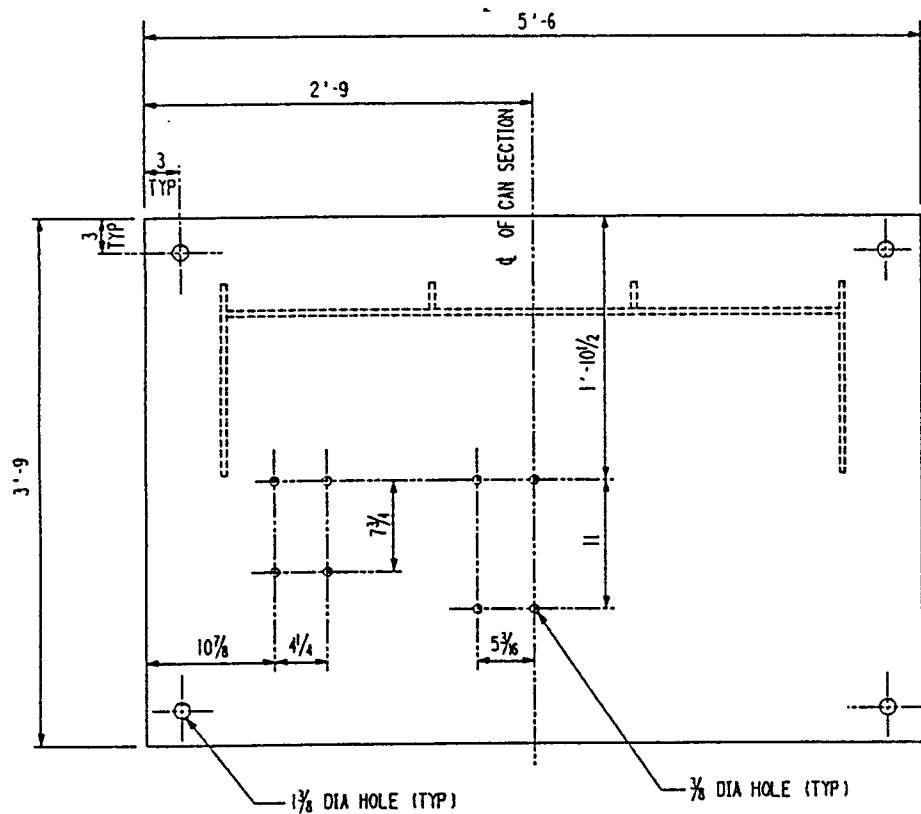


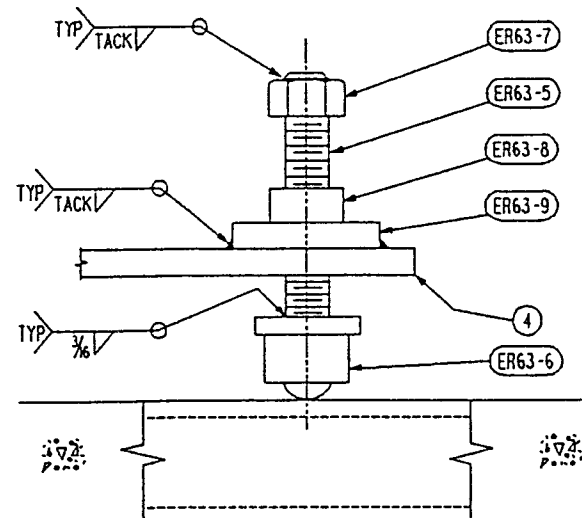
ELEVATION VIEW (A)



SIDE VIEW (A)



(A)



SUB ASSY →
ASSY DWG
ER-72

#	MARK	ASSY PC	DESCRIPTION	LENGTH		SPEC	EST WEIGHT
				FT	INCHES		
1	ER73-A		ROLLING BASE SUBASSEMBLY				X
	ER63-1	1	PLATE SK X 1/2 (CF 43" X 4'-4 1/8")			A36	X
	ER63-2	2	PLATE SK X 1/2 (CF 19" X 3'-7 C2)			A36	X
	ER63-3	2	PLATE 2 1/4 X 1/2 BOE 20°	1	11 1/8	A36	X
	ER72-4	1	PLATE 45 X 1/2 X SK	5	6	A36	X
	ER63-5	4	ACME ROD 1/4 DIA - STPI RIGHT-HAND THD "McMASTER-CARR" NO. 98935A131	0	6	CARB STL	X
	ER63-6	4	FLANGE MOUNTED UNIT - 1/2 DIA BALL TRANSFER HIGH CAP. "McMASTER-CARR" NO. 2415T64 ZINC PLATED			CARB STL	X
	ER63-7	4	ACME NUT 1/4 DIA - STPI RIGHT-HAND THD "McMASTER-CARR" NO. 94815A116			CARB STL	X
	ER63-8	4	ACME BRONZE ROUND NUT 1/4 DIA - STPI RIGHT-HAND TRD "McMASTER-CARR" NO. 95072A118			BRONZE	X
	ER63-9	4	ACME MOUNTING FLANGE 1/4 DIA "McMASTER-CARR" NO. 95082A645			CARB STL	X
	ER63-10	1	PLATE SK X 1" (CF 3 X 0'-3 C1)			A36	X
	ER63-11	1	BOLT 1" DIA REG FIN HEX HEAD THREAD FULL LENGTH	0	6	A307B	X

* BILLING FOR 1 + 3 REQUIRED.

APPROVED

M. Jellalain 11/10/95
 CBI DATE

J. L. Rimstetter 11/10/95
 CALIF. DATE

NOTES:

- WORK THIS DWG WITH DWG ER-63 AND ER-72.

C:\AD FILE\30212073.DGN

Date Received: 11/10/95	LIGO- D950073-02-B Contractor # CBI ER-73, Rev. 2
TIM #:	LIGO-
Date: / /	Approved:
TDM #:	LIGO-
Date: / /	Approved:
Gen'l Transmittal	LIGO-
Date: / /	Approved:

▶ INDICATES CHANGE FROM PREVIOUS ISSUE

Supplier's/Purchaser's No.	
LIGO PROJECT LEAK TEST ARRANGEMENT COLD TRAP END SEAL ROLLING BASE SUBASSEMBLY	
Customer's No.	Contract No.
By BSA Chkd RDS Date 3-15-94	930212ER
J. L. RIMSTETTER Engineering Supervisor	Dwg. ER-73 Sheet - 2
LIGO-D950073-02-B	