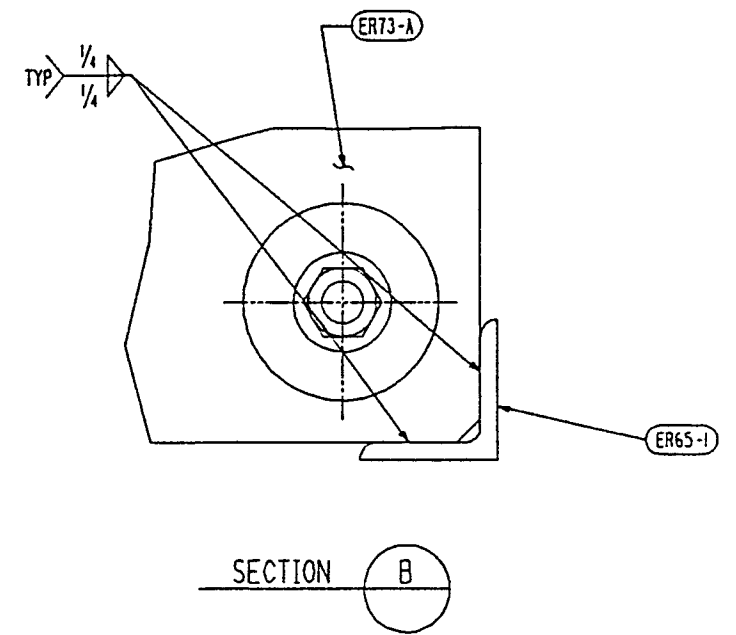
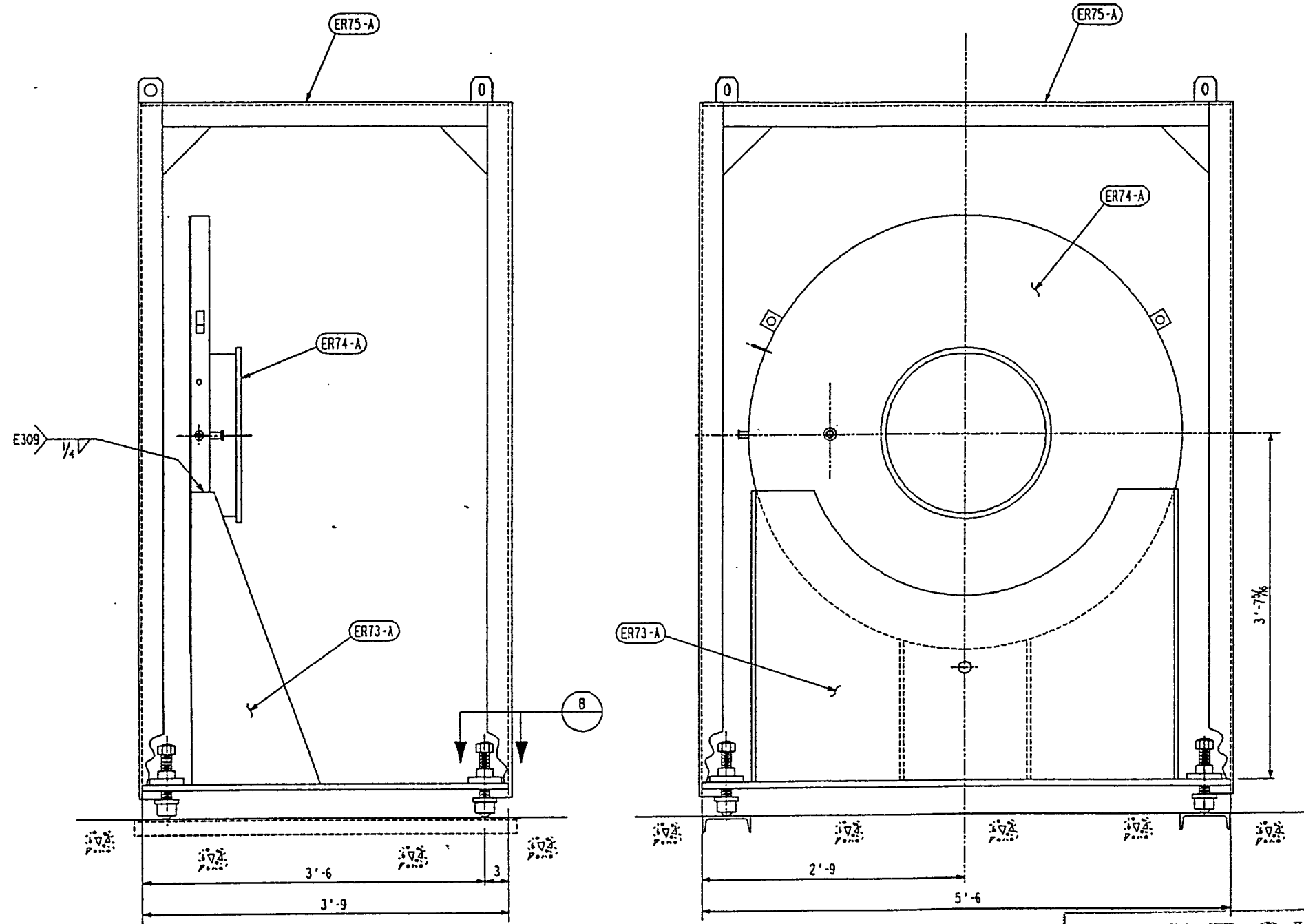


SHP PC	MARK	ASSY PC	DESCRIPTION	LENGTH		SPEC	EST WEIGHT
				FT	INCHES		
* 1	ER72-A		CARRIAGE SUBASSEMBLY				X
	ER73-A	1	ROLLING BASE SUBASSY				X
	ER74-A	1	END CAP SUBASSEMBLY				X
	ER75-A	1	LIFTING FRAME SUBASSEMBLY				X

* BILLING FOR 1 + 3 REQUIRED.



NOTES:

1. WORK THIS DWG WITH DWG ER-73, ER-74 AND ER-75.

RIGHT SIDE VIEW

Date Received:	11/10/95	LIGO-D950072-02-B
TIM #:	LIGO-	Contractor #: CBI ER-72, Rev-2
Date:	/ /	Approved:
TDM #:	LIGO-	
Date:	/ /	Approved:
Gen'l Transmittal	LIGO-	
Date:	/ /	Approved:

APPROVED

M. Jellalain 11/19/95
CBI DATE

P. Jones 11/10/95
CBI DATE

Supplier's/Purchaser's No.	
CBI	
LIGO PROJECT LEAK TEST ARRANGEMENT	
COLD TRAP SEAL END CARRIAGE SUBASSEMBLY	
Customer's No.	Contract No.
By BSA Chkd RDS Date 3-15-94	930212ER
J.L. RINSELSTETTER Engineering Supervisor	Dwg. ER-72 Rev. 2 Sheet 2
LIGO-D950072-02-B	

INDICATES CHANGE FROM PREVIOUS ISSUE

CAD FILE 3021072.DGN