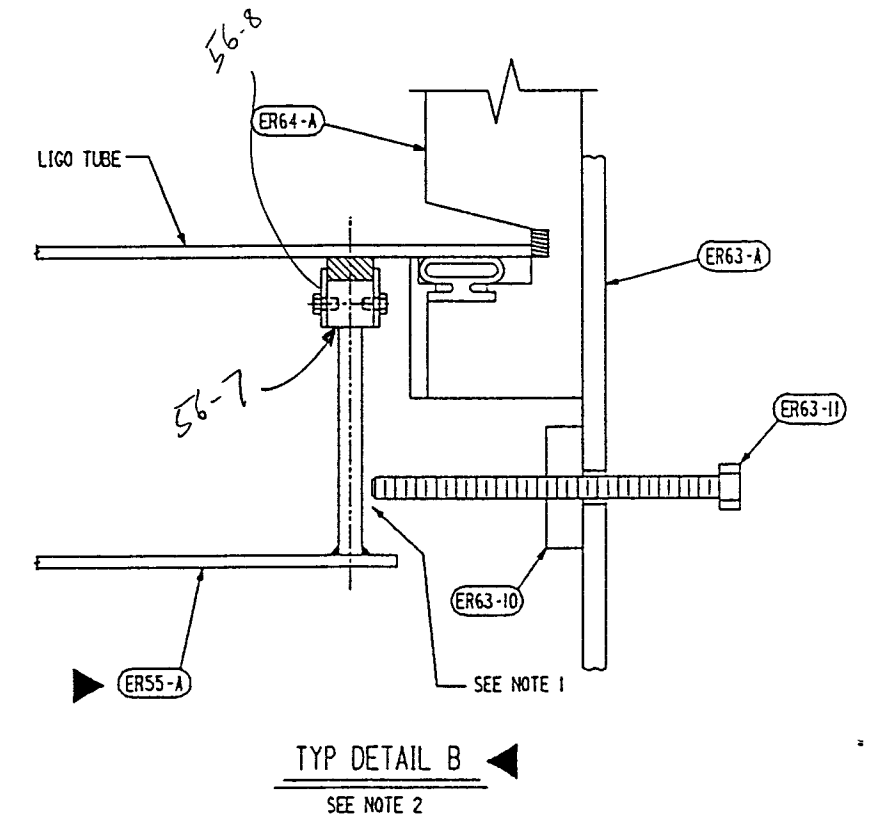


ELEVATION VIEW



TYP DETAIL B
SEE NOTE 2

NOTES:

1. 1/4 GAP BEFORE VACUUM IN LIGO TUBE. BOLT (ER63-11) BEARS AGAINST HELIUM HOOD DURING VACUUM.
2. TYP DETAIL AT 180° (BOTTOM). DETAIL SIMILAR AT 60° AND 300° EXCEPT PC (ER63-10) IS WELDED TO (ER64-A).
3. WORK THIS DWG WITH DWG ER-60 AND ER-61.

Date Received: 11/10/95	LIGO-D950070-02-B Contractor #: CBI ER-70, Rev. 2
TIM #:	LIGO-
Date: / /	Approved:
TDM #:	LIGO-
Date: / /	Approved:
Gen'l Transmittal	LIGO-
Date: / /	Approved:

APPROVED

M. Jellalain 11/10/95
CBI DATE

J. Jones 11/10/95
CALTON DATE

CAD FILE 30212070.DGN

Supplier's/Purchaser's No.	
CBI	
LIGO PROJECT LEAK TEST ARRANGEMENT COLD TRAP END SEAL	
Customer's No.	Contract No.
By BSA Chkd RDS Date 3-15-94	930212ER
J.L. RWELSTETTER Engineering Supervisor	Dwg. ER-70 Rev. 2 Sheet - 2
LIGO-D950070-02-B	

INDICATES CHANGE FROM PREVIOUS ISSUE