

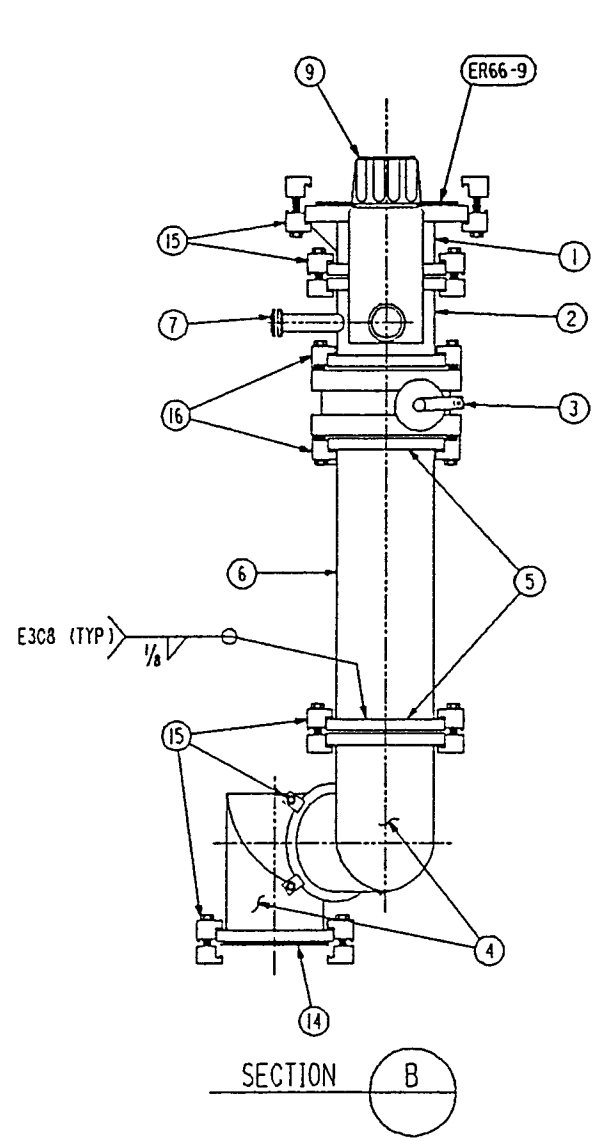
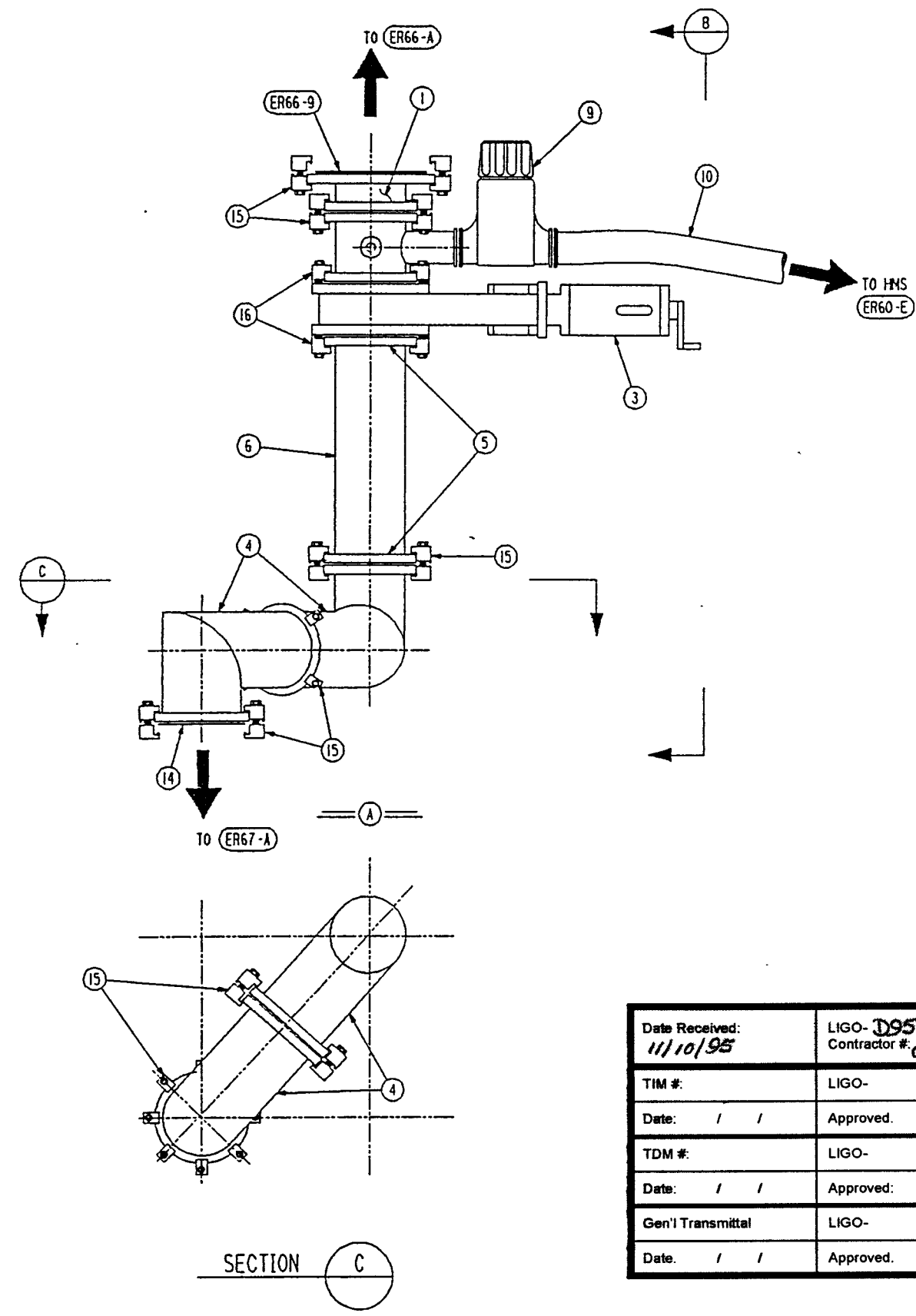
SUB ASSY
ASSY DWG
ER-61

MARK	ASSY PC	DESCRIPTION	LENGTH		SPEC	EST WEIGHT
			FT	INCHES		
* 1	ER68-A	CROSS-OVER LINE SUBASSEMBLY				X
	ER68-1	1 "K" ISO 160 TO ISO 100 REDUCER "LESKER" PART NO. QF100X160 OR EQUAL	0	2 ⁹ / ₁₆	STN STL	X
	ER68-2	1 MEASURING PIECE DN 100 ISO-K (4 INCH) "BALZERS" ORDER NO. BP 217 566-X OR EQUAL	0	4 ¹ / ₄	STN STL	X
	ER68-3	1 LHY GATE VALVE DN 100 ISO-F (4 INCH) W/MANUAL ACTUATOR - "VAT" SERIES 10 ORDERING NO. 10840-PE01 OR EQUAL	0	2 ³ / ₄	STN STL	X
	ER68-4	2 90° MITERED ELBOW "K"-ISO 100 (4 INCH) "LESKER" PART NO. QF100-E90K OR EQUAL	0	4 ¹ / ₄	STN STL	X
	ER68-5	2 FLANGE "K" WELD DN 100 ISO-K (4 INCH) "LESKER" PART NO. QF100-SMK OR EQUAL	0	5 ¹ / ₂	STN STL	X
	ER68-6	1 TUBE 4 OD X 1 ¹ / ₁₆ PBE	0	5 ¹¹ / ₁₆	STN STL	X
	ER68-7	1 BLANKING FLANGE DN 10 ISO-KF "BALZERS" ORDER NO. BP 212 015 OR EQUAL	0	1 ¹ / ₄	STN STL	X
	ER68-8	1 CLAMPING RING DN 10 ISO-KF "BALZERS" ORDER NO. BP 217 426-T OR EQUAL			ALUM	X
	ER68-9	1 KF BELLOWS-SEALED STRAIT-THROUGH VALVE W/QUICK-ACTING KNOB - MANUALY OPERATED DN 40 KF "LEYBOLD" CAT. NO. 289 13 OR EQUAL	0	5 ¹ / ₈	STN STL	X
	ER68-10	1 FLEXIBLE METAL HOSE DN 40 ISO-KF 1000 MM -LENGTH NOM. "BALZERS" ORDER NO. BP 217 498-X OR EQUAL	3	4	STN STL	X
	ER68-11	2 CLAMPING RING DN 40 ISO-KF "BALZERS" ORDER NO. BP 217 428-T OR EQUAL			ALUM	X
	ER68-12	2 CENTERING RING DN 40 ISO-KF "BALZERS" ORDER NO. BP 213 143-T OR EQUAL			STN/VTON	X
	ER68-13	1 CENTERING RING DN 10 ISO-KF "BALZERS" ORDER NO. BP 213 265-T OR EQUAL			STN/VTON	X
	ER68-14	6 STAINLESS/AL CENTERING RING (BUNA-N) FOR ISO FLANGE SIZE 100 (4 INCH) "LESKER" PART NO. QF100-SABR OR EQUAL			STN/AL	X
	ER68-15	40 AL DOUBLE CLAMP "K"-STYLE FOR ISO FLANGE SIZE 100 (4 INCH) "LESKER" PART NO. QF-SDC-AL1 OR EQUAL				X
	ER68-16	16 AL SINGLE CLAMP (METRIC) "F"-STYLE FOR ISO FLANGE SIZE 100 (4 INCH) THREAD M8 "LESKER" PART NO. QF-SSC-ALM PART NO. QF-SSC-ALM OR EQUAL				X
	ER66-9	1 STAINLESS/AL CENTERING RING (BUNA-N) FOR ISO FLANGE SIZE 160 16 INCH) "LESKER" PART NO. QF160-SABR OR EQUAL	0	5 ¹ / ₂	STN/AL	X

* BILLING FOR 1 + 3 REQUIRED.

NOTES:

1. WORK THIS DWG WITH DWG ER-61.
2. THE O-RING WHICH CAN ALLOW HELIUM TO PERMEATE TO THE HMS MUST BE BAGGED AND PURGED WITH NITROGEN OR REPLACED WITH METAL SEAL IF HELIUM PERMEATED PREVENTS LEAK TESTING TO A SENSITIVITY OF 1 X 10⁻⁴ atmcc/sec.



Date Received: 11/10/95	LIGO-D950068-02-B Contractor #: CBI ER-68, Rev. 2
TIM #:	LIGO-
Date: / /	Approved:
TDM #:	LIGO-
Date: / /	Approved:
Gen'l Transmittal	LIGO-
Date: / /	Approved:

APPROVED

M. Jellalian 11/14/95
CBI DATE

J. Jones 11/10/95
CALTECH DATE

Supplier's/Purchaser's No.	
CBI	
LIGO PROJECT LEAK TEST ARRANGEMENT	
VACUUM PUMP END SEAL CROSS-OVER LINE SUBASSEMBLY	
Customer's No.	Contract No.
By BSA Chkd ROS Date 3-11-94	930212ER
J. L. RINGELSTEITER Engineering Supervisor	Dwg. ER-68 Rev. 2 Sheet - 2
LIGO-D950068-02-B	

CAD FILE 30212068.DGN

INDICATES CHANGE FROM PREVIOUS ISSUE