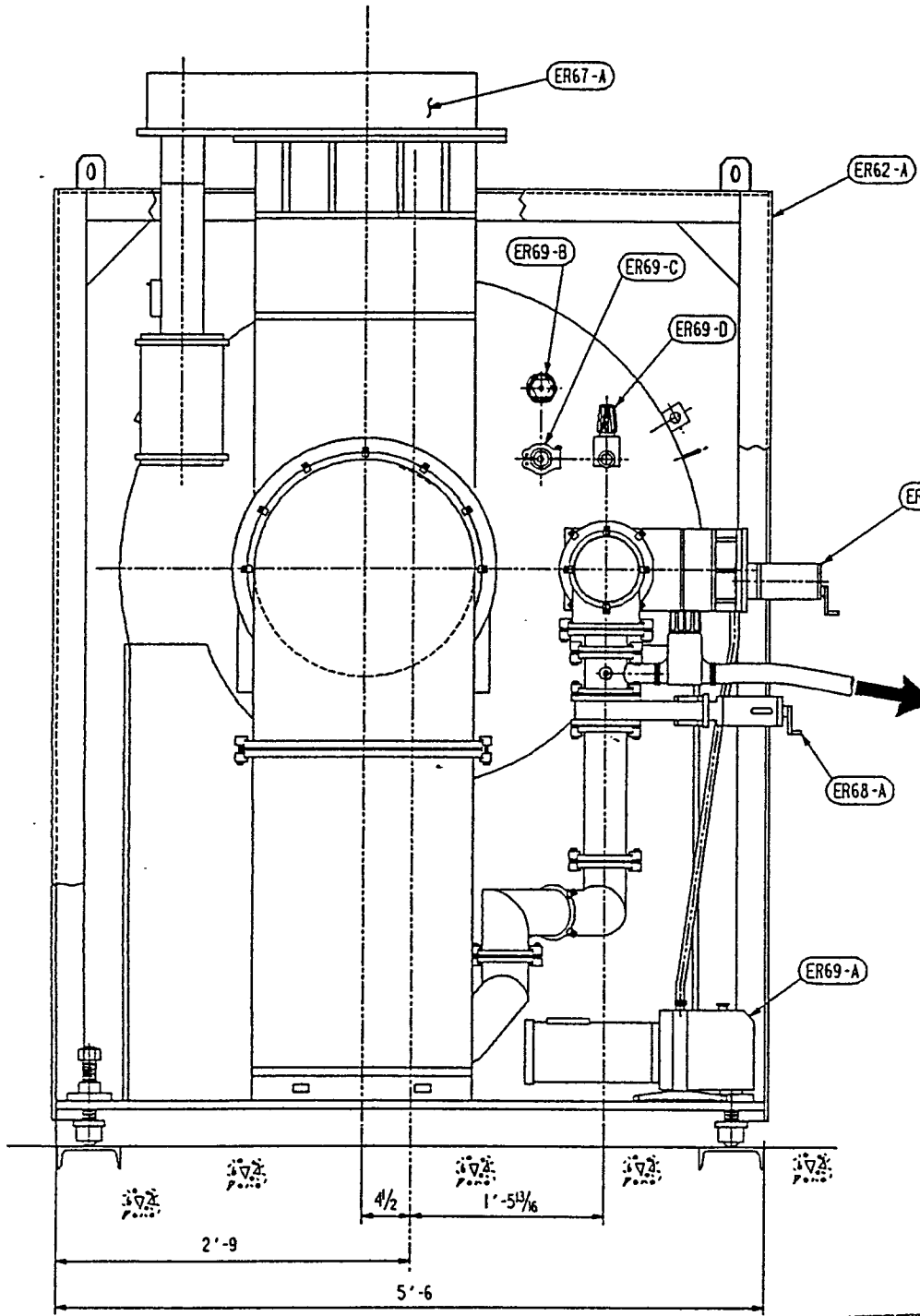


Date Received: 11/10/95 LIGO- D950061-02-B
 Contractor # CBI ER-61, Rev. 2

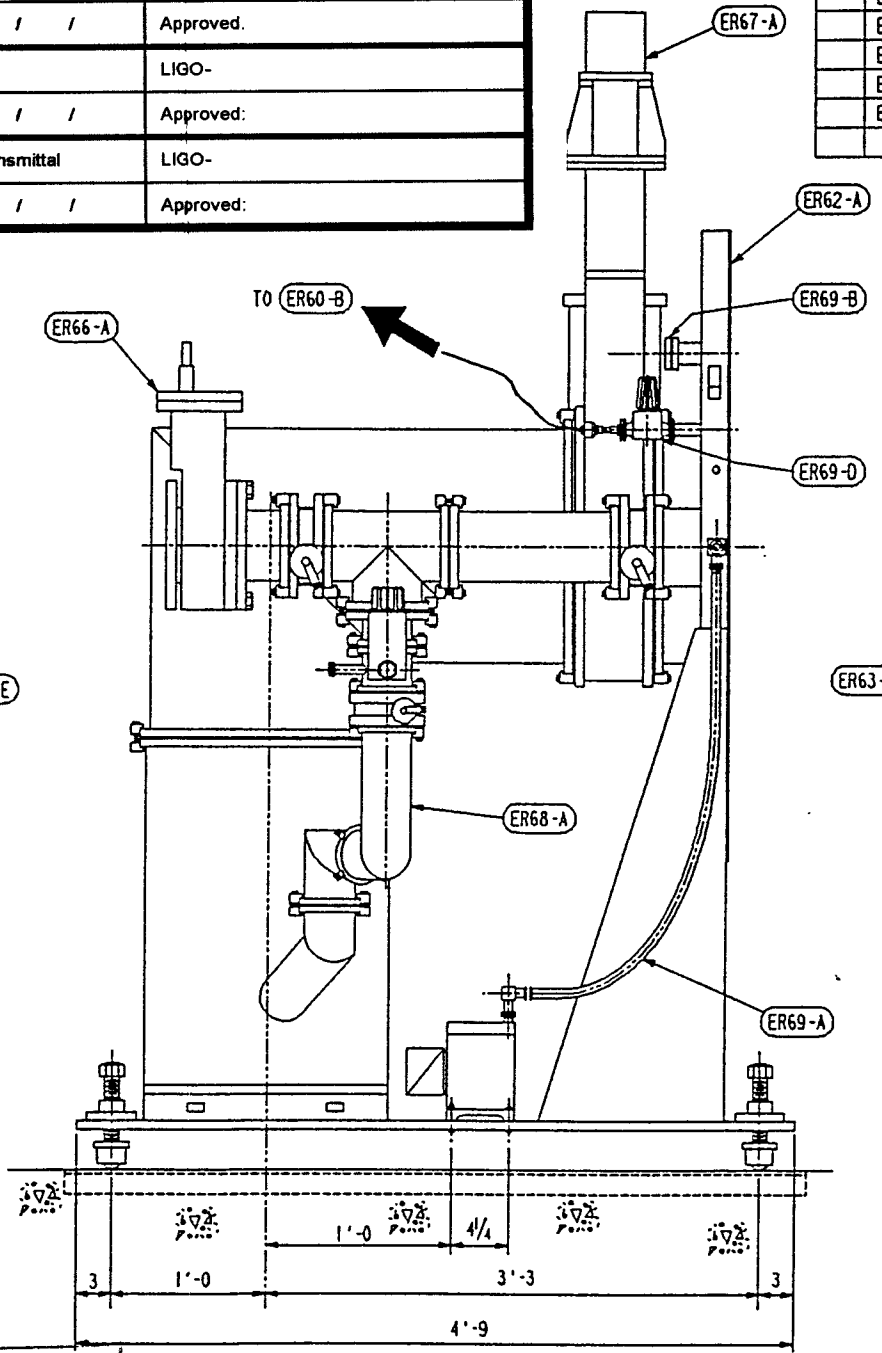
TIM #: LIGO-
 Date: / / Approved:
 TDM #: LIGO-
 Date: / / Approved:
 Gen'l Transmittal LIGO-
 Date: / / Approved:

#	MARK	ASSY PC	DESCRIPTION	LENGTH		SPEC	EST WEIGHT
				FT	INCHES		
ER61-A		1	VACUUM END SEAL ASSEMBLY				X
ER62-A		1	CARRIAGE SUBASSEMBLY				X
ER66-A		1	MECHANICAL VACUUM LINE SUBASSEMBLY				X
ER67-A		1	DIFFUSION PUMP LINE SUBASSEMBLY				X
ER68-A		1	CROSSOVER LINE SUBASSEMBLY				X
ER69-A		1	INTERSPACE VACUUM PUMP LINE SUBASSY				X
ER69-B		1	RGA LINE SUBASSEMBLY				X
ER69-C		1	IONIZATION GAUGE TUBE SUBASSEMBLY				X
ER69-D		1	THERMAL CONDUCTIVITY GAUGE TUBE SUBASSEMBLY				X

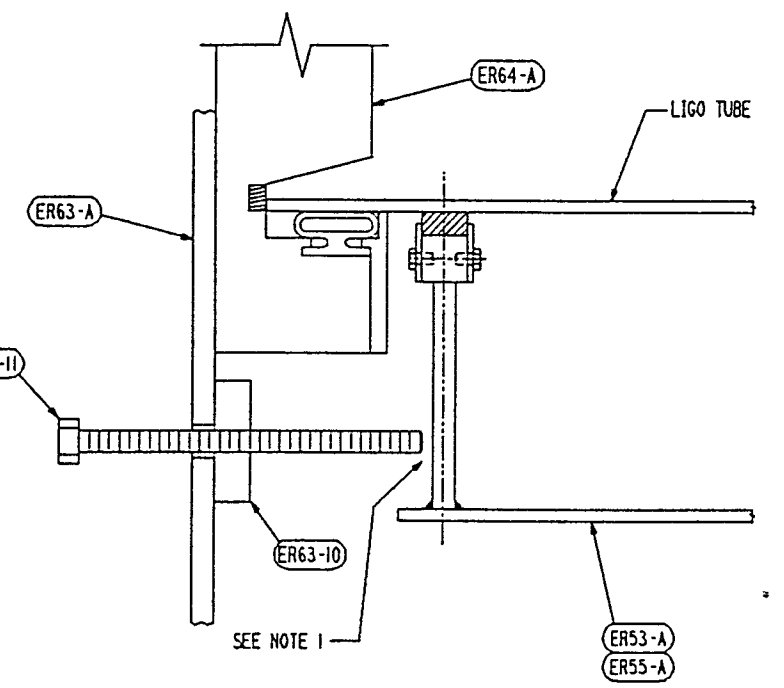
* BILLING FOR 1 + 3 REQUIRED.



ELEVATION VIEW



LEFT SIDE VIEW
 LIFTING FRAME OMITTED FOR CLARITY



TYP DETAIL B
 SEE NOTE 2

NOTES:

1. 1/4 GAP BEFORE VACUUM IN LIGO TUBE. BOLT (ER63-11) BEARS AGAINST HELIUM HOOD DURING VACUUM.
2. TYP DETAIL AT 180° (BOTTOM). DETAIL SIMILAR AT 60° AND 300° EXCEPT PC (ER63-10) IS WELDED TO (ER64-A).

APPROVED

M. Jellalian 11/10/95
 CBI DATE

J. Jones 11/10/95
 CALTECH DATE

Supplier's/Purchaser's No.		Contract No. 930212ER	
Customer's No.		By BSA Chkd RDS Date 3-10-94	
J. L. RINGELSTETTER Engineering Supervisor		Dwg. ER-61 Rev. 2 Sheet - 2	
LIGO - D950061-02-B			

CAD FILE 30212061.DGN

INDICATES CHANGE FROM PREVIOUS ISSUE