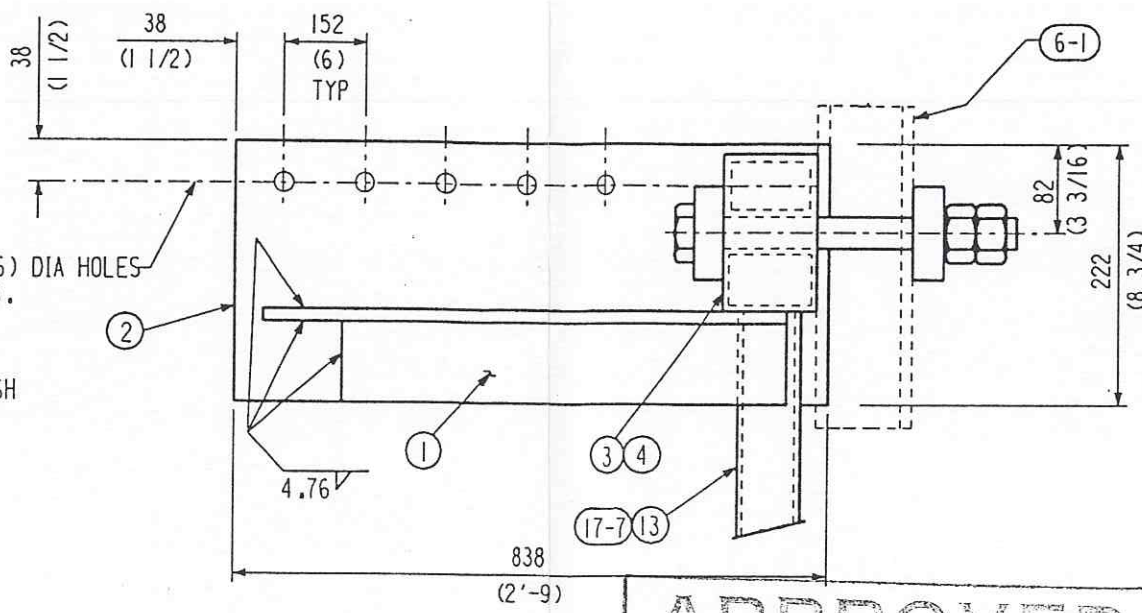
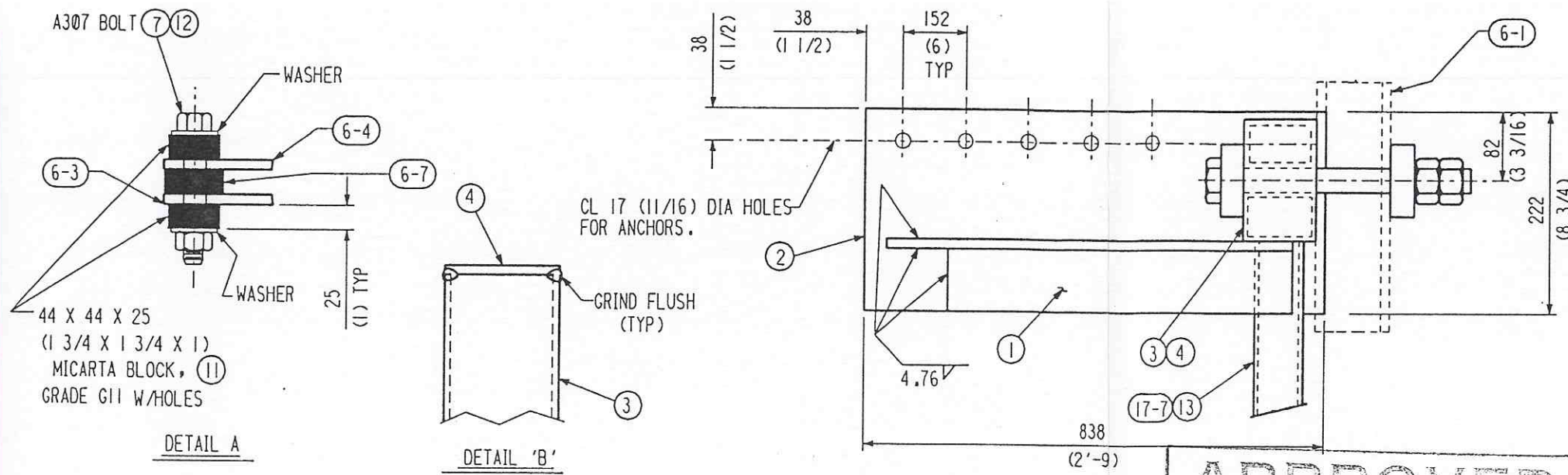


Date Rec'd: 11/10/95
 LIGO-D950037-05-B
 Contractor: CBI & KEI, S
 Date: 3/12/96
 Approved: [Signature]
 LIGO-C960675-00-V
 Approved: [Signature]
 TDM: [Signature]
 Date: / /
 LIGO- / /
 Approved: / /
 Gen'l Transmittal / /
 Approved: / /
 LIGO- / /
 Approved: / /

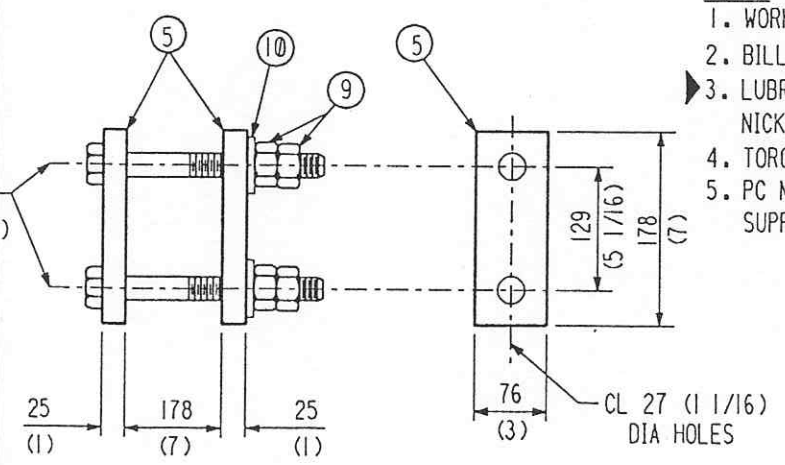
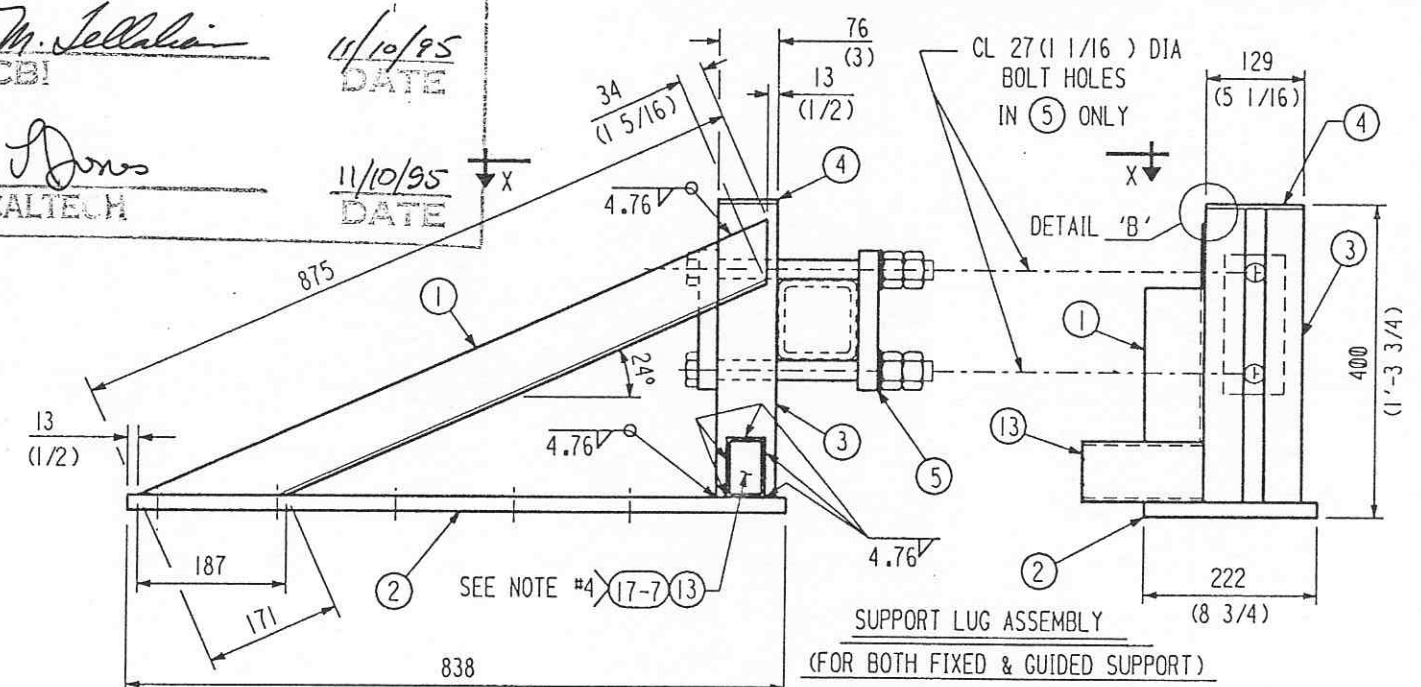
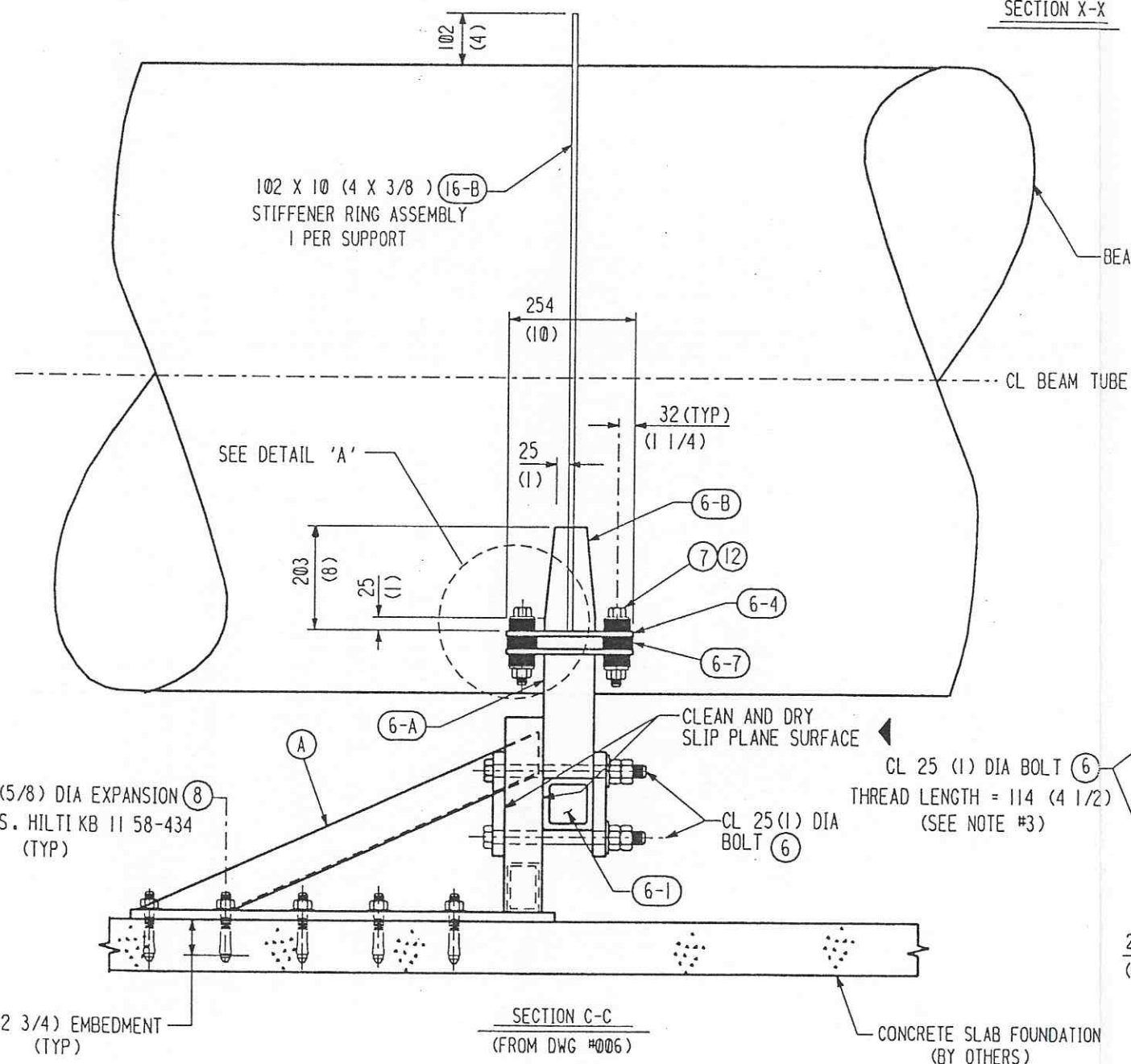


APPROVED

M. Jellalian 11/10/95
 CBI DATE

Dono 11/10/95
 CALTECH DATE

SHP PC	MARK	ASSM PC	DESCRIPTION	LENGTH MM	SPEC	ID
2	8-A		FIXED SUPPORT LUGS			
	8-1	2	L 76 X 76 X 5 X SK (L 3 X 3 X 3/16)	875	A36	
	8-2	2	PL 222 X 19 THK (8 3/4 X 3/4)	838	A36	
			W/HOLES (2'-9)			
	8-3	4	TUBULAR STEEL 76 X 50 X 5 (3 X 2 X 3/16)	375	A500 Gr B	
				1'-2 3/4		
	8-4	2	PL 76 X 6 (3 X 1/4)	127 (5)	A36	
	8-13	1	TUBULAR STEEL 76 X 50 X 5 (3 X 2 X 3/16)	683	A500 Gr B	
				2'-2 7/8		
4	8-5		PL 76 X 25 THK (3 X 1) W/HOLES	178 (7)	A36	
4	8-6		BOLT 25 (1) DIA HVY HEX THREAD LENGTH = 114 (4 1/2)	279	A325	
				11		
4	8-7		BOLT 19 (3/4) DIA HVY HEX W/HEX NUTS	127 (5)	A307	
10	8-8		EXPANSION ANCHORS 15 (5/8) DIA HILTI KB11 58-434 W/70 (2 3/4)	120	CS	
				(4 3/4)		
			EMBEDMENT DEPTH OR EQ.			
8	8-9		25 (1) HVY HEX NUT		A325	
4	8-10		25 (1) WASHER		CS	
8	8-11		MICARTA BLOCK 44 X 44 X 25 W/7/8 DIA HOLES (1 3/4 X 1 3/4 X 1) GRADE G11			
4	8-12		MYLAR INSULATING SLEEVE 3/4" I.D. X 1/32" THK. (FROM F.H.MALONEY CO.)	89	MYLAR	
				(3 1/2")		



- NOTES
1. WORK THIS DWG WITH DWG #006, 007 AND 009.
 2. BILLED FOR ONE (1) FIXED SUPPORT. TOTAL OF 392 FIXED SUPP REQD.
 3. LUBRICATE BOLT THREADS AND BEARING SURFACE OF NUTS WITH LOCTITE NICKEL ANTI-SEIZE 771.
 4. TORQUE BOLTS (8-6) TO 200 FT /#
 5. PC MK (13) FOR FIXED SUPPORT ONLY, AND PC MK (17-7) FOR GUIDED SUPP ONLY.

REV	DATE	BY	CHKD	DATE	REVISIONS	REMARKS
1	12-7-94	WAW	CHKO	12-7-94	REV PC MK 6 AND 7 ADDED PC MK 12	
2	5-14-95	WAW	CHKO	5-14-95	ADDED NOTE 3 AND AS INDICATED	
3	5-14-95	WAW	CHKO	5-14-95	ADD SUB-ASSEMBLY ID ADD DET ADD PIECE MARKS	

CBI		SUPPLIER'S / PURCHASER'S NO	
SUPPORT LUG ASSY & SECTION DETAILS			
BEAM TUBE FIXED/GUIDED SUPPORT			
LIGO			
HANFORD, WA. AND LIVINGSTON, LA.			
CUSTOMER'S NO		CONTRACT NO	
BY WAW CHKO DET DATE 3-8-94		930212	
D.E. THONN		DWG 008 REV 5	
ENGINEERING ASSIGNED		SHT	
LIGO-D950037-05-B			

INDICATES CHANGE FROM PREVIOUS ISSUE

3212A008