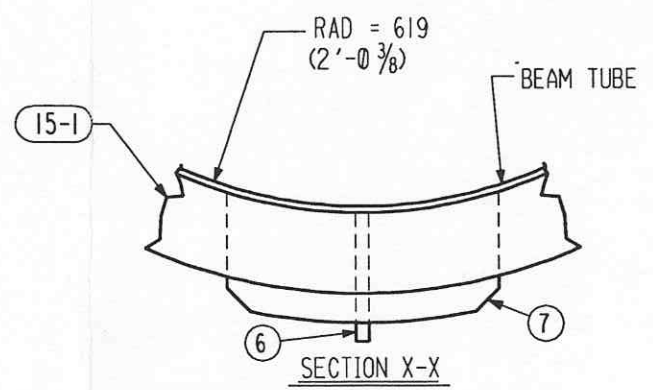
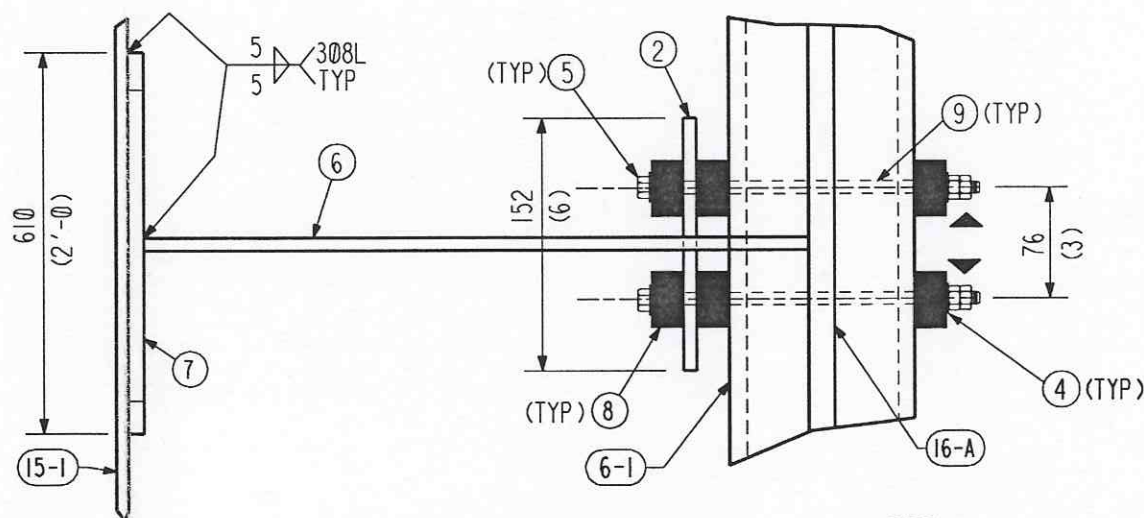
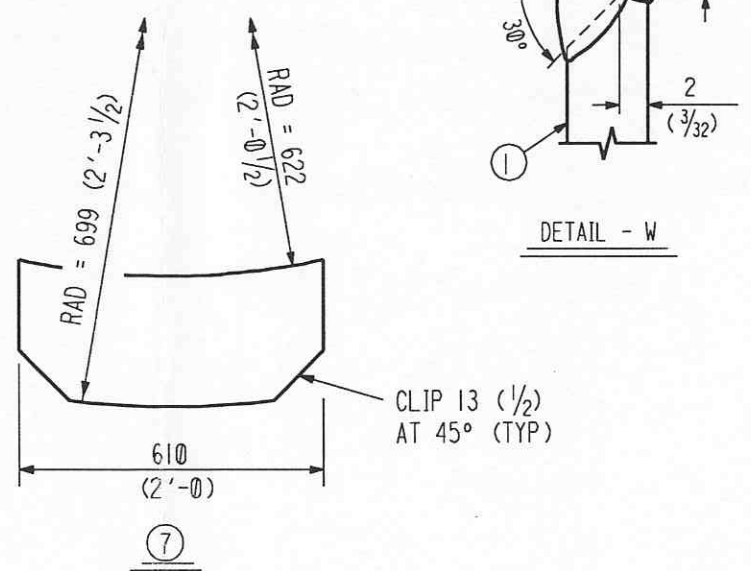
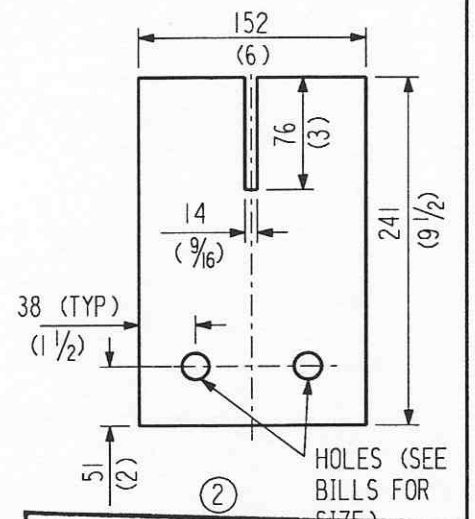


THIS FACE OF ALL PC. (8-3) WILL BE IN SAME PLANE WITHIN 3 (1/8)



SHP PC	MARK	ASSM PC	DESCRIPTION	LENGTH MM	SPEC	ID
			FIXED SUPPORT (AWAY FROM TERM.)			
1	7-1		PL SK X 13 (1/2)		***	C
1	7-2		PL SK X 13 (1/2) W/ 21 (13/16)		***	C
			DIA HOLES			
4	7-4		WASHER 16 (5/8) DIA		F436	AC
2	7-5		BOLT 16 (5/8) DIA HVY HEX W/ 2 NUTS	241	*	AC
				(9 1/2)		
1	7-6		PL 102 X 13 (4 X 1/2 X 2'-5 9/16)	751	***	C
1	7-7		PL SK X 5 (3/16)		***	C
6	7-8		MICARTA BLOCK 44 X 44 X 25 (1 3/4 X 1 3/4 X 1) W/ 22 (7/8) DIA HOLE		GRADE G11	C
2	7-9		INSULATING SLEEVE 16 (5/8) ID X 1/32 THK (FROM F.H. MALONEY CO.)	178 (7)	MYLAR	C
			* = A325 TYPE 3 (NOT GALV.)			
			*** = SA240 TP304L			



APPROVED
M. Tellalian 6-28-96
 CBI DATE
 CALTECH DATE

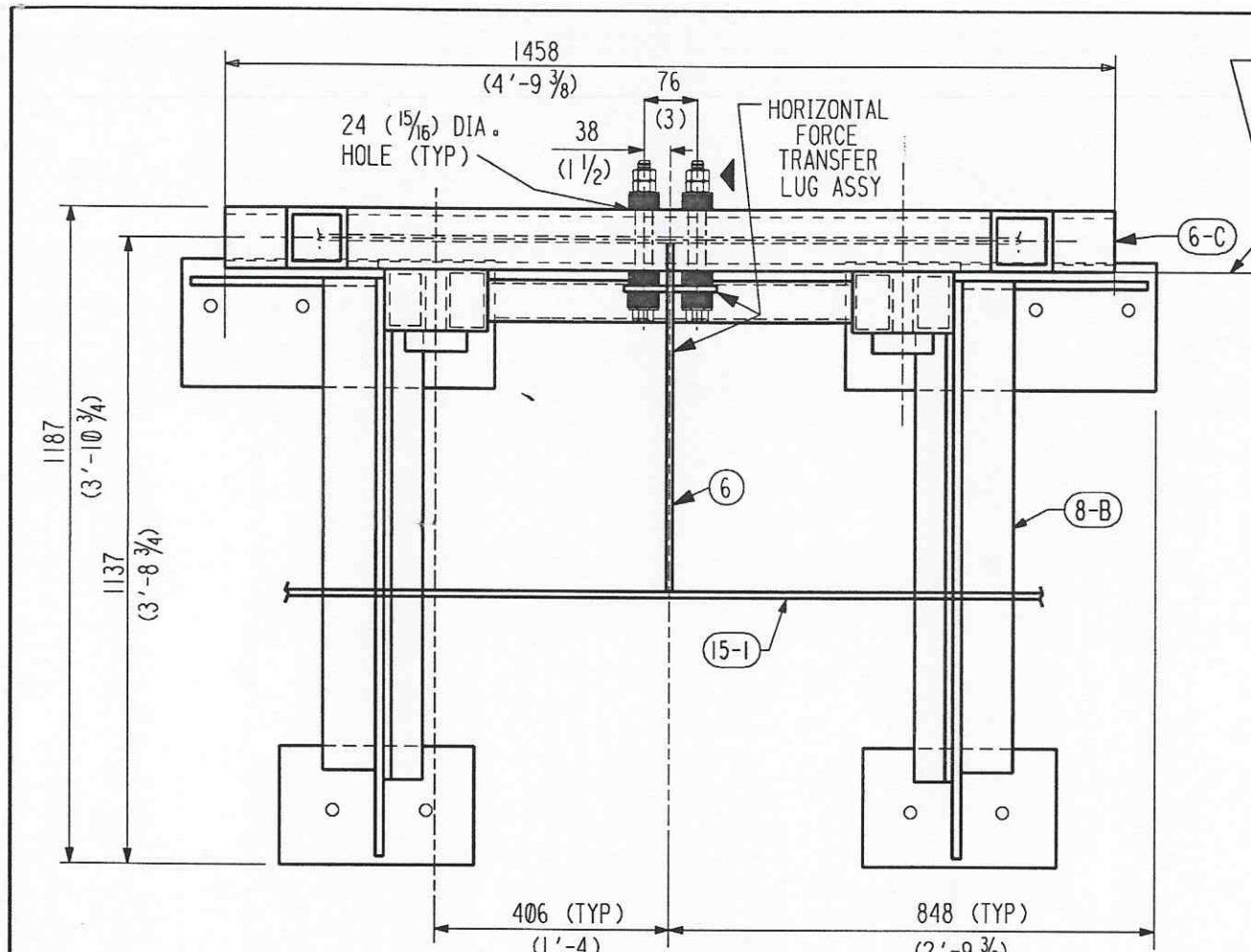
- NOTES:
1. WORK THIS DRAWING WITH DWG. #6 AND #8.
 2. DETAILED AND BILLED FOR ONE (1) FIXED SUPPORT. TOTAL OF (16) FIXED SUPPORTS (NEAR TERMINATION) AND (376) FIXED SUPPORTS (AWAY FROM TERMINATION) REQUIRED.

BY	CHKD	DATE	REV	DESCRIPTION
			1	REVISED ENTIRE DRAWING
			2	REV ENTIRE DWG TO REFLECT NEW SUPPORT DESIGN
			3	REVISED BILLING AND ADDED DOUBLE NUTS TO PC. 5

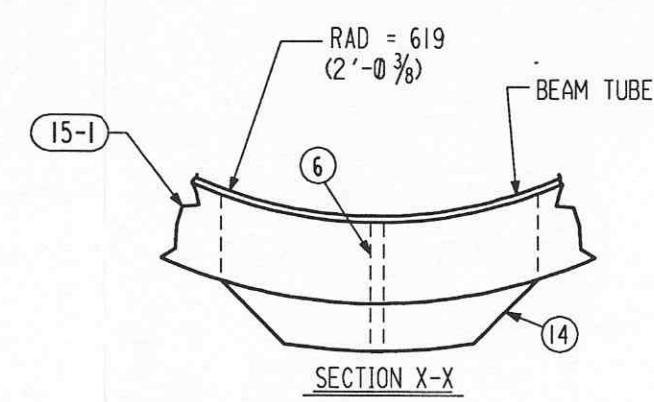
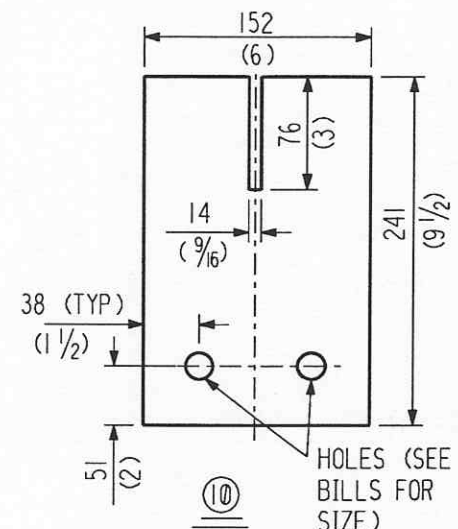
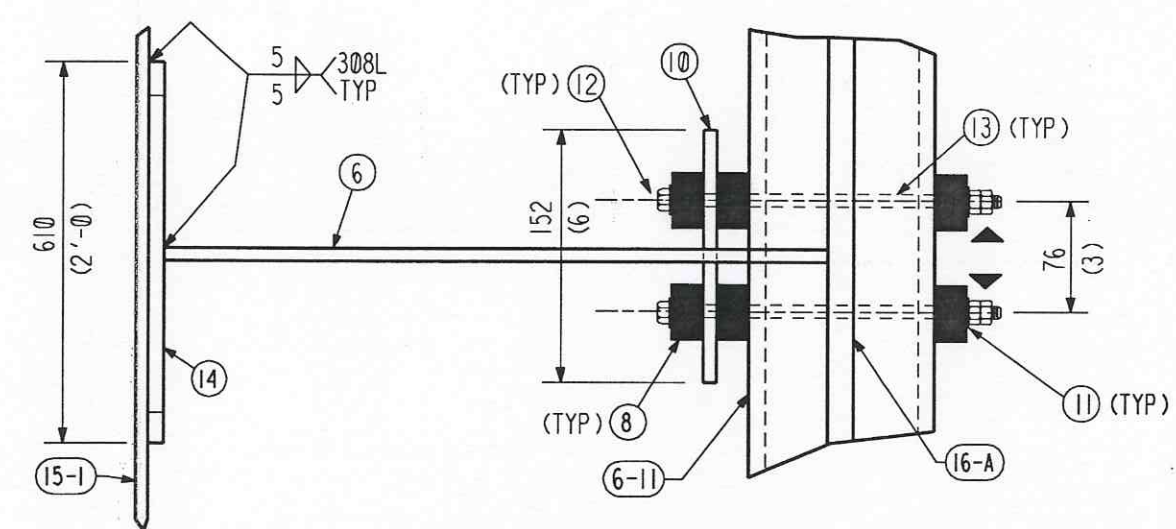
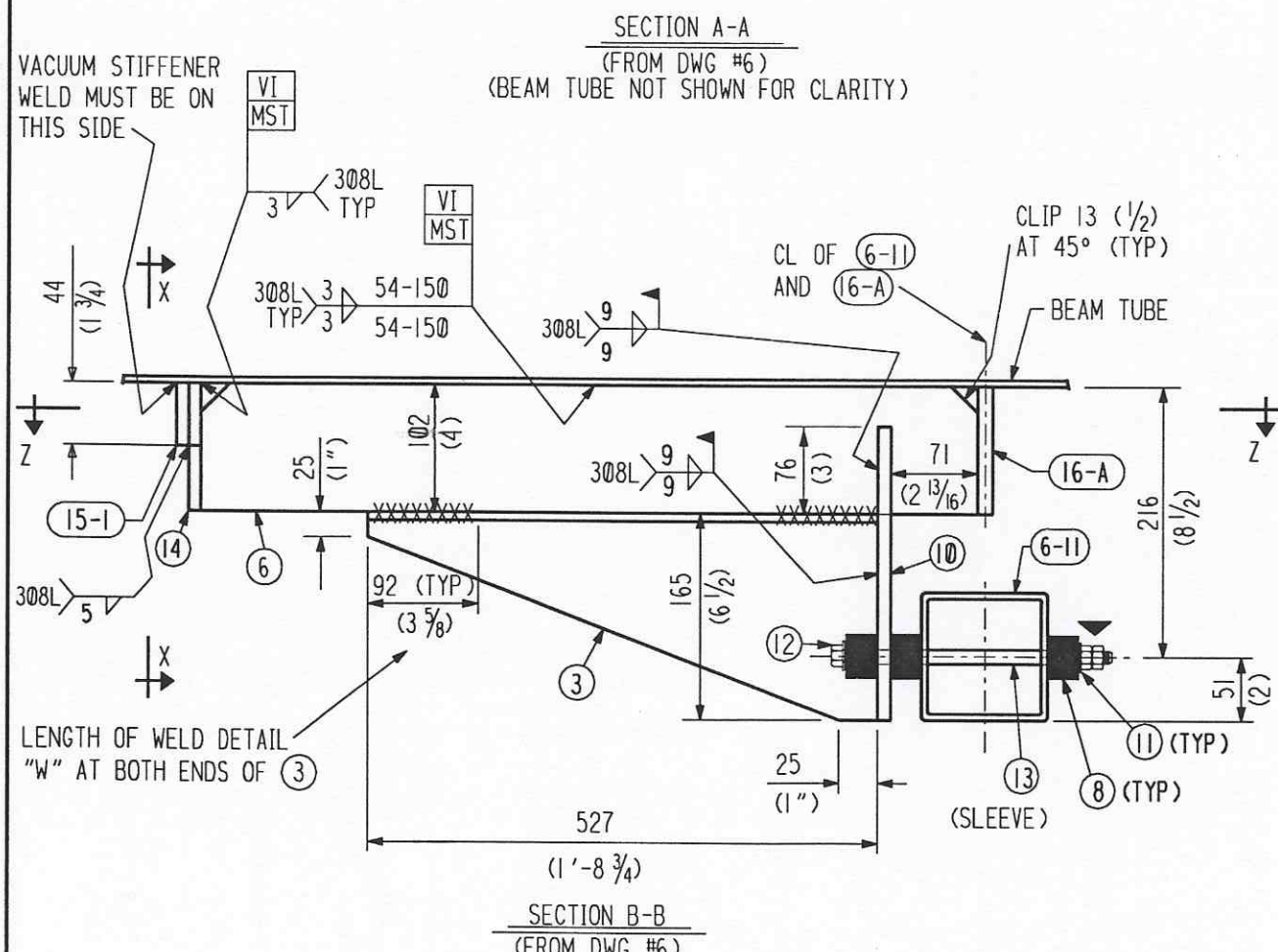
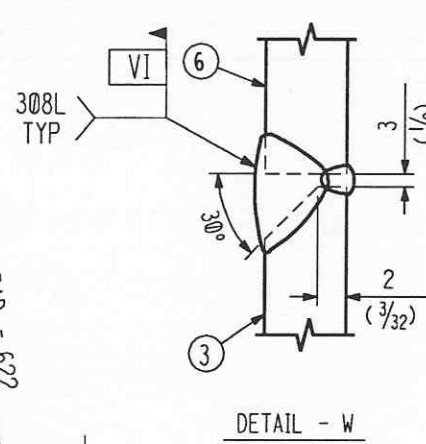
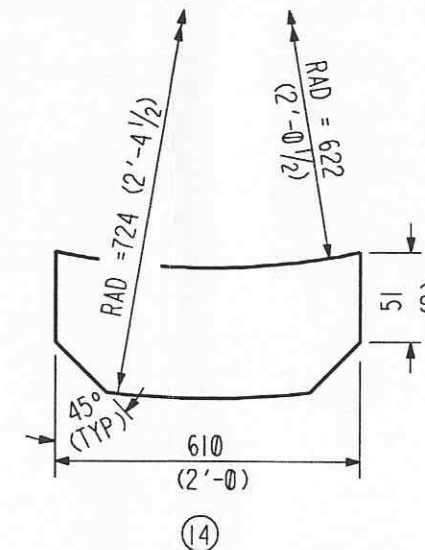
CBI		SUPPLIER'S / PURCHASER'S NO	
LIGO BEAM TUBE HANFORD, WA AND LIVINGSTON, LA			
BEAM TUBE FIXED SUPPORT PLAN VIEW & DETAILS (AWAY FROM TERM.)			
CUSTOMER'S NO		CONTRACT NO	
BY WAW CHKD DET DATE 3-7-94		953571	
M.L. TELLALIAN		DWG 7	REV 7D
ENGINEERING ASSIGNED		SHT 1	
D950036-07-B			

55710107.DGN

INDICATES CHANGE FROM PREVIOUS ISSUE



THIS FACE OF ALL PC. (8-13) WILL BE IN SAME PLANE WITHIN 3 (1/8)



SHIP PC	MARK	ASSM PC	DESCRIPTION	LENGTH MM	SPEC	ID
			FIXED SUPPORT (NEAR TERMINATION)			
1	7-3		PL SK X 13 (1/2)		***	C
1	7-6		PL 102 X 13 (4 X 1/2 X 2'-5 9/16)	751	***	C
6	7-8		MICARTA BLOCK 44 X 44 X 25 (1 3/4 X 1 3/4 X 1) W/ 22 (7/8) DIA HOLE		GRADE G11	C
1	7-10		PL SK X 19 (3/4) W/ 24 (15/16) DIA HOLES		***	C
4	7-11		WASHER 19 (3/4) DIA		F436	Ac
2	7-12		BOLT 19 (3/4) DIA HVY HEX W/ 2 NUTS	254 (10)	*	Ac
2	7-13		INSULATING SLEEVE 19 (3/4) ID X 1/32 THK (FROM F.H. MALONEY CO.)	178 (7)	MYLAR	C
1	7-14		PL SK X 10 (3/8)		***	C
			* = A325 TYPE 3 (NOT GALV.)			
			*** = SA240 TP304L			
			*** = SA240 TP304L			

APPROVED
M. Tellalian 6-28-96
 CBI DATE
 CALTECH DATE

REVISIONS		REMARKS	
BY	DATE	BY	DATE
CHKD	5-18-96	CHKD	5-18-96
DIR	5-18-96	DIR	5-18-96
ADD'D ENTIRE SHT.		REVISED BILLING AND ADDED DOUBLE NUTS TO PC, 12.	

CBI		SUPPLIER'S / PURCHASER'S NO	
LIGO BEAM TUBE HANFORD, WA AND LIVINGSTON, LA BEAM TUBE FIXED SUPPORT PLAN VIEW & DETAILS (NEAR TERMINATION)			
CUSTOMER'S NO		CONTRACT NO	
BY WAW CHKD DET DATE 3-7-94		953571	
M.J. TELLALIAN ENGINEERING ASSIGNED		DWG 7	REV 7D
		SHT 2	

55710207.DGN

INDICATES CHANGE FROM PREVIOUS ISSUE