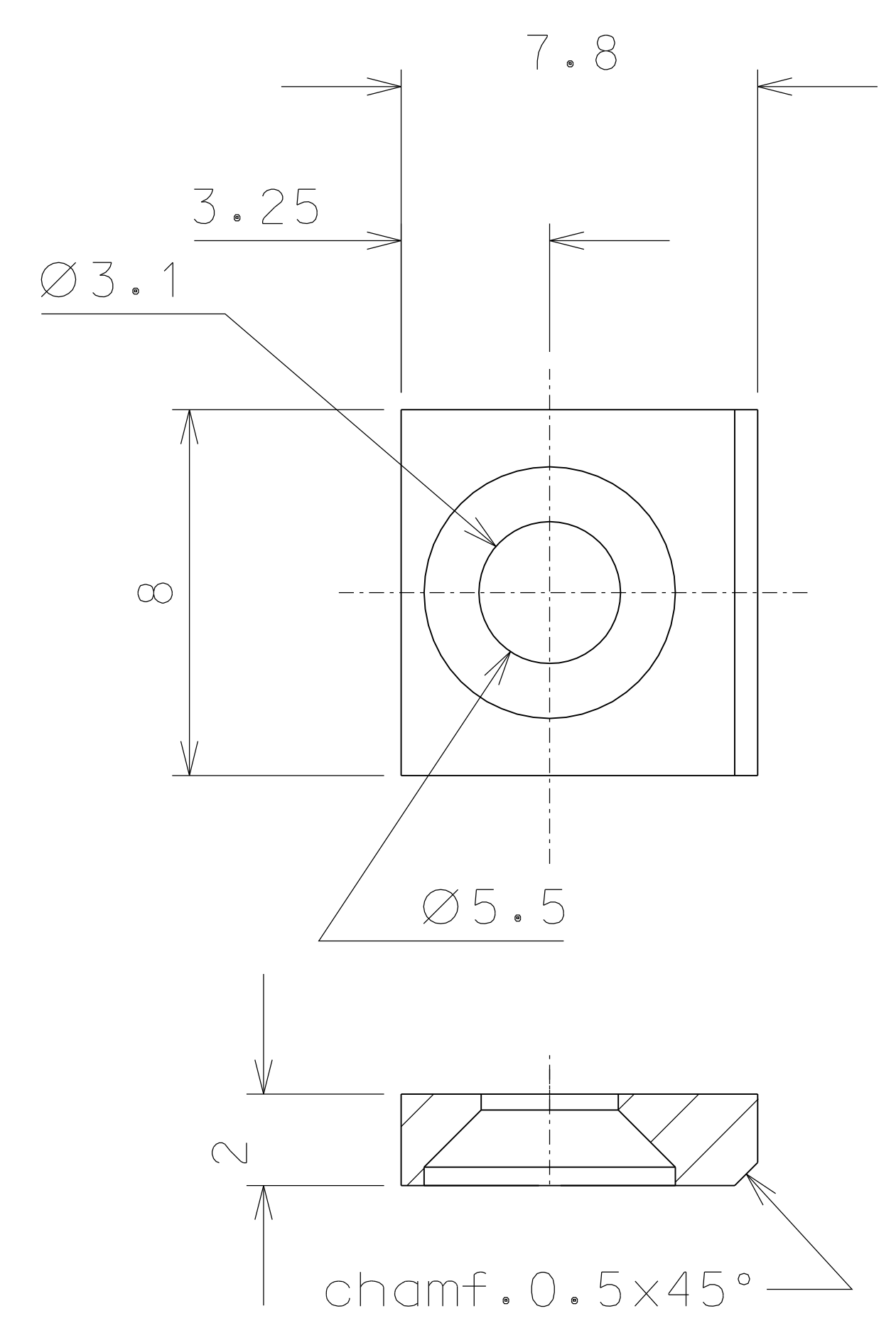
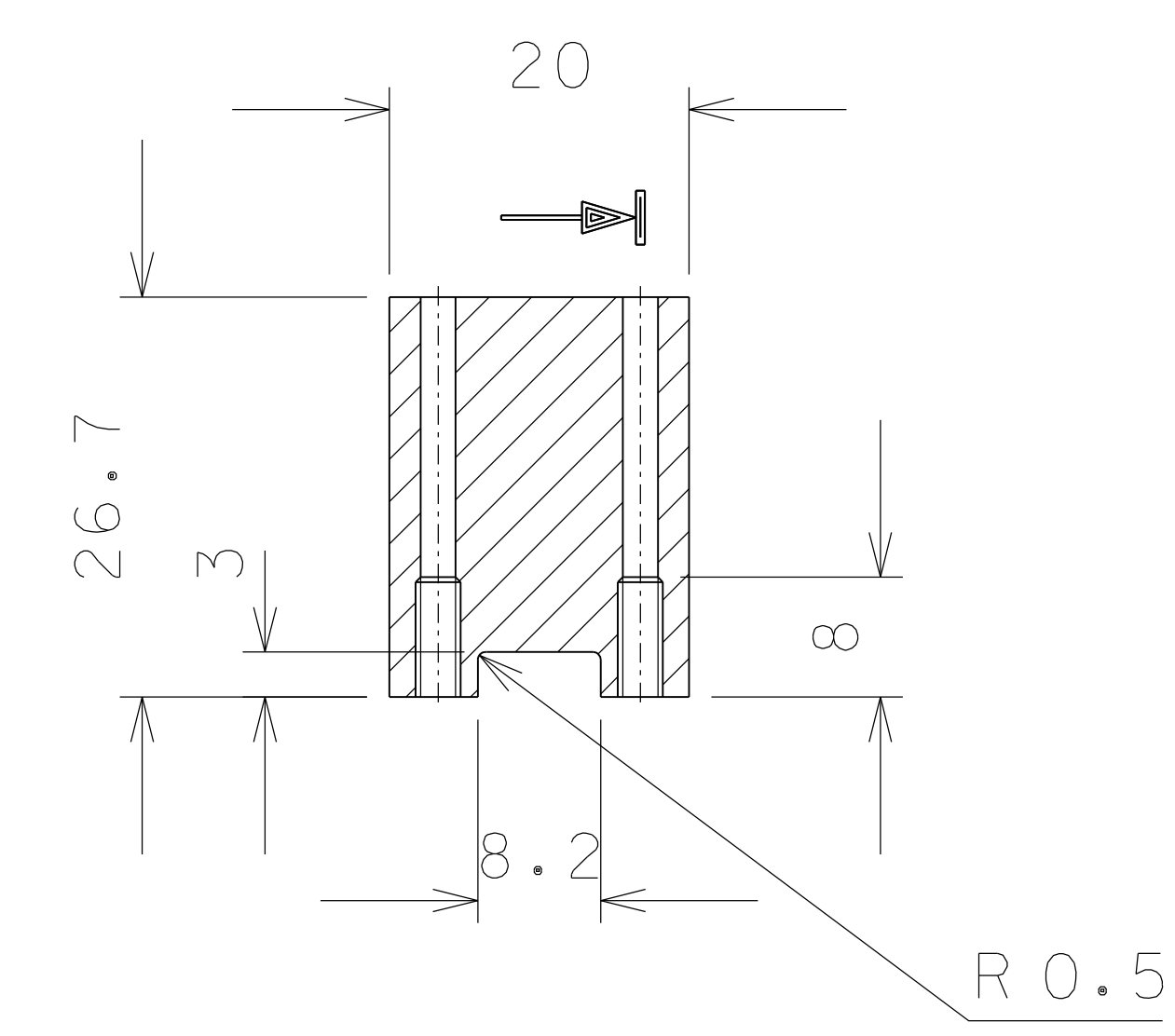
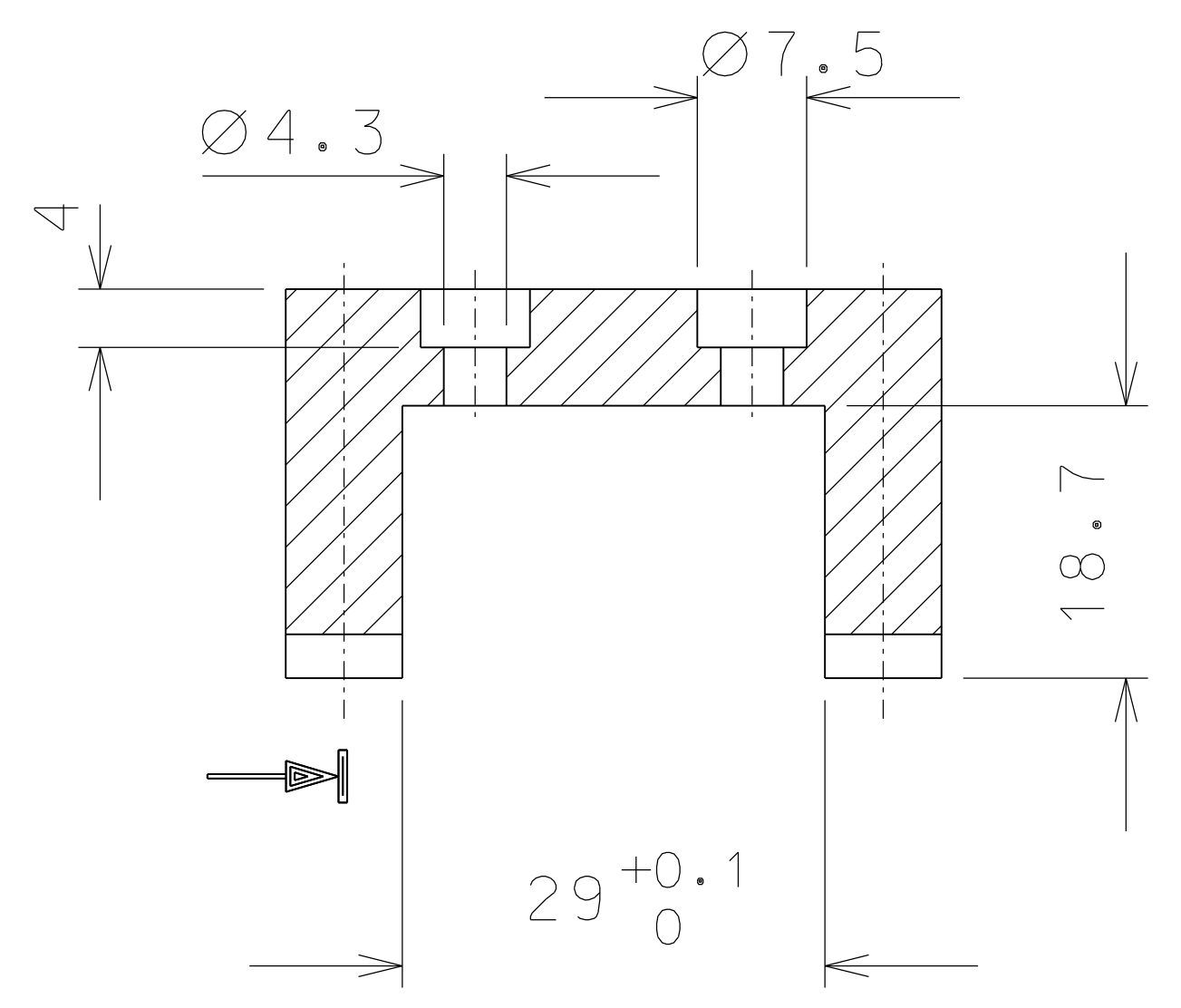
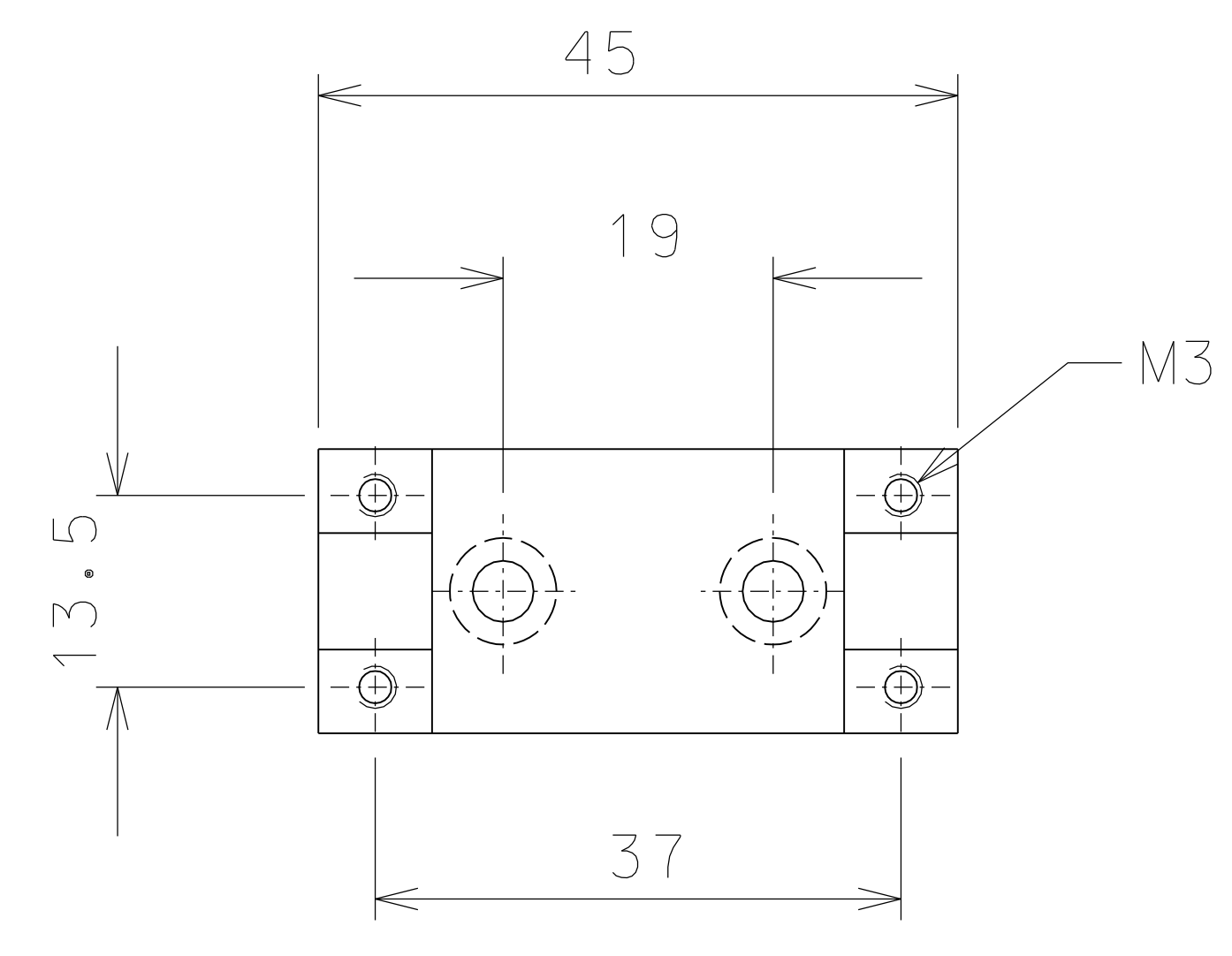
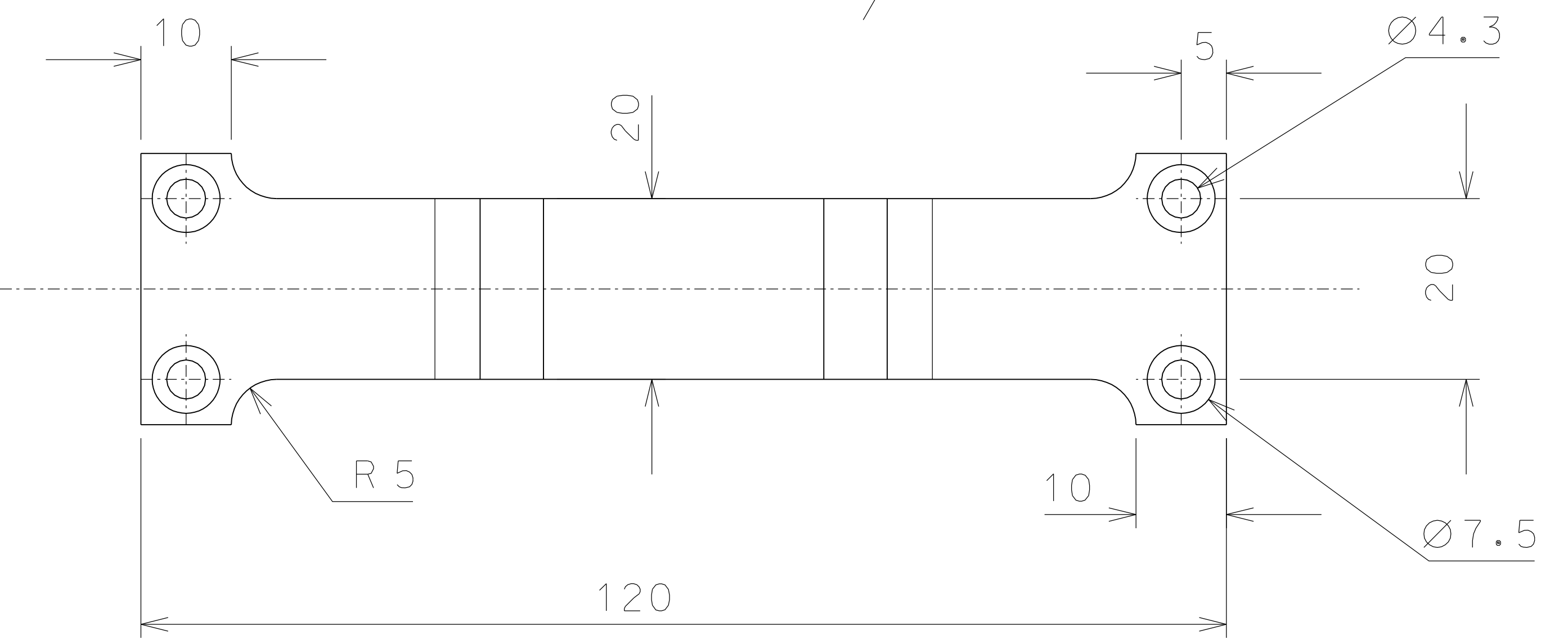
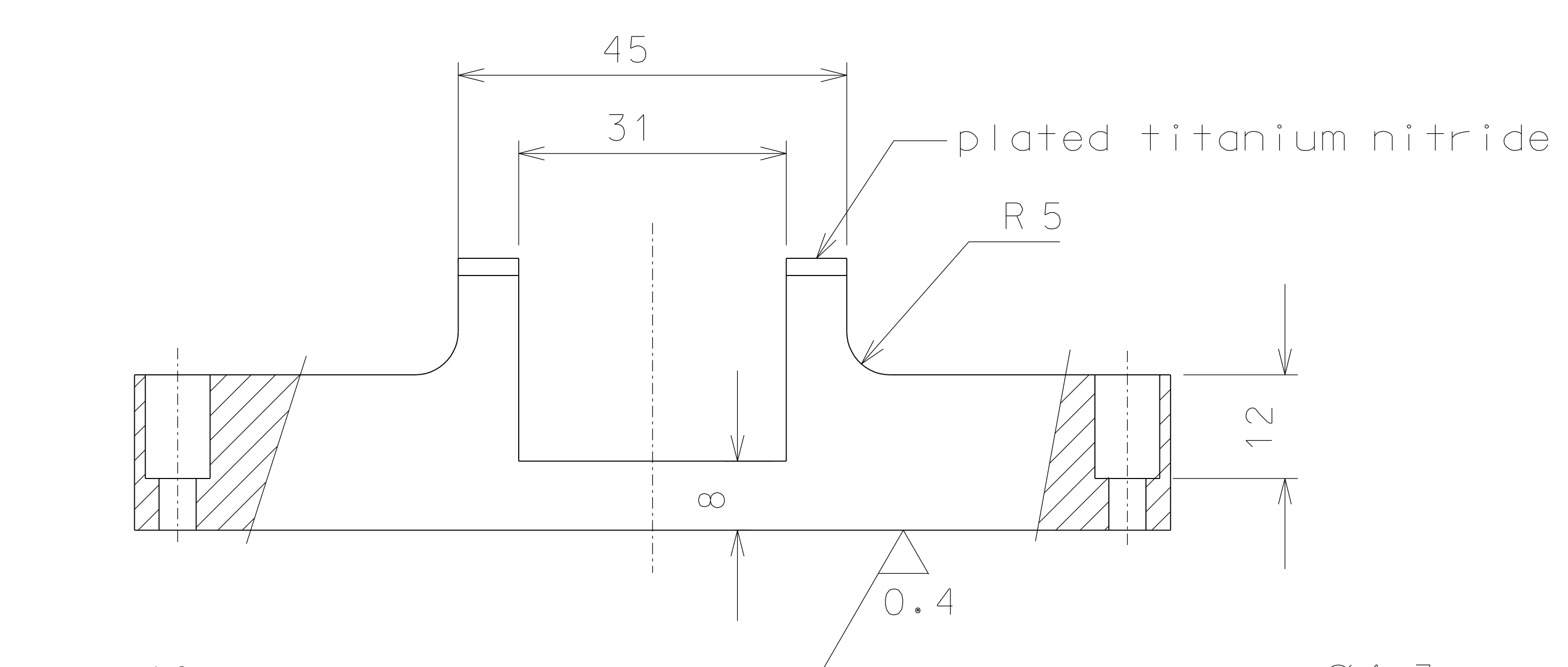


7

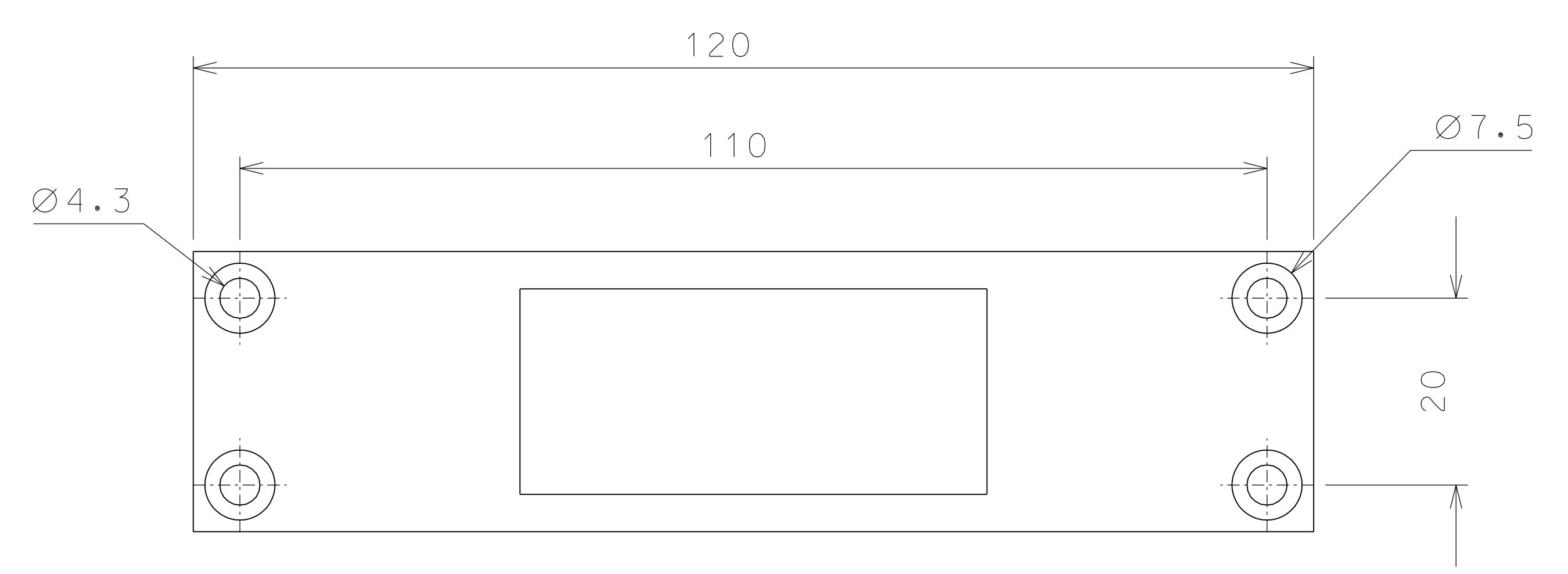
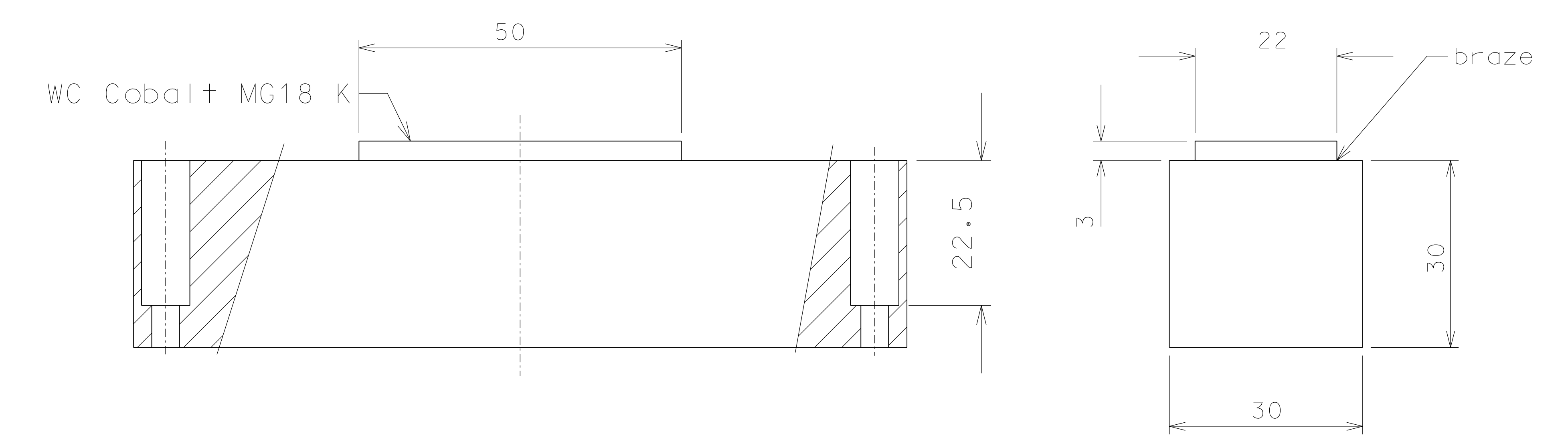


18

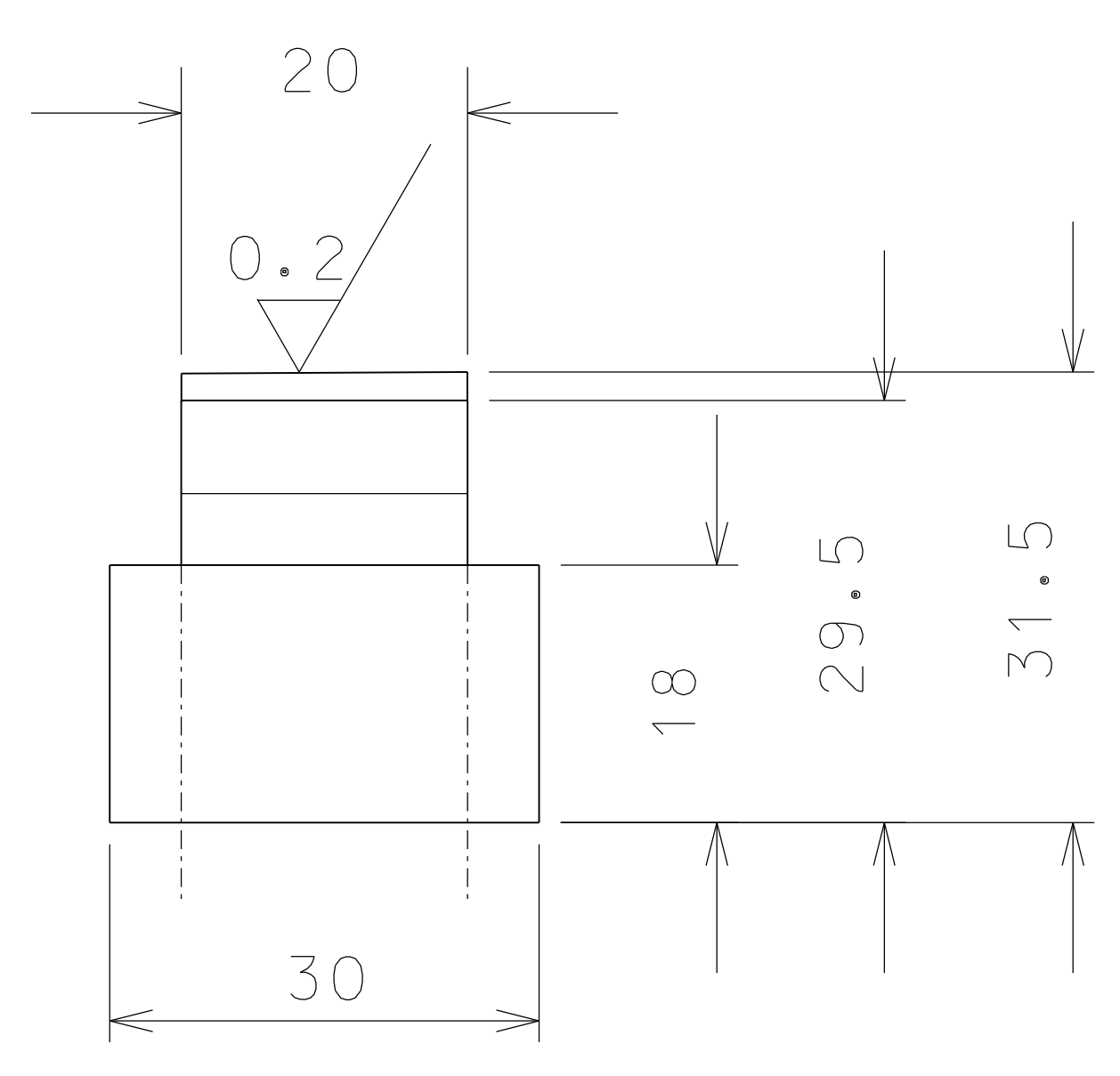


21

Partial assembly (before final machining)



21



subassembly of part 21 and 22

ref.	pieces	mat. and treatments	scale	ref.	pieces	mat. and treatments	scale
21	1	bronze B14	1/1				
18	4	AISI 316	4/1				
7	1	AISI 316	1/1				

General machining tolerances UNI 5307-63								
Dimensions	< 6	> 6-30	> 30-120	> 120-315	> 315-1000	> 1000-2000	> 2000-4000	> 4000
Linear Toll.	± 0.1	± 0.2	± 0.3	± 0.5	± 0.8	± 1.2	± 2	± 3
angular Toll.	± 1'	± 30'	± 20'	± 10' referred to the shortest side				

	designed for		R.De Salvo	
	LIGO PROJECT		draw. by G. Gennaro-PRMEC	
	date 8-04-08		scale 1/1	
	title TILTMETER DETAILS		LIGO-D081007-01-D	
ref. 1001		detail from A 2		